

USH 41: CTH AAA TO CTH G (BROWN COUNTY) NIGHTTIME CLOSURE NO DIVERSION ROUTE (MAX QUEUE METHOD)	OCTOBER
	Analyzed for 2009 Construction Season

SUMMARY OF TRAFFIC MODEL OUTPUT

MON-THUR SOUTHBOUND DIRECTION

TIME OF DAY	FLOWS AND CAPACITY IN VEH/HR						AVERAGE SPEEDS IN MPH			
	MAIN ROUTE		SITE CAPA CITY	FLOW		AV.DEL PER VEH (MINS)	AVERAGE QUEUE (VEH)	MAIN ROUTE		SITE
	DEMAND FLOW	PCT HEAVY		MAIN ROUTE	'DIVER TED'			WITHOUT WORK ZONE	WITH WORK ZONE	
MID-1 AM	330	0.0	1500	330	0	0.45	0	65.8	47.5	44.2
1-2 AM	168	0.0	1500	168	0	0.44	0	66.1	48.1	44.8
2-3 AM	147	0.0	1500	147	0	0.44	0	66.1	48.3	44.9
3-4 AM	185	0.0	1500	185	0	0.44	0	66.0	48.1	44.8
4-5 AM	454	0.0	1500	454	0	0.47	0	65.5	47.1	43.7
5-6 AM	1360	0.0	OFF	1360	0	0.00	0	63.8	63.8	63.8
6-7 AM	2624	0.0	OFF	2624	0	0.00	0	59.6	59.6	59.6
7-8 AM	3381	0.0	OFF	3381	0	0.00	0	51.9	51.9	51.9
8-9 AM	2085	0.0	OFF	2085	0	0.00	0	62.5	62.5	62.5
9-10 AM	1745	0.0	OFF	1745	0	0.00	0	63.2	63.2	63.2
10-11 AM	1740	0.0	OFF	1740	0	0.00	0	63.2	63.2	63.2
11AM-NOON	1876	0.0	OFF	1876	0	0.00	0	62.9	62.9	62.9
NOON-1PM	2030	0.0	OFF	2030	0	0.00	0	62.6	62.6	62.6
1-2 PM	2116	0.0	OFF	2116	0	0.00	0	62.5	62.5	62.5
2-3 PM	2300	0.0	OFF	2300	0	0.00	0	62.1	62.1	62.1
3-4 PM	2736	0.0	OFF	2736	0	0.00	0	58.5	58.5	58.5
4-5 PM	3292	0.0	OFF	3292	0	0.00	0	52.8	52.8	52.8
5-6 PM	2968	0.0	OFF	2968	0	0.00	0	56.1	56.1	56.1
6-7 PM	1696	0.0	OFF	1696	0	0.00	0	63.2	63.2	63.2
7-8 PM	1195	0.0	1500	1195	0	0.63	0	64.1	42.2	38.6
8-9 PM	1020	0.0	1500	1020	0	0.52	0	64.5	45.0	41.6
9-10 PM	947	0.0	1500	947	0	0.51	0	64.6	45.3	41.9
10-11 PM	585	0.0	1500	585	0	0.48	0	65.3	46.6	43.2
11PM-MID	376	0.0	1500	376	0	0.46	0	65.7	47.4	44.0

"OFF" INDICATES NO ROAD WORK (ALL LANES OPEN TO TRAFFIC)

----- SITE BREAKDOWN DELAYS -----	
BREAKDOWN DURATION (MINS)	0
RANGE OF QUEUE DELAY - MIN (VEH-H) MAX	0.0
AV BREAKDOWNS PER DAY	0.00
AV QUEUE DELAY/DAY (VEH-H)	0.0
AV TOTAL DELAY/DAY (VEH-H)	0.0

----- SITE ACCIDENT DELAYS -----	
BREAKDOWN DURATION (MINS)	0
RANGE OF QUEUE DELAY - MIN (VEH-H) MAX	0
AV BREAKDOWNS PER DAY	0
AV QUEUE DELAY/DAY (VEH-H)	0
AV TOTAL DELAY/DAY (VEH-H)	0

AVERAGE ACCIDENT NUMBERS (PIA/DAY)	
MAIN ROUTE WITHOUT WORKS	0.0077
MAIN ROUTE WITH WORKS	0.0074
'DIVERSION'	0.0000
PIA: Personal Injury Accidents	
IMPACTS ON ROAD USERS	
ROAD USER COSTS PER DAY	\$582
CONGESTED HOURS PER DAY*	0

*Delays Exceeding User-Specified Maximum

**USH 41: CTH AAA TO CTH G (BROWN COUNTY)
NIGHTTIME CLOSURE
NO DIVERSION ROUTE (MAX QUEUE METHOD)**

OCTOBER

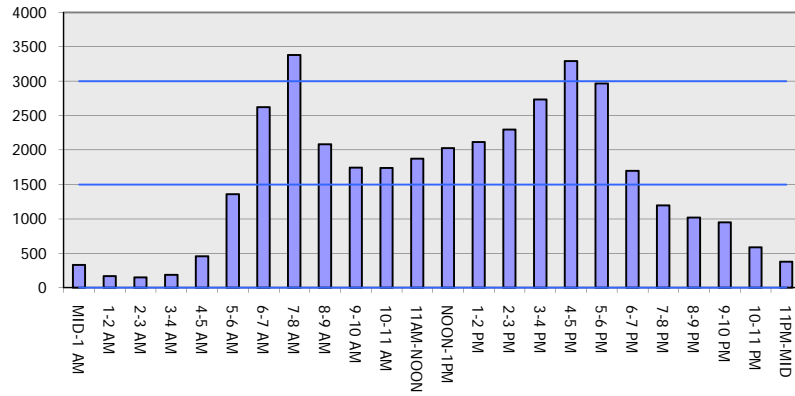
Analyzed for 2009
Construction Season

GRAPHICAL REPRESENTATION OF TRAFFIC MODEL INPUT AND OUTPUT

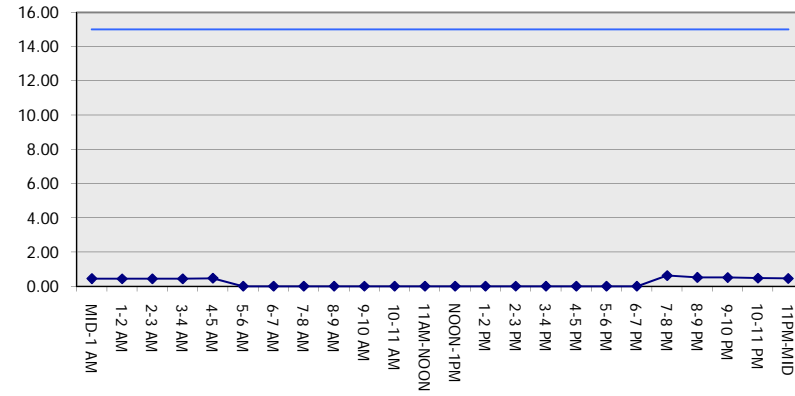
MON-THUR

SOUTHBOUND DIRECTION

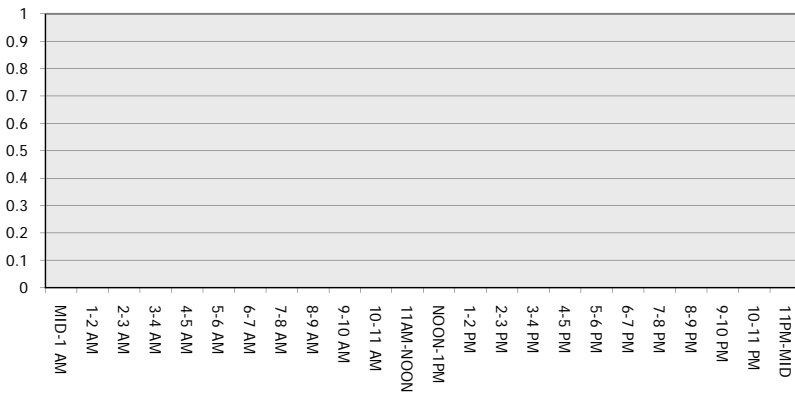
Main Route - Traffic Demand (Vehicles Per Hour)



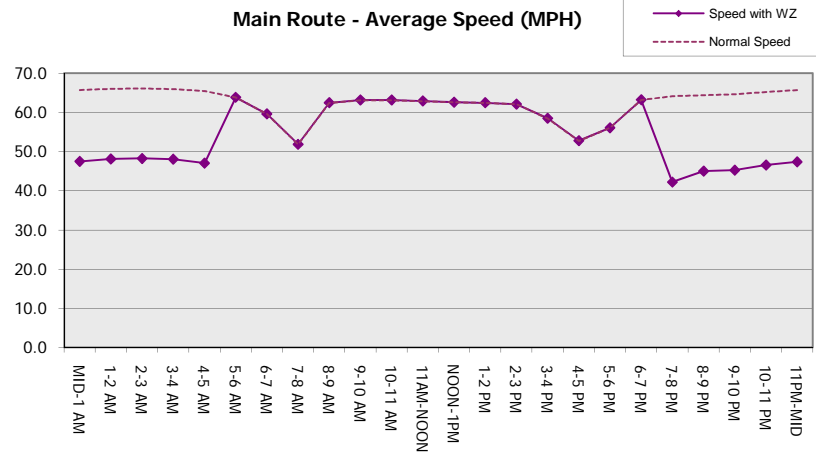
Main Route Average Delay Per Vehicle (Minutes)



Main Route - Average Queue Length (Vehicles)



Main Route - Average Speed (MPH)



USH 41: CTH AAA TO CTH G (BROWN COUNTY) NIGHTTIME CLOSURE NO DIVERSION ROUTE (MAX QUEUE METHOD)	OCTOBER
	Analyzed for 2009 Construction Season

SUMMARY OF TRAFFIC MODEL OUTPUT

MON-THUR NORTHBOUND DIRECTION

TIME OF DAY	FLOWS AND CAPACITY IN VEH/HR							AVERAGE SPEEDS IN MPH		
	MAIN ROUTE		SITE CAPA CITY	FLOW		AV.DEL PER VEH (MINS)	AVERAGE QUEUE (VEH)	MAIN ROUTE		SITE
	DEMAND FLOW	PCT HEAVY		MAIN ROUTE	'DIVER TED'			WITHOUT WORK ZONE	WITH WORK ZONE	
MID-1 AM	198	0.0	1500	198	0	0.44	0	66.0	48.0	44.7
1-2 AM	123	0.0	1500	123	0	0.43	0	66.1	48.3	45.0
2-3 AM	140	0.0	1500	140	0	0.44	0	66.1	48.3	44.9
3-4 AM	153	0.0	1500	153	0	0.44	0	66.1	48.2	44.9
4-5 AM	314	0.0	1500	314	0	0.45	0	65.8	47.6	44.2
5-6 AM	856	0.0	OFF	856	0	0.00	0	64.8	64.8	64.8
6-7 AM	2111	0.0	OFF	2111	0	0.00	0	62.5	62.5	62.5
7-8 AM	3480	0.0	OFF	3480	0	0.00	0	50.9	50.9	50.9
8-9 AM	2436	0.0	OFF	2436	0	0.00	0	61.5	61.5	61.5
9-10 AM	1853	0.0	OFF	1853	0	0.00	0	62.9	62.9	62.9
10-11 AM	1769	0.0	OFF	1769	0	0.00	0	63.1	63.1	63.1
11AM-NOON	1916	0.0	OFF	1916	0	0.00	0	62.8	62.8	62.8
NOON-1PM	1952	0.0	OFF	1952	0	0.00	0	62.7	62.7	62.7
1-2 PM	1936	0.0	OFF	1936	0	0.00	0	62.8	62.8	62.8
2-3 PM	2287	0.0	OFF	2287	0	0.00	0	62.1	62.1	62.1
3-4 PM	2843	0.0	OFF	2843	0	0.00	0	57.4	57.4	57.4
4-5 PM	3538	0.0	OFF	3538	0	0.00	0	50.2	50.2	50.2
5-6 PM	3167	0.0	OFF	3167	0	0.00	0	54.1	54.1	54.1
6-7 PM	1878	0.0	OFF	1878	0	0.00	0	62.9	62.9	62.9
7-8 PM	1185	0.0	1500	1185	0	0.62	0	64.1	42.5	38.9
8-9 PM	894	0.0	1500	894	0	0.51	0	64.7	45.5	42.0
9-10 PM	766	0.0	1500	766	0	0.50	0	65.0	46.0	42.5
10-11 PM	548	0.0	1500	548	0	0.48	0	65.4	46.7	43.3
11PM-MID	343	0.0	1500	343	0	0.46	0	65.8	47.5	44.1

"OFF" INDICATES NO ROAD WORK (ALL LANES OPEN TO TRAFFIC)

----- SITE BREAKDOWN DELAYS -----	
BREAKDOWN DURATION (MINS)	0
RANGE OF QUEUE DELAY - MIN (VEH-H) MAX	0.0
AV BREAKDOWNS PER DAY	0.00
AV QUEUE DELAY/DAY (VEH-H)	0.0
AV TOTAL DELAY/DAY (VEH-H)	0.0

----- SITE ACCIDENT DELAYS -----	
BREAKDOWN DURATION (MINS)	0
RANGE OF QUEUE DELAY - MIN (VEH-H) MAX	0
AV BREAKDOWNS PER DAY	0
AV QUEUE DELAY/DAY (VEH-H)	0
AV TOTAL DELAY/DAY (VEH-H)	0

AVERAGE ACCIDENT NUMBERS (PIA/DAY)	
MAIN ROUTE WITHOUT WORKS	0.0076
MAIN ROUTE WITH WORKS	0.0073
'DIVERSION'	0.0000

PIA: Personal Injury Accidents

ECONOMIC IMPACT ON ROAD USERS	
ROAD USER COSTS PER DAY	\$499
CONGESTED HOURS PER DAY*	0

*Delays Exceeding User-Specified Maximum

**USH 41: CTH AAA TO CTH G (BROWN COUNTY)
NIGHTTIME CLOSURE
NO DIVERSION ROUTE (MAX QUEUE METHOD)**

OCTOBER

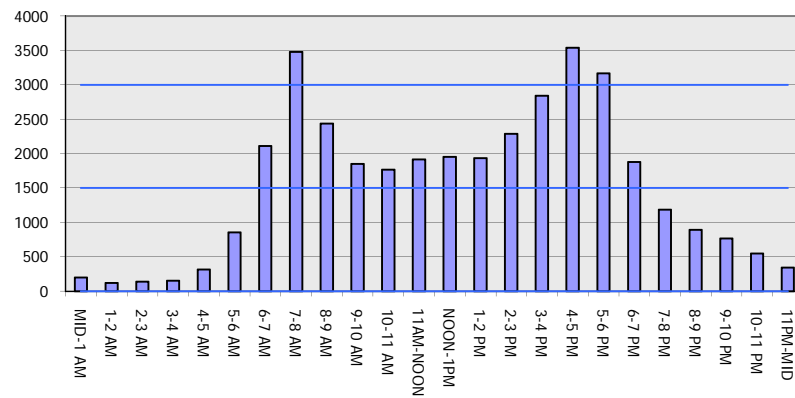
Analyzed for 2009
Construction Season

GRAPHICAL REPRESENTATION OF TRAFFIC MODEL INPUT AND OUTPUT

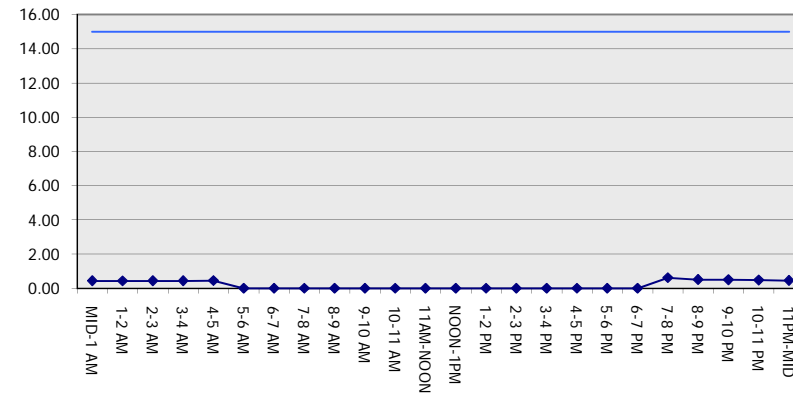
MON-THUR

NORTHBOUND DIRECTION

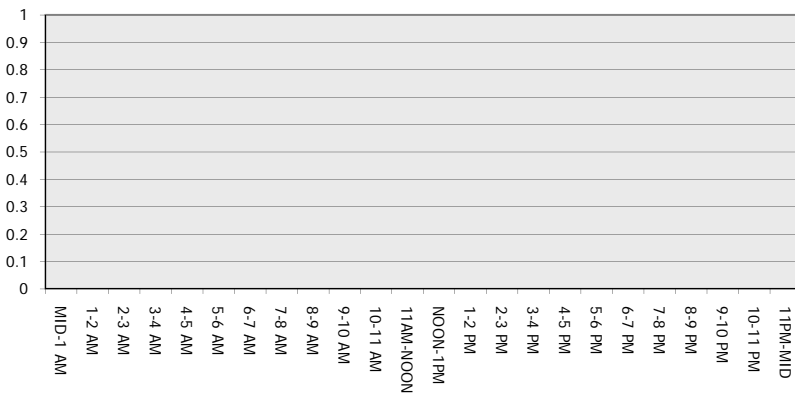
Main Route - Traffic Demand (Vehicles Per Hour)



Main Route Average Delay Per Vehicle (Minutes)



Main Route - Average Queue Length (Vehicles)



Main Route - Average Speed (MPH)

