

<b>USH 41: CTH AAA TO CTH G (BROWN COUNTY)                  NIGHTTIME CLOSURE                  NO DIVERSION ROUTE (MAX QUEUE METHOD)</b>	<b>AUGUST</b>
	Analyzed for 2009 Construction Season

**SUMMARY OF TRAFFIC MODEL OUTPUT**

SUNDAY SOUTHBOUND DIRECTION

TIME OF DAY	FLOWS AND CAPACITY IN VEH/HR						AVERAGE SPEEDS IN MPH			
	MAIN ROUTE		SITE CAPA CITY	FLOW		AV.DEL PER VEH (MINS)	AVERAGE QUEUE (VEH)	MAIN ROUTE		SITE
	DEMAND FLOW	PCT HEAVY		MAIN ROUTE	'DIVER TED'			WITHOUT WORK ZONE	WITH WORK ZONE	
MID-1 AM	605	0.0	1500	605	0	0.48	0	65.3	46.5	43.1
1-2 AM	318	0.0	1500	318	0	0.45	0	65.8	47.6	44.2
2-3 AM	267	0.0	1500	267	0	0.45	0	65.9	47.8	44.4
3-4 AM	187	0.0	1500	187	0	0.44	0	66.0	48.1	44.7
4-5 AM	161	0.0	1500	161	0	0.44	0	66.1	48.2	44.8
5-6 AM	205	0.0	1500	205	0	0.44	0	66.0	48.0	44.6
6-7 AM	337	0.0	1500	337	0	0.46	0	65.8	47.5	44.2
7-8 AM	473	0.0	1500	473	0	0.47	0	65.5	47.0	43.6
8-9 AM	800	0.0	1500	800	0	0.50	0	64.9	45.8	42.4
9-10 AM	1242	0.0	OFF	1242	0	0.00	0	64.1	64.1	64.1
10-11 AM	1837	0.0	OFF	1837	0	0.00	0	63.0	63.0	63.0
11AM-NOON	2103	0.0	OFF	2103	0	0.00	0	62.5	62.5	62.5
NOON-1PM	2292	0.0	OFF	2292	0	0.00	0	62.1	62.1	62.1
1-2 PM	2338	0.0	OFF	2338	0	0.00	0	62.0	62.0	62.0
2-3 PM	2320	0.0	OFF	2320	0	0.00	0	62.0	62.0	62.0
3-4 PM	2317	0.0	OFF	2317	0	0.00	0	62.0	62.0	62.0
4-5 PM	2231	0.0	OFF	2231	0	0.00	0	62.2	62.2	62.2
5-6 PM	1930	0.0	OFF	1930	0	0.00	0	62.8	62.8	62.8
6-7 PM	1718	0.0	OFF	1718	0	0.00	0	63.2	63.2	63.2
7-8 PM	1333	0.0	1500	1333	0	0.81	0	63.9	38.4	34.6
8-9 PM	1134	0.0	1500	1134	0	0.55	0	64.3	44.2	40.7
9-10 PM	797	0.0	1500	797	0	0.50	0	64.9	45.8	42.4
10-11 PM	576	0.0	1500	576	0	0.48	0	65.3	46.6	43.2
11PM-MID	363	0.0	1500	363	0	0.46	0	65.7	47.4	44.0

"OFF" INDICATES NO ROAD WORK (ALL LANES OPEN TO TRAFFIC)

*----- SITE BREAKDOWN DELAYS -----*	
BREAKDOWN DURATION (MINS)	0
RANGE OF QUEUE DELAY - MIN (VEH-H) MAX	0.0
AV BREAKDOWNS PER DAY	0.00
AV QUEUE DELAY/DAY (VEH-H)	0.0
AV TOTAL DELAY/DAY (VEH-H)	0.0

*----- SITE ACCIDENT DELAYS -----*	
BREAKDOWN DURATION (MINS)	0
RANGE OF QUEUE DELAY - MIN (VEH-H) MAX	0
AV BREAKDOWNS PER DAY	0
AV QUEUE DELAY/DAY (VEH-H)	0
AV TOTAL DELAY/DAY (VEH-H)	0

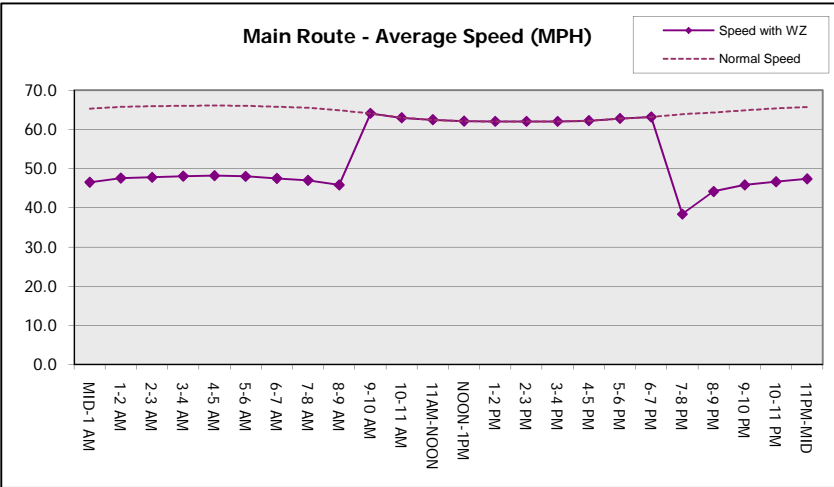
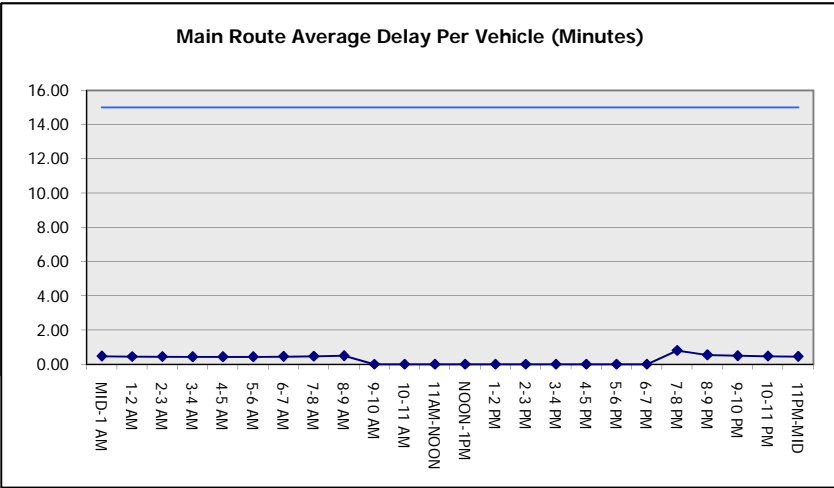
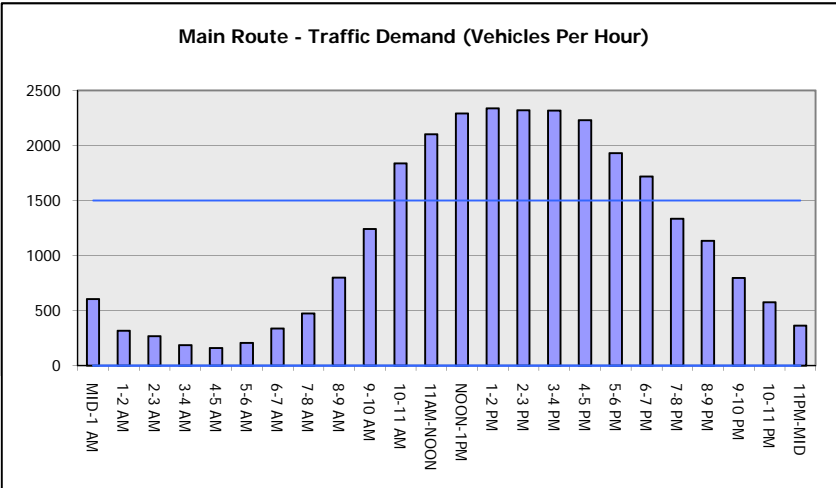
AVERAGE ACCIDENT NUMBERS (PIA/DAY)	
MAIN ROUTE WITHOUT WORKS	0.0058
MAIN ROUTE WITH WORKS	0.0053
'DIVERSION'	0.0000
PIA: Personal Injury Accidents	
IMPACTS ON ROAD USERS	
ROAD USER COSTS PER DAY	\$981
CONGESTED HOURS PER DAY*	0

\*Delays Exceeding User-Specified Maximum

**USH 41: CTH AAA TO CTH G (BROWN COUNTY)  
NIGHTTIME CLOSURE  
NO DIVERSION ROUTE (MAX QUEUE METHOD)**

**AUGUST**  
Analyzed for 2009  
Construction Season

**GRAPHICAL REPRESENTATION OF TRAFFIC MODEL INPUT AND OUTPUT**  
**SUNDAY SOUTHBOUND DIRECTION**



<b>USH 41: CTH AAA TO CTH G (BROWN COUNTY)                  NIGHTTIME CLOSURE                  NO DIVERSION ROUTE (MAX QUEUE METHOD)</b>	<b>AUGUST</b>
	Analyzed for 2009 Construction Season

**SUMMARY OF TRAFFIC MODEL OUTPUT**

SUNDAY      NORTHBOUND DIRECTION

TIME OF DAY	FLOWS AND CAPACITY IN VEH/HR						AVERAGE SPEEDS IN MPH			
	MAIN ROUTE		SITE CAPA CITY	FLOW		AV.DEL PER VEH (MINS)	AVERAGE QUEUE (VEH)	MAIN ROUTE		SITE
	DEMAND FLOW	PCT HEAVY		MAIN ROUTE	'DIVER TED'			WITHOUT WORK ZONE	WITH WORK ZONE	
MID-1 AM	374	0.0	1500	374	0	0.46	0	65.7	47.4	44.0
1-2 AM	207	0.0	1500	207	0	0.44	0	66.0	48.0	44.6
2-3 AM	203	0.0	1500	203	0	0.44	0	66.0	48.0	44.6
3-4 AM	157	0.0	1500	157	0	0.44	0	66.1	48.2	44.8
4-5 AM	111	0.0	1500	111	0	0.43	0	66.2	48.4	45.0
5-6 AM	211	0.0	1500	211	0	0.44	0	66.0	48.0	44.6
6-7 AM	313	0.0	1500	313	0	0.45	0	65.8	47.6	44.2
7-8 AM	458	0.0	1500	458	0	0.47	0	65.5	47.1	43.7
8-9 AM	674	0.0	1500	674	0	0.49	0	65.1	46.3	42.8
9-10 AM	1040	0.0	OFF	1040	0	0.00	0	64.5	64.5	64.5
10-11 AM	1423	0.0	OFF	1423	0	0.00	0	63.7	63.7	63.7
11AM-NOON	1689	0.0	OFF	1689	0	0.00	0	63.2	63.2	63.2
NOON-1PM	1796	0.0	OFF	1796	0	0.00	0	63.0	63.0	63.0
1-2 PM	1792	0.0	OFF	1792	0	0.00	0	63.0	63.0	63.0
2-3 PM	1750	0.0	OFF	1750	0	0.00	0	63.1	63.1	63.1
3-4 PM	1768	0.0	OFF	1768	0	0.00	0	63.1	63.1	63.1
4-5 PM	1729	0.0	OFF	1729	0	0.00	0	63.2	63.2	63.2
5-6 PM	1637	0.0	OFF	1637	0	0.00	0	63.3	63.3	63.3
6-7 PM	1398	0.0	OFF	1398	0	0.00	0	63.8	63.8	63.8
7-8 PM	1118	0.0	1500	1118	0	0.53	0	64.3	44.7	41.2
8-9 PM	919	0.0	1500	919	0	0.51	0	64.6	45.4	42.0
9-10 PM	655	0.0	1500	655	0	0.49	0	65.1	46.3	42.9
10-11 PM	484	0.0	1500	484	0	0.47	0	65.5	46.9	43.6
11PM-MID	286	0.0	1500	286	0	0.45	0	65.8	47.7	44.3

"OFF" INDICATES NO ROAD WORK (ALL LANES OPEN TO TRAFFIC)

*----- SITE BREAKDOWN DELAYS -----*	
BREAKDOWN DURATION (MINS)	0
RANGE OF QUEUE DELAY - MIN (VEH-H) MAX	0.0
AV BREAKDOWNS PER DAY	0.00
AV QUEUE DELAY/DAY (VEH-H)	0.0
AV TOTAL DELAY/DAY (VEH-H)	0.0

*----- SITE ACCIDENT DELAYS -----*	
BREAKDOWN DURATION (MINS)	0
RANGE OF QUEUE DELAY - MIN (VEH-H) MAX	0
AV BREAKDOWNS PER DAY	0
AV QUEUE DELAY/DAY (VEH-H)	0
AV TOTAL DELAY/DAY (VEH-H)	0

AVERAGE ACCIDENT NUMBERS (PIA/DAY)	
MAIN ROUTE WITHOUT WORKS	0.0046
MAIN ROUTE WITH WORKS	0.0042
'DIVERSION'	0.0000

PIA: Personal Injury Accidents

ECONOMIC IMPACT ON ROAD USERS	
ROAD USER COSTS PER DAY	\$711
CONGESTED HOURS PER DAY*	0

\*Delays Exceeding User-Specified Maximum

**USH 41: CTH AAA TO CTH G (BROWN COUNTY)  
NIGHTTIME CLOSURE  
NO DIVERSION ROUTE (MAX QUEUE METHOD)**

**AUGUST**

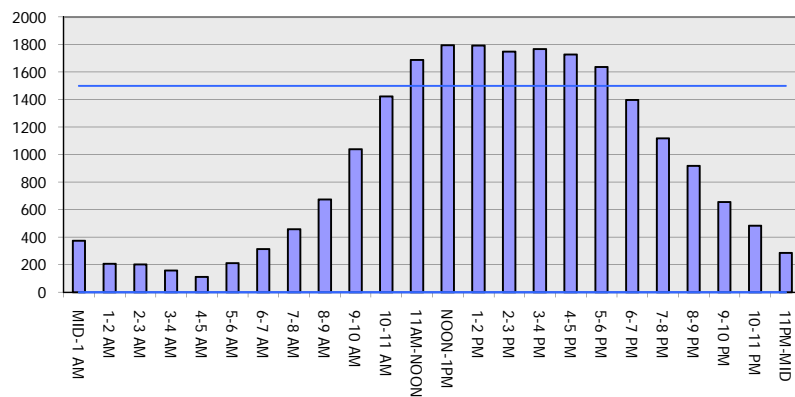
Analyzed for 2009  
Construction Season

**GRAPHICAL REPRESENTATION OF TRAFFIC MODEL INPUT AND OUTPUT**

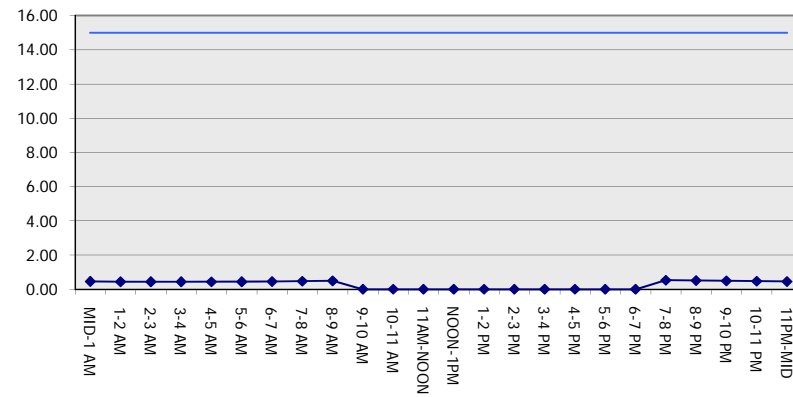
**SUNDAY**

**NORTHBOUND DIRECTION**

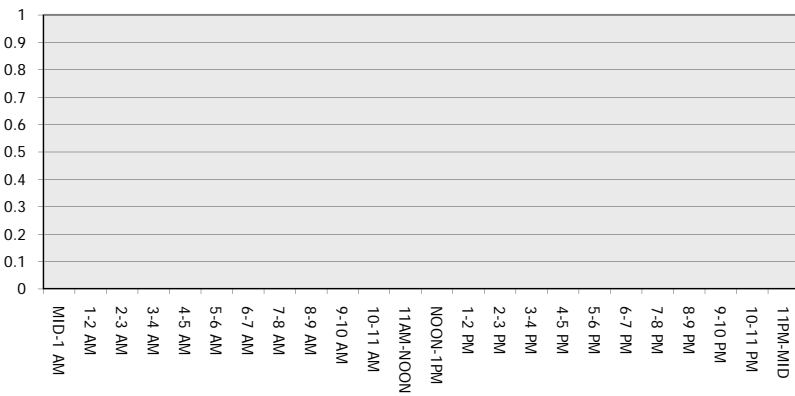
**Main Route - Traffic Demand (Vehicles Per Hour)**



**Main Route Average Delay Per Vehicle (Minutes)**



**Main Route - Average Queue Length (Vehicles)**



**Main Route - Average Speed (MPH)**

