

<b>USH 41: STH 29 TO CTH AAA (BROWN COUNTY)</b> <b>NIGHTTIME CLOSURE</b> <b>NO DIVERSION ROUTE (MAX QUEUE METHOD)</b>	<b>OCTOBER</b>
	Analyzed for 2009 Construction Season

**SUMMARY OF TRAFFIC MODEL OUTPUT**

SUNDAY SOUTHBOUND DIRECTION

TIME OF DAY	FLOWS AND CAPACITY IN VEH/HR						AVERAGE SPEEDS IN MPH				
	MAIN ROUTE		SITE CAPA CITY	FLOW		AV.DEL PER VEH (MINS)	AVERAGE QUEUE (VEH)	MAIN ROUTE		SITE	
	DEMAND FLOW	PCT HEAVY		MAIN ROUTE	'DIVER TED'			WITHOUT WORK ZONE	WITH WORK ZONE		
MID-1 AM	538	0.0	1500	538	0	0.47	0	65.4	59.0	43.3	
1-2 AM	341	0.0	1500	341	0	0.46	0	65.8	59.6	44.2	
2-3 AM	329	0.0	1500	329	0	0.45	0	65.8	59.6	44.2	
3-4 AM	212	0.0	1500	212	0	0.44	0	66.0	59.9	44.6	
4-5 AM	182	0.0	1500	182	0	0.44	0	66.1	60.0	44.8	
5-6 AM	232	0.0	1500	232	0	0.45	0	66.0	59.9	44.5	
6-7 AM	371	0.0	1500	371	0	0.46	0	65.7	59.5	44.0	
7-8 AM	453	0.0	1500	453	0	0.47	0	65.5	59.2	43.7	
8-9 AM	809	0.0	1500	809	0	0.50	0	64.9	58.3	42.4	
9-10 AM	1238	0.0	OFF	1238	0	0.00	0	64.1	64.1	64.1	
10-11 AM	1827	0.0	OFF	1827	0	0.00	0	63.0	63.0	63.0	
11AM-NOON	2114	0.0	OFF	2114	0	0.00	0	62.5	62.5	62.5	
NOON-1PM	2318	0.0	OFF	2318	0	0.00	0	62.0	62.0	62.0	
1-2 PM	2378	0.0	OFF	2378	0	0.00	0	62.0	62.0	62.0	
2-3 PM	2513	0.0	OFF	2513	0	0.00	0	60.7	60.7	60.7	
3-4 PM	2872	0.0	OFF	2872	0	0.00	0	57.1	57.1	57.1	
4-5 PM	2730	0.0	OFF	2730	0	0.00	0	58.6	58.6	58.6	
5-6 PM	2511	0.0	OFF	2511	0	0.00	0	60.8	60.8	60.8	
6-7 PM	1893	0.0	OFF	1893	0	0.00	0	62.8	62.8	62.8	
7-8 PM	1395	0.0	1499	1395	0	0.90	0	63.8	53.2	33.3	
8-9 PM	1015	0.0	1500	1015	0	0.52	0	64.5	57.8	41.6	
9-10 PM	754	0.0	1500	754	0	0.50	0	65.0	58.4	42.5	
10-11 PM	748	0.0	1500	748	0	0.49	0	65.0	58.4	42.6	
11PM-MID	1412	0.0	1500	1412	0	0.91	0	63.8	53.0	32.7	

"OFF" INDICATES NO ROAD WORK (ALL LANES OPEN TO TRAFFIC)

*----- SITE BREAKDOWN DELAYS -----*	
BREAKDOWN DURATION (MINS)	0
RANGE OF QUEUE DELAY - MIN (VEH-H) MAX	0.0
AV BREAKDOWNS PER DAY	0.00
AV QUEUE DELAY/DAY (VEH-H)	0.0
AV TOTAL DELAY/DAY (VEH-H)	0.0

*----- SITE ACCIDENT DELAYS -----*	
BREAKDOWN DURATION (MINS)	0
RANGE OF QUEUE DELAY - MIN (VEH-H) MAX	0
AV BREAKDOWNS PER DAY	0
AV QUEUE DELAY/DAY (VEH-H)	0
AV TOTAL DELAY/DAY (VEH-H)	0

AVERAGE ACCIDENT NUMBERS (PIA/DAY)	
MAIN ROUTE WITHOUT WORKS	0.0238
MAIN ROUTE WITH WORKS	0.0232
'DIVERSION'	0.0000
<small>PIA: Personal Injury Accidents</small>	
IMPACTS ON ROAD USERS	
ROAD USER COSTS PER DAY	\$1,291
CONGESTED HOURS PER DAY*	0

\*Delays Exceeding User-Specified Maximum

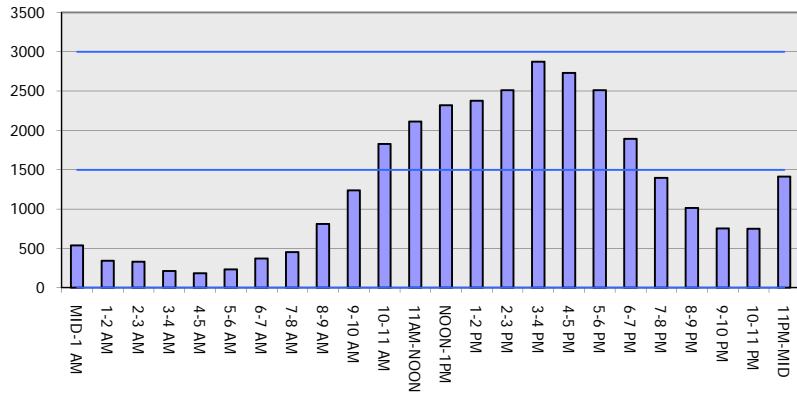
**USH 41: STH 29 TO CTH AAA (BROWN COUNTY)  
NIGHTTIME CLOSURE  
NO DIVERSION ROUTE (MAX QUEUE METHOD)**

**OCTOBER**  
Analyzed for 2009  
Construction Season

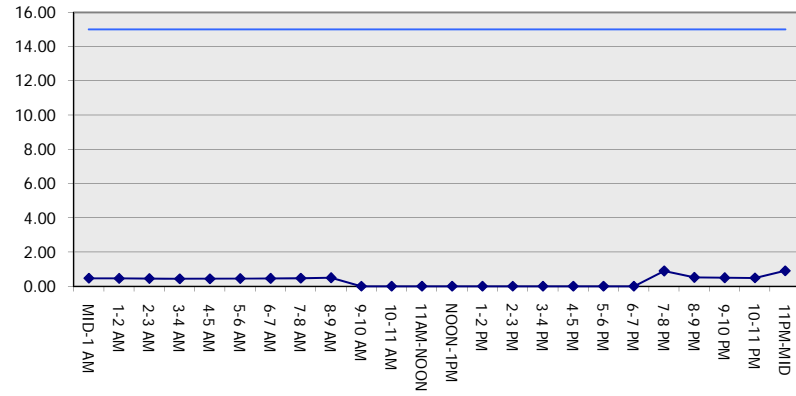
**GRAPHICAL REPRESENTATION OF TRAFFIC MODEL INPUT AND OUTPUT**

**SUNDAY SOUTHBOUND DIRECTION**

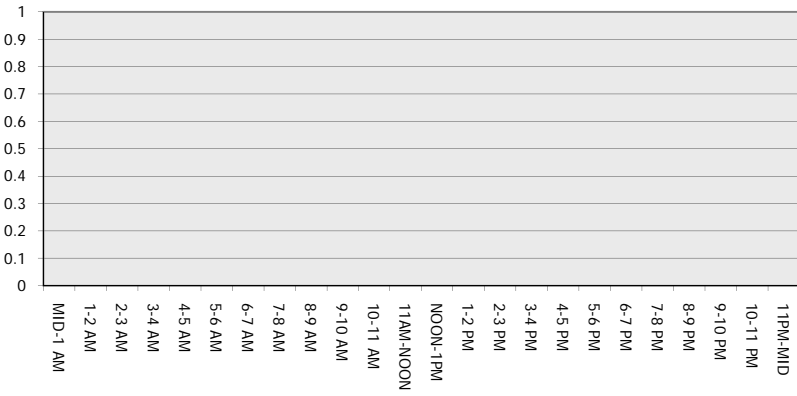
**Main Route - Traffic Demand (Vehicles Per Hour)**



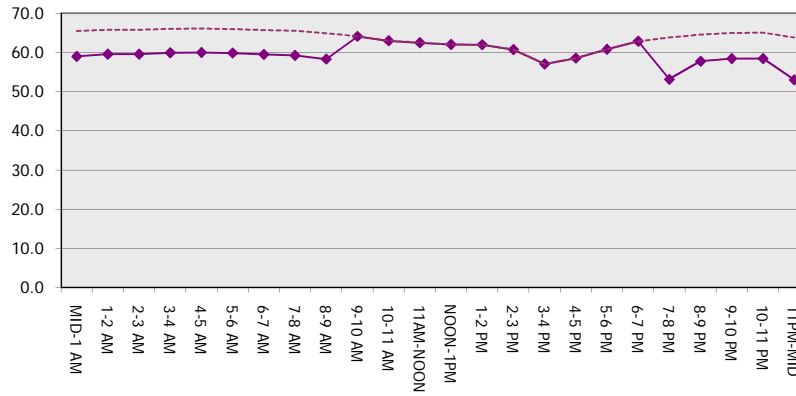
**Main Route Average Delay Per Vehicle (Minutes)**



**Main Route - Average Queue Length (Vehicles)**



**Main Route - Average Speed (MPH)**



<b>USH 41: STH 29 TO CTH AAA (BROWN COUNTY)                  NIGHTTIME CLOSURE                  NO DIVERSION ROUTE (MAX QUEUE METHOD)</b>	<b>OCTOBER</b>
	Analyzed for 2009 Construction Season

**SUMMARY OF TRAFFIC MODEL OUTPUT**

SUNDAY NORTHBOUND DIRECTION

TIME OF DAY	FLOWS AND CAPACITY IN VEH/HR						AVERAGE SPEEDS IN MPH			
	MAIN ROUTE		SITE CAPA CITY	FLOW		AV.DEL PER VEH (MINS)	AVERAGE QUEUE (VEH)	MAIN ROUTE		SITE
	DEMAND FLOW	PCT HEAVY		MAIN ROUTE	'DIVER TED'			WITHOUT WORK ZONE	WITH WORK ZONE	
MID-1 AM	369	0.0	1500	369	0	0.46	0	65.7	59.5	44.0
1-2 AM	221	0.0	1500	221	0	0.44	0	66.0	59.9	44.6
2-3 AM	236	0.0	1500	236	0	0.45	0	66.0	59.9	44.5
3-4 AM	172	0.0	1500	172	0	0.44	0	66.1	60.0	44.8
4-5 AM	142	0.0	1500	142	0	0.44	0	66.1	60.1	44.9
5-6 AM	272	0.0	1500	272	0	0.45	0	65.9	59.7	44.4
6-7 AM	379	0.0	1500	379	0	0.46	0	65.7	59.4	44.0
7-8 AM	676	0.0	1500	676	0	0.49	0	65.1	58.6	42.8
8-9 AM	1285	0.0	1499	1285	0	0.74	0	64.0	55.0	36.5
9-10 AM	1974	0.0	OFF	1974	0	0.00	0	62.7	62.7	62.7
10-11 AM	2197	0.0	OFF	2197	0	0.00	0	62.3	62.3	62.3
11AM-NOON	2061	0.0	OFF	2061	0	0.00	0	62.5	62.5	62.5
NOON-1PM	1835	0.0	OFF	1835	0	0.00	0	63.0	63.0	63.0
1-2 PM	1874	0.0	OFF	1874	0	0.00	0	62.9	62.9	62.9
2-3 PM	2100	0.0	OFF	2100	0	0.00	0	62.5	62.5	62.5
3-4 PM	2340	0.0	OFF	2340	0	0.00	0	62.0	62.0	62.0
4-5 PM	2387	0.0	OFF	2387	0	0.00	0	61.9	61.9	61.9
5-6 PM	1988	0.0	OFF	1988	0	0.00	0	62.7	62.7	62.7
6-7 PM	1576	0.0	OFF	1576	0	0.00	0	63.5	63.5	63.5
7-8 PM	1163	0.0	1500	1163	0	0.59	0	64.2	56.8	39.7
8-9 PM	848	0.0	1500	848	0	0.50	0	64.8	58.2	42.2
9-10 PM	563	0.0	1500	563	0	0.48	0	65.3	58.9	43.3
10-11 PM	407	0.0	1500	407	0	0.46	0	65.6	59.4	43.8
11PM-MID	291	0.0	1500	291	0	0.45	0	65.8	59.7	44.3

"OFF" INDICATES NO ROAD WORK (ALL LANES OPEN TO TRAFFIC)

*----- SITE BREAKDOWN DELAYS -----*	
BREAKDOWN DURATION (MINS)	0
RANGE OF QUEUE DELAY - MIN (VEH-H) MAX	0.0
AV BREAKDOWNS PER DAY	0.00
AV QUEUE DELAY/DAY (VEH-H)	0.0
AV TOTAL DELAY/DAY (VEH-H)	0.0

*----- SITE ACCIDENT DELAYS -----*	
BREAKDOWN DURATION (MINS)	0
RANGE OF QUEUE DELAY - MIN (VEH-H) MAX	0
AV BREAKDOWNS PER DAY	0
AV QUEUE DELAY/DAY (VEH-H)	0
AV TOTAL DELAY/DAY (VEH-H)	0

AVERAGE ACCIDENT NUMBERS (PIA/DAY)	
MAIN ROUTE WITHOUT WORKS	0.0209
MAIN ROUTE WITH WORKS	0.0204
'DIVERSION'	0.0000

PIA: Personal Injury Accidents

ECONOMIC IMPACT ON ROAD USERS	
ROAD USER COSTS PER DAY	\$900
CONGESTED HOURS PER DAY*	0

\*Delays Exceeding User-Specified Maximum

**USH 41: STH 29 TO CTH AAA (BROWN COUNTY)  
NIGHTTIME CLOSURE  
NO DIVERSION ROUTE (MAX QUEUE METHOD)**

**OCTOBER**

Analyzed for 2009  
Construction Season

**GRAPHICAL REPRESENTATION OF TRAFFIC MODEL INPUT AND OUTPUT**  
**SUNDAY NORTHBOUND DIRECTION**

