

USH 41: STH 29 TO CTH AAA (BROWN COUNTY) NIGHTTIME CLOSURE NO DIVERSION ROUTE (MAX QUEUE METHOD)	OCTOBER
	Analyzed for 2009 Construction Season

SUMMARY OF TRAFFIC MODEL OUTPUT

FRIDAY SOUTHBOUND DIRECTION

TIME OF DAY	FLOWS AND CAPACITY IN VEH/HR						AVERAGE SPEEDS IN MPH				
	MAIN ROUTE		SITE CAPA CITY	FLOW		AV.DEL PER VEH (MINS)	AVERAGE QUEUE (VEH)	MAIN ROUTE		SITE	
	DEMAND FLOW	PCT HEAVY		MAIN ROUTE	'DIVER TED'			WITHOUT WORK ZONE	WITH WORK ZONE		
MID-1 AM	264	0.0	1500	264	0	0.45	0	65.9	59.7	44.4	
1-2 AM	216	0.0	1500	216	0	0.44	0	66.0	59.9	44.6	
2-3 AM	206	0.0	1500	206	0	0.44	0	66.0	59.9	44.6	
3-4 AM	208	0.0	1500	208	0	0.44	0	66.0	59.9	44.6	
4-5 AM	529	0.0	1500	529	0	0.47	0	65.4	59.1	43.4	
5-6 AM	1350	0.0	OFF	1350	0	0.00	0	63.8	63.8	63.8	
6-7 AM	2651	0.0	OFF	2651	0	0.00	0	59.4	59.4	59.4	
7-8 AM	3444	0.0	OFF	3444	0	0.00	0	51.2	51.2	51.2	
8-9 AM	2211	0.0	OFF	2211	0	0.00	0	62.3	62.3	62.3	
9-10 AM	2042	0.0	OFF	2042	0	0.00	0	62.6	62.6	62.6	
10-11 AM	2187	0.0	OFF	2187	0	0.00	0	62.3	62.3	62.3	
11AM-NOON	2485	0.0	OFF	2485	0	0.00	0	61.0	61.0	61.0	
NOON-1PM	2734	0.0	OFF	2734	0	0.00	0	58.5	58.5	58.5	
1-2 PM	2755	0.0	OFF	2755	0	0.00	0	58.2	58.2	58.2	
2-3 PM	3064	0.0	OFF	3064	0	0.00	0	55.1	55.1	55.1	
3-4 PM	3426	0.0	OFF	3426	0	0.00	0	51.4	51.4	51.4	
4-5 PM	3715	0.0	OFF	3715	0	0.00	0	48.4	48.4	48.4	
5-6 PM	3265	0.0	OFF	3265	0	0.00	0	53.0	53.0	53.0	
6-7 PM	2052	0.0	OFF	2052	0	0.00	0	62.5	62.5	62.5	
7-8 PM	1496	0.0	1499	1496	0	1.80	22	63.6	45.5	31.4	
8-9 PM	1272	0.0	1500	1272	0	0.73	0	64.0	55.1	36.3	
9-10 PM	1218	0.0	1500	1218	0	0.66	0	64.1	55.9	37.9	
10-11 PM	1002	0.0	1500	1002	0	0.52	0	64.5	57.8	41.7	
11PM-MID	645	0.0	1500	645	0	0.48	0	65.2	58.7	43.0	

"OFF" INDICATES NO ROAD WORK (ALL LANES OPEN TO TRAFFIC)

----- SITE BREAKDOWN DELAYS -----	
BREAKDOWN DURATION (MINS)	0
RANGE OF QUEUE DELAY - MIN (VEH-H) MAX	0.0
AV BREAKDOWNS PER DAY	0.00
AV QUEUE DELAY/DAY (VEH-H)	0.0
AV TOTAL DELAY/DAY (VEH-H)	0.0

----- SITE ACCIDENT DELAYS -----	
BREAKDOWN DURATION (MINS)	0
RANGE OF QUEUE DELAY - MIN (VEH-H) MAX	0
AV BREAKDOWNS PER DAY	0
AV QUEUE DELAY/DAY (VEH-H)	0
AV TOTAL DELAY/DAY (VEH-H)	0

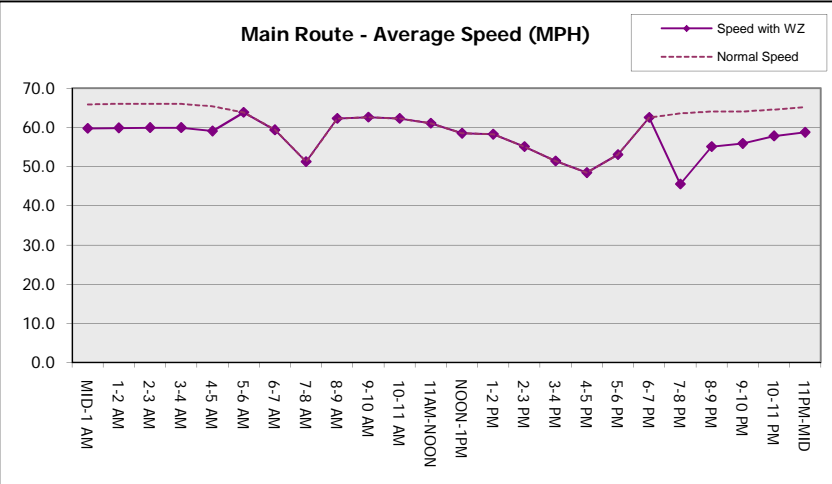
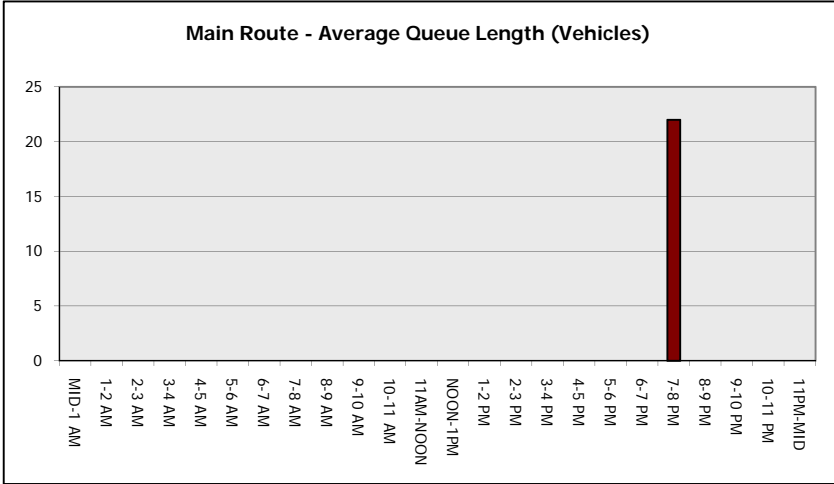
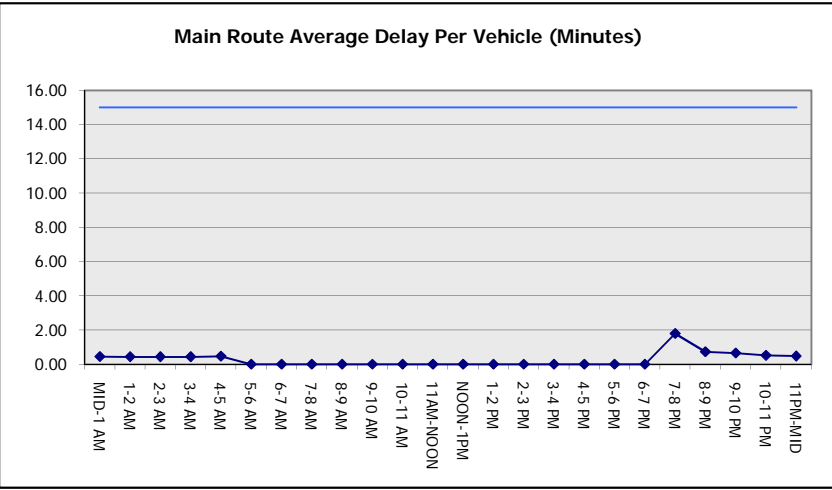
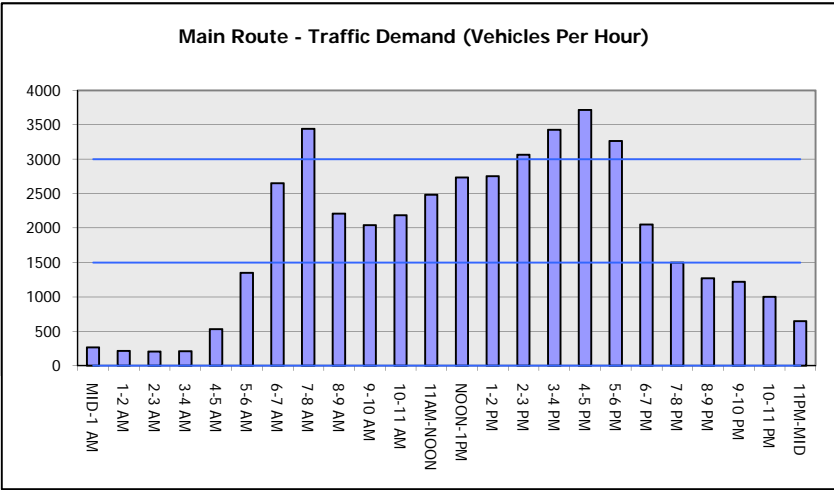
AVERAGE ACCIDENT NUMBERS (PIA/DAY)	
MAIN ROUTE WITHOUT WORKS	0.0339
MAIN ROUTE WITH WORKS	0.0335
'DIVERSION'	0.0000
PIA: Personal Injury Accidents	
IMPACTS ON ROAD USERS	
ROAD USER COSTS PER DAY	\$1,437
CONGESTED HOURS PER DAY*	0

*Delays Exceeding User-Specified Maximum

**USH 41: STH 29 TO CTH AAA (BROWN COUNTY)
NIGHTTIME CLOSURE
NO DIVERSION ROUTE (MAX QUEUE METHOD)**

OCTOBER
Analyzed for 2009
Construction Season

GRAPHICAL REPRESENTATION OF TRAFFIC MODEL INPUT AND OUTPUT
FRIDAY SOUTHBOUND DIRECTION



USH 41: STH 29 TO CTH AAA (BROWN COUNTY) NIGHTTIME CLOSURE NO DIVERSION ROUTE (MAX QUEUE METHOD)	OCTOBER
	Analyzed for 2009 Construction Season

SUMMARY OF TRAFFIC MODEL OUTPUT

FRIDAY NORTHBOUND DIRECTION

TIME OF DAY	FLOWS AND CAPACITY IN VEH/HR						AVERAGE SPEEDS IN MPH			
	MAIN ROUTE		SITE CAPA CITY	FLOW		AV.DEL PER VEH (MINS)	AVERAGE QUEUE (VEH)	MAIN ROUTE		SITE
	DEMAND FLOW	PCT HEAVY		MAIN ROUTE	'DIVER TED'			WITHOUT WORK ZONE	WITH WORK ZONE	
MID-1 AM	270	0.0	1500	270	0	0.45	0	65.9	59.7	44.4
1-2 AM	180	0.0	1500	180	0	0.44	0	66.1	60.0	44.8
2-3 AM	188	0.0	1500	188	0	0.44	0	66.0	60.0	44.7
3-4 AM	202	0.0	1500	202	0	0.44	0	66.0	59.9	44.6
4-5 AM	370	0.0	1500	370	0	0.46	0	65.7	59.5	44.0
5-6 AM	889	0.0	OFF	889	0	0.00	0	64.7	64.7	64.7
6-7 AM	2188	0.0	OFF	2188	0	0.00	0	62.3	62.3	62.3
7-8 AM	3571	0.0	OFF	3571	0	0.00	0	49.9	49.9	49.9
8-9 AM	2666	0.0	OFF	2666	0	0.00	0	59.2	59.2	59.2
9-10 AM	2234	0.0	OFF	2234	0	0.00	0	62.2	62.2	62.2
10-11 AM	2356	0.0	OFF	2356	0	0.00	0	62.0	62.0	62.0
11AM-NOON	2614	0.0	OFF	2614	0	0.00	0	59.7	59.7	59.7
NOON-1PM	2760	0.0	OFF	2760	0	0.00	0	58.2	58.2	58.2
1-2 PM	2755	0.0	OFF	2755	0	0.00	0	58.2	58.2	58.2
2-3 PM	3215	0.0	OFF	3215	0	0.00	0	53.5	53.5	53.5
3-4 PM	3758	0.0	OFF	3758	0	0.00	0	48.0	48.0	48.0
4-5 PM	4236	0.0	OFF	4236	0	0.00	0	43.1	43.1	43.1
5-6 PM	3893	0.0	OFF	3893	0	0.00	0	46.6	46.6	46.6
6-7 PM	2883	0.0	OFF	2883	0	0.00	0	56.9	56.9	56.9
7-8 PM	1868	0.0	1499	1868	0	8.63	228	62.9	21.8	30.8
8-9 PM	1450	0.0	1499	1450	0	14.50+	363	63.7	15.2	30.8
9-10 PM	1194	0.0	1499	1194	0	6.74	182	64.1	25.6	33.3
10-11 PM	888	0.0	1500	888	0	0.51	0	64.7	58.0	42.1
11PM-MID	638	0.0	1500	638	0	0.48	0	65.2	58.7	43.0

"OFF" INDICATES NO ROAD WORK (ALL LANES OPEN TO TRAFFIC)

+ INDICATES QUEUEING EXCEEDS USER-SPECIFIED MAXIMUM LIMIT

----- SITE BREAKDOWN DELAYS -----	
BREAKDOWN DURATION (MINS)	0
RANGE OF QUEUE DELAY - MIN (VEH-H) MAX	0.0
AV BREAKDOWNS PER DAY	0.00
AV QUEUE DELAY/DAY (VEH-H)	0.0
AV TOTAL DELAY/DAY (VEH-H)	0.0

----- SITE ACCIDENT DELAYS -----	
BREAKDOWN DURATION (MINS)	0
RANGE OF QUEUE DELAY - MIN (VEH-H) MAX	0
AV BREAKDOWNS PER DAY	0
AV QUEUE DELAY/DAY (VEH-H)	0
AV TOTAL DELAY/DAY (VEH-H)	0

AVERAGE ACCIDENT NUMBERS (PIA/DAY)	
MAIN ROUTE WITHOUT WORKS	0.0361
MAIN ROUTE WITH WORKS	0.0356
'DIVERSION'	0.0000

PIA: Personal Injury Accidents

ECONOMIC IMPACT ON ROAD USERS	
ROAD USER COSTS PER DAY	\$11,324
CONGESTED HOURS PER DAY*	1

*Delays Exceeding User-Specified Maximum

**USH 41: STH 29 TO CTH AAA (BROWN COUNTY)
NIGHTTIME CLOSURE
NO DIVERSION ROUTE (MAX QUEUE METHOD)**

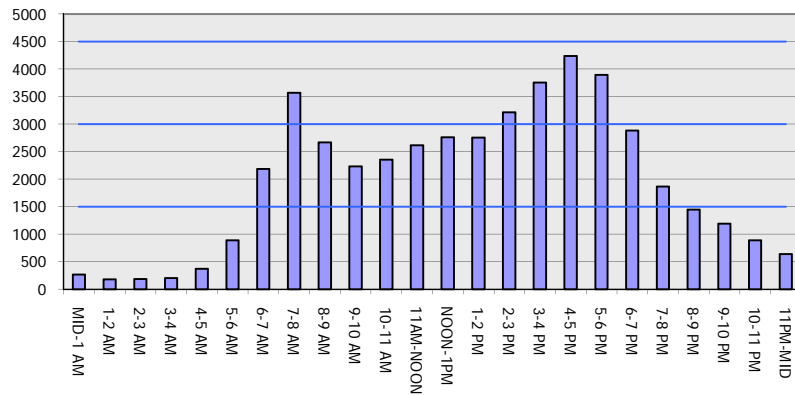
OCTOBER

Analyzed for 2009
Construction Season

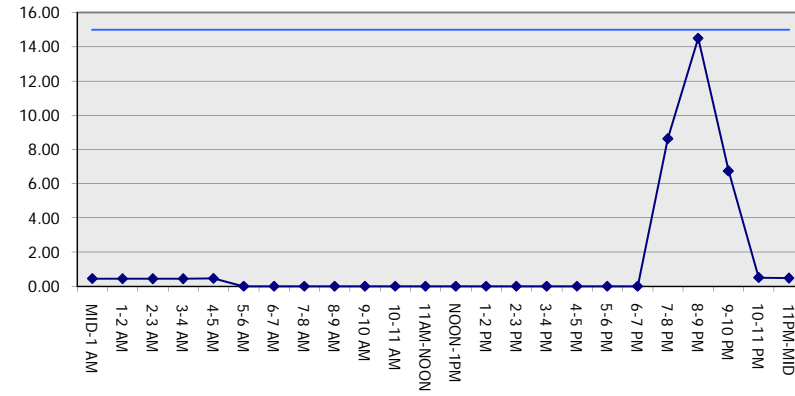
GRAPHICAL REPRESENTATION OF TRAFFIC MODEL INPUT AND OUTPUT

FRIDAY NORTHBOUND DIRECTION

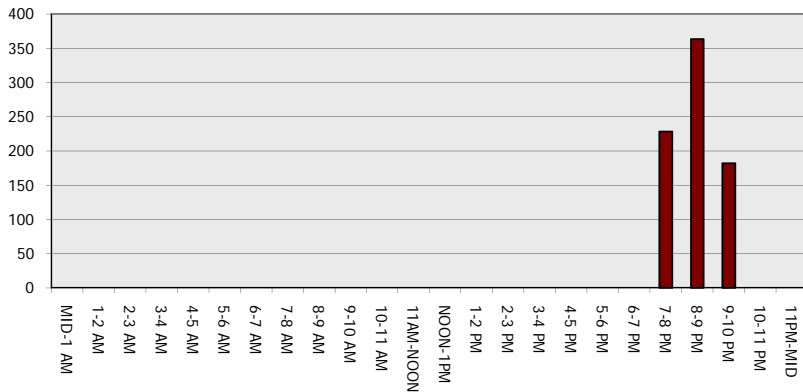
Main Route - Traffic Demand (Vehicles Per Hour)



Main Route Average Delay Per Vehicle (Minutes)



Main Route - Average Queue Length (Vehicles)



Main Route - Average Speed (MPH)

