

<b>USH 41: CTH G TO CTH F (BROWN COUNTY)</b> <b>NIGHTTIME CLOSURE</b> <b>NO DIVERSION ROUTE (MAX QUEUE METHOD)</b>	<b>OCTOBER</b>
	Analyzed for 2009 Construction Season

**SUMMARY OF TRAFFIC MODEL OUTPUT**

SUNDAY SOUTHBOUND DIRECTION

TIME OF DAY	FLOWS AND CAPACITY IN VEH/HR						AVERAGE SPEEDS IN MPH				
	MAIN ROUTE		SITE CAPA CITY	FLOW		AV.DEL PER VEH (MINS)	AVERAGE QUEUE (VEH)	MAIN ROUTE		SITE	
	DEMAND FLOW	PCT HEAVY		MAIN ROUTE	'DIVER TED'			WITHOUT WORK ZONE	WITH WORK ZONE		
MID-1 AM	427	0.0	1500	427	0	0.46	0	65.6	51.8	43.8	
1-2 AM	271	0.0	1500	271	0	0.45	0	65.9	52.3	44.4	
2-3 AM	260	0.0	1500	260	0	0.45	0	65.9	52.4	44.5	
3-4 AM	168	0.0	1500	168	0	0.44	0	66.1	52.7	44.8	
4-5 AM	144	0.0	1500	144	0	0.44	0	66.1	52.8	44.9	
5-6 AM	184	0.0	1500	184	0	0.44	0	66.0	52.6	44.8	
6-7 AM	294	0.0	1500	294	0	0.45	0	65.8	52.2	44.3	
7-8 AM	359	0.0	1500	359	0	0.46	0	65.7	52.0	44.0	
8-9 AM	642	0.0	1500	642	0	0.48	0	65.2	51.0	43.0	
9-10 AM	983	0.0	OFF	983	0	0.00	0	64.6	64.6	64.6	
10-11 AM	1450	0.0	OFF	1450	0	0.00	0	63.7	63.7	63.7	
11AM-NOON	1679	0.0	OFF	1679	0	0.00	0	63.3	63.3	63.3	
NOON-1PM	1841	0.0	OFF	1841	0	0.00	0	63.0	63.0	63.0	
1-2 PM	1888	0.0	OFF	1888	0	0.00	0	62.8	62.8	62.8	
2-3 PM	1995	0.0	OFF	1995	0	0.00	0	62.7	62.7	62.7	
3-4 PM	2280	0.0	OFF	2280	0	0.00	0	62.2	62.2	62.2	
4-5 PM	2167	0.0	OFF	2167	0	0.00	0	62.3	62.3	62.3	
5-6 PM	1993	0.0	OFF	1993	0	0.00	0	62.7	62.7	62.7	
6-7 PM	1503	0.0	OFF	1503	0	0.00	0	63.6	63.6	63.6	
7-8 PM	1108	0.0	1500	1108	0	0.53	0	64.3	49.6	41.3	
8-9 PM	805	0.0	1500	805	0	0.50	0	64.9	50.5	42.4	
9-10 PM	598	0.0	1500	598	0	0.48	0	65.3	51.2	43.2	
10-11 PM	593	0.0	1500	593	0	0.48	0	65.3	51.2	43.2	
11PM-MID	1121	0.0	1500	1121	0	0.53	0	64.3	49.4	41.2	

"OFF" INDICATES NO ROAD WORK (ALL LANES OPEN TO TRAFFIC)

*----- SITE BREAKDOWN DELAYS -----*	
BREAKDOWN DURATION (MINS)	0
RANGE OF QUEUE DELAY - MIN (VEH-H) MAX	0.0
AV BREAKDOWNS PER DAY	0.00
AV QUEUE DELAY/DAY (VEH-H)	0.0
AV TOTAL DELAY/DAY (VEH-H)	0.0

*----- SITE ACCIDENT DELAYS -----*	
BREAKDOWN DURATION (MINS)	0
RANGE OF QUEUE DELAY - MIN (VEH-H) MAX	0
AV BREAKDOWNS PER DAY	0
AV QUEUE DELAY/DAY (VEH-H)	0
AV TOTAL DELAY/DAY (VEH-H)	0

AVERAGE ACCIDENT NUMBERS (PIA/DAY)	
MAIN ROUTE WITHOUT WORKS	0.0075
MAIN ROUTE WITH WORKS	0.0070
'DIVERSION'	0.0000
PIA: Personal Injury Accidents	
IMPACTS ON ROAD USERS	
ROAD USER COSTS PER DAY	\$802
CONGESTED HOURS PER DAY*	0

\*Delays Exceeding User-Specified Maximum

**USH 41: CTH G TO CTH F (BROWN COUNTY)  
NIGHTTIME CLOSURE  
NO DIVERSION ROUTE (MAX QUEUE METHOD)**

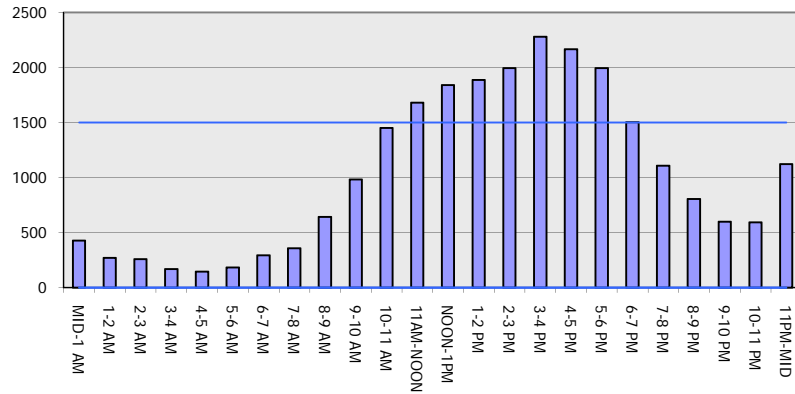
**OCTOBER**

Analyzed for 2009  
Construction Season

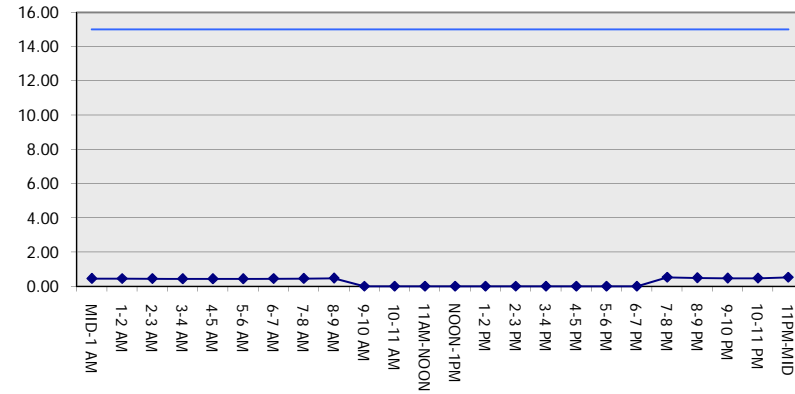
**GRAPHICAL REPRESENTATION OF TRAFFIC MODEL INPUT AND OUTPUT**

**SUNDAY SOUTHBOUND DIRECTION**

**Main Route - Traffic Demand (Vehicles Per Hour)**



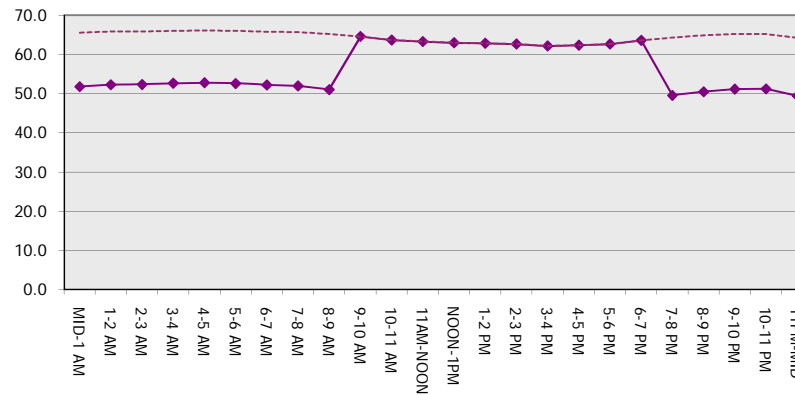
**Main Route Average Delay Per Vehicle (Minutes)**



**Main Route - Average Queue Length (Vehicles)**



**Main Route - Average Speed (MPH)**



<b>USH 41: CTH G TO CTH F (BROWN COUNTY)</b> <b>NIGHTTIME CLOSURE</b> <b>NO DIVERSION ROUTE (MAX QUEUE METHOD)</b>	<b>OCTOBER</b>
	Analyzed for 2009 Construction Season

**SUMMARY OF TRAFFIC MODEL OUTPUT**

SUNDAY NORTHBOUND DIRECTION

TIME OF DAY	FLOWS AND CAPACITY IN VEH/HR						AVERAGE SPEEDS IN MPH			
	MAIN ROUTE		SITE CAPA CITY	FLOW		AV.DEL PER VEH (MINS)	AVERAGE QUEUE (VEH)	MAIN ROUTE		SITE
	DEMAND FLOW	PCT HEAVY		MAIN ROUTE	'DIVER TED'			WITHOUT WORK ZONE	WITH WORK ZONE	
MID-1 AM	293	0.0	1500	293	0	0.45	0	65.8	52.2	44.3
1-2 AM	176	0.0	1500	176	0	0.44	0	66.1	52.7	44.8
2-3 AM	188	0.0	1500	188	0	0.44	0	66.0	52.6	44.7
3-4 AM	137	0.0	1500	137	0	0.44	0	66.1	52.8	45.0
4-5 AM	112	0.0	1500	112	0	0.43	0	66.2	52.8	45.0
5-6 AM	216	0.0	1500	216	0	0.44	0	66.0	52.5	44.6
6-7 AM	302	0.0	1500	302	0	0.45	0	65.8	52.2	44.3
7-8 AM	536	0.0	1500	536	0	0.47	0	65.4	51.4	43.3
8-9 AM	1020	0.0	1499	1020	0	0.54	0	64.5	49.4	41.1
9-10 AM	1567	0.0	OFF	1567	0	0.00	0	63.5	63.5	63.5
10-11 AM	1744	0.0	OFF	1744	0	0.00	0	63.2	63.2	63.2
11AM-NOON	1636	0.0	OFF	1636	0	0.00	0	63.3	63.3	63.3
NOON-1PM	1457	0.0	OFF	1457	0	0.00	0	63.7	63.7	63.7
1-2 PM	1487	0.0	OFF	1487	0	0.00	0	63.6	63.6	63.6
2-3 PM	1668	0.0	OFF	1668	0	0.00	0	63.3	63.3	63.3
3-4 PM	1857	0.0	OFF	1857	0	0.00	0	62.9	62.9	62.9
4-5 PM	1895	0.0	OFF	1895	0	0.00	0	62.8	62.8	62.8
5-6 PM	1578	0.0	OFF	1578	0	0.00	0	63.5	63.5	63.5
6-7 PM	1251	0.0	OFF	1251	0	0.00	0	64.0	64.0	64.0
7-8 PM	922	0.0	1500	922	0	0.51	0	64.6	50.1	42.0
8-9 PM	673	0.0	1500	673	0	0.49	0	65.1	50.9	42.8
9-10 PM	448	0.0	1500	448	0	0.47	0	65.6	51.7	43.7
10-11 PM	323	0.0	1500	323	0	0.45	0	65.8	52.1	44.2
11PM-MID	232	0.0	1500	232	0	0.44	0	66.0	52.5	44.5

"OFF" INDICATES NO ROAD WORK (ALL LANES OPEN TO TRAFFIC)

*----- SITE BREAKDOWN DELAYS -----*	
BREAKDOWN DURATION (MINS)	0
RANGE OF QUEUE DELAY - MIN (VEH-H) MAX	0.0
AV BREAKDOWNS PER DAY	0.00
AV QUEUE DELAY/DAY (VEH-H)	0.0
AV TOTAL DELAY/DAY (VEH-H)	0.0

*----- SITE ACCIDENT DELAYS -----*	
BREAKDOWN DURATION (MINS)	0
RANGE OF QUEUE DELAY - MIN (VEH-H) MAX	0
AV BREAKDOWNS PER DAY	0
AV QUEUE DELAY/DAY (VEH-H)	0
AV TOTAL DELAY/DAY (VEH-H)	0

AVERAGE ACCIDENT NUMBERS (PIA/DAY)	
MAIN ROUTE WITHOUT WORKS	0.0066
MAIN ROUTE WITH WORKS	0.0062
'DIVERSION'	0.0000

PIA: Personal Injury Accidents

ECONOMIC IMPACT ON ROAD USERS	
ROAD USER COSTS PER DAY	\$632
CONGESTED HOURS PER DAY*	0

\*Delays Exceeding User-Specified Maximum

**USH 41: CTH G TO CTH F (BROWN COUNTY)  
NIGHTTIME CLOSURE  
NO DIVERSION ROUTE (MAX QUEUE METHOD)**

**OCTOBER**

Analyzed for 2009  
Construction Season

**GRAPHICAL REPRESENTATION OF TRAFFIC MODEL INPUT AND OUTPUT**  
**SUNDAY NORTHBOUND DIRECTION**

