

USH 41: CTH G TO CTH F (BROWN COUNTY) NIGHTTIME CLOSURE NO DIVERSION ROUTE (MAX QUEUE METHOD)	OCTOBER
	Analyzed for 2009 Construction Season

SUMMARY OF TRAFFIC MODEL OUTPUT

MON-THUR SOUTHBOUND DIRECTION

TIME OF DAY	FLOWS AND CAPACITY IN VEH/HR						AVERAGE SPEEDS IN MPH				
	MAIN ROUTE		SITE CAPA CITY	FLOW		AV.DEL PER VEH (MINS)	AVERAGE QUEUE (VEH)	MAIN ROUTE		SITE	
	DEMAND FLOW	PCT HEAVY		MAIN ROUTE	'DIVER TED'			WITHOUT WORK ZONE	WITH WORK ZONE		
MID-1 AM	300	0.0	1500	300	0	0.45	0	65.8	52.2	44.3	
1-2 AM	149	0.0	1500	149	0	0.44	0	66.1	52.7	44.9	
2-3 AM	130	0.0	1500	130	0	0.44	0	66.1	52.8	45.0	
3-4 AM	164	0.0	1500	164	0	0.44	0	66.1	52.7	44.8	
4-5 AM	401	0.0	1500	401	0	0.46	0	65.6	51.9	43.9	
5-6 AM	1204	0.0	OFF	1204	0	0.00	0	64.1	64.1	64.1	
6-7 AM	2322	0.0	OFF	2322	0	0.00	0	62.0	62.0	62.0	
7-8 AM	2992	0.0	OFF	2992	0	0.00	0	55.8	55.8	55.8	
8-9 AM	1847	0.0	OFF	1847	0	0.00	0	63.0	63.0	63.0	
9-10 AM	1546	0.0	OFF	1546	0	0.00	0	63.5	63.5	63.5	
10-11 AM	1542	0.0	OFF	1542	0	0.00	0	63.5	63.5	63.5	
11AM-NOON	1662	0.0	OFF	1662	0	0.00	0	63.3	63.3	63.3	
NOON-1PM	1799	0.0	OFF	1799	0	0.00	0	63.0	63.0	63.0	
1-2 PM	1876	0.0	OFF	1876	0	0.00	0	62.9	62.9	62.9	
2-3 PM	2038	0.0	OFF	2038	0	0.00	0	62.6	62.6	62.6	
3-4 PM	2425	0.0	OFF	2425	0	0.00	0	61.7	61.7	61.7	
4-5 PM	2916	0.0	OFF	2916	0	0.00	0	56.6	56.6	56.6	
5-6 PM	2628	0.0	OFF	2628	0	0.00	0	59.6	59.6	59.6	
6-7 PM	1503	0.0	OFF	1503	0	0.00	0	63.6	63.6	63.6	
7-8 PM	1060	0.0	1500	1060	0	0.52	0	64.4	49.7	41.5	
8-9 PM	904	0.0	1500	904	0	0.51	0	64.7	50.2	42.0	
9-10 PM	840	0.0	1500	840	0	0.50	0	64.8	50.4	42.2	
10-11 PM	518	0.0	1500	518	0	0.47	0	65.4	51.5	43.4	
11PM-MID	334	0.0	1500	334	0	0.45	0	65.8	52.1	44.2	

"OFF" INDICATES NO ROAD WORK (ALL LANES OPEN TO TRAFFIC)

----- SITE BREAKDOWN DELAYS -----	
BREAKDOWN DURATION (MINS)	0
RANGE OF QUEUE DELAY - MIN (VEH-H) MAX	0.0
AV BREAKDOWNS PER DAY	0.00
AV QUEUE DELAY/DAY (VEH-H)	0.0
AV TOTAL DELAY/DAY (VEH-H)	0.0

----- SITE ACCIDENT DELAYS -----	
BREAKDOWN DURATION (MINS)	0
RANGE OF QUEUE DELAY - MIN (VEH-H) MAX	0
AV BREAKDOWNS PER DAY	0
AV QUEUE DELAY/DAY (VEH-H)	0
AV TOTAL DELAY/DAY (VEH-H)	0

AVERAGE ACCIDENT NUMBERS (PIA/DAY)	
MAIN ROUTE WITHOUT WORKS	0.0100
MAIN ROUTE WITH WORKS	0.0097
'DIVERSION'	0.0000
<small>PIA: Personal Injury Accidents</small>	
IMPACTS ON ROAD USERS	
ROAD USER COSTS PER DAY	\$485
CONGESTED HOURS PER DAY*	0

*Delays Exceeding User-Specified Maximum

**USH 41: CTH G TO CTH F (BROWN COUNTY)
NIGHTTIME CLOSURE
NO DIVERSION ROUTE (MAX QUEUE METHOD)**

OCTOBER

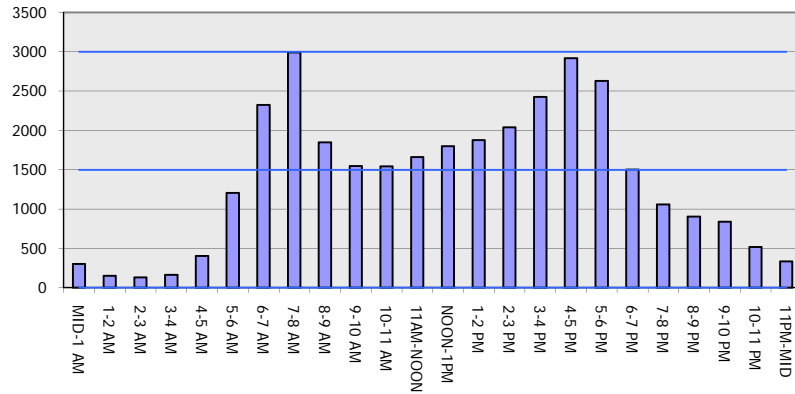
Analyzed for 2009
Construction Season

GRAPHICAL REPRESENTATION OF TRAFFIC MODEL INPUT AND OUTPUT

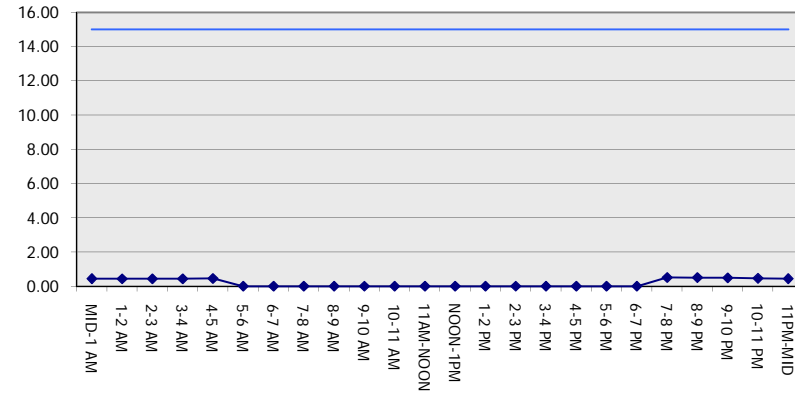
MON-THUR

SOUTHBOUND DIRECTION

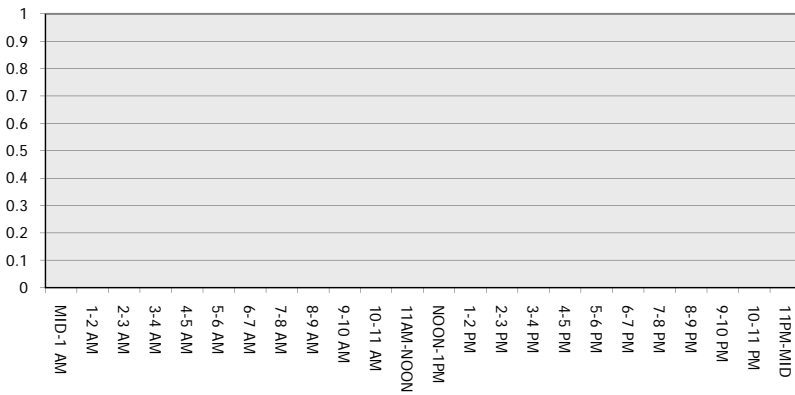
Main Route - Traffic Demand (Vehicles Per Hour)



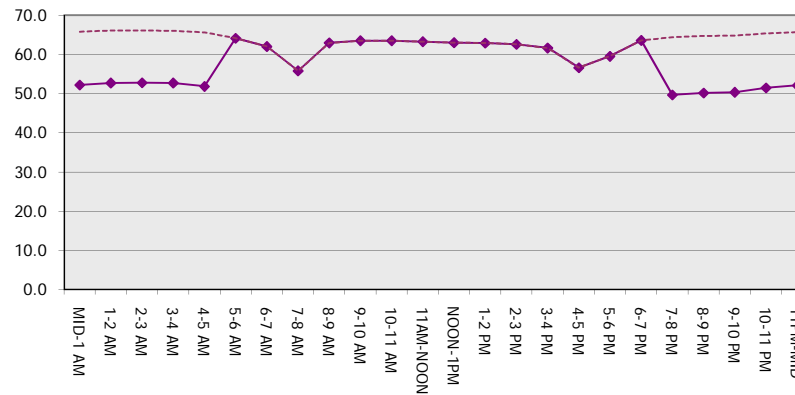
Main Route Average Delay Per Vehicle (Minutes)



Main Route - Average Queue Length (Vehicles)



Main Route - Average Speed (MPH)



USH 41: CTH G TO CTH F (BROWN COUNTY) NIGHTTIME CLOSURE NO DIVERSION ROUTE (MAX QUEUE METHOD)	OCTOBER
	Analyzed for 2009 Construction Season

SUMMARY OF TRAFFIC MODEL OUTPUT

MON-THUR NORTHBOUND DIRECTION

TIME OF DAY	FLOWS AND CAPACITY IN VEH/HR							AVERAGE SPEEDS IN MPH		
	MAIN ROUTE		SITE CAPA CITY	FLOW		AV.DEL PER VEH (MINS)	AVERAGE QUEUE (VEH)	MAIN ROUTE		SITE
	DEMAND FLOW	PCT HEAVY		MAIN ROUTE	'DIVER TED'			WITHOUT WORK ZONE	WITH WORK ZONE	
MID-1 AM	176	0.0	1500	176	0	0.44	0	66.1	52.7	44.8
1-2 AM	109	0.0	1500	109	0	0.43	0	66.2	52.9	45.0
2-3 AM	125	0.0	1500	125	0	0.43	0	66.1	52.8	45.0
3-4 AM	136	0.0	1500	136	0	0.44	0	66.1	52.8	45.0
4-5 AM	278	0.0	1500	278	0	0.45	0	65.9	52.3	44.4
5-6 AM	759	0.0	OFF	759	0	0.00	0	65.0	65.0	65.0
6-7 AM	1869	0.0	OFF	1869	0	0.00	0	62.9	62.9	62.9
7-8 AM	3079	0.0	OFF	3079	0	0.00	0	55.0	55.0	55.0
8-9 AM	2157	0.0	OFF	2157	0	0.00	0	62.3	62.3	62.3
9-10 AM	1641	0.0	OFF	1641	0	0.00	0	63.3	63.3	63.3
10-11 AM	1569	0.0	OFF	1569	0	0.00	0	63.5	63.5	63.5
11AM-NOON	1697	0.0	OFF	1697	0	0.00	0	63.2	63.2	63.2
NOON-1PM	1730	0.0	OFF	1730	0	0.00	0	63.2	63.2	63.2
1-2 PM	1716	0.0	OFF	1716	0	0.00	0	63.2	63.2	63.2
2-3 PM	2026	0.0	OFF	2026	0	0.00	0	62.6	62.6	62.6
3-4 PM	2517	0.0	OFF	2517	0	0.00	0	60.7	60.7	60.7
4-5 PM	3132	0.0	OFF	3132	0	0.00	0	54.4	54.4	54.4
5-6 PM	2802	0.0	OFF	2802	0	0.00	0	57.8	57.8	57.8
6-7 PM	1664	0.0	OFF	1664	0	0.00	0	63.3	63.3	63.3
7-8 PM	1051	0.0	1500	1051	0	0.52	0	64.4	49.7	41.5
8-9 PM	796	0.0	1500	796	0	0.50	0	64.9	50.5	42.4
9-10 PM	679	0.0	1500	679	0	0.49	0	65.1	50.9	42.8
10-11 PM	485	0.0	1500	485	0	0.47	0	65.5	51.6	43.6
11PM-MID	304	0.0	1500	304	0	0.45	0	65.8	52.2	44.3

"OFF" INDICATES NO ROAD WORK (ALL LANES OPEN TO TRAFFIC)

----- SITE BREAKDOWN DELAYS -----	
BREAKDOWN DURATION (MINS)	0
RANGE OF QUEUE DELAY - MIN (VEH-H) MAX	0.0
AV BREAKDOWNS PER DAY	0.00
AV QUEUE DELAY/DAY (VEH-H)	0.0
AV TOTAL DELAY/DAY (VEH-H)	0.0

----- SITE ACCIDENT DELAYS -----	
BREAKDOWN DURATION (MINS)	0
RANGE OF QUEUE DELAY - MIN (VEH-H) MAX	0
AV BREAKDOWNS PER DAY	0
AV QUEUE DELAY/DAY (VEH-H)	0
AV TOTAL DELAY/DAY (VEH-H)	0

AVERAGE ACCIDENT NUMBERS (PIA/DAY)	
MAIN ROUTE WITHOUT WORKS	0.0098
MAIN ROUTE WITH WORKS	0.0096
'DIVERSION'	0.0000

PIA: Personal Injury Accidents

ECONOMIC IMPACT ON ROAD USERS	
ROAD USER COSTS PER DAY	\$415
CONGESTED HOURS PER DAY*	0

*Delays Exceeding User-Specified Maximum

**USH 41: CTH G TO CTH F (BROWN COUNTY)
NIGHTTIME CLOSURE
NO DIVERSION ROUTE (MAX QUEUE METHOD)**

OCTOBER

Analyzed for 2009
Construction Season

**GRAPHICAL REPRESENTATION OF TRAFFIC MODEL INPUT AND OUTPUT
MON-THUR NORTHBOUND DIRECTION**

