

<b>USH 41: CTH G TO CTH F (BROWN COUNTY)</b> <b>NIGHTTIME CLOSURE</b> <b>NO DIVERSION ROUTE (MAX QUEUE METHOD)</b>	<b>OCTOBER</b>
	Analyzed for 2009 Construction Season

**SUMMARY OF TRAFFIC MODEL OUTPUT**

FRIDAY          SOUTHBOUND DIRECTION

TIME OF DAY	FLOWS AND CAPACITY IN VEH/HR						AVERAGE SPEEDS IN MPH				
	MAIN ROUTE		SITE CAPA CITY	FLOW		AV.DEL PER VEH (MINS)	AVERAGE QUEUE (VEH)	MAIN ROUTE		SITE	
	DEMAND FLOW	PCT HEAVY		MAIN ROUTE	'DIVER TED'			WITHOUT WORK ZONE	WITH WORK ZONE		
MID-1 AM	210	0.0	1500	210	0	0.44	0	66.0	52.5	44.6	
1-2 AM	172	0.0	1500	172	0	0.44	0	66.1	52.7	44.8	
2-3 AM	164	0.0	1500	164	0	0.44	0	66.1	52.7	44.8	
3-4 AM	166	0.0	1500	166	0	0.44	0	66.1	52.7	44.8	
4-5 AM	419	0.0	1500	419	0	0.46	0	65.6	51.8	43.8	
5-6 AM	1072	0.0	OFF	1072	0	0.00	0	64.4	64.4	64.4	
6-7 AM	2105	0.0	OFF	2105	0	0.00	0	62.5	62.5	62.5	
7-8 AM	2734	0.0	OFF	2734	0	0.00	0	58.5	58.5	58.5	
8-9 AM	1755	0.0	OFF	1755	0	0.00	0	63.1	63.1	63.1	
9-10 AM	1621	0.0	OFF	1621	0	0.00	0	63.3	63.3	63.3	
10-11 AM	1737	0.0	OFF	1737	0	0.00	0	63.2	63.2	63.2	
11AM-NOON	1972	0.0	OFF	1972	0	0.00	0	62.7	62.7	62.7	
NOON-1PM	2170	0.0	OFF	2170	0	0.00	0	62.3	62.3	62.3	
1-2 PM	2186	0.0	OFF	2186	0	0.00	0	62.3	62.3	62.3	
2-3 PM	2431	0.0	OFF	2431	0	0.00	0	61.6	61.6	61.6	
3-4 PM	2720	0.0	OFF	2720	0	0.00	0	58.6	58.6	58.6	
4-5 PM	2949	0.0	OFF	2949	0	0.00	0	56.3	56.3	56.3	
5-6 PM	2592	0.0	OFF	2592	0	0.00	0	59.9	59.9	59.9	
6-7 PM	1629	0.0	OFF	1629	0	0.00	0	63.3	63.3	63.3	
7-8 PM	1187	0.0	1500	1187	0	0.62	0	64.1	47.6	38.9	
8-9 PM	1010	0.0	1500	1010	0	0.52	0	64.5	49.9	41.7	
9-10 PM	967	0.0	1500	967	0	0.52	0	64.6	50.0	41.8	
10-11 PM	796	0.0	1500	796	0	0.50	0	64.9	50.5	42.4	
11PM-MID	513	0.0	1500	513	0	0.47	0	65.5	51.5	43.5	

**"OFF" INDICATES NO ROAD WORK (ALL LANES OPEN TO TRAFFIC)**

*----- SITE BREAKDOWN DELAYS -----*	
BREAKDOWN DURATION (MINS)	0
RANGE OF QUEUE DELAY - MIN (VEH-H) MAX	0.0
AV BREAKDOWNS PER DAY	0.00
AV QUEUE DELAY/DAY (VEH-H)	0.0
AV TOTAL DELAY/DAY (VEH-H)	0.0

*----- SITE ACCIDENT DELAYS -----*	
BREAKDOWN DURATION (MINS)	0
RANGE OF QUEUE DELAY - MIN (VEH-H) MAX	0
AV BREAKDOWNS PER DAY	0
AV QUEUE DELAY/DAY (VEH-H)	0
AV TOTAL DELAY/DAY (VEH-H)	0

AVERAGE ACCIDENT NUMBERS (PIA/DAY)	
MAIN ROUTE WITHOUT WORKS	0.0107
MAIN ROUTE WITH WORKS	0.0103
'DIVERSION'	0.0000
<small>PIA: Personal Injury Accidents</small>	
IMPACTS ON ROAD USERS	
ROAD USER COSTS PER DAY	\$645
CONGESTED HOURS PER DAY*	0

\*Delays Exceeding User-Specified Maximum

**USH 41: CTH G TO CTH F (BROWN COUNTY)  
NIGHTTIME CLOSURE  
NO DIVERSION ROUTE (MAX QUEUE METHOD)**

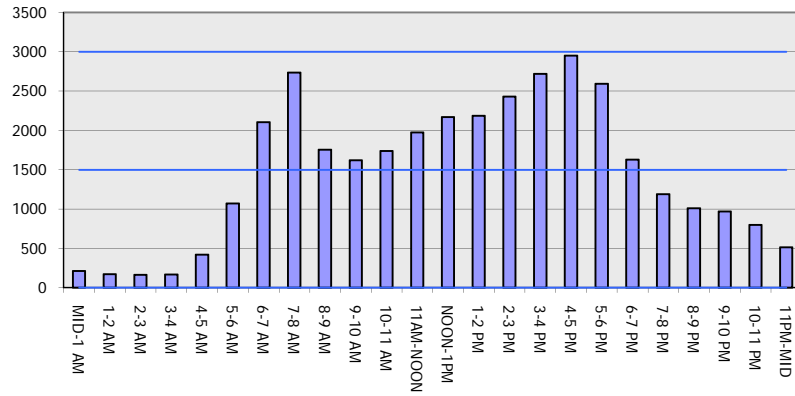
**OCTOBER**

Analyzed for 2009  
Construction Season

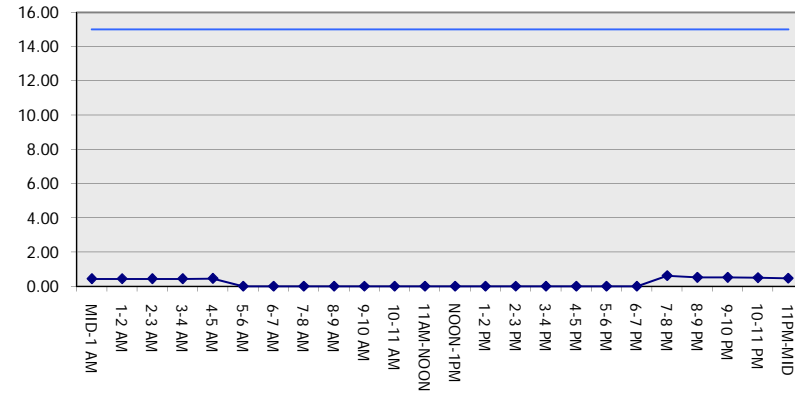
**GRAPHICAL REPRESENTATION OF TRAFFIC MODEL INPUT AND OUTPUT**

**FRIDAY SOUTHBOUND DIRECTION**

**Main Route - Traffic Demand (Vehicles Per Hour)**



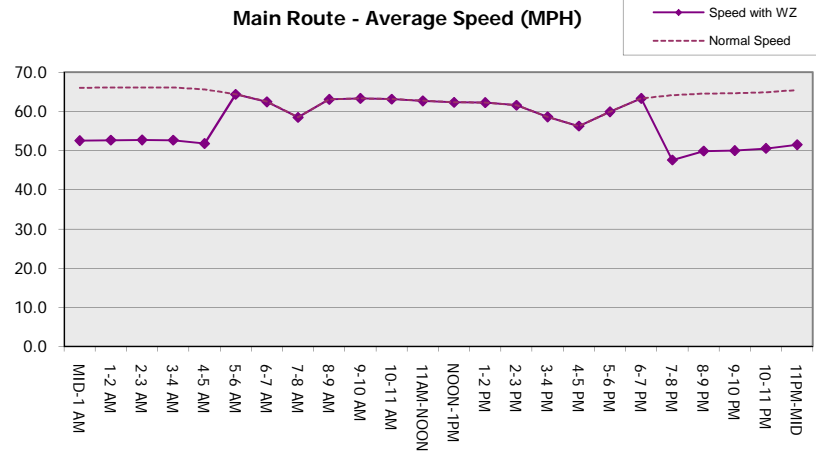
**Main Route Average Delay Per Vehicle (Minutes)**



**Main Route - Average Queue Length (Vehicles)**



**Main Route - Average Speed (MPH)**



<b>USH 41: CTH G TO CTH F (BROWN COUNTY)</b> <b>NIGHTTIME CLOSURE</b> <b>NO DIVERSION ROUTE (MAX QUEUE METHOD)</b>	<b>OCTOBER</b>
	Analyzed for 2009 Construction Season

**SUMMARY OF TRAFFIC MODEL OUTPUT**

FRIDAY NORTHBOUND DIRECTION

TIME OF DAY	FLOWS AND CAPACITY IN VEH/HR							AVERAGE SPEEDS IN MPH		
	MAIN ROUTE		SITE CAPA CITY	FLOW		AV.DEL PER VEH (MINS)	AVERAGE QUEUE (VEH)	MAIN ROUTE		SITE
	DEMAND FLOW	PCT HEAVY		MAIN ROUTE	'DIVER TED'			WITHOUT WORK ZONE	WITH WORK ZONE	
MID-1 AM	214	0.0	1500	214	0	0.44	0	66.0	52.5	44.6
1-2 AM	143	0.0	1500	143	0	0.44	0	66.1	52.8	44.9
2-3 AM	149	0.0	1500	149	0	0.44	0	66.1	52.7	44.9
3-4 AM	161	0.0	1500	161	0	0.44	0	66.1	52.7	44.8
4-5 AM	293	0.0	1500	293	0	0.45	0	65.8	52.2	44.3
5-6 AM	705	0.0	OFF	705	0	0.00	0	65.1	65.1	65.1
6-7 AM	1738	0.0	OFF	1738	0	0.00	0	63.2	63.2	63.2
7-8 AM	2835	0.0	OFF	2835	0	0.00	0	57.4	57.4	57.4
8-9 AM	2116	0.0	OFF	2116	0	0.00	0	62.5	62.5	62.5
9-10 AM	1774	0.0	OFF	1774	0	0.00	0	63.1	63.1	63.1
10-11 AM	1870	0.0	OFF	1870	0	0.00	0	62.9	62.9	62.9
11AM-NOON	2074	0.0	OFF	2074	0	0.00	0	62.5	62.5	62.5
NOON-1PM	2191	0.0	OFF	2191	0	0.00	0	62.3	62.3	62.3
1-2 PM	2186	0.0	OFF	2186	0	0.00	0	62.3	62.3	62.3
2-3 PM	2552	0.0	OFF	2552	0	0.00	0	60.4	60.4	60.4
3-4 PM	2983	0.0	OFF	2983	0	0.00	0	56.0	56.0	56.0
4-5 PM	3362	0.0	OFF	3362	0	0.00	0	52.0	52.0	52.0
5-6 PM	3090	0.0	OFF	3090	0	0.00	0	54.8	54.8	54.8
6-7 PM	2288	0.0	OFF	2288	0	0.00	0	62.1	62.1	62.1
7-8 PM	1483	0.0	1499	1483	0	1.92	28	63.6	30.7	32.0
8-9 PM	1151	0.0	1500	1151	0	0.57	0	64.2	48.6	40.1
9-10 PM	948	0.0	1500	948	0	0.51	0	64.6	50.1	41.9
10-11 PM	705	0.0	1500	705	0	0.49	0	65.1	50.9	42.7
11PM-MID	506	0.0	1500	506	0	0.47	0	65.5	51.5	43.5

"OFF" INDICATES NO ROAD WORK (ALL LANES OPEN TO TRAFFIC)

*----- SITE BREAKDOWN DELAYS -----*	
BREAKDOWN DURATION (MINS)	0
RANGE OF QUEUE DELAY - MIN (VEH-H) MAX	0.0
AV BREAKDOWNS PER DAY	0.00
AV QUEUE DELAY/DAY (VEH-H)	0.0
AV TOTAL DELAY/DAY (VEH-H)	0.0

*----- SITE ACCIDENT DELAYS -----*	
BREAKDOWN DURATION (MINS)	0
RANGE OF QUEUE DELAY - MIN (VEH-H) MAX	0
AV BREAKDOWNS PER DAY	0
AV QUEUE DELAY/DAY (VEH-H)	0
AV TOTAL DELAY/DAY (VEH-H)	0

AVERAGE ACCIDENT NUMBERS (PIA/DAY)	
MAIN ROUTE WITHOUT WORKS	0.0114
MAIN ROUTE WITH WORKS	0.0110
'DIVERSION'	0.0000

PIA: Personal Injury Accidents

ECONOMIC IMPACT ON ROAD USERS	
ROAD USER COSTS PER DAY	\$1,107
CONGESTED HOURS PER DAY*	0

\*Delays Exceeding User-Specified Maximum

**USH 41: CTH G TO CTH F (BROWN COUNTY)  
NIGHTTIME CLOSURE  
NO DIVERSION ROUTE (MAX QUEUE METHOD)**

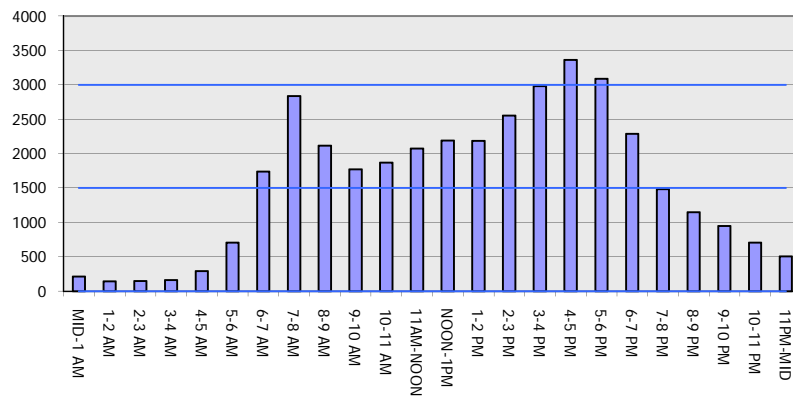
**OCTOBER**

Analyzed for 2009  
Construction Season

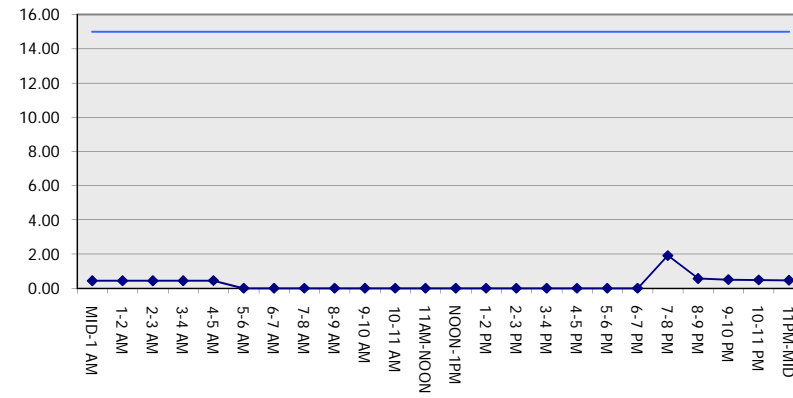
**GRAPHICAL REPRESENTATION OF TRAFFIC MODEL INPUT AND OUTPUT**

**FRIDAY NORTHBOUND DIRECTION**

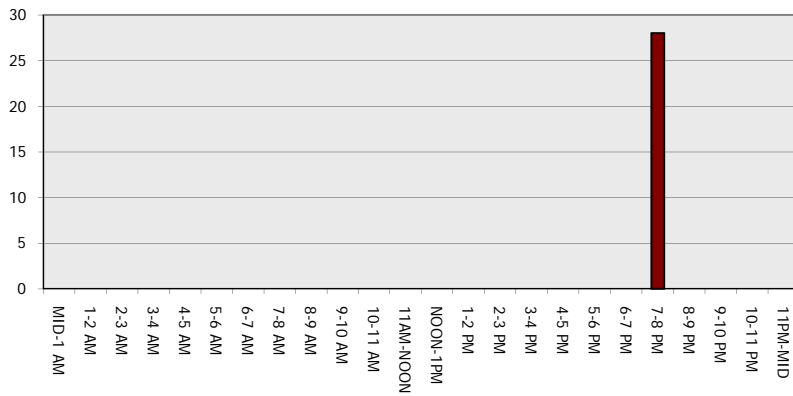
**Main Route - Traffic Demand (Vehicles Per Hour)**



**Main Route Average Delay Per Vehicle (Minutes)**



**Main Route - Average Queue Length (Vehicles)**



**Main Route - Average Speed (MPH)**

