

USH 41: CTH G TO CTH F (BROWN COUNTY) NIGHTTIME CLOSURE NO DIVERSION ROUTE (MAX QUEUE METHOD)	AUGUST
	Analyzed for 2009 Construction Season

SUMMARY OF TRAFFIC MODEL OUTPUT

MON-THUR SOUTHBOUND DIRECTION

TIME OF DAY	FLOWS AND CAPACITY IN VEH/HR						AVERAGE SPEEDS IN MPH				
	MAIN ROUTE		SITE CAPA CITY	FLOW		AV.DEL PER VEH (MINS)	AVERAGE QUEUE (VEH)	MAIN ROUTE		SITE	
	DEMAND FLOW	PCT HEAVY		MAIN ROUTE	'DIVER TED'			WITHOUT WORK ZONE	WITH WORK ZONE		
MID-1 AM	212	0.0	1500	212	0	0.44	0	66.0	52.5	44.6	
1-2 AM	161	0.0	1500	161	0	0.44	0	66.1	52.7	44.8	
2-3 AM	141	0.0	1500	141	0	0.44	0	66.1	52.8	44.9	
3-4 AM	181	0.0	1500	181	0	0.44	0	66.1	52.7	44.8	
4-5 AM	406	0.0	1500	406	0	0.46	0	65.6	51.9	43.8	
5-6 AM	1200	0.0	OFF	1200	0	0.00	0	64.1	64.1	64.1	
6-7 AM	2305	0.0	OFF	2305	0	0.00	0	62.1	62.1	62.1	
7-8 AM	2904	0.0	OFF	2904	0	0.00	0	56.8	56.8	56.8	
8-9 AM	1859	0.0	OFF	1859	0	0.00	0	62.9	62.9	62.9	
9-10 AM	1619	0.0	OFF	1619	0	0.00	0	63.3	63.3	63.3	
10-11 AM	1698	0.0	OFF	1698	0	0.00	0	63.2	63.2	63.2	
11AM-NOON	1818	0.0	OFF	1818	0	0.00	0	63.0	63.0	63.0	
NOON-1PM	1947	0.0	OFF	1947	0	0.00	0	62.8	62.8	62.8	
1-2 PM	2056	0.0	OFF	2056	0	0.00	0	62.5	62.5	62.5	
2-3 PM	2196	0.0	OFF	2196	0	0.00	0	62.3	62.3	62.3	
3-4 PM	2492	0.0	OFF	2492	0	0.00	0	61.0	61.0	61.0	
4-5 PM	2989	0.0	OFF	2989	0	0.00	0	55.9	55.9	55.9	
5-6 PM	2758	0.0	OFF	2758	0	0.00	0	58.2	58.2	58.2	
6-7 PM	1627	0.0	OFF	1627	0	0.00	0	63.3	63.3	63.3	
7-8 PM	1143	0.0	1500	1143	0	0.56	0	64.3	48.8	40.4	
8-9 PM	1045	0.0	1500	1045	0	0.52	0	64.5	49.7	41.5	
9-10 PM	922	0.0	1500	922	0	0.51	0	64.6	50.1	42.0	
10-11 PM	783	0.0	1500	783	0	0.50	0	64.9	50.5	42.5	
11PM-MID	483	0.0	1500	483	0	0.47	0	65.5	51.6	43.6	

"OFF" INDICATES NO ROAD WORK (ALL LANES OPEN TO TRAFFIC)

----- SITE BREAKDOWN DELAYS -----	
BREAKDOWN DURATION (MINS)	0
RANGE OF QUEUE DELAY - MIN (VEH-H) MAX	0.0
AV BREAKDOWNS PER DAY	0.00
AV QUEUE DELAY/DAY (VEH-H)	0.0
AV TOTAL DELAY/DAY (VEH-H)	0.0

----- SITE ACCIDENT DELAYS -----	
BREAKDOWN DURATION (MINS)	0
RANGE OF QUEUE DELAY - MIN (VEH-H) MAX	0
AV BREAKDOWNS PER DAY	0
AV QUEUE DELAY/DAY (VEH-H)	0
AV TOTAL DELAY/DAY (VEH-H)	0

AVERAGE ACCIDENT NUMBERS (PIA/DAY)	
MAIN ROUTE WITHOUT WORKS	0.0106
MAIN ROUTE WITH WORKS	0.0102
'DIVERSION'	0.0000
PIA: Personal Injury Accidents	
IMPACTS ON ROAD USERS	
ROAD USER COSTS PER DAY	\$577
CONGESTED HOURS PER DAY*	0

*Delays Exceeding User-Specified Maximum

**USH 41: CTH G TO CTH F (BROWN COUNTY)
NIGHTTIME CLOSURE
NO DIVERSION ROUTE (MAX QUEUE METHOD)**

AUGUST

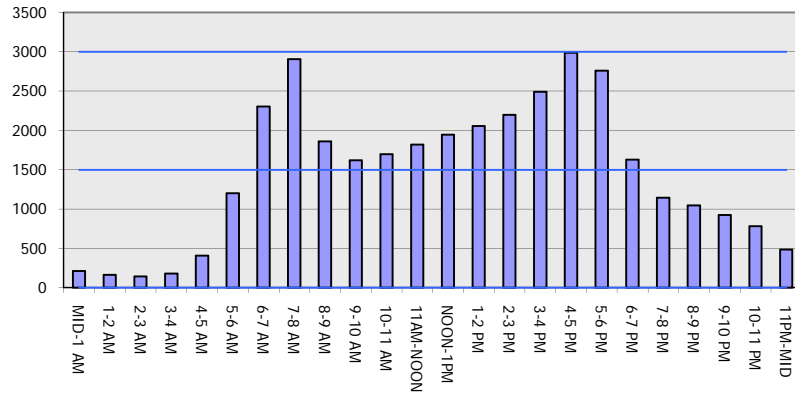
Analyzed for 2009
Construction Season

GRAPHICAL REPRESENTATION OF TRAFFIC MODEL INPUT AND OUTPUT

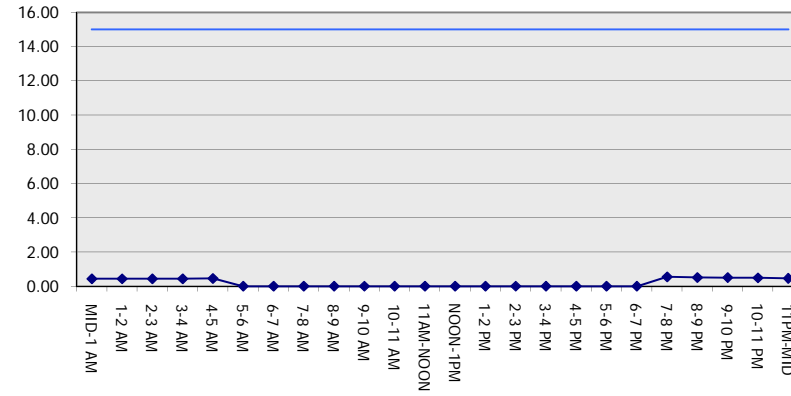
MON-THUR

SOUTHBOUND DIRECTION

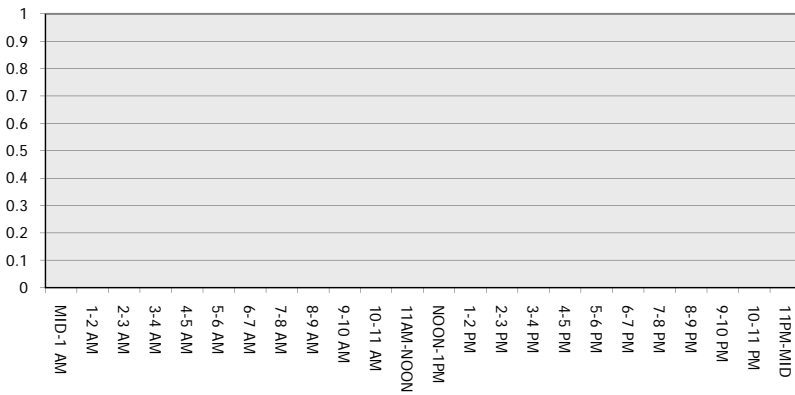
Main Route - Traffic Demand (Vehicles Per Hour)



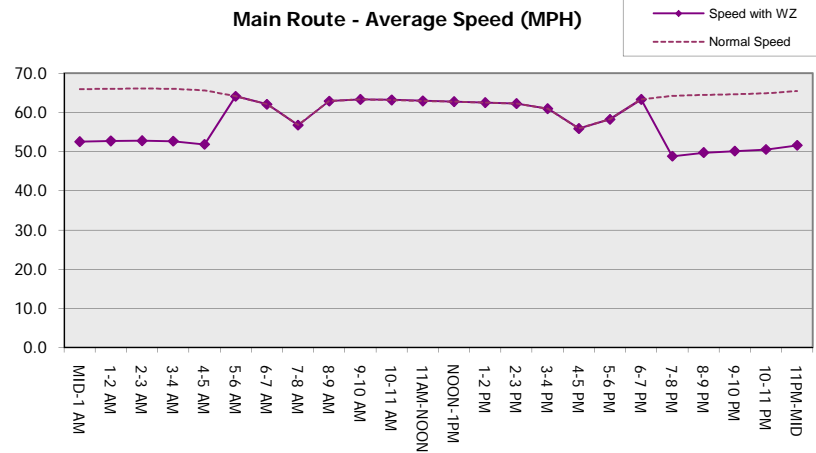
Main Route Average Delay Per Vehicle (Minutes)



Main Route - Average Queue Length (Vehicles)



Main Route - Average Speed (MPH)



USH 41: CTH G TO CTH F (BROWN COUNTY) NIGHTTIME CLOSURE NO DIVERSION ROUTE (MAX QUEUE METHOD)	AUGUST
	Analyzed for 2009 Construction Season

SUMMARY OF TRAFFIC MODEL OUTPUT

MON-THUR NORTHBOUND DIRECTION

TIME OF DAY	FLOWS AND CAPACITY IN VEH/HR							AVERAGE SPEEDS IN MPH		
	MAIN ROUTE		SITE CAPA CITY	FLOW		AV.DEL PER VEH (MINS)	AVERAGE QUEUE (VEH)	MAIN ROUTE		SITE
	DEMAND FLOW	PCT HEAVY		MAIN ROUTE	'DIVER TED'			WITHOUT WORK ZONE	WITH WORK ZONE	
MID-1 AM	204	0.0	1500	204	0	0.44	0	66.0	52.5	44.6
1-2 AM	127	0.0	1500	127	0	0.43	0	66.1	52.8	45.0
2-3 AM	143	0.0	1500	143	0	0.44	0	66.1	52.8	44.9
3-4 AM	145	0.0	1500	145	0	0.44	0	66.1	52.8	44.9
4-5 AM	273	0.0	1500	273	0	0.45	0	65.9	52.3	44.4
5-6 AM	767	0.0	OFF	767	0	0.00	0	65.0	65.0	65.0
6-7 AM	1839	0.0	OFF	1839	0	0.00	0	63.0	63.0	63.0
7-8 AM	2915	0.0	OFF	2915	0	0.00	0	56.6	56.6	56.6
8-9 AM	2124	0.0	OFF	2124	0	0.00	0	62.4	62.4	62.4
9-10 AM	1788	0.0	OFF	1788	0	0.00	0	63.0	63.0	63.0
10-11 AM	1745	0.0	OFF	1745	0	0.00	0	63.2	63.2	63.2
11AM-NOON	1867	0.0	OFF	1867	0	0.00	0	62.9	62.9	62.9
NOON-1PM	1928	0.0	OFF	1928	0	0.00	0	62.8	62.8	62.8
1-2 PM	1940	0.0	OFF	1940	0	0.00	0	62.8	62.8	62.8
2-3 PM	2192	0.0	OFF	2192	0	0.00	0	62.3	62.3	62.3
3-4 PM	2677	0.0	OFF	2677	0	0.00	0	59.1	59.1	59.1
4-5 PM	3243	0.0	OFF	3243	0	0.00	0	53.3	53.3	53.3
5-6 PM	2966	0.0	OFF	2966	0	0.00	0	56.1	56.1	56.1
6-7 PM	1802	0.0	OFF	1802	0	0.00	0	63.0	63.0	63.0
7-8 PM	1155	0.0	1500	1155	0	0.58	0	64.2	48.4	39.9
8-9 PM	979	0.0	1500	979	0	0.52	0	64.6	49.9	41.7
9-10 PM	791	0.0	1500	791	0	0.50	0	64.9	50.5	42.4
10-11 PM	614	0.0	1500	614	0	0.48	0	65.3	51.2	43.1
11PM-MID	364	0.0	1500	364	0	0.46	0	65.7	52.0	44.0

"OFF" INDICATES NO ROAD WORK (ALL LANES OPEN TO TRAFFIC)

----- SITE BREAKDOWN DELAYS -----	
BREAKDOWN DURATION (MINS)	0
RANGE OF QUEUE DELAY - MIN (VEH-H) MAX	0.0
AV BREAKDOWNS PER DAY	0.00
AV QUEUE DELAY/DAY (VEH-H)	0.0
AV TOTAL DELAY/DAY (VEH-H)	0.0

----- SITE ACCIDENT DELAYS -----	
BREAKDOWN DURATION (MINS)	0
RANGE OF QUEUE DELAY - MIN (VEH-H) MAX	0
AV BREAKDOWNS PER DAY	0
AV QUEUE DELAY/DAY (VEH-H)	0
AV TOTAL DELAY/DAY (VEH-H)	0

AVERAGE ACCIDENT NUMBERS (PIA/DAY)	
MAIN ROUTE WITHOUT WORKS	0.0105
MAIN ROUTE WITH WORKS	0.0101
'DIVERSION'	0.0000

PIA: Personal Injury Accidents

ECONOMIC IMPACT ON ROAD USERS	
ROAD USER COSTS PER DAY	\$507
CONGESTED HOURS PER DAY*	0

*Delays Exceeding User-Specified Maximum

**USH 41: CTH G TO CTH F (BROWN COUNTY)
NIGHTTIME CLOSURE
NO DIVERSION ROUTE (MAX QUEUE METHOD)**

AUGUST
Analyzed for 2009
Construction Season

GRAPHICAL REPRESENTATION OF TRAFFIC MODEL INPUT AND OUTPUT
MON-THUR NORTHBOUND DIRECTION

