

<b>USH 41: STH 55 TO CTH F (BROWN COUNTY)</b> <b>NIGHTTIME CLOSURE</b> <b>NO DIVERSION ROUTE (MAX QUEUE METHOD)</b>	<b>OCTOBER</b>
	Analyzed for 2009 Construction Season

**SUMMARY OF TRAFFIC MODEL OUTPUT**

MON-THUR                  SOUTHBOUND DIRECTION

TIME OF DAY	FLOWS AND CAPACITY IN VEH/HR						AVERAGE SPEEDS IN MPH			
	MAIN ROUTE		SITE CAPA CITY	FLOW		AV.DEL PER VEH (MINS)	AVERAGE QUEUE (VEH)	MAIN ROUTE		SITE
	DEMAND FLOW	PCT HEAVY		MAIN ROUTE	'DIVER TED'			WITHOUT WORK ZONE	WITH WORK ZONE	
MID-1 AM	276	0.0	1500	276	0	0.45	0	65.9	63.3	44.4
1-2 AM	118	0.0	1500	118	0	0.43	0	66.1	63.7	45.0
2-3 AM	102	0.0	1500	102	0	0.43	0	66.2	63.7	45.1
3-4 AM	133	0.0	1500	133	0	0.44	0	66.1	63.7	45.0
4-5 AM	313	0.0	1500	313	0	0.45	0	65.8	63.3	44.2
5-6 AM	910	0.0	OFF	910	0	0.00	0	64.7	64.7	64.7
6-7 AM	1691	0.0	OFF	1691	0	0.00	0	63.2	63.2	63.2
7-8 AM	1911	0.0	OFF	1911	0	0.00	0	62.8	62.8	62.8
8-9 AM	1261	0.0	OFF	1261	0	0.00	0	64.0	64.0	64.0
9-10 AM	1186	0.0	OFF	1186	0	0.00	0	64.1	64.1	64.1
10-11 AM	1180	0.0	OFF	1180	0	0.00	0	64.2	64.2	64.2
11AM-NOON	1226	0.0	OFF	1226	0	0.00	0	64.1	64.1	64.1
NOON-1PM	1298	0.0	OFF	1298	0	0.00	0	64.0	64.0	64.0
1-2 PM	1372	0.0	OFF	1372	0	0.00	0	63.8	63.8	63.8
2-3 PM	1568	0.0	OFF	1568	0	0.00	0	63.5	63.5	63.5
3-4 PM	1991	0.0	OFF	1991	0	0.00	0	62.7	62.7	62.7
4-5 PM	2432	0.0	OFF	2432	0	0.00	0	61.6	61.6	61.6
5-6 PM	1874	0.0	OFF	1874	0	0.00	0	62.9	62.9	62.9
6-7 PM	1002	0.0	OFF	1002	0	0.00	0	64.5	64.5	64.5
7-8 PM	716	0.0	1500	716	0	0.49	0	65.1	62.3	42.7
8-9 PM	628	0.0	1500	628	0	0.48	0	65.2	62.5	43.0
9-10 PM	593	0.0	1500	593	0	0.48	0	65.3	62.7	43.2
10-11 PM	347	0.0	1500	347	0	0.46	0	65.8	63.2	44.1
11PM-MID	219	0.0	1500	219	0	0.44	0	66.0	63.5	44.6

"OFF" INDICATES NO ROAD WORK (ALL LANES OPEN TO TRAFFIC)

*----- SITE BREAKDOWN DELAYS -----*	
BREAKDOWN DURATION (MINS)	0
RANGE OF QUEUE DELAY - MIN (VEH-H) MAX	0.0
AV BREAKDOWNS PER DAY	0.00
AV QUEUE DELAY/DAY (VEH-H)	0.0
AV TOTAL DELAY/DAY (VEH-H)	0.0

*----- SITE ACCIDENT DELAYS -----*	
BREAKDOWN DURATION (MINS)	0
RANGE OF QUEUE DELAY - MIN (VEH-H) MAX	0
AV BREAKDOWNS PER DAY	0
AV QUEUE DELAY/DAY (VEH-H)	0
AV TOTAL DELAY/DAY (VEH-H)	0

AVERAGE ACCIDENT NUMBERS (PIA/DAY)	
MAIN ROUTE WITHOUT WORKS	0.0481
MAIN ROUTE WITH WORKS	0.0478
'DIVERSION'	0.0000
<small>PIA: Personal Injury Accidents</small>	
IMPACTS ON ROAD USERS	
ROAD USER COSTS PER DAY	\$329
CONGESTED HOURS PER DAY*	0

\*Delays Exceeding User-Specified Maximum

**USH 41: STH 55 TO CTH F (BROWN COUNTY)  
NIGHTTIME CLOSURE  
NO DIVERSION ROUTE (MAX QUEUE METHOD)**

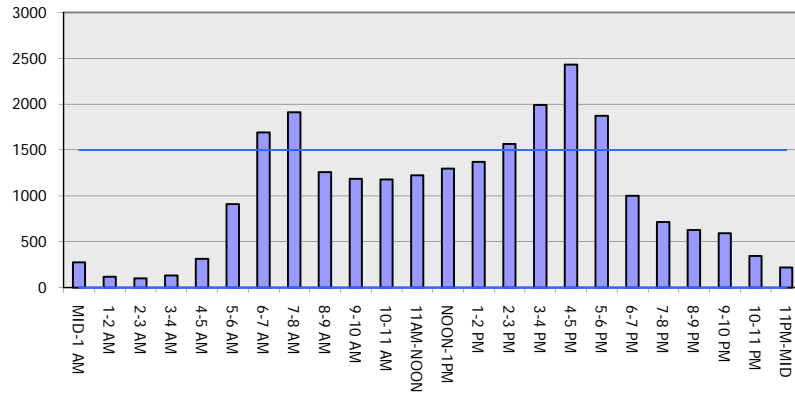
**OCTOBER**

Analyzed for 2009  
Construction Season

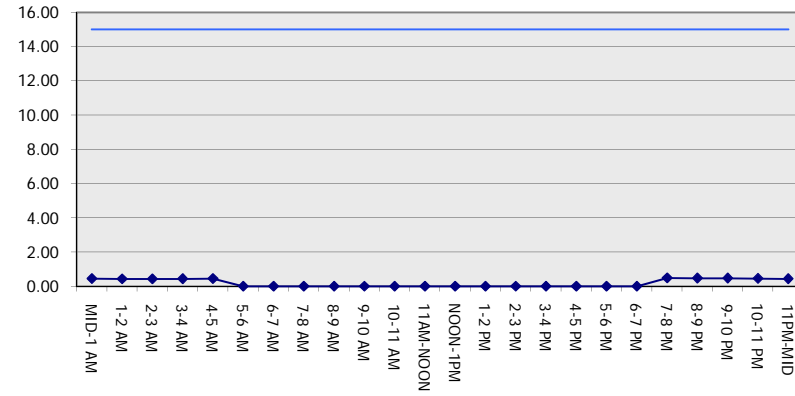
**GRAPHICAL REPRESENTATION OF TRAFFIC MODEL INPUT AND OUTPUT**

**MON-THUR SOUTHBOUND DIRECTION**

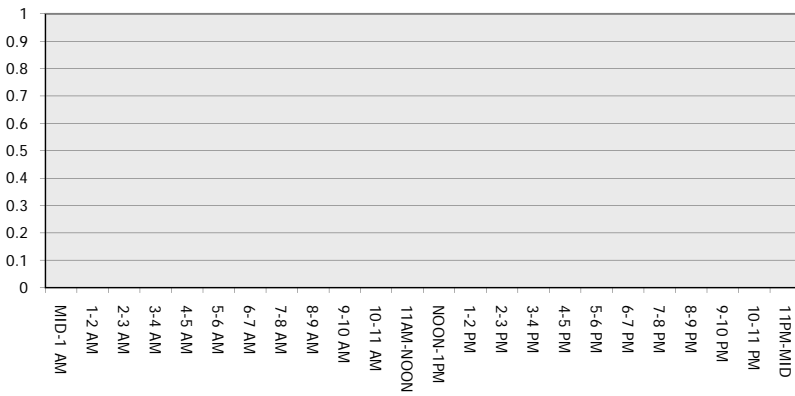
**Main Route - Traffic Demand (Vehicles Per Hour)**



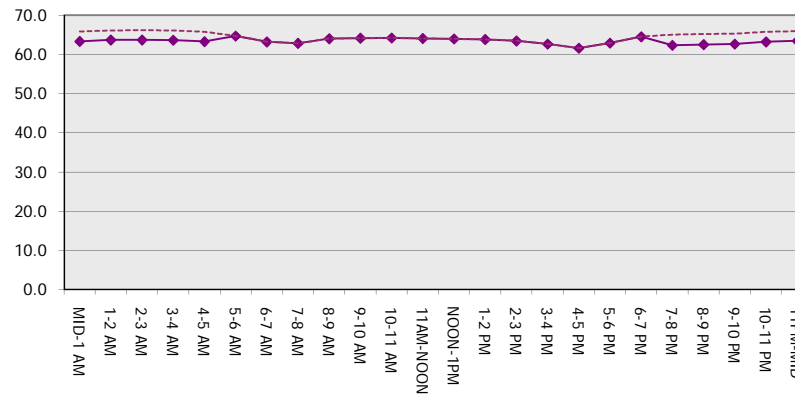
**Main Route Average Delay Per Vehicle (Minutes)**



**Main Route - Average Queue Length (Vehicles)**



**Main Route - Average Speed (MPH)**



<b>USH 41: STH 55 TO CTH F (BROWN COUNTY)                  NIGHTTIME CLOSURE                  NO DIVERSION ROUTE (MAX QUEUE METHOD)</b>	<b>OCTOBER</b>
	Analyzed for 2009 Construction Season

**SUMMARY OF TRAFFIC MODEL OUTPUT**

MON-THUR                      NORTHBOUND DIRECTION

TIME OF DAY	FLOWS AND CAPACITY IN VEH/HR						AVERAGE SPEEDS IN MPH			
	MAIN ROUTE		SITE CAPA CITY	FLOW		AV.DEL PER VEH (MINS)	AVERAGE QUEUE (VEH)	MAIN ROUTE		SITE
	DEMAND FLOW	PCT HEAVY		MAIN ROUTE	'DIVER TED'			WITHOUT WORK ZONE	WITH WORK ZONE	
MID-1 AM	112	0.0	1500	112	0	0.43	0	66.2	63.7	45.0
1-2 AM	94	0.0	1500	94	0	0.43	0	66.2	63.8	45.1
2-3 AM	96	0.0	1500	96	0	0.43	0	66.2	63.8	45.1
3-4 AM	135	0.0	1500	135	0	0.44	0	66.1	63.7	45.0
4-5 AM	288	0.0	1500	288	0	0.45	0	65.8	63.3	44.3
5-6 AM	786	0.0	OFF	786	0	0.00	0	64.9	64.9	64.9
6-7 AM	1822	0.0	OFF	1822	0	0.00	0	63.0	63.0	63.0
7-8 AM	2391	0.0	OFF	2391	0	0.00	0	61.9	61.9	61.9
8-9 AM	1538	0.0	OFF	1538	0	0.00	0	63.5	63.5	63.5
9-10 AM	1268	0.0	OFF	1268	0	0.00	0	64.0	64.0	64.0
10-11 AM	1186	0.0	OFF	1186	0	0.00	0	64.1	64.1	64.1
11AM-NOON	1208	0.0	OFF	1208	0	0.00	0	64.1	64.1	64.1
NOON-1PM	1219	0.0	OFF	1219	0	0.00	0	64.1	64.1	64.1
1-2 PM	1278	0.0	OFF	1278	0	0.00	0	64.0	64.0	64.0
2-3 PM	1431	0.0	OFF	1431	0	0.00	0	63.7	63.7	63.7
3-4 PM	1757	0.0	OFF	1757	0	0.00	0	63.1	63.1	63.1
4-5 PM	2111	0.0	OFF	2111	0	0.00	0	62.5	62.5	62.5
5-6 PM	1804	0.0	OFF	1804	0	0.00	0	63.0	63.0	63.0
6-7 PM	1030	0.0	OFF	1030	0	0.00	0	64.5	64.5	64.5
7-8 PM	706	0.0	1500	706	0	0.49	0	65.1	62.4	42.7
8-9 PM	597	0.0	1500	597	0	0.48	0	65.3	62.7	43.2
9-10 PM	491	0.0	1500	491	0	0.47	0	65.5	62.8	43.5
10-11 PM	313	0.0	1500	313	0	0.45	0	65.8	63.3	44.2
11PM-MID	156	0.0	1500	156	0	0.44	0	66.1	63.6	44.8

"OFF" INDICATES NO ROAD WORK (ALL LANES OPEN TO TRAFFIC)

*----- SITE BREAKDOWN DELAYS -----*	
BREAKDOWN DURATION (MINS)	0
RANGE OF QUEUE DELAY - MIN (VEH-H) MAX	0.0
AV BREAKDOWNS PER DAY	0.00
AV QUEUE DELAY/DAY (VEH-H)	0.0
AV TOTAL DELAY/DAY (VEH-H)	0.0

*----- SITE ACCIDENT DELAYS -----*	
BREAKDOWN DURATION (MINS)	0
RANGE OF QUEUE DELAY - MIN (VEH-H) MAX	0
AV BREAKDOWNS PER DAY	0
AV QUEUE DELAY/DAY (VEH-H)	0
AV TOTAL DELAY/DAY (VEH-H)	0

AVERAGE ACCIDENT NUMBERS (PIA/DAY)	
MAIN ROUTE WITHOUT WORKS	0.0470
MAIN ROUTE WITH WORKS	0.0468
'DIVERSION'	0.0000

PIA: Personal Injury Accidents

ECONOMIC IMPACT ON ROAD USERS	
ROAD USER COSTS PER DAY	\$284
CONGESTED HOURS PER DAY*	0

\*Delays Exceeding User-Specified Maximum

**USH 41: STH 55 TO CTH F (BROWN COUNTY)  
NIGHTTIME CLOSURE  
NO DIVERSION ROUTE (MAX QUEUE METHOD)**

**OCTOBER**

Analyzed for 2009  
Construction Season

**GRAPHICAL REPRESENTATION OF TRAFFIC MODEL INPUT AND OUTPUT**  
**MON-THUR NORTHBOUND DIRECTION**

