

USH 41: STH 55 TO CTH F (BROWN COUNTY) NIGHTTIME CLOSURE NO DIVERSION ROUTE (MAX QUEUE METHOD)	OCTOBER
	Analyzed for 2009 Construction Season

SUMMARY OF TRAFFIC MODEL OUTPUT

FRIDAY SOUTHBOUND DIRECTION

TIME OF DAY	FLOWS AND CAPACITY IN VEH/HR						AVERAGE SPEEDS IN MPH			
	MAIN ROUTE		SITE CAPA CITY	FLOW		AV.DEL PER VEH (MINS)	AVERAGE QUEUE (VEH)	MAIN ROUTE		SITE
	DEMAND FLOW	PCT HEAVY		MAIN ROUTE	'DIVER TED'			WITHOUT WORK ZONE	WITH WORK ZONE	
MID-1 AM	166	0.0	1500	166	0	0.44	0	66.1	63.6	44.8
1-2 AM	135	0.0	1500	135	0	0.44	0	66.1	63.7	45.0
2-3 AM	120	0.0	1500	120	0	0.43	0	66.1	63.7	45.0
3-4 AM	122	0.0	1500	122	0	0.43	0	66.1	63.7	45.0
4-5 AM	246	0.0	1500	246	0	0.45	0	66.0	63.4	44.5
5-6 AM	661	0.0	OFF	661	0	0.00	0	65.1	65.1	65.1
6-7 AM	1347	0.0	OFF	1347	0	0.00	0	63.9	63.9	63.9
7-8 AM	1883	0.0	OFF	1883	0	0.00	0	62.9	62.9	62.9
8-9 AM	1238	0.0	OFF	1238	0	0.00	0	64.1	64.1	64.1
9-10 AM	1262	0.0	OFF	1262	0	0.00	0	64.0	64.0	64.0
10-11 AM	1334	0.0	OFF	1334	0	0.00	0	63.9	63.9	63.9
11AM-NOON	1495	0.0	OFF	1495	0	0.00	0	63.6	63.6	63.6
NOON-1PM	1599	0.0	OFF	1599	0	0.00	0	63.4	63.4	63.4
1-2 PM	1646	0.0	OFF	1646	0	0.00	0	63.3	63.3	63.3
2-3 PM	1867	0.0	OFF	1867	0	0.00	0	62.9	62.9	62.9
3-4 PM	2140	0.0	OFF	2140	0	0.00	0	62.4	62.4	62.4
4-5 PM	2431	0.0	OFF	2431	0	0.00	0	61.6	61.6	61.6
5-6 PM	2153	0.0	OFF	2153	0	0.00	0	62.3	62.3	62.3
6-7 PM	1323	0.0	OFF	1323	0	0.00	0	63.9	63.9	63.9
7-8 PM	867	0.0	1500	867	0	0.51	0	64.8	62.0	42.2
8-9 PM	760	0.0	1500	760	0	0.50	0	65.0	62.3	42.5
9-10 PM	728	0.0	1500	728	0	0.49	0	65.0	62.3	42.7
10-11 PM	636	0.0	1500	636	0	0.48	0	65.2	62.5	43.0
11PM-MID	398	0.0	1500	398	0	0.46	0	65.6	63.1	43.9

"OFF" INDICATES NO ROAD WORK (ALL LANES OPEN TO TRAFFIC)

----- SITE BREAKDOWN DELAYS -----	
BREAKDOWN DURATION (MINS)	0
RANGE OF QUEUE DELAY - MIN (VEH-H) MAX	0.0
AV BREAKDOWNS PER DAY	0.00
AV QUEUE DELAY/DAY (VEH-H)	0.0
AV TOTAL DELAY/DAY (VEH-H)	0.0

----- SITE ACCIDENT DELAYS -----	
BREAKDOWN DURATION (MINS)	0
RANGE OF QUEUE DELAY - MIN (VEH-H) MAX	0
AV BREAKDOWNS PER DAY	0
AV QUEUE DELAY/DAY (VEH-H)	0
AV TOTAL DELAY/DAY (VEH-H)	0

AVERAGE ACCIDENT NUMBERS (PIA/DAY)	
MAIN ROUTE WITHOUT WORKS	0.0524
MAIN ROUTE WITH WORKS	0.0521
'DIVERSION'	0.0000
PIA: Personal Injury Accidents	
IMPACTS ON ROAD USERS	
ROAD USER COSTS PER DAY	\$433
CONGESTED HOURS PER DAY*	0

*Delays Exceeding User-Specified Maximum

**USH 41: STH 55 TO CTH F (BROWN COUNTY)
NIGHTTIME CLOSURE
NO DIVERSION ROUTE (MAX QUEUE METHOD)**

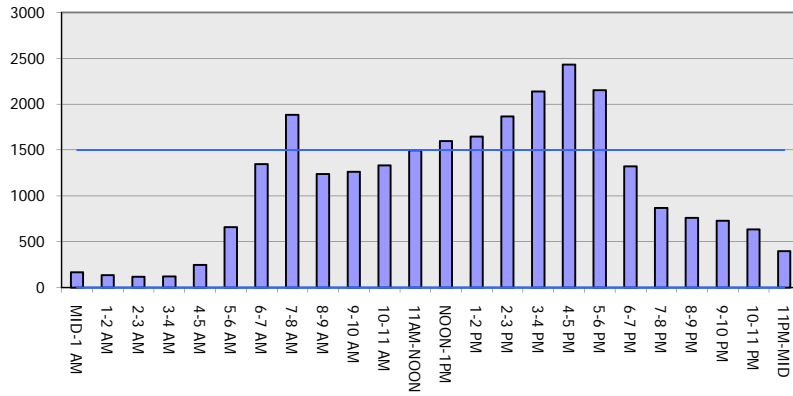
OCTOBER

Analyzed for 2009
Construction Season

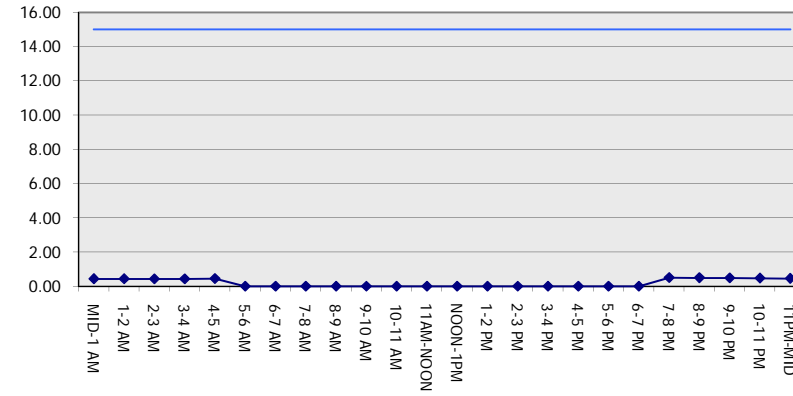
GRAPHICAL REPRESENTATION OF TRAFFIC MODEL INPUT AND OUTPUT

FRIDAY SOUTHBOUND DIRECTION

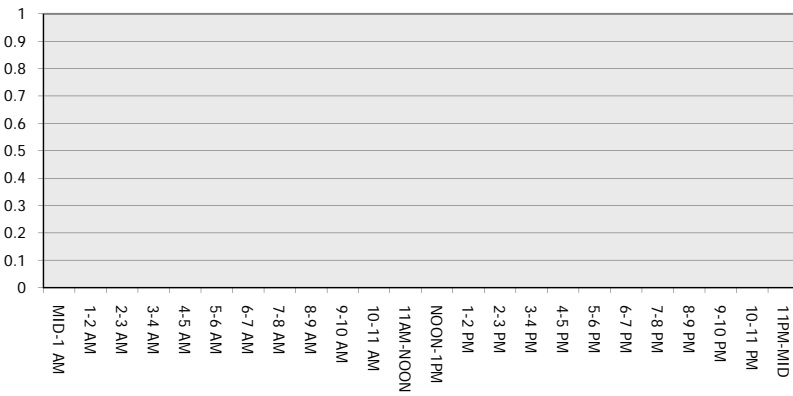
Main Route - Traffic Demand (Vehicles Per Hour)



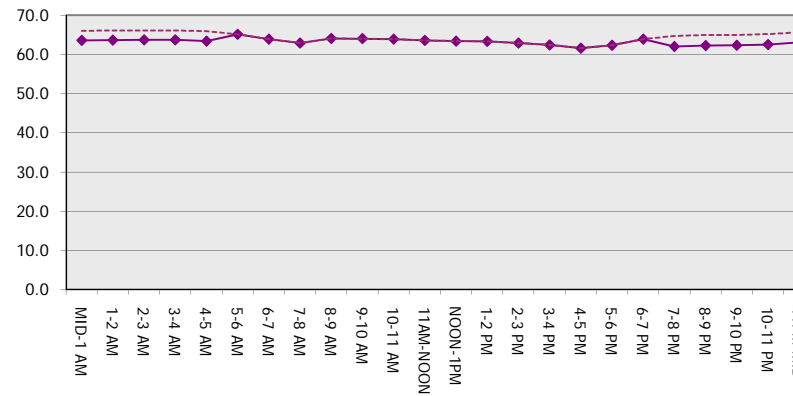
Main Route Average Delay Per Vehicle (Minutes)



Main Route - Average Queue Length (Vehicles)



Main Route - Average Speed (MPH)



USH 41: STH 55 TO CTH F (BROWN COUNTY) NIGHTTIME CLOSURE NO DIVERSION ROUTE (MAX QUEUE METHOD)	OCTOBER
	Analyzed for 2009 Construction Season

SUMMARY OF TRAFFIC MODEL OUTPUT

FRIDAY NORTHBOUND DIRECTION

TIME OF DAY	FLOWS AND CAPACITY IN VEH/HR						AVERAGE SPEEDS IN MPH			
	MAIN ROUTE		SITE CAPA CITY	FLOW		AV.DEL PER VEH (MINS)	AVERAGE QUEUE (VEH)	MAIN ROUTE		SITE
	DEMAND FLOW	PCT HEAVY		MAIN ROUTE	'DIVER TED'			WITHOUT WORK ZONE	WITH WORK ZONE	
MID-1 AM	148	0.0	1500	148	0	0.44	0	66.1	63.7	44.9
1-2 AM	112	0.0	1500	112	0	0.43	0	66.2	63.7	45.0
2-3 AM	131	0.0	1500	131	0	0.44	0	66.1	63.7	45.0
3-4 AM	131	0.0	1500	131	0	0.44	0	66.1	63.7	45.0
4-5 AM	246	0.0	1500	246	0	0.45	0	66.0	63.4	44.5
5-6 AM	595	0.0	OFF	595	0	0.00	0	65.3	65.3	65.3
6-7 AM	1472	0.0	OFF	1472	0	0.00	0	63.7	63.7	63.7
7-8 AM	2315	0.0	OFF	2315	0	0.00	0	62.1	62.1	62.1
8-9 AM	1647	0.0	OFF	1647	0	0.00	0	63.3	63.3	63.3
9-10 AM	1371	0.0	OFF	1371	0	0.00	0	63.8	63.8	63.8
10-11 AM	1462	0.0	OFF	1462	0	0.00	0	63.7	63.7	63.7
11AM-NOON	1494	0.0	OFF	1494	0	0.00	0	63.6	63.6	63.6
NOON-1PM	1603	0.0	OFF	1603	0	0.00	0	63.4	63.4	63.4
1-2 PM	1660	0.0	OFF	1660	0	0.00	0	63.3	63.3	63.3
2-3 PM	1876	0.0	OFF	1876	0	0.00	0	62.9	62.9	62.9
3-4 PM	2130	0.0	OFF	2130	0	0.00	0	62.4	62.4	62.4
4-5 PM	2491	0.0	OFF	2491	0	0.00	0	61.0	61.0	61.0
5-6 PM	2392	0.0	OFF	2392	0	0.00	0	61.9	61.9	61.9
6-7 PM	1754	0.0	OFF	1754	0	0.00	0	63.1	63.1	63.1
7-8 PM	1171	0.0	1500	1171	0	0.60	0	64.2	61.0	39.4
8-9 PM	948	0.0	1500	948	0	0.51	0	64.6	61.9	41.9
9-10 PM	784	0.0	1500	784	0	0.50	0	64.9	62.2	42.5
10-11 PM	549	0.0	1500	549	0	0.48	0	65.4	62.7	43.3
11PM-MID	362	0.0	1500	362	0	0.46	0	65.7	63.2	44.0

"OFF" INDICATES NO ROAD WORK (ALL LANES OPEN TO TRAFFIC)

----- SITE BREAKDOWN DELAYS -----	
BREAKDOWN DURATION (MINS)	0
RANGE OF QUEUE DELAY - MIN (VEH-H) MAX	0.0
AV BREAKDOWNS PER DAY	0.00
AV QUEUE DELAY/DAY (VEH-H)	0.0
AV TOTAL DELAY/DAY (VEH-H)	0.0

----- SITE ACCIDENT DELAYS -----	
BREAKDOWN DURATION (MINS)	0
RANGE OF QUEUE DELAY - MIN (VEH-H) MAX	0
AV BREAKDOWNS PER DAY	0
AV QUEUE DELAY/DAY (VEH-H)	0
AV TOTAL DELAY/DAY (VEH-H)	0

AVERAGE ACCIDENT NUMBERS (PIA/DAY)	
MAIN ROUTE WITHOUT WORKS	0.0569
MAIN ROUTE WITH WORKS	0.0566
'DIVERSION'	0.0000

PIA: Personal Injury Accidents

ECONOMIC IMPACT ON ROAD USERS	
ROAD USER COSTS PER DAY	\$505
CONGESTED HOURS PER DAY*	0

*Delays Exceeding User-Specified Maximum

**USH 41: STH 55 TO CTH F (BROWN COUNTY)
NIGHTTIME CLOSURE
NO DIVERSION ROUTE (MAX QUEUE METHOD)**

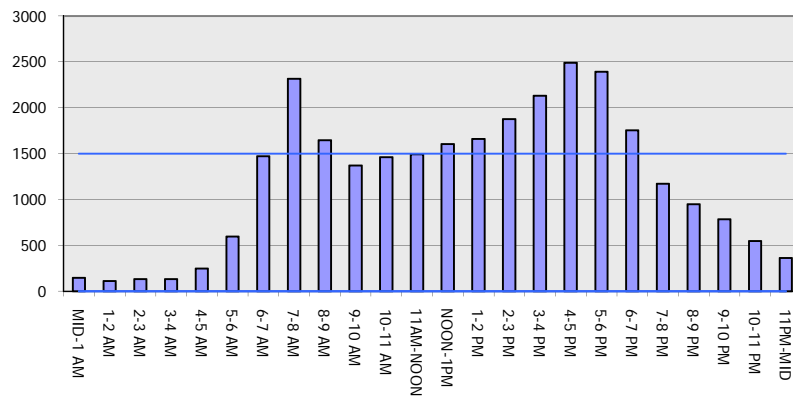
OCTOBER

Analyzed for 2009
Construction Season

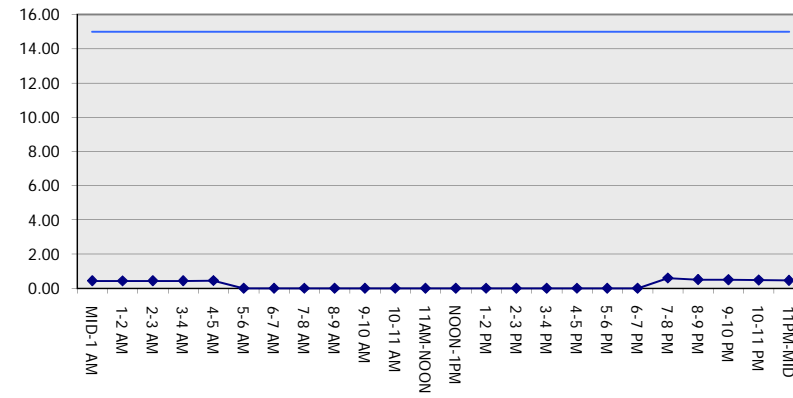
GRAPHICAL REPRESENTATION OF TRAFFIC MODEL INPUT AND OUTPUT

FRIDAY NORTHBOUND DIRECTION

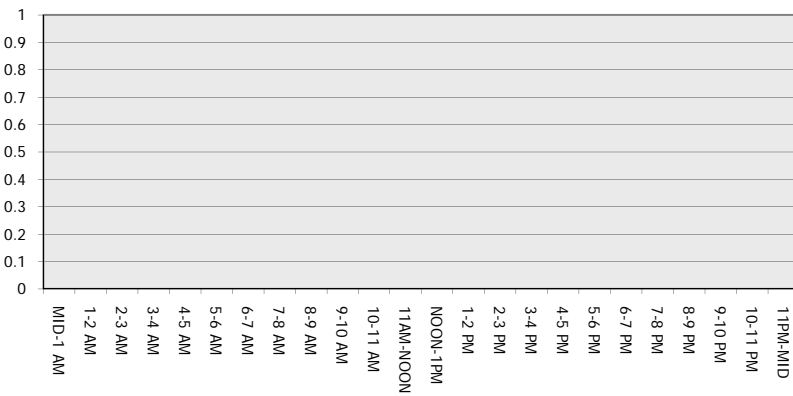
Main Route - Traffic Demand (Vehicles Per Hour)



Main Route Average Delay Per Vehicle (Minutes)



Main Route - Average Queue Length (Vehicles)



Main Route - Average Speed (MPH)

