

<b>USH 41: STH 125 TO USH 10 (WINNEBAGO AND OUTAGAMIE COUNTIES)</b> <b>OFF-PEAK DAY 2 LANE CLOSURE</b> <b>NO DIVERSION ROUTE (MAX QUEUE METHOD)</b>	<b>OCTOBER</b>
	Analyzed for 2009 Construction Season

**SUMMARY OF TRAFFIC MODEL OUTPUT**

MON-THUR      SOUTHBOUND DIRECTION

TIME OF DAY	FLOWS AND CAPACITY IN VEH/HR						AVERAGE SPEEDS IN MPH			
	MAIN ROUTE		SITE CAPA CITY	FLOW		AV.DEL PER VEH (MINS)	AVERAGE QUEUE (VEH)	MAIN ROUTE		SITE
	DEMAND FLOW	PCT HEAVY		MAIN ROUTE	'DIVER TED'			WITHOUT WORK ZONE	WITH WORK ZONE	
MID-1 AM	376	0.0	OFF	376	0	0.00	0	70.2	70.2	70.2
1-2 AM	211	0.0	OFF	211	0	0.00	0	70.2	70.2	70.2
2-3 AM	161	0.0	OFF	161	0	0.00	0	70.2	70.2	70.2
3-4 AM	198	0.0	OFF	198	0	0.00	0	70.2	70.2	70.2
4-5 AM	413	0.0	OFF	413	0	0.00	0	70.2	70.2	70.2
5-6 AM	1214	0.0	OFF	1214	0	0.00	0	69.2	69.2	69.2
6-7 AM	2240	0.0	OFF	2240	0	0.00	0	67.9	67.9	67.9
7-8 AM	3479	0.0	OFF	3479	0	0.00	0	66.4	66.4	66.4
8-9 AM	2527	0.0	OFF	2527	0	0.00	0	67.6	67.6	67.6
9-10 AM	1991	0.0	OFF	1991	0	0.00	0	68.2	68.2	68.2
10-11 AM	2073	0.0	1499	1926	147	9.11+	251	68.2	15.7	30.8
11AM-NOON	2345	0.0	1500	1500	845	16.33+	400	67.8	9.7	30.8
NOON-1PM	2561	0.0	1500	1500	1061	16.32+	400	67.6	9.7	30.8
1-2 PM	2794	0.0	1500	1500	1294	16.31+	400	67.3	9.7	30.8
2-3 PM	3090	0.0	1500	1500	1590	16.30+	400	66.9	9.7	30.8
3-4 PM	3251	0.0	OFF	3251	0	0.37	33	66.7	58.9	58.9
4-5 PM	3824	0.0	OFF	3824	0	0.00	0	64.7	64.7	64.7
5-6 PM	3502	0.0	OFF	3502	0	0.00	0	66.4	66.4	66.4
6-7 PM	2304	0.0	OFF	2304	0	0.00	0	67.9	67.9	67.9
7-8 PM	1770	0.0	OFF	1770	0	0.00	0	68.6	68.6	68.6
8-9 PM	1607	0.0	OFF	1607	0	0.00	0	68.7	68.7	68.7
9-10 PM	1311	0.0	OFF	1311	0	0.00	0	69.1	69.1	69.1
10-11 PM	802	0.0	OFF	802	0	0.00	0	69.7	69.7	69.7
11PM-MID	447	0.0	OFF	447	0	0.00	0	70.2	70.2	70.2

"OFF" INDICATES NO ROAD WORK (ALL LANES OPEN TO TRAFFIC)

+ INDICATES QUEUEING EXCEEDS USER-SPECIFIED MAXIMUM LIMIT

*----- SITE BREAKDOWN DELAYS -----*	
BREAKDOWN DURATION (MINS)	0
RANGE OF QUEUE DELAY - MIN (VEH-H) MAX	0.0
AV BREAKDOWNS PER DAY	0.00
AV QUEUE DELAY/DAY (VEH-H)	0.0
AV TOTAL DELAY/DAY (VEH-H)	0.0

*----- SITE ACCIDENT DELAYS -----*	
BREAKDOWN DURATION (MINS)	0
RANGE OF QUEUE DELAY - MIN (VEH-H) MAX	0
AV BREAKDOWNS PER DAY	0
AV QUEUE DELAY/DAY (VEH-H)	0
AV TOTAL DELAY/DAY (VEH-H)	0

AVERAGE ACCIDENT NUMBERS (PIA/DAY)	
MAIN ROUTE WITHOUT WORKS	0.0220
MAIN ROUTE WITH WORKS	0.0190
'DIVERSION'	0.0056
PIA: Personal Injury Accidents	
IMPACTS ON ROAD USERS	
ROAD USER COSTS PER DAY	\$43,165
CONGESTED HOURS PER DAY*	5

\*Delays Exceeding User-Specified Maximum

**USH 41: STH 125 TO USH 10 (WINNEBAGO AND OUTAGAMIE COUNTIES)**  
**OFF-PEAK DAY 2 LANE CLOSURE**  
**NO DIVERSION ROUTE (MAX QUEUE METHOD)**

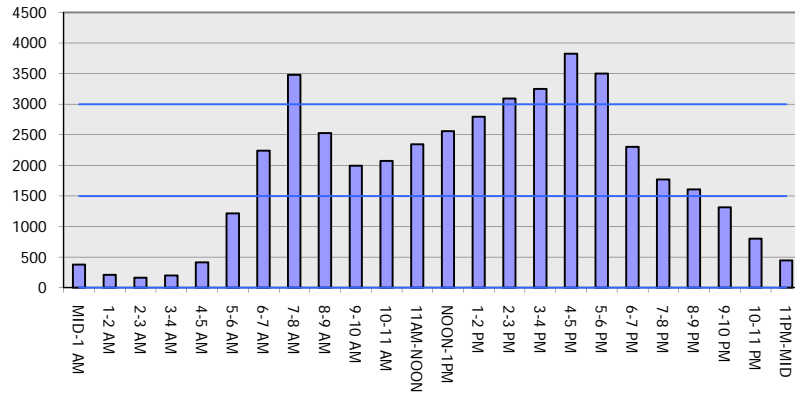
**OCTOBER**

Analyzed for 2009  
 Construction Season

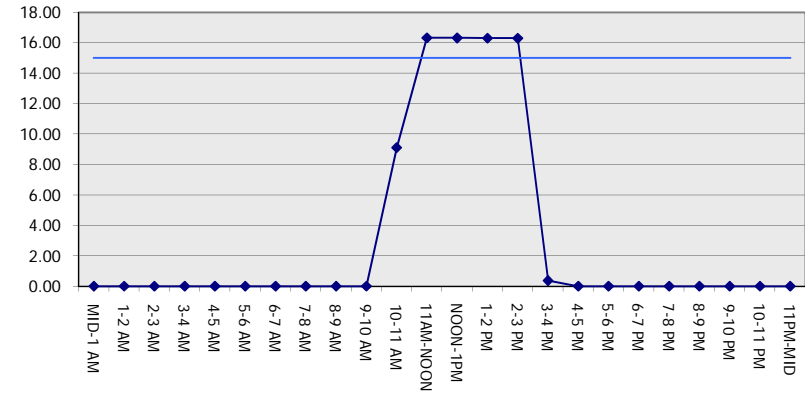
**GRAPHICAL REPRESENTATION OF TRAFFIC MODEL INPUT AND OUTPUT**

**MON-THUR SOUTHBOUND DIRECTION**

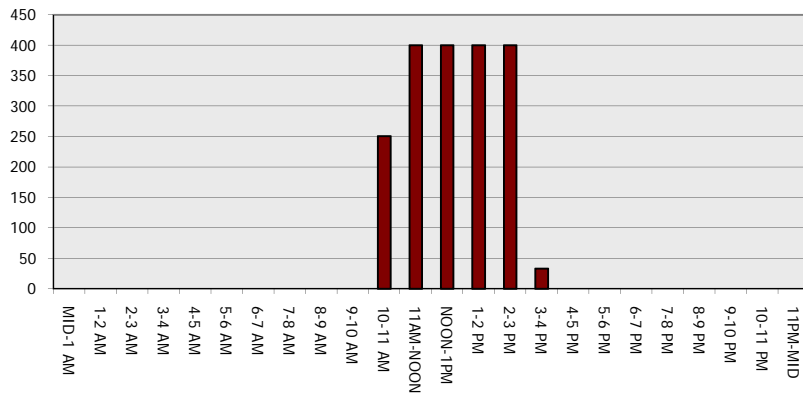
**Main Route - Traffic Demand (Vehicles Per Hour)**



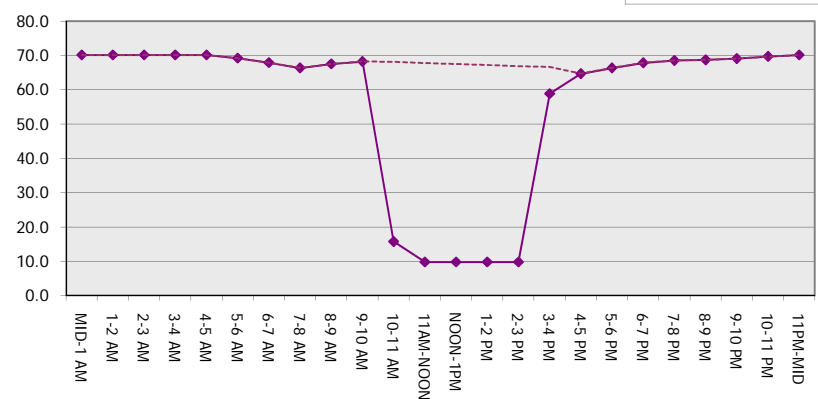
**Main Route Average Delay Per Vehicle (Minutes)**



**Main Route - Average Queue Length (Vehicles)**



**Main Route - Average Speed (MPH)**



<b>USH 41: STH 125 TO USH 10 (WINNEBAGO AND OUTAGAMIE COUNTIES)</b> <b>OFF-PEAK DAY 2 LANE CLOSURE</b> <b>NO DIVERSION ROUTE (MAX QUEUE METHOD)</b>	<b>OCTOBER</b>
	Analyzed for 2009 Construction Season

**SUMMARY OF TRAFFIC MODEL OUTPUT**

MON-THUR                      NORTHBOUND DIRECTION

TIME OF DAY	FLOWS AND CAPACITY IN VEH/HR						AVERAGE SPEEDS IN MPH			
	MAIN ROUTE		SITE CAPA CITY	FLOW		AV.DEL PER VEH (MINS)	AVERAGE QUEUE (VEH)	MAIN ROUTE		SITE
	DEMAND FLOW	PCT HEAVY		MAIN ROUTE	'DIVER TED'			WITHOUT WORK ZONE	WITH WORK ZONE	
MID-1 AM	204	0.0	OFF	204	0	0.00	0	70.2	70.2	70.2
1-2 AM	160	0.0	OFF	160	0	0.00	0	70.2	70.2	70.2
2-3 AM	138	0.0	OFF	138	0	0.00	0	70.2	70.2	70.2
3-4 AM	172	0.0	OFF	172	0	0.00	0	70.2	70.2	70.2
4-5 AM	367	0.0	OFF	367	0	0.00	0	70.2	70.2	70.2
5-6 AM	1067	0.0	OFF	1067	0	0.00	0	69.4	69.4	69.4
6-7 AM	2046	0.0	OFF	2046	0	0.00	0	68.2	68.2	68.2
7-8 AM	3420	0.0	OFF	3420	0	0.00	0	66.5	66.5	66.5
8-9 AM	2702	0.0	OFF	2702	0	0.00	0	67.4	67.4	67.4
9-10 AM	2253	0.0	OFF	2253	0	0.00	0	67.9	67.9	67.9
10-11 AM	2283	0.0	1499	1875	408	11.19+	293	67.9	13.4	30.8
11AM-NOON	2521	0.0	1500	1500	1021	16.33+	400	67.6	9.7	30.8
NOON-1PM	2537	0.0	1500	1500	1037	16.33+	400	67.6	9.7	30.8
1-2 PM	2515	0.0	1500	1500	1015	16.33+	400	67.6	9.7	30.8
2-3 PM	2731	0.0	1500	1500	1231	16.32+	400	67.3	9.7	30.8
3-4 PM	3392	0.0	OFF	3392	0	0.33	26	66.5	59.5	59.5
4-5 PM	3984	0.0	OFF	3984	0	0.00	0	63.7	63.7	63.7
5-6 PM	3581	0.0	OFF	3581	0	0.00	0	66.3	66.3	66.3
6-7 PM	2269	0.0	OFF	2269	0	0.00	0	67.9	67.9	67.9
7-8 PM	1340	0.0	OFF	1340	0	0.00	0	69.1	69.1	69.1
8-9 PM	1024	0.0	OFF	1024	0	0.00	0	69.5	69.5	69.5
9-10 PM	813	0.0	OFF	813	0	0.00	0	69.7	69.7	69.7
10-11 PM	634	0.0	OFF	634	0	0.00	0	69.9	69.9	69.9
11PM-MID	392	0.0	OFF	392	0	0.00	0	70.2	70.2	70.2

"OFF" INDICATES NO ROAD WORK (ALL LANES OPEN TO TRAFFIC)

+ INDICATES QUEUEING EXCEEDS USER-SPECIFIED MAXIMUM LIMIT

*----- SITE BREAKDOWN DELAYS -----*	
BREAKDOWN DURATION (MINS)	0
RANGE OF QUEUE DELAY - MIN (VEH-H) MAX	0.0
AV BREAKDOWNS PER DAY	0.00
AV QUEUE DELAY/DAY (VEH-H)	0.0
AV TOTAL DELAY/DAY (VEH-H)	0.0

*----- SITE ACCIDENT DELAYS -----*	
BREAKDOWN DURATION (MINS)	0
RANGE OF QUEUE DELAY - MIN (VEH-H) MAX	0
AV BREAKDOWNS PER DAY	0
AV QUEUE DELAY/DAY (VEH-H)	0
AV TOTAL DELAY/DAY (VEH-H)	0

AVERAGE ACCIDENT NUMBERS (PIA/DAY)	
MAIN ROUTE WITHOUT WORKS	0.0210
MAIN ROUTE WITH WORKS	0.0181
'DIVERSION'	0.0054

PIA: Personal Injury Accidents

ECONOMIC IMPACT ON ROAD USERS	
ROAD USER COSTS PER DAY	\$42,899
CONGESTED HOURS PER DAY*	5

\*Delays Exceeding User-Specified Maximum

**USH 41: STH 125 TO USH 10 (WINNEBAGO AND OUTAGAMIE COUNTIES)**  
**OFF-PEAK DAY 2 LANE CLOSURE**  
**NO DIVERSION ROUTE (MAX QUEUE METHOD)**

**OCTOBER**

Analyzed for 2009  
 Construction Season

**GRAPHICAL REPRESENTATION OF TRAFFIC MODEL INPUT AND OUTPUT**

**MON-THUR NORTHBOUND DIRECTION**

