

STH 441: RACINE ST TO USH 10 (CALUMET AND OUTAGAMIE COUNTIES) OFF-PEAK DAY CLOSURE NO DIVERSION ROUTE (MAX QUEUE METHOD)	OCTOBER
	Analyzed for 2009 Construction Season

SUMMARY OF TRAFFIC MODEL OUTPUT

FRIDAY WESTBOUND DIRECTION

TIME OF DAY	FLOWS AND CAPACITY IN VEH/HR						AVERAGE SPEEDS IN MPH				
	MAIN ROUTE		SITE CAPA CITY	FLOW		AV.DEL PER VEH (MINS)	AVERAGE QUEUE (VEH)	MAIN ROUTE		SITE	
	DEMAND FLOW	PCT HEAVY		MAIN ROUTE	'DIVER TED'			WITHOUT WORK ZONE	WITH WORK ZONE		
MID-1 AM	118	0.0	OFF	118	0	0.00	0	66.1	66.1	66.1	
1-2 AM	94	0.0	OFF	94	0	0.00	0	66.2	66.2	66.2	
2-3 AM	92	0.0	OFF	92	0	0.00	0	66.2	66.2	66.2	
3-4 AM	94	0.0	OFF	94	0	0.00	0	66.2	66.2	66.2	
4-5 AM	334	0.0	OFF	334	0	0.00	0	65.8	65.8	65.8	
5-6 AM	844	0.0	OFF	844	0	0.00	0	64.8	64.8	64.8	
6-7 AM	1653	0.0	OFF	1653	0	0.00	0	63.3	63.3	63.3	
7-8 AM	2546	0.0	OFF	2546	0	0.00	0	60.4	60.4	60.4	
8-9 AM	1670	0.0	OFF	1670	0	0.00	0	63.3	63.3	63.3	
9-10 AM	1215	0.0	OFF	1215	0	0.00	0	64.1	64.1	64.1	
10-11 AM	1243	0.0	1500	1243	0	0.69	0	64.1	50.7	37.1	
11AM-NOON	1392	0.0	1499	1392	0	0.88	0	63.8	47.8	33.2	
NOON-1PM	1527	0.0	1499	1527	0	1.26	6	63.5	43.1	30.8	
1-2 PM	1613	0.0	1500	1613	0	3.76	78	63.4	26.2	30.8	
2-3 PM	1677	0.0	1500	1677	0	8.80	217	63.3	14.7	30.8	
3-4 PM	1967	0.0	OFF	1967	0	0.40	24	62.7	54.6	54.6	
4-5 PM	2046	0.0	OFF	2046	0	0.00	0	62.6	62.6	62.6	
5-6 PM	1887	0.0	OFF	1887	0	0.00	0	62.8	62.8	62.8	
6-7 PM	1336	0.0	OFF	1336	0	0.00	0	63.9	63.9	63.9	
7-8 PM	859	0.0	OFF	859	0	0.00	0	64.8	64.8	64.8	
8-9 PM	640	0.0	OFF	640	0	0.00	0	65.2	65.2	65.2	
9-10 PM	695	0.0	OFF	695	0	0.00	0	65.1	65.1	65.1	
10-11 PM	535	0.0	OFF	535	0	0.00	0	65.4	65.4	65.4	
11PM-MID	379	0.0	OFF	379	0	0.00	0	65.7	65.7	65.7	

"OFF" INDICATES NO ROAD WORK (ALL LANES OPEN TO TRAFFIC)

----- SITE BREAKDOWN DELAYS -----	
BREAKDOWN DURATION (MINS)	0
RANGE OF QUEUE DELAY - MIN (VEH-H) MAX	0.0
AV BREAKDOWNS PER DAY	0.00
AV QUEUE DELAY/DAY (VEH-H)	0.0
AV TOTAL DELAY/DAY (VEH-H)	0.0

----- SITE ACCIDENT DELAYS -----	
BREAKDOWN DURATION (MINS)	0
RANGE OF QUEUE DELAY - MIN (VEH-H) MAX	0
AV BREAKDOWNS PER DAY	0
AV QUEUE DELAY/DAY (VEH-H)	0
AV TOTAL DELAY/DAY (VEH-H)	0

AVERAGE ACCIDENT NUMBERS (PIA/DAY)	
MAIN ROUTE WITHOUT WORKS	0.0118
MAIN ROUTE WITH WORKS	0.0113
'DIVERSION'	0.0000
PIA: Personal Injury Accidents	
IMPACTS ON ROAD USERS	
ROAD USER COSTS PER DAY	\$5,289
CONGESTED HOURS PER DAY*	0

*Delays Exceeding User-Specified Maximum

STH 441: RACINE ST TO USH 10 (CALUMET AND OUTAGAMIE COUNTIES)
OFF-PEAK DAY CLOSURE
NO DIVERSION ROUTE (MAX QUEUE METHOD)

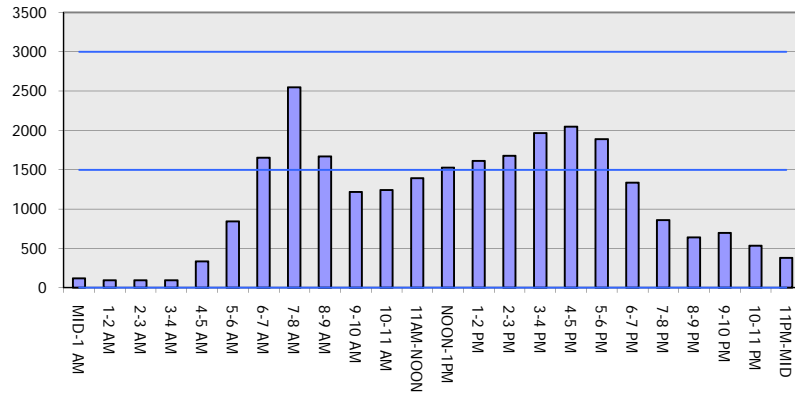
OCTOBER

Analyzed for 2009
 Construction Season

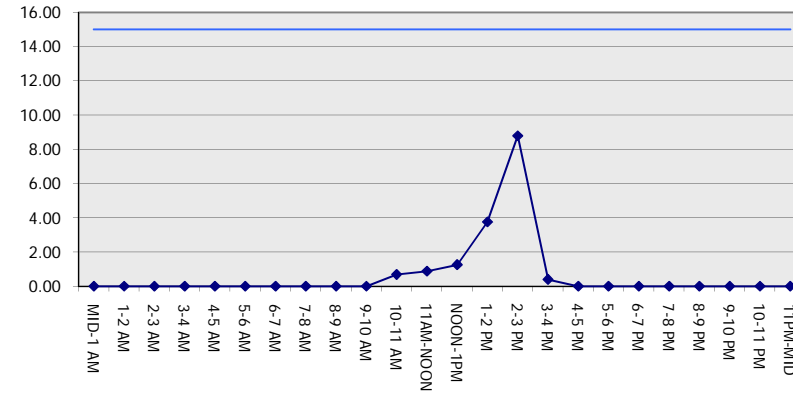
GRAPHICAL REPRESENTATION OF TRAFFIC MODEL INPUT AND OUTPUT

FRIDAY WESTBOUND DIRECTION

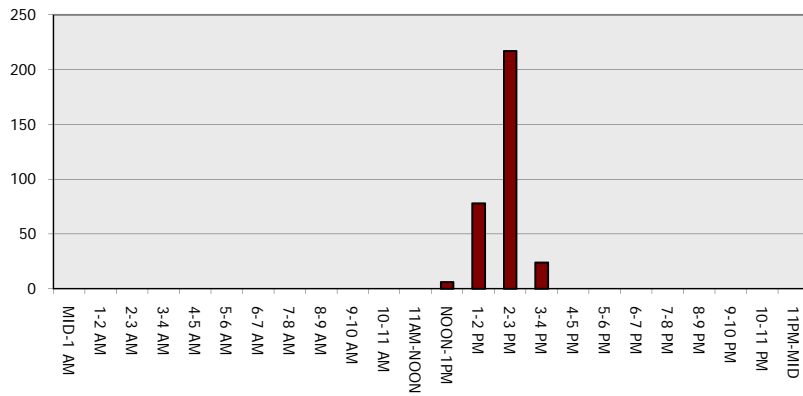
Main Route - Traffic Demand (Vehicles Per Hour)



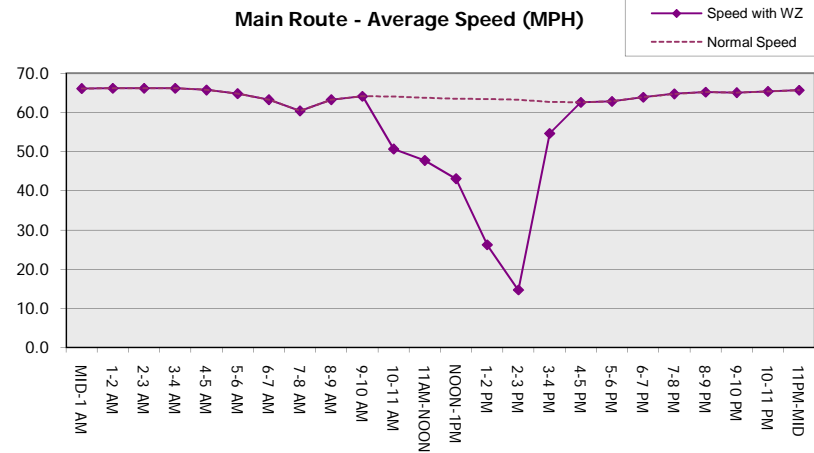
Main Route Average Delay Per Vehicle (Minutes)



Main Route - Average Queue Length (Vehicles)



Main Route - Average Speed (MPH)



STH 441: RACINE ST TO USH 10 (CALUMET AND OUTAGAMIE COUNTIES) OFF-PEAK DAY CLOSURE NO DIVERSION ROUTE (MAX QUEUE METHOD)	OCTOBER
	Analyzed for 2009 Construction Season

SUMMARY OF TRAFFIC MODEL OUTPUT

FRIDAY EASTBOUND DIRECTION

TIME OF DAY	FLOWS AND CAPACITY IN VEH/HR						AVERAGE SPEEDS IN MPH			
	MAIN ROUTE		SITE CAPA CITY	FLOW		AV.DEL PER VEH (MINS)	AVERAGE QUEUE (VEH)	MAIN ROUTE		SITE
	DEMAND FLOW	PCT HEAVY		MAIN ROUTE	'DIVER TED'			WITHOUT WORK ZONE	WITH WORK ZONE	
MID-1 AM	261	0.0	OFF	261	0	0.00	0	65.9	65.9	65.9
1-2 AM	171	0.0	OFF	171	0	0.00	0	66.1	66.1	66.1
2-3 AM	137	0.0	OFF	137	0	0.00	0	66.1	66.1	66.1
3-4 AM	78	0.0	OFF	78	0	0.00	0	66.3	66.3	66.3
4-5 AM	153	0.0	OFF	153	0	0.00	0	66.1	66.1	66.1
5-6 AM	525	0.0	OFF	525	0	0.00	0	65.4	65.4	65.4
6-7 AM	1347	0.0	OFF	1347	0	0.00	0	63.9	63.9	63.9
7-8 AM	2128	0.0	OFF	2128	0	0.00	0	62.4	62.4	62.4
8-9 AM	1648	0.0	OFF	1648	0	0.00	0	63.3	63.3	63.3
9-10 AM	1338	0.0	OFF	1338	0	0.00	0	63.9	63.9	63.9
10-11 AM	1453	0.0	1499	1453	0	0.96	0	63.7	46.6	31.8
11AM-NOON	1688	0.0	1499	1688	0	3.66	83	63.2	26.6	30.8
NOON-1PM	1779	0.0	1500	1759	20	12.41+	318	63.1	11.6	30.8
1-2 PM	1897	0.0	1500	1495	402	16.31+	413	62.8	9.9	30.8
2-3 PM	2414	0.0	1499	1495	919	16.30+	414	61.8	9.9	30.8
3-4 PM	2812	0.0	OFF	2812	0	1.46	80	57.7	38.4	38.4
4-5 PM	3213	0.0	OFF	3213	0	0.00	0	53.6	53.6	53.6
5-6 PM	2776	0.0	OFF	2776	0	0.00	0	58.1	58.1	58.1
6-7 PM	1955	0.0	OFF	1955	0	0.00	0	62.7	62.7	62.7
7-8 PM	1246	0.0	OFF	1246	0	0.00	0	64.1	64.1	64.1
8-9 PM	1042	0.0	OFF	1042	0	0.00	0	64.5	64.5	64.5
9-10 PM	930	0.0	OFF	930	0	0.00	0	64.6	64.6	64.6
10-11 PM	842	0.0	OFF	842	0	0.00	0	64.8	64.8	64.8
11PM-MID	559	0.0	OFF	559	0	0.00	0	65.3	65.3	65.3

"OFF" INDICATES NO ROAD WORK (ALL LANES OPEN TO TRAFFIC)

+ INDICATES QUEUEING EXCEEDS USER-SPECIFIED MAXIMUM LIMIT

----- SITE BREAKDOWN DELAYS -----	
BREAKDOWN DURATION (MINS)	0
RANGE OF QUEUE DELAY - MIN (VEH-H) MAX	0.0
AV BREAKDOWNS PER DAY	0.00
AV QUEUE DELAY/DAY (VEH-H)	0.0
AV TOTAL DELAY/DAY (VEH-H)	0.0

----- SITE ACCIDENT DELAYS -----	
BREAKDOWN DURATION (MINS)	0
RANGE OF QUEUE DELAY - MIN (VEH-H) MAX	0
AV BREAKDOWNS PER DAY	0
AV QUEUE DELAY/DAY (VEH-H)	0
AV TOTAL DELAY/DAY (VEH-H)	0

AVERAGE ACCIDENT NUMBERS (PIA/DAY)	
MAIN ROUTE WITHOUT WORKS	0.0144
MAIN ROUTE WITH WORKS	0.0133
'DIVERSION'	0.0014

PIA: Personal Injury Accidents

ECONOMIC IMPACT ON ROAD USERS	
ROAD USER COSTS PER DAY	\$21,483
CONGESTED HOURS PER DAY*	3

*Delays Exceeding User-Specified Maximum

STH 441: RACINE ST TO USH 10 (CALUMET AND OUTAGAMIE COUNTIES)
OFF-PEAK DAY CLOSURE
NO DIVERSION ROUTE (MAX QUEUE METHOD)

OCTOBER

Analyzed for 2009
 Construction Season

GRAPHICAL REPRESENTATION OF TRAFFIC MODEL INPUT AND OUTPUT

FRIDAY EASTBOUND DIRECTION

