

USH 41: STH 44 TO STH 26 (WINNEBAGO COUNTY) OFF-PEAK DAY CLOSURE NO DIVERSION ROUTE (MAX QUEUE METHOD)	OCTOBER
	Analyzed for 2009 Construction Season

SUMMARY OF TRAFFIC MODEL OUTPUT

SATURDAY SOUTHBOUND DIRECTION

TIME OF DAY	FLOWS AND CAPACITY IN VEH/HR						AVERAGE SPEEDS IN MPH				
	MAIN ROUTE		SITE CAPA CITY	FLOW		AV.DEL PER VEH (MINS)	AVERAGE QUEUE (VEH)	MAIN ROUTE		SITE	
	DEMAND FLOW	PCT HEAVY		MAIN ROUTE	'DIVER TED'			WITHOUT WORK ZONE	WITH WORK ZONE		
MID-1 AM	202	0.0	OFF	202	0	0.00	0	66.0	66.0	66.0	
1-2 AM	139	0.0	OFF	139	0	0.00	0	66.1	66.1	66.1	
2-3 AM	126	0.0	OFF	126	0	0.00	0	66.1	66.1	66.1	
3-4 AM	116	0.0	OFF	116	0	0.00	0	66.2	66.2	66.2	
4-5 AM	187	0.0	OFF	187	0	0.00	0	66.0	66.0	66.0	
5-6 AM	327	0.0	OFF	327	0	0.00	0	65.8	65.8	65.8	
6-7 AM	609	0.0	OFF	609	0	0.00	0	65.3	65.3	65.3	
7-8 AM	1055	0.0	OFF	1055	0	0.00	0	64.4	64.4	64.4	
8-9 AM	1256	0.0	1500	1256	0	0.71	0	64.0	50.1	36.8	
9-10 AM	1427	0.0	1499	1427	0	0.93	0	63.7	46.7	32.4	
10-11 AM	1583	0.0	1499	1583	0	2.28	37	63.5	33.5	30.8	
11AM-NOON	1569	0.0	1499	1569	0	5.32	117	63.5	20.6	30.8	
NOON-1PM	1594	0.0	1500	1594	0	8.40	201	63.4	14.8	30.8	
1-2 PM	1497	0.0	1499	1497	0	10.19	247	63.6	12.7	30.8	
2-3 PM	1504	0.0	1500	1504	0	10.10	244	63.6	12.8	30.8	
3-4 PM	1493	0.0	1499	1493	0	10.05	243	63.6	12.9	30.8	
4-5 PM	1497	0.0	1500	1497	0	9.98	241	63.6	12.9	30.8	
5-6 PM	1381	0.0	1499	1381	0	7.78	186	63.8	15.7	30.8	
6-7 PM	1195	0.0	OFF	1195	0	0.05	2	64.1	63.0	63.0	
7-8 PM	983	0.0	OFF	983	0	0.00	0	64.6	64.6	64.6	
8-9 PM	813	0.0	OFF	813	0	0.00	0	64.9	64.9	64.9	
9-10 PM	702	0.0	OFF	702	0	0.00	0	65.1	65.1	65.1	
10-11 PM	559	0.0	OFF	559	0	0.00	0	65.3	65.3	65.3	
11PM-MID	364	0.0	OFF	364	0	0.00	0	65.7	65.7	65.7	

"OFF" INDICATES NO ROAD WORK (ALL LANES OPEN TO TRAFFIC)

----- SITE BREAKDOWN DELAYS -----	
BREAKDOWN DURATION (MINS)	0
RANGE OF QUEUE DELAY - MIN (VEH-H) MAX	0.0
AV BREAKDOWNS PER DAY	0.00
AV QUEUE DELAY/DAY (VEH-H)	0.0
AV TOTAL DELAY/DAY (VEH-H)	0.0

----- SITE ACCIDENT DELAYS -----	
BREAKDOWN DURATION (MINS)	0
RANGE OF QUEUE DELAY - MIN (VEH-H) MAX	0
AV BREAKDOWNS PER DAY	0
AV QUEUE DELAY/DAY (VEH-H)	0
AV TOTAL DELAY/DAY (VEH-H)	0

AVERAGE ACCIDENT NUMBERS (PIA/DAY)	
MAIN ROUTE WITHOUT WORKS	0.0095
MAIN ROUTE WITH WORKS	0.0086
'DIVERSION'	0.0000
PIA: Personal Injury Accidents	
IMPACTS ON ROAD USERS	
ROAD USER COSTS PER DAY	\$26,966
CONGESTED HOURS PER DAY*	0

*Delays Exceeding User-Specified Maximum

**USH 41: STH 44 TO STH 26 (WINNEBAGO COUNTY)
OFF-PEAK DAY CLOSURE
NO DIVERSION ROUTE (MAX QUEUE METHOD)**

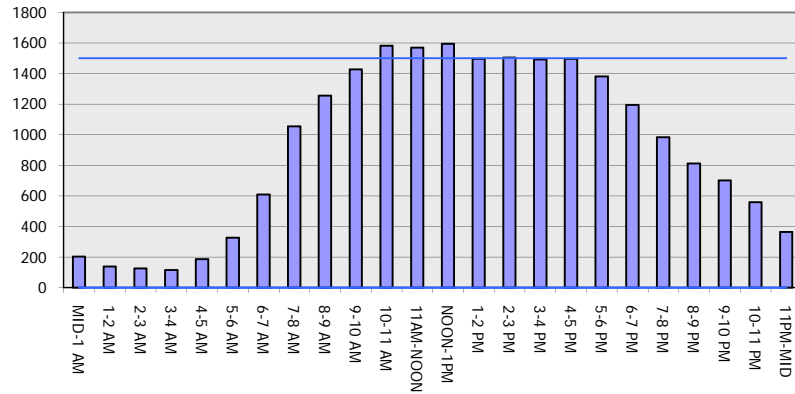
OCTOBER

Analyzed for 2009
Construction Season

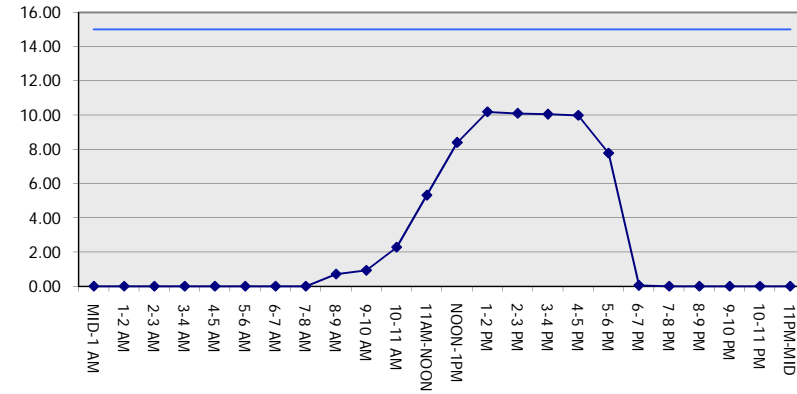
GRAPHICAL REPRESENTATION OF TRAFFIC MODEL INPUT AND OUTPUT

SATURDAY SOUTHBOUND DIRECTION

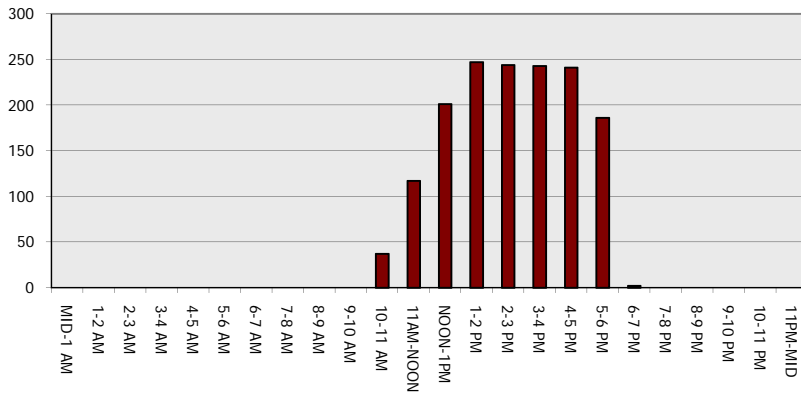
Main Route - Traffic Demand (Vehicles Per Hour)



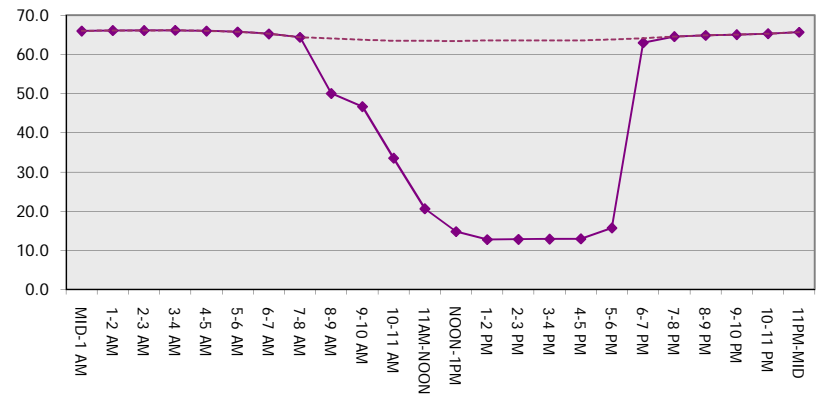
Main Route Average Delay Per Vehicle (Minutes)



Main Route - Average Queue Length (Vehicles)



Main Route - Average Speed (MPH)



USH 41: STH 44 TO STH 26 (WINNEBAGO COUNTY) OFF-PEAK DAY CLOSURE NO DIVERSION ROUTE (MAX QUEUE METHOD)	OCTOBER
	Analyzed for 2009 Construction Season

SUMMARY OF TRAFFIC MODEL OUTPUT

SATURDAY NORTHBOUND DIRECTION

TIME OF DAY	FLOWS AND CAPACITY IN VEH/HR						AVERAGE SPEEDS IN MPH			
	MAIN ROUTE		SITE CAPA CITY	FLOW		AV.DEL PER VEH (MINS)	AVERAGE QUEUE (VEH)	MAIN ROUTE		SITE
	DEMAND FLOW	PCT HEAVY		MAIN ROUTE	'DIVER TED'			WITHOUT WORK ZONE	WITH WORK ZONE	
MID-1 AM	235	0.0	OFF	235	0	0.00	0	66.0	66.0	66.0
1-2 AM	147	0.0	OFF	147	0	0.00	0	66.1	66.1	66.1
2-3 AM	125	0.0	OFF	125	0	0.00	0	66.1	66.1	66.1
3-4 AM	117	0.0	OFF	117	0	0.00	0	66.1	66.1	66.1
4-5 AM	154	0.0	OFF	154	0	0.00	0	66.1	66.1	66.1
5-6 AM	319	0.0	OFF	319	0	0.00	0	65.8	65.8	65.8
6-7 AM	444	0.0	OFF	444	0	0.00	0	65.6	65.6	65.6
7-8 AM	728	0.0	OFF	728	0	0.00	0	65.0	65.0	65.0
8-9 AM	973	0.0	1500	973	0	0.52	0	64.6	53.5	41.8
9-10 AM	1298	0.0	1499	1298	0	0.76	0	64.0	49.2	35.7
10-11 AM	1596	0.0	1499	1596	0	2.17	35	63.4	34.3	30.8
11AM-NOON	1691	0.0	1500	1691	0	7.71	189	63.2	15.8	30.8
NOON-1PM	1644	0.0	1499	1644	0	14.34+	361	63.3	10.4	30.8
1-2 PM	1608	0.0	1499	1493	115	16.37+	414	63.4	9.7	30.8
2-3 PM	1535	0.0	1499	1490	45	16.36+	413	63.5	9.7	30.8
3-4 PM	1548	0.0	1500	1500	48	16.40+	414	63.5	9.7	30.8
4-5 PM	1551	0.0	1500	1500	51	16.40+	414	63.5	9.7	30.8
5-6 PM	1490	0.0	1500	1476	13	16.18+	408	63.6	9.8	30.8
6-7 PM	1252	0.0	OFF	1252	0	0.45	27	64.0	54.5	54.5
7-8 PM	1010	0.0	OFF	1010	0	0.00	0	64.5	64.5	64.5
8-9 PM	835	0.0	OFF	835	0	0.00	0	64.8	64.8	64.8
9-10 PM	686	0.0	OFF	686	0	0.00	0	65.1	65.1	65.1
10-11 PM	479	0.0	OFF	479	0	0.00	0	65.5	65.5	65.5
11PM-MID	330	0.0	OFF	330	0	0.00	0	65.8	65.8	65.8

"OFF" INDICATES NO ROAD WORK (ALL LANES OPEN TO TRAFFIC)

+ INDICATES QUEUEING EXCEEDS USER-SPECIFIED MAXIMUM LIMIT

----- SITE BREAKDOWN DELAYS -----	
BREAKDOWN DURATION (MINS)	0
RANGE OF QUEUE DELAY - MIN (VEH-H) MAX	0.0
AV BREAKDOWNS PER DAY	0.00
AV QUEUE DELAY/DAY (VEH-H)	0.0
AV TOTAL DELAY/DAY (VEH-H)	0.0

----- SITE ACCIDENT DELAYS -----	
BREAKDOWN DURATION (MINS)	0
RANGE OF QUEUE DELAY - MIN (VEH-H) MAX	0
AV BREAKDOWNS PER DAY	0
AV QUEUE DELAY/DAY (VEH-H)	0
AV TOTAL DELAY/DAY (VEH-H)	0

AVERAGE ACCIDENT NUMBERS (PIA/DAY)	
MAIN ROUTE WITHOUT WORKS	0.0094
MAIN ROUTE WITH WORKS	0.0083
'DIVERSION'	0.0003

PIA: Personal Injury Accidents

ECONOMIC IMPACT ON ROAD USERS	
ROAD USER COSTS PER DAY	\$46,008
CONGESTED HOURS PER DAY*	6

*Delays Exceeding User-Specified Maximum

**USH 41: STH 44 TO STH 26 (WINNEBAGO COUNTY)
OFF-PEAK DAY CLOSURE
NO DIVERSION ROUTE (MAX QUEUE METHOD)**

OCTOBER

Analyzed for 2009
Construction Season

**GRAPHICAL REPRESENTATION OF TRAFFIC MODEL INPUT AND OUTPUT
SATURDAY NORTHBOUND DIRECTION**

