

<b>USH 41: STH 114 TO BREEZEWOOD LN/BELL ST (WINNEBAGO COUNTY)</b> <b>OFF-PEAK DAY 2 LANE CLOSURE</b> <b>NO DIVERSION ROUTE (MAX QUEUE METHOD)</b>	<b>OCTOBER</b>
	Analyzed for 2009 Construction Season

**SUMMARY OF TRAFFIC MODEL OUTPUT**

SUNDAY SOUTHBOUND DIRECTION

TIME OF DAY	FLOWS AND CAPACITY IN VEH/HR						AVERAGE SPEEDS IN MPH			
	MAIN ROUTE		SITE CAPA CITY	FLOW		AV.DEL PER VEH (MINS)	AVERAGE QUEUE (VEH)	MAIN ROUTE		SITE
	DEMAND FLOW	PCT HEAVY		MAIN ROUTE	'DIVER TED'			WITHOUT WORK ZONE	WITH WORK ZONE	
MID-1 AM	470	0.0	OFF	470	0	0.00	0	70.2	70.2	70.2
1-2 AM	268	0.0	OFF	268	0	0.00	0	70.2	70.2	70.2
2-3 AM	245	0.0	OFF	245	0	0.00	0	70.2	70.2	70.2
3-4 AM	221	0.0	OFF	221	0	0.00	0	70.2	70.2	70.2
4-5 AM	199	0.0	OFF	199	0	0.00	0	70.2	70.2	70.2
5-6 AM	239	0.0	OFF	239	0	0.00	0	70.2	70.2	70.2
6-7 AM	369	0.0	OFF	369	0	0.00	0	70.2	70.2	70.2
7-8 AM	529	0.0	OFF	529	0	0.00	0	70.0	70.0	70.0
8-9 AM	809	0.0	OFF	809	0	0.00	0	69.7	69.7	69.7
9-10 AM	1301	0.0	1499	1301	0	0.83	0	69.1	41.1	35.8
10-11 AM	1748	0.0	1499	1748	0	3.90	96	68.6	17.0	30.8
11AM-NOON	2168	0.0	1500	1729	439	16.31+	402	68.1	6.8	30.8
NOON-1PM	2316	0.0	1499	1491	825	17.29+	424	67.9	6.5	30.8
1-2 PM	2450	0.0	1499	1487	963	17.33+	425	67.7	6.5	30.8
2-3 PM	2694	0.0	1499	1480	1214	17.42+	428	67.4	6.5	30.8
3-4 PM	2946	0.0	1499	1498	1448	17.60+	433	67.1	6.5	30.8
4-5 PM	3088	0.0	1499	1502	1586	17.73+	436	66.9	6.5	30.8
5-6 PM	2818	0.0	1500	1494	1323	17.48+	430	67.3	6.5	30.8
6-7 PM	2519	0.0	1499	1497	1022	17.31+	425	67.6	6.5	30.8
7-8 PM	1737	0.0	OFF	1737	0	0.22	21	68.6	57.9	57.9
8-9 PM	1142	0.0	OFF	1142	0	0.00	0	69.3	69.3	69.3
9-10 PM	765	0.0	OFF	765	0	0.00	0	69.8	69.8	69.8
10-11 PM	524	0.0	OFF	524	0	0.00	0	70.1	70.1	70.1
11PM-MID	303	0.0	OFF	303	0	0.00	0	70.2	70.2	70.2

"OFF" INDICATES NO ROAD WORK (ALL LANES OPEN TO TRAFFIC)

+ INDICATES QUEUEING EXCEEDS USER-SPECIFIED MAXIMUM LIMIT

*----- SITE BREAKDOWN DELAYS -----*	
BREAKDOWN DURATION (MINS)	0
RANGE OF QUEUE DELAY - MIN (VEH-H) MAX	0.0
AV BREAKDOWNS PER DAY	0.00
AV QUEUE DELAY/DAY (VEH-H)	0.0
AV TOTAL DELAY/DAY (VEH-H)	0.0

*----- SITE ACCIDENT DELAYS -----*	
BREAKDOWN DURATION (MINS)	0
RANGE OF QUEUE DELAY - MIN (VEH-H) MAX	0
AV BREAKDOWNS PER DAY	0
AV QUEUE DELAY/DAY (VEH-H)	0
AV TOTAL DELAY/DAY (VEH-H)	0

AVERAGE ACCIDENT NUMBERS (PIA/DAY)	
MAIN ROUTE WITHOUT WORKS	0.0071
MAIN ROUTE WITH WORKS	0.0041
'DIVERSION'	0.0045
PIA: Personal Injury Accidents	
IMPACTS ON ROAD USERS	
ROAD USER COSTS PER DAY	\$103,352
CONGESTED HOURS PER DAY*	8

\*Delays Exceeding User-Specified Maximum

**USH 41: STH 114 TO BREEZEWOOD LN/BELL ST (WINNEBAGO COUNTY)**  
**OFF-PEAK DAY 2 LANE CLOSURE**  
**NO DIVERSION ROUTE (MAX QUEUE METHOD)**

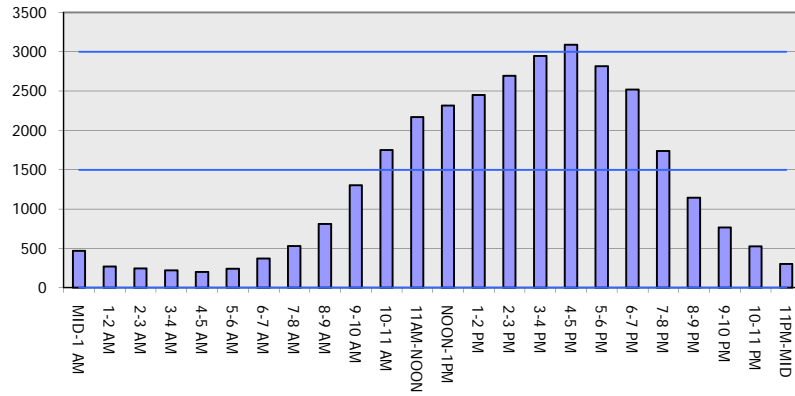
**OCTOBER**

Analyzed for 2009  
 Construction Season

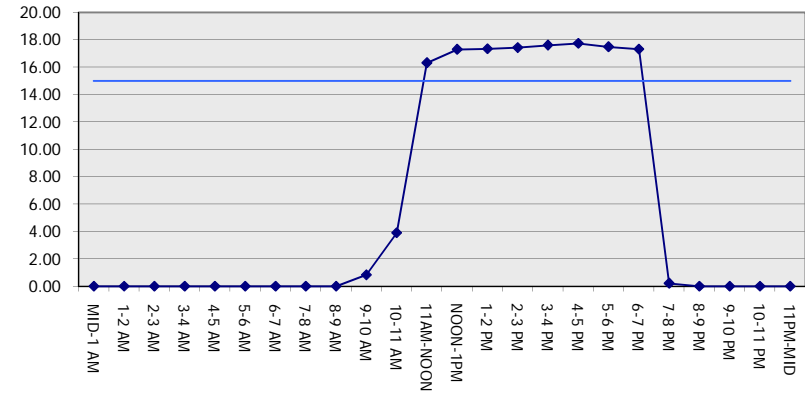
**GRAPHICAL REPRESENTATION OF TRAFFIC MODEL INPUT AND OUTPUT**

**SUNDAY SOUTHBOUND DIRECTION**

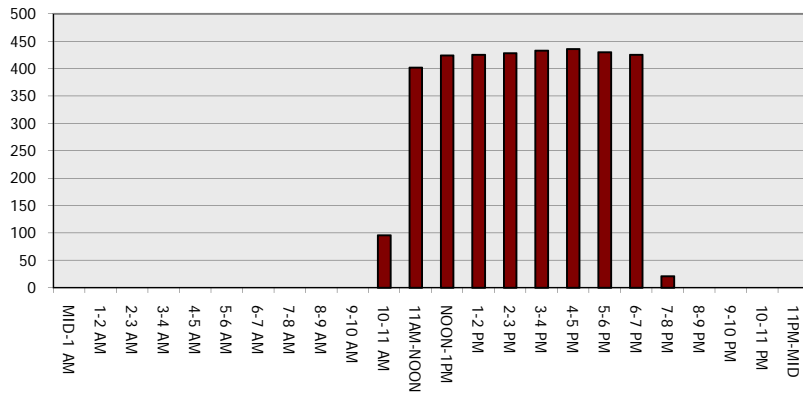
**Main Route - Traffic Demand (Vehicles Per Hour)**



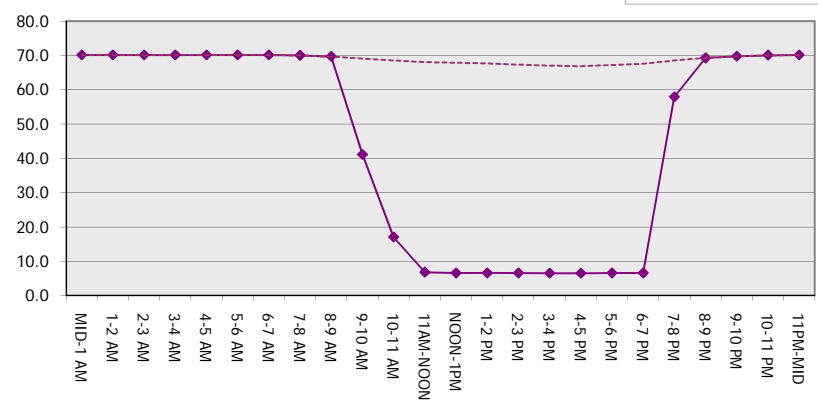
**Main Route Average Delay Per Vehicle (Minutes)**



**Main Route - Average Queue Length (Vehicles)**



**Main Route - Average Speed (MPH)**



<b>USH 41: STH 114 TO BREEZWOOD LN/BELL ST (WINNEBAGO COUNTY)</b> <b>OFF-PEAK DAY 2 LANE CLOSURE</b> <b>NO DIVERSION ROUTE (MAX QUEUE METHOD)</b>	<b>OCTOBER</b>
	Analyzed for 2009 Construction Season

<b>SUMMARY OF TRAFFIC MODEL OUTPUT</b>	
SUNDAY	NORTHBOUND DIRECTION

TIME OF DAY	FLOWS AND CAPACITY IN VEH/HR						AVERAGE SPEEDS IN MPH			
	MAIN ROUTE		SITE CAPA CITY	FLOW		AV.DEL PER VEH (MINS)	AVERAGE QUEUE (VEH)	MAIN ROUTE		SITE
	DEMAND FLOW	PCT HEAVY		MAIN ROUTE	'DIVER TED'			WITHOUT WORK ZONE	WITH WORK ZONE	
MID-1 AM	396	0.0	OFF	396	0	0.00	0	70.2	70.2	70.2
1-2 AM	276	0.0	OFF	276	0	0.00	0	70.2	70.2	70.2
2-3 AM	223	0.0	OFF	223	0	0.00	0	70.2	70.2	70.2
3-4 AM	146	0.0	OFF	146	0	0.00	0	70.2	70.2	70.2
4-5 AM	141	0.0	OFF	141	0	0.00	0	70.2	70.2	70.2
5-6 AM	260	0.0	OFF	260	0	0.00	0	70.2	70.2	70.2
6-7 AM	353	0.0	OFF	353	0	0.00	0	70.2	70.2	70.2
7-8 AM	635	0.0	OFF	635	0	0.00	0	69.9	69.9	69.9
8-9 AM	1322	0.0	OFF	1322	0	0.00	0	69.1	69.1	69.1
9-10 AM	1993	0.0	1499	1993	0	8.22+	227	68.2	10.4	30.8
10-11 AM	1923	0.0	1499	1434	489	17.06+	418	68.4	6.6	30.8
11AM-NOON	2064	0.0	1499	1500	564	17.27+	423	68.2	6.5	30.8
NOON-1PM	2198	0.0	1499	1500	698	17.28+	424	68.0	6.5	30.8
1-2 PM	2027	0.0	1500	1500	527	17.27+	423	68.2	6.5	30.8
2-3 PM	2088	0.0	1499	1500	588	17.27+	423	68.1	6.5	30.8
3-4 PM	2197	0.0	1499	1500	697	17.28+	424	68.0	6.5	30.8
4-5 PM	2188	0.0	1500	1500	688	17.28+	424	68.0	6.5	30.8
5-6 PM	2103	0.0	1500	1500	603	17.27+	423	68.1	6.5	30.8
6-7 PM	1854	0.0	1500	1500	354	17.26+	423	68.4	6.6	30.8
7-8 PM	1551	0.0	OFF	1551	0	0.21	20	68.8	58.6	58.6
8-9 PM	1111	0.0	OFF	1111	0	0.00	0	69.4	69.4	69.4
9-10 PM	831	0.0	OFF	831	0	0.00	0	69.7	69.7	69.7
10-11 PM	574	0.0	OFF	574	0	0.00	0	70.0	70.0	70.0
11PM-MID	321	0.0	OFF	321	0	0.00	0	70.2	70.2	70.2

"OFF" INDICATES NO ROAD WORK (ALL LANES OPEN TO TRAFFIC)

+ INDICATES QUEUEING EXCEEDS USER-SPECIFIED MAXIMUM LIMIT

*----- SITE BREAKDOWN DELAYS -----*	
BREAKDOWN DURATION (MINS)	0
RANGE OF QUEUE DELAY - MIN (VEH-H) MAX	0.0
AV BREAKDOWNS PER DAY	0.00
AV QUEUE DELAY/DAY (VEH-H)	0.0
AV TOTAL DELAY/DAY (VEH-H)	0.0

*----- SITE ACCIDENT DELAYS -----*	
BREAKDOWN DURATION (MINS)	0
RANGE OF QUEUE DELAY - MIN (VEH-H) MAX	0
AV BREAKDOWNS PER DAY	0
AV QUEUE DELAY/DAY (VEH-H)	0
AV TOTAL DELAY/DAY (VEH-H)	0

AVERAGE ACCIDENT NUMBERS (PIA/DAY)	
MAIN ROUTE WITHOUT WORKS	0.0064
MAIN ROUTE WITH WORKS	0.0042
'DIVERSION'	0.0027

PIA: Personal Injury Accidents

ECONOMIC IMPACT ON ROAD USERS	
ROAD USER COSTS PER DAY	\$93,854
CONGESTED HOURS PER DAY*	10

\*Delays Exceeding User-Specified Maximum

**USH 41: STH 114 TO BREEZEWOOD LN/BELL ST (WINNEBAGO COUNTY)**  
**OFF-PEAK DAY 2 LANE CLOSURE**  
**NO DIVERSION ROUTE (MAX QUEUE METHOD)**

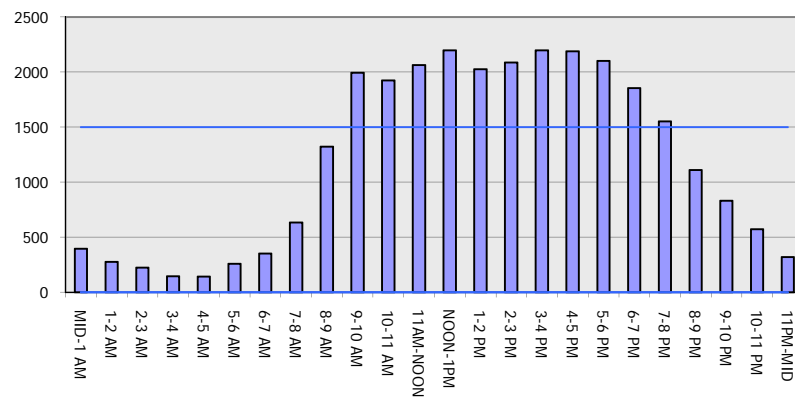
**OCTOBER**

Analyzed for 2009  
 Construction Season

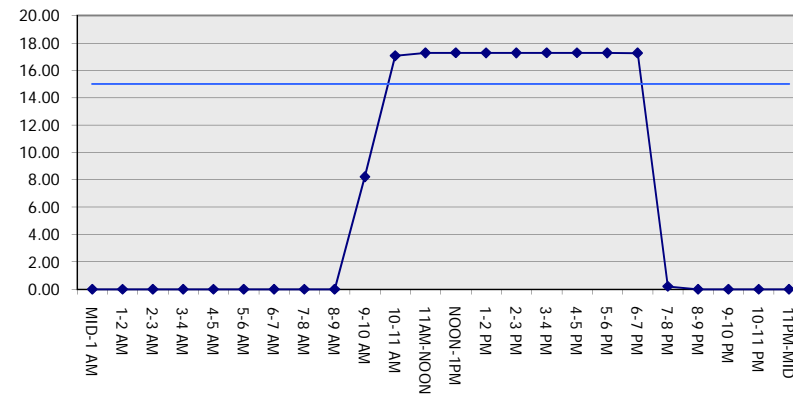
**GRAPHICAL REPRESENTATION OF TRAFFIC MODEL INPUT AND OUTPUT**

**SUNDAY NORTHBOUND DIRECTION**

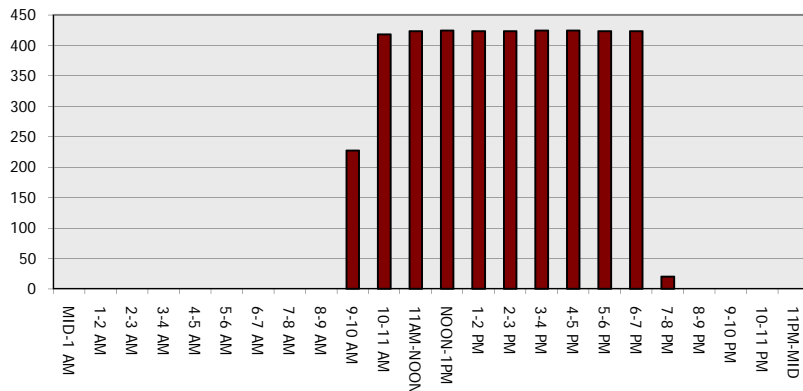
**Main Route - Traffic Demand (Vehicles Per Hour)**



**Main Route Average Delay Per Vehicle (Minutes)**



**Main Route - Average Queue Length (Vehicles)**



**Main Route - Average Speed (MPH)**

