

<b>USH 41: STH 114 TO BREEZEWOOD LN/BELL ST (WINNEBAGO COUNTY)</b> <b>OFF-PEAK DAY 2 LANE CLOSURE</b> <b>NO DIVERSION ROUTE (MAX QUEUE METHOD)</b>	<b>OCTOBER</b>
	Analyzed for 2009 Construction Season

**SUMMARY OF TRAFFIC MODEL OUTPUT**

MON-THUR      SOUTHBOUND DIRECTION

TIME OF DAY	FLOWS AND CAPACITY IN VEH/HR						AVERAGE SPEEDS IN MPH			
	MAIN ROUTE		SITE CAPA CITY	FLOW		AV.DEL PER VEH (MINS)	AVERAGE QUEUE (VEH)	MAIN ROUTE		SITE
	DEMAND FLOW	PCT HEAVY		MAIN ROUTE	'DIVER TED'			WITHOUT WORK ZONE	WITH WORK ZONE	
MID-1 AM	247	0.0	OFF	247	0	0.00	0	70.2	70.2	70.2
1-2 AM	170	0.0	OFF	170	0	0.00	0	70.2	70.2	70.2
2-3 AM	179	0.0	OFF	179	0	0.00	0	70.2	70.2	70.2
3-4 AM	239	0.0	OFF	239	0	0.00	0	70.2	70.2	70.2
4-5 AM	465	0.0	OFF	465	0	0.00	0	70.2	70.2	70.2
5-6 AM	1132	0.0	OFF	1132	0	0.00	0	69.3	69.3	69.3
6-7 AM	2291	0.0	OFF	2291	0	0.00	0	67.9	67.9	67.9
7-8 AM	3386	0.0	OFF	3386	0	0.00	0	66.5	66.5	66.5
8-9 AM	2489	0.0	OFF	2489	0	0.00	0	67.6	67.6	67.6
9-10 AM	2023	0.0	OFF	2023	0	0.00	0	68.2	68.2	68.2
10-11 AM	1949	0.0	1499	1949	0	8.33	223	68.3	10.2	30.8
11AM-NOON	2042	0.0	1499	1497	546	17.27+	423	68.2	6.5	30.8
NOON-1PM	2076	0.0	1499	1497	579	17.27+	423	68.1	6.5	30.8
1-2 PM	2259	0.0	1499	1498	761	17.28+	424	67.9	6.5	30.8
2-3 PM	2595	0.0	1499	1493	1102	17.33+	425	67.5	6.5	30.8
3-4 PM	2808	0.0	OFF	2808	0	0.30	29	67.3	54.1	54.1
4-5 PM	3297	0.0	OFF	3297	0	0.00	0	66.6	66.6	66.6
5-6 PM	2999	0.0	OFF	2999	0	0.00	0	67.0	67.0	67.0
6-7 PM	1838	0.0	OFF	1838	0	0.00	0	68.4	68.4	68.4
7-8 PM	1301	0.0	OFF	1301	0	0.00	0	69.1	69.1	69.1
8-9 PM	1215	0.0	OFF	1215	0	0.00	0	69.2	69.2	69.2
9-10 PM	1031	0.0	OFF	1031	0	0.00	0	69.4	69.4	69.4
10-11 PM	736	0.0	OFF	736	0	0.00	0	69.8	69.8	69.8
11PM-MID	427	0.0	OFF	427	0	0.00	0	70.2	70.2	70.2

"OFF" INDICATES NO ROAD WORK (ALL LANES OPEN TO TRAFFIC)

+ INDICATES QUEUEING EXCEEDS USER-SPECIFIED MAXIMUM LIMIT

*----- SITE BREAKDOWN DELAYS -----*	
BREAKDOWN DURATION (MINS)	0
RANGE OF QUEUE DELAY - MIN (VEH-H) MAX	0.0
AV BREAKDOWNS PER DAY	0.00
AV QUEUE DELAY/DAY (VEH-H)	0.0
AV TOTAL DELAY/DAY (VEH-H)	0.0

*----- SITE ACCIDENT DELAYS -----*	
BREAKDOWN DURATION (MINS)	0
RANGE OF QUEUE DELAY - MIN (VEH-H) MAX	0
AV BREAKDOWNS PER DAY	0
AV QUEUE DELAY/DAY (VEH-H)	0
AV TOTAL DELAY/DAY (VEH-H)	0

AVERAGE ACCIDENT NUMBERS (PIA/DAY)	
MAIN ROUTE WITHOUT WORKS	0.0087
MAIN ROUTE WITH WORKS	0.0075
'DIVERSION'	0.0015
PIA: Personal Injury Accidents	
IMPACTS ON ROAD USERS	
ROAD USER COSTS PER DAY	\$37,929
CONGESTED HOURS PER DAY*	4

\*Delays Exceeding User-Specified Maximum

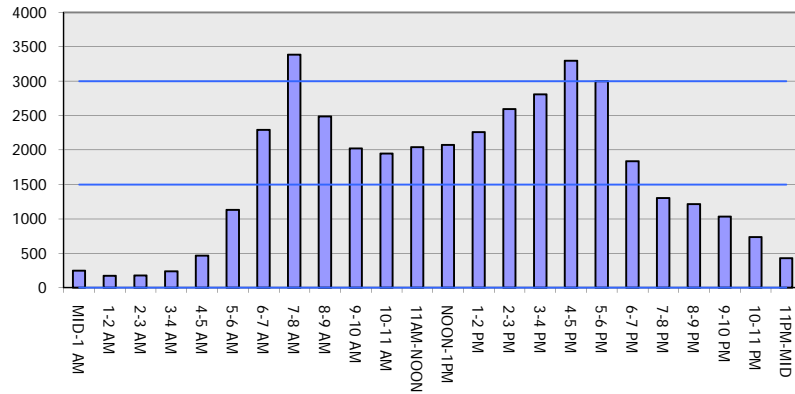
**USH 41: STH 114 TO BREEZEWOOD LN/BELL ST (WINNEBAGO COUNTY)**  
**OFF-PEAK DAY 2 LANE CLOSURE**  
**NO DIVERSION ROUTE (MAX QUEUE METHOD)**

**OCTOBER**

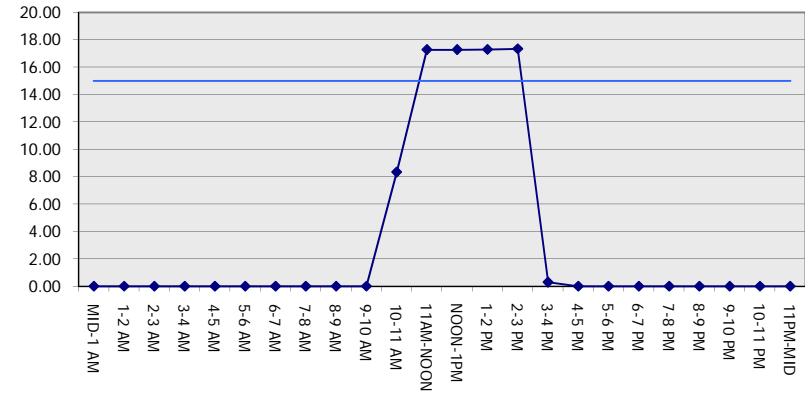
Analyzed for 2009  
 Construction Season

**GRAPHICAL REPRESENTATION OF TRAFFIC MODEL INPUT AND OUTPUT**  
**MON-THUR SOUTHBOUND DIRECTION**

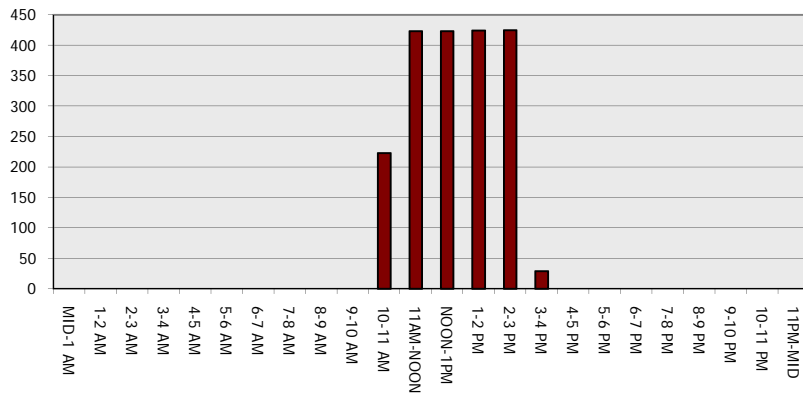
**Main Route - Traffic Demand (Vehicles Per Hour)**



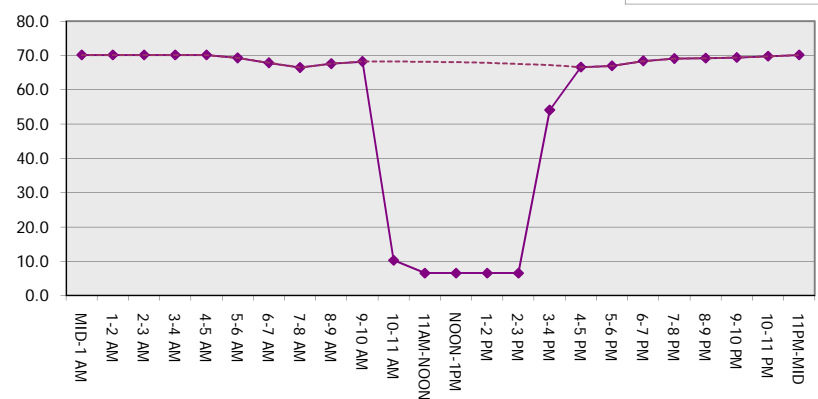
**Main Route Average Delay Per Vehicle (Minutes)**



**Main Route - Average Queue Length (Vehicles)**



**Main Route - Average Speed (MPH)**



<b>USH 41: STH 114 TO BREEZWOOD LN/BELL ST (WINNEBAGO COUNTY)</b> <b>OFF-PEAK DAY 2 LANE CLOSURE</b> <b>NO DIVERSION ROUTE (MAX QUEUE METHOD)</b>	<b>OCTOBER</b>
	Analyzed for 2009 Construction Season

**SUMMARY OF TRAFFIC MODEL OUTPUT**

MON-THUR                      NORTHBOUND DIRECTION

TIME OF DAY	FLOWS AND CAPACITY IN VEH/HR						AVERAGE SPEEDS IN MPH			
	MAIN ROUTE		SITE CAPA CITY	FLOW		AV.DEL PER VEH (MINS)	AVERAGE QUEUE (VEH)	MAIN ROUTE		SITE
	DEMAND FLOW	PCT HEAVY		MAIN ROUTE	'DIVER TED'			WITHOUT WORK ZONE	WITH WORK ZONE	
MID-1 AM	246	0.0	OFF	246	0	0.00	0	70.2	70.2	70.2
1-2 AM	179	0.0	OFF	179	0	0.00	0	70.2	70.2	70.2
2-3 AM	159	0.0	OFF	159	0	0.00	0	70.2	70.2	70.2
3-4 AM	186	0.0	OFF	186	0	0.00	0	70.2	70.2	70.2
4-5 AM	362	0.0	OFF	362	0	0.00	0	70.2	70.2	70.2
5-6 AM	1072	0.0	OFF	1072	0	0.00	0	69.4	69.4	69.4
6-7 AM	1991	0.0	OFF	1991	0	0.00	0	68.2	68.2	68.2
7-8 AM	3417	0.0	OFF	3417	0	0.00	0	66.5	66.5	66.5
8-9 AM	2347	0.0	OFF	2347	0	0.00	0	67.8	67.8	67.8
9-10 AM	2097	0.0	OFF	2097	0	0.00	0	68.1	68.1	68.1
10-11 AM	2079	0.0	1499	1951	128	9.96+	266	68.1	9.2	30.8
11AM-NOON	2196	0.0	1500	1496	700	17.28+	424	68.0	6.5	30.8
NOON-1PM	2184	0.0	1499	1497	688	17.28+	424	68.0	6.5	30.8
1-2 PM	2243	0.0	1499	1497	746	17.28+	424	67.9	6.5	30.8
2-3 PM	2587	0.0	1499	1491	1096	17.34+	426	67.5	6.5	30.8
3-4 PM	3188	0.0	OFF	3188	0	0.35	33	66.8	52.4	52.4
4-5 PM	3571	0.0	OFF	3571	0	0.00	0	66.3	66.3	66.3
5-6 PM	3228	0.0	OFF	3228	0	0.00	0	66.7	66.7	66.7
6-7 PM	2051	0.0	OFF	2051	0	0.00	0	68.2	68.2	68.2
7-8 PM	1275	0.0	OFF	1275	0	0.00	0	69.1	69.1	69.1
8-9 PM	1108	0.0	OFF	1108	0	0.00	0	69.4	69.4	69.4
9-10 PM	894	0.0	OFF	894	0	0.00	0	69.6	69.6	69.6
10-11 PM	634	0.0	OFF	634	0	0.00	0	69.9	69.9	69.9
11PM-MID	462	0.0	OFF	462	0	0.00	0	70.2	70.2	70.2

"OFF" INDICATES NO ROAD WORK (ALL LANES OPEN TO TRAFFIC)

+ INDICATES QUEUEING EXCEEDS USER-SPECIFIED MAXIMUM LIMIT

*----- SITE BREAKDOWN DELAYS -----*	
BREAKDOWN DURATION (MINS)	0
RANGE OF QUEUE DELAY - MIN (VEH-H) MAX	0.0
AV BREAKDOWNS PER DAY	0.00
AV QUEUE DELAY/DAY (VEH-H)	0.0
AV TOTAL DELAY/DAY (VEH-H)	0.0

*----- SITE ACCIDENT DELAYS -----*	
BREAKDOWN DURATION (MINS)	0
RANGE OF QUEUE DELAY - MIN (VEH-H) MAX	0
AV BREAKDOWNS PER DAY	0
AV QUEUE DELAY/DAY (VEH-H)	0
AV TOTAL DELAY/DAY (VEH-H)	0

AVERAGE ACCIDENT NUMBERS (PIA/DAY)	
MAIN ROUTE WITHOUT WORKS	0.0088
MAIN ROUTE WITH WORKS	0.0076
'DIVERSION'	0.0017

PIA: Personal Injury Accidents

ECONOMIC IMPACT ON ROAD USERS	
ROAD USER COSTS PER DAY	\$39,895
CONGESTED HOURS PER DAY*	5

\*Delays Exceeding User-Specified Maximum

**USH 41: STH 114 TO BREEZWOOD LN/BELL ST (WINNEBAGO COUNTY)**  
**OFF-PEAK DAY 2 LANE CLOSURE**  
**NO DIVERSION ROUTE (MAX QUEUE METHOD)**

**OCTOBER**

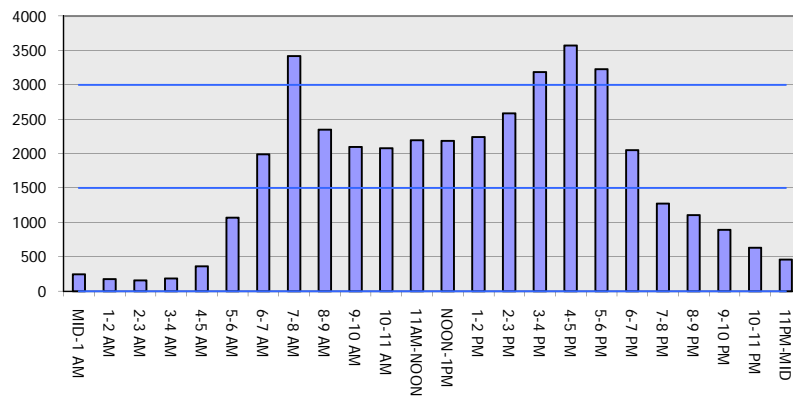
Analyzed for 2009  
 Construction Season

**GRAPHICAL REPRESENTATION OF TRAFFIC MODEL INPUT AND OUTPUT**

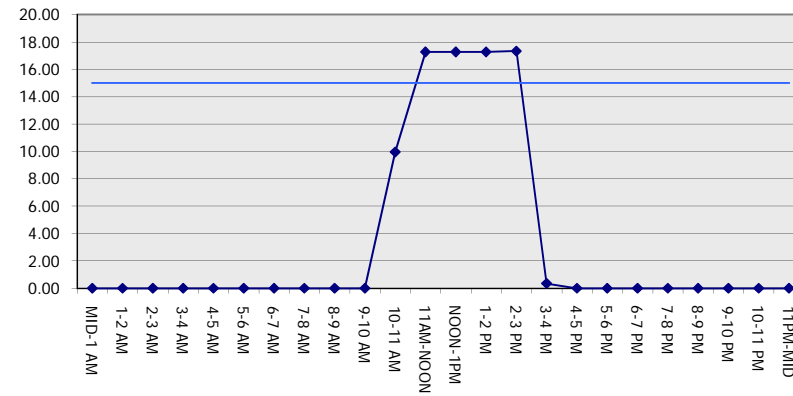
**MON-THUR**

**NORTHBOUND DIRECTION**

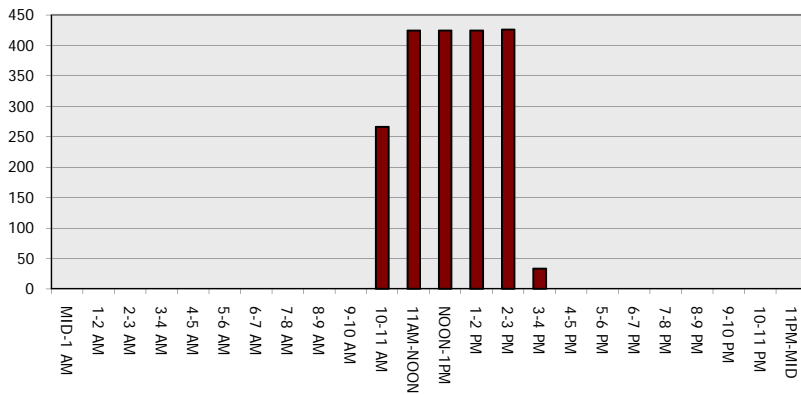
**Main Route - Traffic Demand (Vehicles Per Hour)**



**Main Route Average Delay Per Vehicle (Minutes)**



**Main Route - Average Queue Length (Vehicles)**



**Main Route - Average Speed (MPH)**

