

<b>USH 41: STH 114 TO BREEZEWOOD LN/BELL ST (WINNEBAGO COUNTY)</b> <b>OFF-PEAK DAY 2 LANE CLOSURE</b> <b>NO DIVERSION ROUTE (MAX QUEUE METHOD)</b>	<b>OCTOBER</b>
	Analyzed for 2009 Construction Season

**SUMMARY OF TRAFFIC MODEL OUTPUT**

FRIDAY      SOUTHBOUND DIRECTION

TIME OF DAY	FLOWS AND CAPACITY IN VEH/HR						AVERAGE SPEEDS IN MPH			
	MAIN ROUTE		SITE CAPA CITY	FLOW		AV.DEL PER VEH (MINS)	AVERAGE QUEUE (VEH)	MAIN ROUTE		SITE
	DEMAND FLOW	PCT HEAVY		MAIN ROUTE	'DIVER TED'			WITHOUT WORK ZONE	WITH WORK ZONE	
MID-1 AM	279	0.0	OFF	279	0	0.00	0	70.2	70.2	70.2
1-2 AM	196	0.0	OFF	196	0	0.00	0	70.2	70.2	70.2
2-3 AM	241	0.0	OFF	241	0	0.00	0	70.2	70.2	70.2
3-4 AM	254	0.0	OFF	254	0	0.00	0	70.2	70.2	70.2
4-5 AM	429	0.0	OFF	429	0	0.00	0	70.2	70.2	70.2
5-6 AM	1036	0.0	OFF	1036	0	0.00	0	69.4	69.4	69.4
6-7 AM	2057	0.0	OFF	2057	0	0.00	0	68.2	68.2	68.2
7-8 AM	3048	0.0	OFF	3048	0	0.00	0	66.9	66.9	66.9
8-9 AM	2456	0.0	OFF	2456	0	0.00	0	67.7	67.7	67.7
9-10 AM	2042	0.0	OFF	2042	0	0.00	0	68.2	68.2	68.2
10-11 AM	2227	0.0	1499	1856	371	11.29+	298	67.9	8.5	31.0
11AM-NOON	2399	0.0	1500	1526	872	17.37+	426	67.8	6.5	30.8
NOON-1PM	2675	0.0	1500	1530	1145	17.41+	428	67.4	6.5	30.8
1-2 PM	2911	0.0	1500	1517	1394	17.55+	431	67.1	6.5	30.8
2-3 PM	3145	0.0	1500	1504	1640	17.75+	437	66.8	6.5	30.8
3-4 PM	3444	0.0	OFF	3444	0	0.41	36	66.4	50.2	50.2
4-5 PM	3732	0.0	OFF	3732	0	0.00	0	65.4	65.4	65.4
5-6 PM	3409	0.0	OFF	3409	0	0.00	0	66.5	66.5	66.5
6-7 PM	2346	0.0	OFF	2346	0	0.00	0	67.8	67.8	67.8
7-8 PM	1645	0.0	OFF	1645	0	0.00	0	68.7	68.7	68.7
8-9 PM	1424	0.0	OFF	1424	0	0.00	0	69.0	69.0	69.0
9-10 PM	1282	0.0	OFF	1282	0	0.00	0	69.1	69.1	69.1
10-11 PM	1005	0.0	OFF	1005	0	0.00	0	69.5	69.5	69.5
11PM-MID	644	0.0	OFF	644	0	0.00	0	69.9	69.9	69.9

"OFF" INDICATES NO ROAD WORK (ALL LANES OPEN TO TRAFFIC)

+ INDICATES QUEUEING EXCEEDS USER-SPECIFIED MAXIMUM LIMIT

*----- SITE BREAKDOWN DELAYS -----*	
BREAKDOWN DURATION (MINS)	0
RANGE OF QUEUE DELAY - MIN (VEH-H) MAX	0.0
AV BREAKDOWNS PER DAY	0.00
AV QUEUE DELAY/DAY (VEH-H)	0.0
AV TOTAL DELAY/DAY (VEH-H)	0.0

*----- SITE ACCIDENT DELAYS -----*	
BREAKDOWN DURATION (MINS)	0
RANGE OF QUEUE DELAY - MIN (VEH-H) MAX	0
AV BREAKDOWNS PER DAY	0
AV QUEUE DELAY/DAY (VEH-H)	0
AV TOTAL DELAY/DAY (VEH-H)	0

AVERAGE ACCIDENT NUMBERS (PIA/DAY)	
MAIN ROUTE WITHOUT WORKS	0.0099
MAIN ROUTE WITH WORKS	0.0081
'DIVERSION'	0.0028
<small>PIA: Personal Injury Accidents</small>	
IMPACTS ON ROAD USERS	
ROAD USER COSTS PER DAY	\$49,285
CONGESTED HOURS PER DAY*	5

\*Delays Exceeding User-Specified Maximum

**USH 41: STH 114 TO BREEZEWOOD LN/BELL ST (WINNEBAGO COUNTY)**  
**OFF-PEAK DAY 2 LANE CLOSURE**  
**NO DIVERSION ROUTE (MAX QUEUE METHOD)**

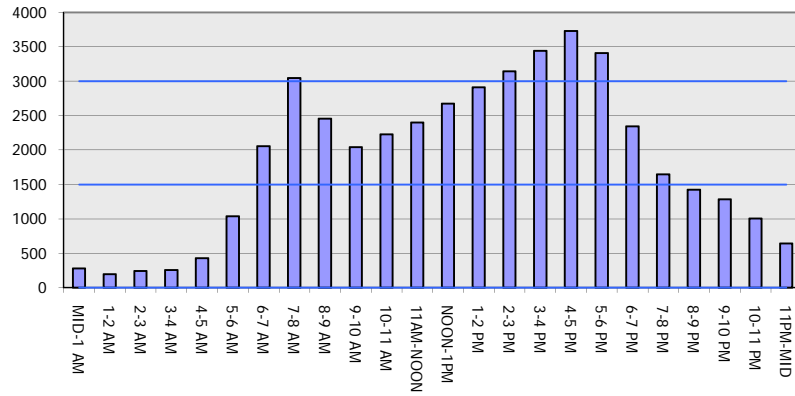
**OCTOBER**

Analyzed for 2009  
 Construction Season

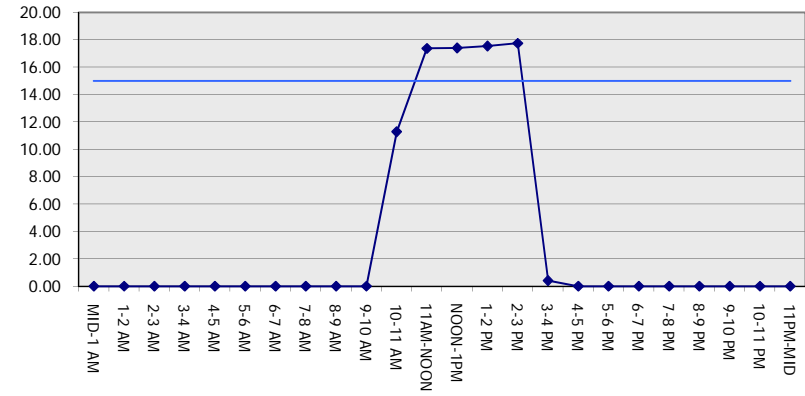
**GRAPHICAL REPRESENTATION OF TRAFFIC MODEL INPUT AND OUTPUT**

**FRIDAY SOUTHBOUND DIRECTION**

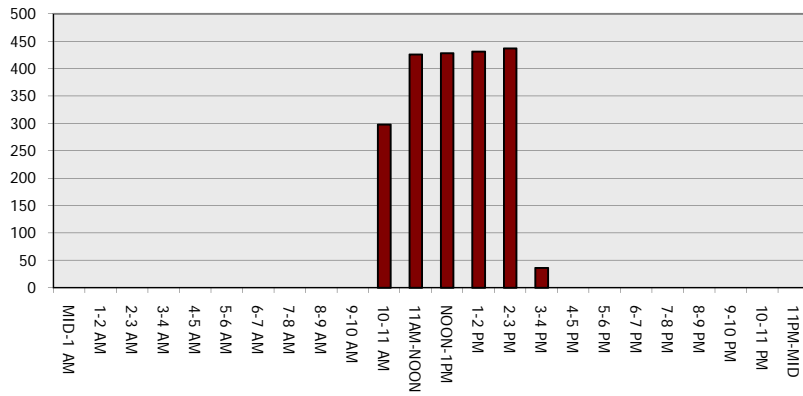
**Main Route - Traffic Demand (Vehicles Per Hour)**



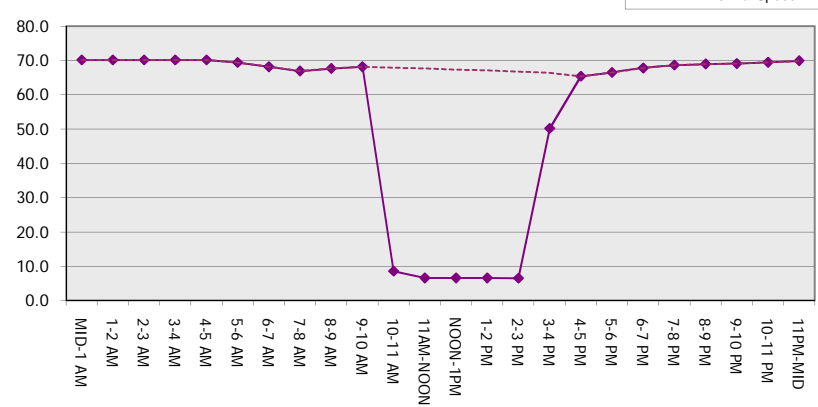
**Main Route Average Delay Per Vehicle (Minutes)**



**Main Route - Average Queue Length (Vehicles)**



**Main Route - Average Speed (MPH)**



<b>USH 41: STH 114 TO BREEZWOOD LN/BELL ST (WINNEBAGO COUNTY)</b> <b>OFF-PEAK DAY 2 LANE CLOSURE</b> <b>NO DIVERSION ROUTE (MAX QUEUE METHOD)</b>	<b>OCTOBER</b>
	Analyzed for 2009 Construction Season

**SUMMARY OF TRAFFIC MODEL OUTPUT**

FRIDAY NORTHBOUND DIRECTION

TIME OF DAY	FLOWS AND CAPACITY IN VEH/HR						AVERAGE SPEEDS IN MPH			
	MAIN ROUTE		SITE CAPA CITY	FLOW		AV.DEL PER VEH (MINS)	AVERAGE QUEUE (VEH)	MAIN ROUTE		SITE
	DEMAND FLOW	PCT HEAVY		MAIN ROUTE	'DIVER TED'			WITHOUT WORK ZONE	WITH WORK ZONE	
MID-1 AM	310	0.0	OFF	310	0	0.00	0	70.2	70.2	70.2
1-2 AM	243	0.0	OFF	243	0	0.00	0	70.2	70.2	70.2
2-3 AM	217	0.0	OFF	217	0	0.00	0	70.2	70.2	70.2
3-4 AM	216	0.0	OFF	216	0	0.00	0	70.2	70.2	70.2
4-5 AM	382	0.0	OFF	382	0	0.00	0	70.2	70.2	70.2
5-6 AM	961	0.0	OFF	961	0	0.00	0	69.6	69.6	69.6
6-7 AM	1841	0.0	OFF	1841	0	0.00	0	68.4	68.4	68.4
7-8 AM	3141	0.0	OFF	3141	0	0.00	0	66.8	66.8	66.8
8-9 AM	2306	0.0	OFF	2306	0	0.00	0	67.9	67.9	67.9
9-10 AM	2263	0.0	OFF	2263	0	0.00	0	67.9	67.9	67.9
10-11 AM	2514	0.0	1499	1959	555	13.19+	332	67.6	7.6	30.8
11AM-NOON	2816	0.0	1499	1477	1340	17.51+	430	67.3	6.5	30.8
NOON-1PM	2866	0.0	1499	1496	1370	17.53+	431	67.2	6.5	30.8
1-2 PM	3064	0.0	1499	1504	1560	17.70+	436	66.9	6.5	30.8
2-3 PM	3343	0.0	1499	1500	1843	17.79+	438	66.6	6.5	30.8
3-4 PM	3892	0.0	OFF	3892	0	0.51	45	64.3	46.1	46.1
4-5 PM	4114	0.0	OFF	4114	0	0.00	0	62.8	62.8	62.8
5-6 PM	3948	0.0	OFF	3948	0	0.00	0	63.9	63.9	63.9
6-7 PM	2966	0.0	OFF	2966	0	0.00	0	67.1	67.1	67.1
7-8 PM	2046	0.0	OFF	2046	0	0.00	0	68.2	68.2	68.2
8-9 PM	1434	0.0	OFF	1434	0	0.00	0	68.9	68.9	68.9
9-10 PM	1245	0.0	OFF	1245	0	0.00	0	69.2	69.2	69.2
10-11 PM	882	0.0	OFF	882	0	0.00	0	69.6	69.6	69.6
11PM-MID	650	0.0	OFF	650	0	0.00	0	69.9	69.9	69.9

"OFF" INDICATES NO ROAD WORK (ALL LANES OPEN TO TRAFFIC)

+ INDICATES QUEUEING EXCEEDS USER-SPECIFIED MAXIMUM LIMIT

*----- SITE BREAKDOWN DELAYS -----*	
BREAKDOWN DURATION (MINS)	0
RANGE OF QUEUE DELAY - MIN (VEH-H) MAX	0.0
AV BREAKDOWNS PER DAY	0.00
AV QUEUE DELAY/DAY (VEH-H)	0.0
AV TOTAL DELAY/DAY (VEH-H)	0.0

*----- SITE ACCIDENT DELAYS -----*	
BREAKDOWN DURATION (MINS)	0
RANGE OF QUEUE DELAY - MIN (VEH-H) MAX	0
AV BREAKDOWNS PER DAY	0
AV QUEUE DELAY/DAY (VEH-H)	0
AV TOTAL DELAY/DAY (VEH-H)	0

AVERAGE ACCIDENT NUMBERS (PIA/DAY)	
MAIN ROUTE WITHOUT WORKS	0.0106
MAIN ROUTE WITH WORKS	0.0086
'DIVERSION'	0.0034

PIA: Personal Injury Accidents

ECONOMIC IMPACT ON ROAD USERS	
ROAD USER COSTS PER DAY	\$55,218
CONGESTED HOURS PER DAY*	5

\*Delays Exceeding User-Specified Maximum

**USH 41: STH 114 TO BREEZWOOD LN/BELL ST (WINNEBAGO COUNTY)**  
**OFF-PEAK DAY 2 LANE CLOSURE**  
**NO DIVERSION ROUTE (MAX QUEUE METHOD)**

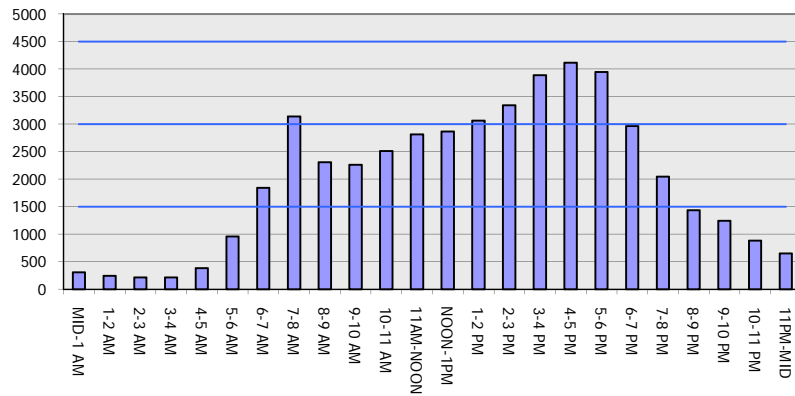
**OCTOBER**

Analyzed for 2009  
 Construction Season

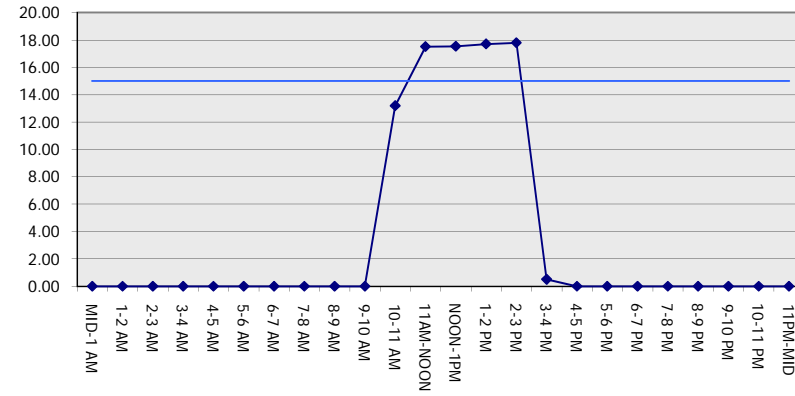
**GRAPHICAL REPRESENTATION OF TRAFFIC MODEL INPUT AND OUTPUT**

**FRIDAY NORTHBOUND DIRECTION**

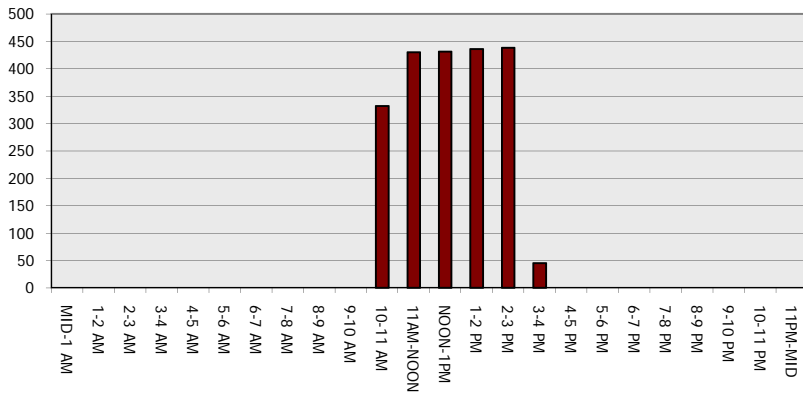
**Main Route - Traffic Demand (Vehicles Per Hour)**



**Main Route Average Delay Per Vehicle (Minutes)**



**Main Route - Average Queue Length (Vehicles)**



**Main Route - Average Speed (MPH)**

