

USH 41: STH 114 TO BREEZEWOOD LN/BELL ST (WINNEBAGO COUNTY) OFF-PEAK DAY CLOSURE NO DIVERSION ROUTE (MAX QUEUE METHOD)	OCTOBER
	Analyzed for 2009 Construction Season

SUMMARY OF TRAFFIC MODEL OUTPUT

FRIDAY SOUTHBOUND DIRECTION

TIME OF DAY	FLOWS AND CAPACITY IN VEH/HR						AVERAGE SPEEDS IN MPH			
	MAIN ROUTE		SITE CAPA CITY	FLOW		AV.DEL PER VEH (MINS)	AVERAGE QUEUE (VEH)	MAIN ROUTE		SITE
	DEMAND FLOW	PCT HEAVY		MAIN ROUTE	'DIVER TED'			WITHOUT WORK ZONE	WITH WORK ZONE	
MID-1 AM	279	0.0	OFF	279	0	0.00	0	70.2	70.2	70.2
1-2 AM	196	0.0	OFF	196	0	0.00	0	70.2	70.2	70.2
2-3 AM	241	0.0	OFF	241	0	0.00	0	70.2	70.2	70.2
3-4 AM	254	0.0	OFF	254	0	0.00	0	70.2	70.2	70.2
4-5 AM	429	0.0	OFF	429	0	0.00	0	70.2	70.2	70.2
5-6 AM	1036	0.0	OFF	1036	0	0.00	0	69.4	69.4	69.4
6-7 AM	2057	0.0	OFF	2057	0	0.00	0	68.2	68.2	68.2
7-8 AM	3048	0.0	OFF	3048	0	0.00	0	66.9	66.9	66.9
8-9 AM	2456	0.0	OFF	2456	0	0.00	0	67.7	67.7	67.7
9-10 AM	2042	0.0	OFF	2042	0	0.00	0	68.2	68.2	68.2
10-11 AM	2227	0.0	3000	2227	0	0.33	0	67.9	53.6	49.7
11AM-NOON	2399	0.0	3000	2399	0	0.34	0	67.8	53.3	49.4
NOON-1PM	2675	0.0	3000	2675	0	0.52	0	67.4	47.6	42.9
1-2 PM	2911	0.0	2999	2911	0	0.67	0	67.1	43.7	38.7
2-3 PM	3145	0.0	2999	3145	0	1.59	55	66.8	29.5	37.3
3-4 PM	3444	0.0	OFF	3444	0	0.04	4	66.4	64.2	64.2
4-5 PM	3732	0.0	OFF	3732	0	0.00	0	65.4	65.4	65.4
5-6 PM	3409	0.0	OFF	3409	0	0.00	0	66.5	66.5	66.5
6-7 PM	2346	0.0	OFF	2346	0	0.00	0	67.8	67.8	67.8
7-8 PM	1645	0.0	OFF	1645	0	0.00	0	68.7	68.7	68.7
8-9 PM	1424	0.0	OFF	1424	0	0.00	0	69.0	69.0	69.0
9-10 PM	1282	0.0	OFF	1282	0	0.00	0	69.1	69.1	69.1
10-11 PM	1005	0.0	OFF	1005	0	0.00	0	69.5	69.5	69.5
11PM-MID	644	0.0	OFF	644	0	0.00	0	69.9	69.9	69.9

"OFF" INDICATES NO ROAD WORK (ALL LANES OPEN TO TRAFFIC)

----- SITE BREAKDOWN DELAYS -----	
BREAKDOWN DURATION (MINS)	0
RANGE OF QUEUE DELAY - MIN (VEH-H) MAX	0.0
AV BREAKDOWNS PER DAY	0.00
AV QUEUE DELAY/DAY (VEH-H)	0.0
AV TOTAL DELAY/DAY (VEH-H)	0.0

----- SITE ACCIDENT DELAYS -----	
BREAKDOWN DURATION (MINS)	0
RANGE OF QUEUE DELAY - MIN (VEH-H) MAX	0
AV BREAKDOWNS PER DAY	0
AV QUEUE DELAY/DAY (VEH-H)	0
AV TOTAL DELAY/DAY (VEH-H)	0

AVERAGE ACCIDENT NUMBERS (PIA/DAY)	
MAIN ROUTE WITHOUT WORKS	0.0099
MAIN ROUTE WITH WORKS	0.0090
'DIVERSION'	0.0000
<small>PIA: Personal Injury Accidents</small>	
IMPACTS ON ROAD USERS	
ROAD USER COSTS PER DAY	\$1,965
CONGESTED HOURS PER DAY*	0

*Delays Exceeding User-Specified Maximum

**USH 41: STH 114 TO BREEZEWOOD LN/BELL ST (WINNEBAGO COUNTY)
OFF-PEAK DAY CLOSURE
NO DIVERSION ROUTE (MAX QUEUE METHOD)**

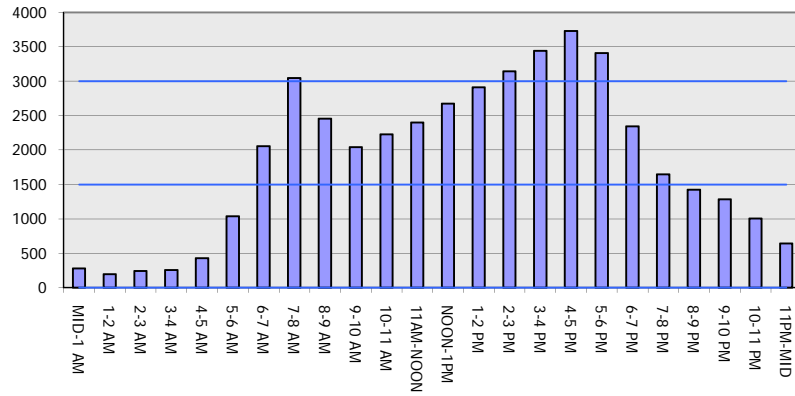
OCTOBER

Analyzed for 2009
Construction Season

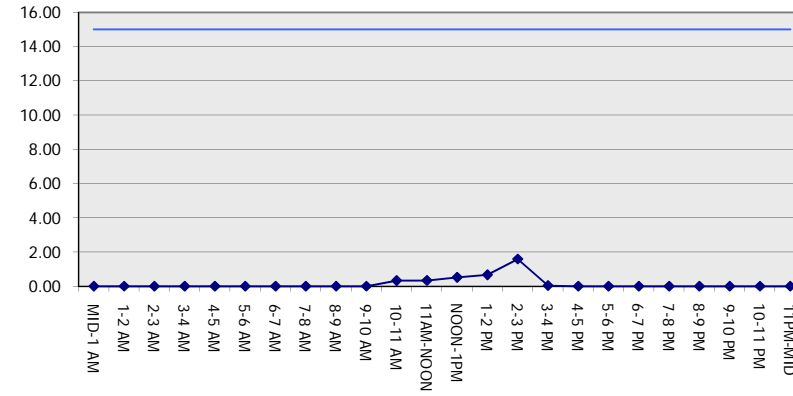
GRAPHICAL REPRESENTATION OF TRAFFIC MODEL INPUT AND OUTPUT

FRIDAY SOUTHBOUND DIRECTION

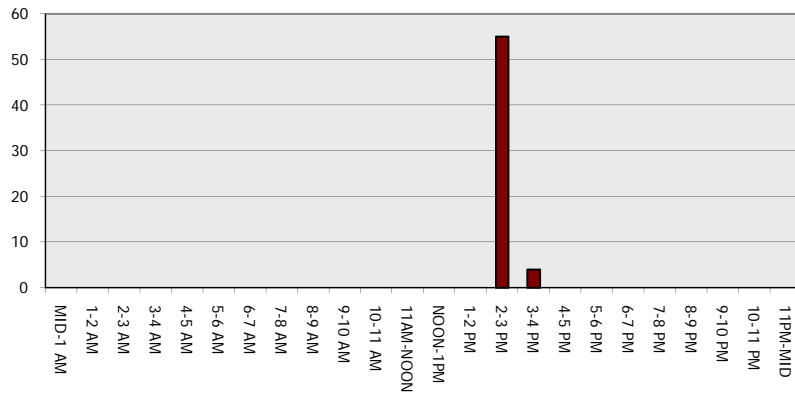
Main Route - Traffic Demand (Vehicles Per Hour)



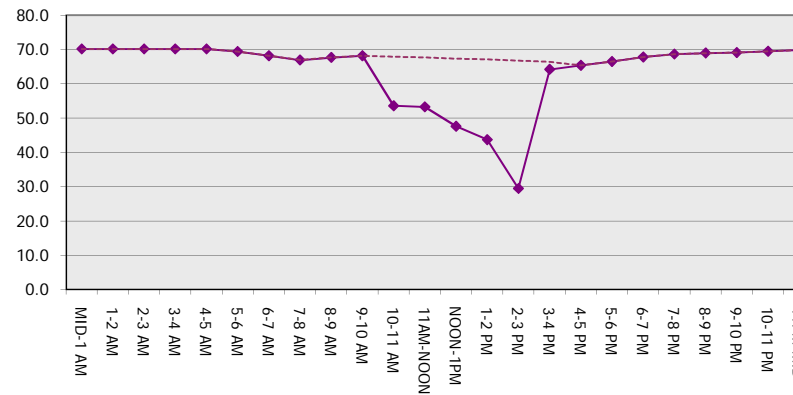
Main Route Average Delay Per Vehicle (Minutes)



Main Route - Average Queue Length (Vehicles)



Main Route - Average Speed (MPH)



USH 41: STH 114 TO BREEZEWOOD LN/BELL ST (WINNEBAGO COUNTY) OFF-PEAK DAY CLOSURE NO DIVERSION ROUTE (MAX QUEUE METHOD)	OCTOBER
	Analyzed for 2009 Construction Season

SUMMARY OF TRAFFIC MODEL OUTPUT

FRIDAY NORTHBOUND DIRECTION

TIME OF DAY	FLOWS AND CAPACITY IN VEH/HR						AVERAGE SPEEDS IN MPH			
	MAIN ROUTE		SITE CAPA CITY	FLOW		AV.DEL PER VEH (MINS)	AVERAGE QUEUE (VEH)	MAIN ROUTE		SITE
	DEMAND FLOW	PCT HEAVY		MAIN ROUTE	'DIVER TED'			WITHOUT WORK ZONE	WITH WORK ZONE	
MID-1 AM	310	0.0	OFF	310	0	0.00	0	70.2	70.2	70.2
1-2 AM	243	0.0	OFF	243	0	0.00	0	70.2	70.2	70.2
2-3 AM	217	0.0	OFF	217	0	0.00	0	70.2	70.2	70.2
3-4 AM	216	0.0	OFF	216	0	0.00	0	70.2	70.2	70.2
4-5 AM	382	0.0	OFF	382	0	0.00	0	70.2	70.2	70.2
5-6 AM	961	0.0	OFF	961	0	0.00	0	69.6	69.6	69.6
6-7 AM	1841	0.0	OFF	1841	0	0.00	0	68.4	68.4	68.4
7-8 AM	3141	0.0	OFF	3141	0	0.00	0	66.8	66.8	66.8
8-9 AM	2306	0.0	OFF	2306	0	0.00	0	67.9	67.9	67.9
9-10 AM	2263	0.0	OFF	2263	0	0.00	0	67.9	67.9	67.9
10-11 AM	2514	0.0	3000	2514	0	0.41	0	67.6	50.8	46.5
11AM-NOON	2816	0.0	3000	2816	0	0.61	0	67.3	45.2	40.2
NOON-1PM	2866	0.0	2999	2866	0	0.64	0	67.2	44.4	39.4
1-2 PM	3064	0.0	2999	3064	0	1.00	16	66.9	37.3	37.3
2-3 PM	3343	0.0	3000	3343	0	4.17	209	66.6	17.5	37.3
3-4 PM	3892	0.0	OFF	3892	0	0.45	39	64.3	47.8	47.8
4-5 PM	4114	0.0	OFF	4114	0	0.00	0	62.8	62.8	62.8
5-6 PM	3948	0.0	OFF	3948	0	0.00	0	63.9	63.9	63.9
6-7 PM	2966	0.0	OFF	2966	0	0.00	0	67.1	67.1	67.1
7-8 PM	2046	0.0	OFF	2046	0	0.00	0	68.2	68.2	68.2
8-9 PM	1434	0.0	OFF	1434	0	0.00	0	68.9	68.9	68.9
9-10 PM	1245	0.0	OFF	1245	0	0.00	0	69.2	69.2	69.2
10-11 PM	882	0.0	OFF	882	0	0.00	0	69.6	69.6	69.6
11PM-MID	650	0.0	OFF	650	0	0.00	0	69.9	69.9	69.9

"OFF" INDICATES NO ROAD WORK (ALL LANES OPEN TO TRAFFIC)

----- SITE BREAKDOWN DELAYS -----	
BREAKDOWN DURATION (MINS)	0
RANGE OF QUEUE DELAY - MIN (VEH-H) MAX	0.0
AV BREAKDOWNS PER DAY	0.00
AV QUEUE DELAY/DAY (VEH-H)	0.0
AV TOTAL DELAY/DAY (VEH-H)	0.0

----- SITE ACCIDENT DELAYS -----	
BREAKDOWN DURATION (MINS)	0
RANGE OF QUEUE DELAY - MIN (VEH-H) MAX	0
AV BREAKDOWNS PER DAY	0
AV QUEUE DELAY/DAY (VEH-H)	0
AV TOTAL DELAY/DAY (VEH-H)	0

AVERAGE ACCIDENT NUMBERS (PIA/DAY)	
MAIN ROUTE WITHOUT WORKS	0.0106
MAIN ROUTE WITH WORKS	0.0096
'DIVERSION'	0.0000

PIA: Personal Injury Accidents

ECONOMIC IMPACT ON ROAD USERS	
ROAD USER COSTS PER DAY	\$4,573
CONGESTED HOURS PER DAY*	0

*Delays Exceeding User-Specified Maximum

**USH 41: STH 114 TO BREEZEWOOD LN/BELL ST (WINNEBAGO COUNTY)
OFF-PEAK DAY CLOSURE
NO DIVERSION ROUTE (MAX QUEUE METHOD)**

OCTOBER

Analyzed for 2009
Construction Season

**GRAPHICAL REPRESENTATION OF TRAFFIC MODEL INPUT AND OUTPUT
FRIDAY NORTHBOUND DIRECTION**

