

USH 41: USH 10 TO STH 114 (WINNEBAGO COUNTY) OFF-PEAK DAY 2 LANE CLOSURE NO DIVERSION ROUTE (MAX QUEUE METHOD)	OCTOBER
	Analyzed for 2009 Construction Season

SUMMARY OF TRAFFIC MODEL OUTPUT

SUNDAY SOUTHBOUND DIRECTION

TIME OF DAY	FLOWS AND CAPACITY IN VEH/HR						AVERAGE SPEEDS IN MPH				
	MAIN ROUTE		SITE CAPA CITY	FLOW		AV.DEL PER VEH (MINS)	AVERAGE QUEUE (VEH)	MAIN ROUTE		SITE	
	DEMAND FLOW	PCT HEAVY		MAIN ROUTE	'DIVER TED'			WITHOUT WORK ZONE	WITH WORK ZONE		
MID-1 AM	564	0.0	OFF	564	0	0.00	0	70.0	70.0	70.0	
1-2 AM	321	0.0	OFF	321	0	0.00	0	70.2	70.2	70.2	
2-3 AM	293	0.0	OFF	293	0	0.00	0	70.2	70.2	70.2	
3-4 AM	266	0.0	OFF	266	0	0.00	0	70.2	70.2	70.2	
4-5 AM	238	0.0	OFF	238	0	0.00	0	70.2	70.2	70.2	
5-6 AM	286	0.0	OFF	286	0	0.00	0	70.2	70.2	70.2	
6-7 AM	442	0.0	OFF	442	0	0.00	0	70.2	70.2	70.2	
7-8 AM	634	0.0	OFF	634	0	0.00	0	69.9	69.9	69.9	
8-9 AM	970	0.0	OFF	970	0	0.00	0	69.6	69.6	69.6	
9-10 AM	1560	0.0	1499	1560	0	1.78	25	68.8	41.5	31.7	
10-11 AM	2095	0.0	1500	1733	362	11.85+	308	68.1	12.7	30.9	
11AM-NOON	2598	0.0	1500	1500	1098	16.31+	400	67.5	9.7	31.0	
NOON-1PM	2776	0.0	1500	1500	1276	16.30+	400	67.3	9.7	31.0	
1-2 PM	2937	0.0	1500	1500	1437	16.29+	400	67.1	9.7	31.0	
2-3 PM	3229	0.0	1500	1500	1729	16.28+	400	66.7	9.7	31.0	
3-4 PM	3531	0.0	1500	1500	2031	16.26+	400	66.3	9.7	31.0	
4-5 PM	3702	0.0	1500	1500	2202	16.23+	400	65.6	9.7	31.0	
5-6 PM	3377	0.0	1500	1500	1877	16.27+	400	66.5	9.7	31.0	
6-7 PM	3019	0.0	1500	1500	1519	16.29+	400	67.0	9.7	31.0	
7-8 PM	2082	0.0	OFF	2082	0	0.16	14	68.1	64.4	64.4	
8-9 PM	1368	0.0	OFF	1368	0	0.00	0	69.1	69.1	69.1	
9-10 PM	917	0.0	OFF	917	0	0.00	0	69.6	69.6	69.6	
10-11 PM	628	0.0	OFF	628	0	0.00	0	69.9	69.9	69.9	
11PM-MID	362	0.0	OFF	362	0	0.00	0	70.2	70.2	70.2	

"OFF" INDICATES NO ROAD WORK (ALL LANES OPEN TO TRAFFIC)

+ INDICATES QUEUEING EXCEEDS USER-SPECIFIED MAXIMUM LIMIT

----- SITE BREAKDOWN DELAYS -----	
BREAKDOWN DURATION (MINS)	0
RANGE OF QUEUE DELAY - MIN (VEH-H) MAX	0.0
AV BREAKDOWNS PER DAY	0.00
AV QUEUE DELAY/DAY (VEH-H)	0.0
AV TOTAL DELAY/DAY (VEH-H)	0.0

----- SITE ACCIDENT DELAYS -----	
BREAKDOWN DURATION (MINS)	0
RANGE OF QUEUE DELAY - MIN (VEH-H) MAX	0
AV BREAKDOWNS PER DAY	0
AV QUEUE DELAY/DAY (VEH-H)	0
AV TOTAL DELAY/DAY (VEH-H)	0

AVERAGE ACCIDENT NUMBERS (PIA/DAY)	
MAIN ROUTE WITHOUT WORKS	0.0188
MAIN ROUTE WITH WORKS	0.0112
'DIVERSION'	0.0155
PIA: Personal Injury Accidents	
IMPACTS ON ROAD USERS	
ROAD USER COSTS PER DAY	\$121,281
CONGESTED HOURS PER DAY*	9

*Delays Exceeding User-Specified Maximum

**USH 41: USH 10 TO STH 114 (WINNEBAGO COUNTY)
 OFF-PEAK DAY 2 LANE CLOSURE
 NO DIVERSION ROUTE (MAX QUEUE METHOD)**

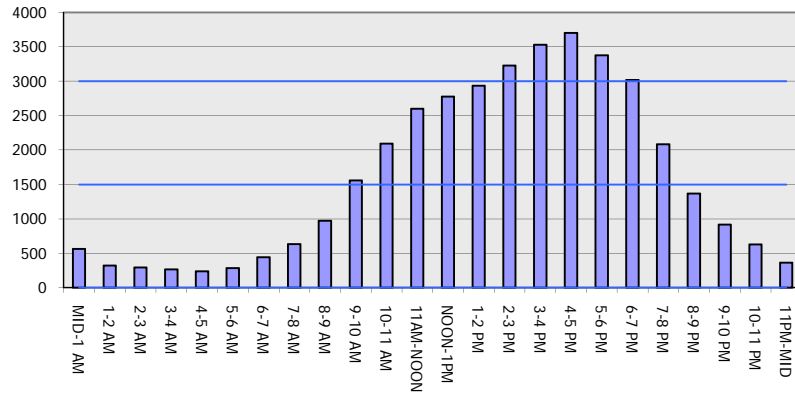
OCTOBER

Analyzed for 2009
 Construction Season

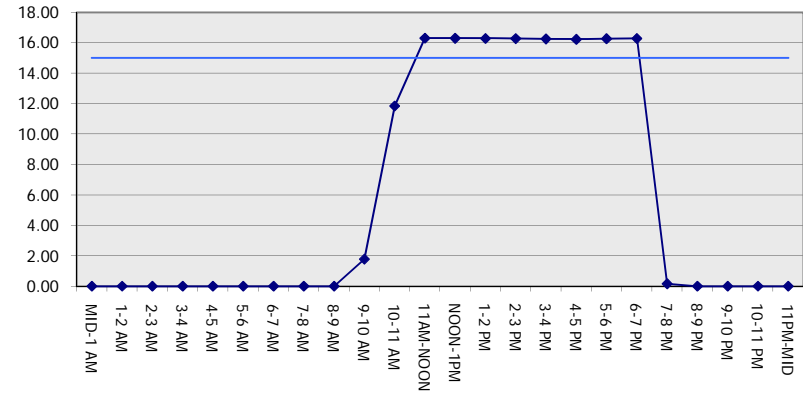
GRAPHICAL REPRESENTATION OF TRAFFIC MODEL INPUT AND OUTPUT

SUNDAY SOUTHBOUND DIRECTION

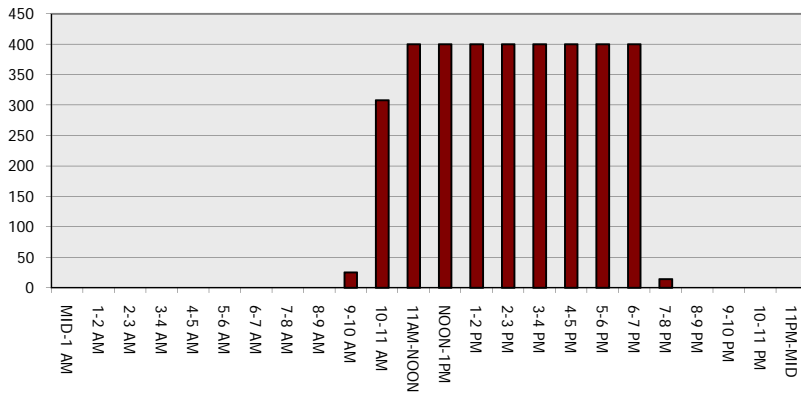
Main Route - Traffic Demand (Vehicles Per Hour)



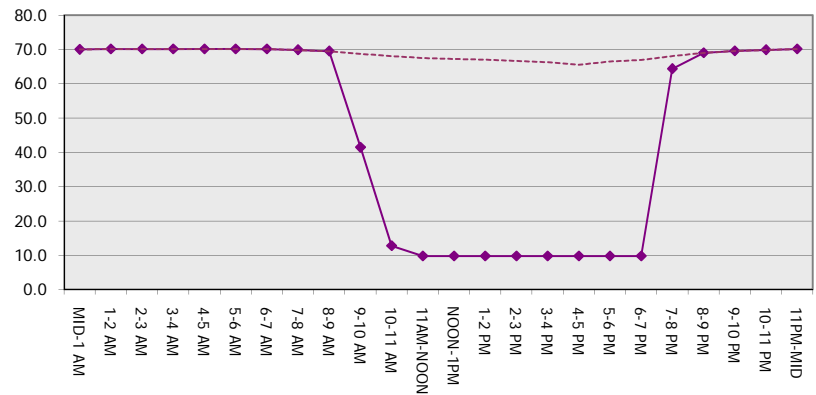
Main Route Average Delay Per Vehicle (Minutes)



Main Route - Average Queue Length (Vehicles)



Main Route - Average Speed (MPH)



USH 41: USH 10 TO STH 114 (WINNEBAGO COUNTY) OFF-PEAK DAY 2 LANE CLOSURE NO DIVERSION ROUTE (MAX QUEUE METHOD)	OCTOBER
	Analyzed for 2009 Construction Season

SUMMARY OF TRAFFIC MODEL OUTPUT

SUNDAY NORTHBOUND DIRECTION

TIME OF DAY	FLOWS AND CAPACITY IN VEH/HR						AVERAGE SPEEDS IN MPH			
	MAIN ROUTE		SITE CAPA CITY	FLOW		AV.DEL PER VEH (MINS)	AVERAGE QUEUE (VEH)	MAIN ROUTE		SITE
	DEMAND FLOW	PCT HEAVY		MAIN ROUTE	'DIVER TED'			WITHOUT WORK ZONE	WITH WORK ZONE	
MID-1 AM	475	0.0	OFF	475	0	0.00	0	70.2	70.2	70.2
1-2 AM	331	0.0	OFF	331	0	0.00	0	70.2	70.2	70.2
2-3 AM	269	0.0	OFF	269	0	0.00	0	70.2	70.2	70.2
3-4 AM	176	0.0	OFF	176	0	0.00	0	70.2	70.2	70.2
4-5 AM	169	0.0	OFF	169	0	0.00	0	70.2	70.2	70.2
5-6 AM	312	0.0	OFF	312	0	0.00	0	70.2	70.2	70.2
6-7 AM	423	0.0	OFF	423	0	0.00	0	70.2	70.2	70.2
7-8 AM	761	0.0	OFF	761	0	0.00	0	69.8	69.8	69.8
8-9 AM	1584	0.0	OFF	1584	0	0.00	0	68.7	68.7	68.7
9-10 AM	2388	0.0	1499	1899	489	11.55+	299	67.8	13.0	30.8
10-11 AM	2305	0.0	1500	1500	805	16.34+	400	67.9	9.7	30.8
11AM-NOON	2474	0.0	1500	1500	974	16.33+	400	67.7	9.7	30.8
NOON-1PM	2634	0.0	1500	1500	1134	16.32+	400	67.4	9.7	30.8
1-2 PM	2428	0.0	1500	1500	928	16.33+	400	67.7	9.7	30.8
2-3 PM	2502	0.0	1500	1500	1002	16.33+	400	67.6	9.7	30.8
3-4 PM	2632	0.0	1500	1500	1132	16.32+	400	67.4	9.7	30.8
4-5 PM	2622	0.0	1500	1500	1122	16.32+	400	67.5	9.7	30.8
5-6 PM	2520	0.0	1500	1500	1020	16.33+	400	67.6	9.7	30.8
6-7 PM	2222	0.0	1500	1500	722	16.34+	400	68.0	9.7	30.8
7-8 PM	1859	0.0	OFF	1859	0	0.21	19	68.4	63.5	63.5
8-9 PM	1332	0.0	OFF	1332	0	0.00	0	69.1	69.1	69.1
9-10 PM	995	0.0	OFF	995	0	0.00	0	69.5	69.5	69.5
10-11 PM	689	0.0	OFF	689	0	0.00	0	69.9	69.9	69.9
11PM-MID	385	0.0	OFF	385	0	0.00	0	70.2	70.2	70.2

"OFF" INDICATES NO ROAD WORK (ALL LANES OPEN TO TRAFFIC)

+ INDICATES QUEUEING EXCEEDS USER-SPECIFIED MAXIMUM LIMIT

----- SITE BREAKDOWN DELAYS -----	
BREAKDOWN DURATION (MINS)	0
RANGE OF QUEUE DELAY - MIN (VEH-H) MAX	0.0
AV BREAKDOWNS PER DAY	0.00
AV QUEUE DELAY/DAY (VEH-H)	0.0
AV TOTAL DELAY/DAY (VEH-H)	0.0

----- SITE ACCIDENT DELAYS -----	
BREAKDOWN DURATION (MINS)	0
RANGE OF QUEUE DELAY - MIN (VEH-H) MAX	0
AV BREAKDOWNS PER DAY	0
AV QUEUE DELAY/DAY (VEH-H)	0
AV TOTAL DELAY/DAY (VEH-H)	0

AVERAGE ACCIDENT NUMBERS (PIA/DAY)	
MAIN ROUTE WITHOUT WORKS	0.0170
MAIN ROUTE WITH WORKS	0.0114
'DIVERSION'	0.0107

PIA: Personal Injury Accidents

ECONOMIC IMPACT ON ROAD USERS	
ROAD USER COSTS PER DAY	\$108,849
CONGESTED HOURS PER DAY*	10

*Delays Exceeding User-Specified Maximum

**USH 41: USH 10 TO STH 114 (WINNEBAGO COUNTY)
OFF-PEAK DAY 2 LANE CLOSURE
NO DIVERSION ROUTE (MAX QUEUE METHOD)**

OCTOBER

Analyzed for 2009
Construction Season

GRAPHICAL REPRESENTATION OF TRAFFIC MODEL INPUT AND OUTPUT
SUNDAY NORTHBOUND DIRECTION

