

USH 41: USH 10 TO STH 114 (WINNEBAGO COUNTY) OFF-PEAK DAY 2 LANE CLOSURE NO DIVERSION ROUTE (MAX QUEUE METHOD)	AUGUST
	Analyzed for 2009 Construction Season

SUMMARY OF TRAFFIC MODEL OUTPUT

SATURDAY SOUTHBOUND DIRECTION

TIME OF DAY	FLOWS AND CAPACITY IN VEH/HR						AVERAGE SPEEDS IN MPH			
	MAIN ROUTE		SITE CAPA CITY	FLOW		AV.DEL PER VEH (MINS)	AVERAGE QUEUE (VEH)	MAIN ROUTE		SITE
	DEMAND FLOW	PCT HEAVY		MAIN ROUTE	'DIVER TED'			WITHOUT WORK ZONE	WITH WORK ZONE	
MID-1 AM	471	0.0	OFF	471	0	0.00	0	70.2	70.2	70.2
1-2 AM	326	0.0	OFF	326	0	0.00	0	70.2	70.2	70.2
2-3 AM	271	0.0	OFF	271	0	0.00	0	70.2	70.2	70.2
3-4 AM	206	0.0	OFF	206	0	0.00	0	70.2	70.2	70.2
4-5 AM	336	0.0	OFF	336	0	0.00	0	70.2	70.2	70.2
5-6 AM	503	0.0	OFF	503	0	0.00	0	70.1	70.1	70.1
6-7 AM	910	0.0	OFF	910	0	0.00	0	69.6	69.6	69.6
7-8 AM	1448	0.0	OFF	1448	0	0.00	0	68.9	68.9	68.9
8-9 AM	2101	0.0	1499	1949	152	8.56+	242	68.1	16.5	30.8
9-10 AM	2478	0.0	1500	1500	978	16.33+	400	67.6	9.7	30.8
10-11 AM	2813	0.0	1500	1500	1313	16.31+	400	67.3	9.7	30.8
11AM-NOON	2956	0.0	1500	1500	1456	16.30+	400	67.1	9.7	30.8
NOON-1PM	2869	0.0	1500	1500	1369	16.31+	400	67.2	9.7	30.8
1-2 PM	2847	0.0	1500	1500	1347	16.31+	400	67.2	9.7	30.8
2-3 PM	2794	0.0	1500	1500	1294	16.31+	400	67.3	9.7	30.8
3-4 PM	2606	0.0	1500	1500	1106	16.32+	400	67.5	9.7	30.8
4-5 PM	2518	0.0	1500	1500	1018	16.33+	400	67.6	9.7	30.8
5-6 PM	2235	0.0	1500	1500	735	16.34+	400	67.9	9.7	30.8
6-7 PM	1852	0.0	OFF	1852	0	0.27	24	68.4	62.3	62.3
7-8 PM	1598	0.0	OFF	1598	0	0.00	0	68.7	68.7	68.7
8-9 PM	1496	0.0	OFF	1496	0	0.00	0	68.9	68.9	68.9
9-10 PM	1575	0.0	OFF	1575	0	0.00	0	68.8	68.8	68.8
10-11 PM	1743	0.0	OFF	1743	0	0.00	0	68.6	68.6	68.6
11PM-MID	1888	0.0	OFF	1888	0	0.00	0	68.4	68.4	68.4

"OFF" INDICATES NO ROAD WORK (ALL LANES OPEN TO TRAFFIC)

+ INDICATES QUEUEING EXCEEDS USER-SPECIFIED MAXIMUM LIMIT

----- SITE BREAKDOWN DELAYS -----	
BREAKDOWN DURATION (MINS)	0
RANGE OF QUEUE DELAY - MIN (VEH-H) MAX	0.0
AV BREAKDOWNS PER DAY	0.00
AV QUEUE DELAY/DAY (VEH-H)	0.0
AV TOTAL DELAY/DAY (VEH-H)	0.0

----- SITE ACCIDENT DELAYS -----	
BREAKDOWN DURATION (MINS)	0
RANGE OF QUEUE DELAY - MIN (VEH-H) MAX	0
AV BREAKDOWNS PER DAY	0
AV QUEUE DELAY/DAY (VEH-H)	0
AV TOTAL DELAY/DAY (VEH-H)	0

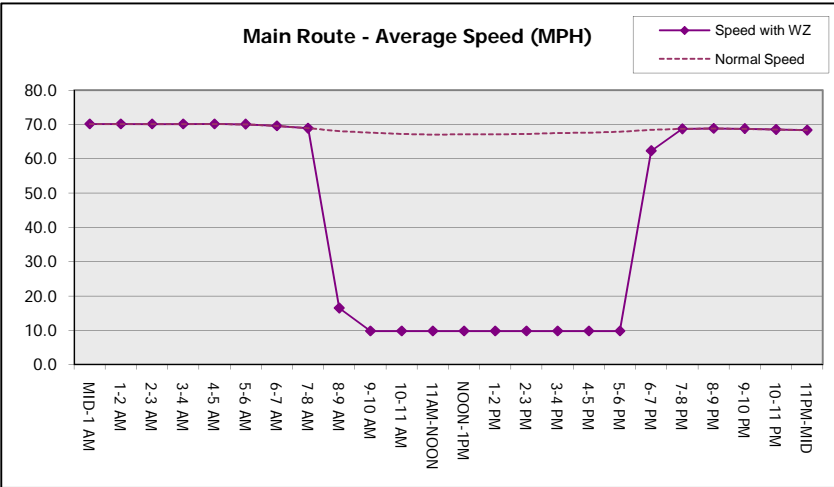
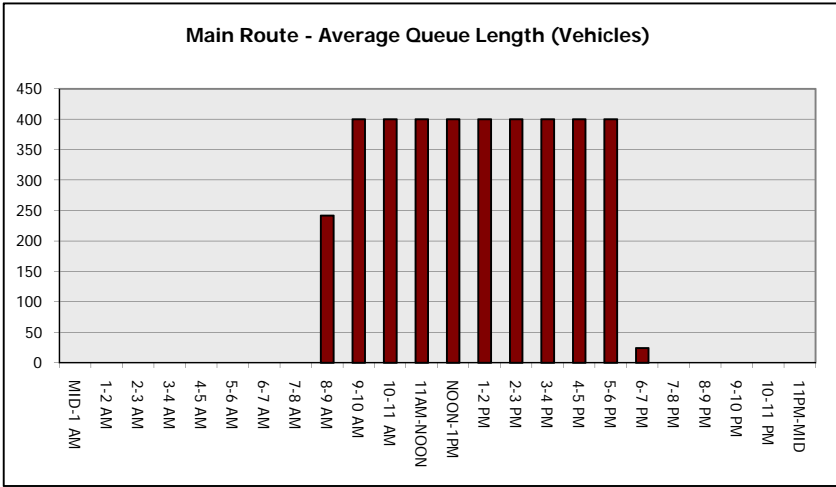
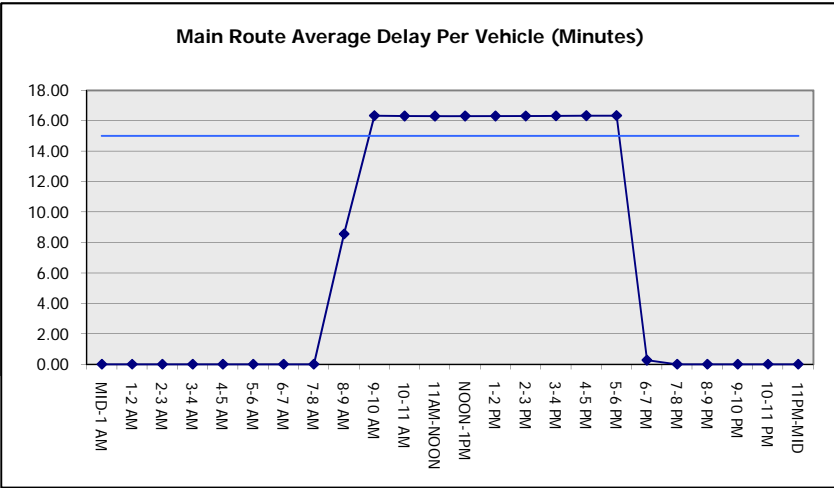
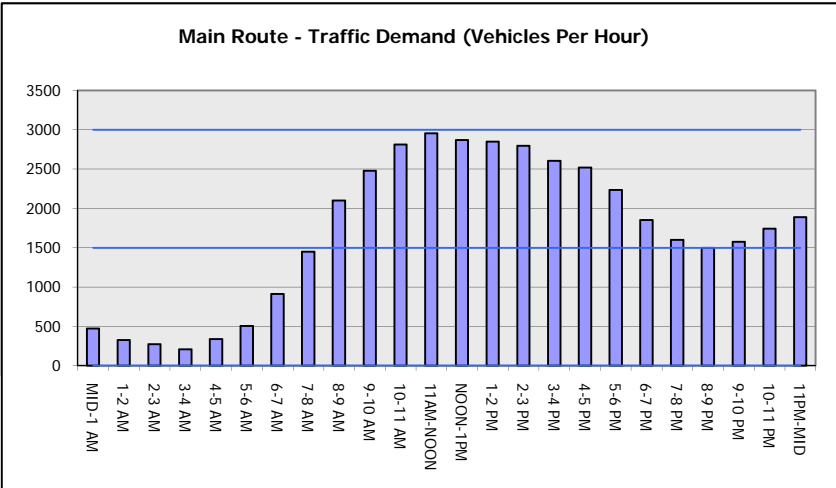
AVERAGE ACCIDENT NUMBERS (PIA/DAY)	
MAIN ROUTE WITHOUT WORKS	0.0202
MAIN ROUTE WITH WORKS	0.0138
'DIVERSION'	0.0123
PIA: Personal Injury Accidents	
IMPACTS ON ROAD USERS	
ROAD USER COSTS PER DAY	\$113,572
CONGESTED HOURS PER DAY*	10

*Delays Exceeding User-Specified Maximum

**USH 41: USH 10 TO STH 114 (WINNEBAGO COUNTY)
OFF-PEAK DAY 2 LANE CLOSURE
NO DIVERSION ROUTE (MAX QUEUE METHOD)**

AUGUST
Analyzed for 2009
Construction Season

GRAPHICAL REPRESENTATION OF TRAFFIC MODEL INPUT AND OUTPUT
SATURDAY SOUTHBOUND DIRECTION



USH 41: USH 10 TO STH 114 (WINNEBAGO COUNTY) OFF-PEAK DAY 2 LANE CLOSURE NO DIVERSION ROUTE (MAX QUEUE METHOD)	AUGUST
	Analyzed for 2009 Construction Season

SUMMARY OF TRAFFIC MODEL OUTPUT

SATURDAY NORTHBOUND DIRECTION

TIME OF DAY	FLOWS AND CAPACITY IN VEH/HR						AVERAGE SPEEDS IN MPH			
	MAIN ROUTE		SITE CAPA CITY	FLOW		AV.DEL PER VEH (MINS)	AVERAGE QUEUE (VEH)	MAIN ROUTE		SITE
	DEMAND FLOW	PCT HEAVY		MAIN ROUTE	'DIVER TED'			WITHOUT WORK ZONE	WITH WORK ZONE	
MID-1 AM	580	0.0	OFF	580	0	0.00	0	70.0	70.0	70.0
1-2 AM	378	0.0	OFF	378	0	0.00	0	70.2	70.2	70.2
2-3 AM	274	0.0	OFF	274	0	0.00	0	70.2	70.2	70.2
3-4 AM	223	0.0	OFF	223	0	0.00	0	70.2	70.2	70.2
4-5 AM	292	0.0	OFF	292	0	0.00	0	70.2	70.2	70.2
5-6 AM	491	0.0	OFF	491	0	0.00	0	70.1	70.1	70.1
6-7 AM	763	0.0	OFF	763	0	0.00	0	69.8	69.8	69.8
7-8 AM	1160	0.0	OFF	1160	0	0.00	0	69.3	69.3	69.3
8-9 AM	1658	0.0	1499	1658	0	2.49	47	68.7	35.8	30.8
9-10 AM	2175	0.0	1500	1761	414	13.74+	344	68.0	11.3	30.8
10-11 AM	2877	0.0	1500	1500	1377	16.31+	400	67.1	9.7	30.8
11AM-NOON	3216	0.0	1500	1500	1716	16.29+	400	66.8	9.7	30.8
NOON-1PM	3453	0.0	1500	1500	1953	16.28+	400	66.4	9.7	30.8
1-2 PM	3562	0.0	1500	1500	2062	16.27+	400	66.3	9.7	30.8
2-3 PM	3616	0.0	1500	1500	2116	16.27+	400	66.1	9.7	30.8
3-4 PM	3494	0.0	1500	1500	1994	16.28+	400	66.4	9.7	30.8
4-5 PM	3312	0.0	1500	1500	1812	16.29+	400	66.6	9.7	30.8
5-6 PM	3051	0.0	1500	1500	1551	16.30+	400	66.9	9.7	30.8
6-7 PM	2240	0.0	OFF	2240	0	0.26	23	67.9	62.2	62.2
7-8 PM	1627	0.0	OFF	1627	0	0.00	0	68.7	68.7	68.7
8-9 PM	1438	0.0	OFF	1438	0	0.00	0	68.9	68.9	68.9
9-10 PM	1231	0.0	OFF	1231	0	0.00	0	69.2	69.2	69.2
10-11 PM	1149	0.0	OFF	1149	0	0.00	0	69.3	69.3	69.3
11PM-MID	784	0.0	OFF	784	0	0.00	0	69.7	69.7	69.7

"OFF" INDICATES NO ROAD WORK (ALL LANES OPEN TO TRAFFIC)

+ INDICATES QUEUEING EXCEEDS USER-SPECIFIED MAXIMUM LIMIT

----- SITE BREAKDOWN DELAYS -----	
BREAKDOWN DURATION (MINS)	0
RANGE OF QUEUE DELAY - MIN (VEH-H) MAX	0.0
AV BREAKDOWNS PER DAY	0.00
AV QUEUE DELAY/DAY (VEH-H)	0.0
AV TOTAL DELAY/DAY (VEH-H)	0.0

----- SITE ACCIDENT DELAYS -----	
BREAKDOWN DURATION (MINS)	0
RANGE OF QUEUE DELAY - MIN (VEH-H) MAX	0
AV BREAKDOWNS PER DAY	0
AV QUEUE DELAY/DAY (VEH-H)	0
AV TOTAL DELAY/DAY (VEH-H)	0

AVERAGE ACCIDENT NUMBERS (PIA/DAY)	
MAIN ROUTE WITHOUT WORKS	0.0212
MAIN ROUTE WITH WORKS	0.0128
'DIVERSION'	0.0171

PIA: Personal Injury Accidents

ECONOMIC IMPACT ON ROAD USERS	
ROAD USER COSTS PER DAY	\$128,871
CONGESTED HOURS PER DAY*	9

*Delays Exceeding User-Specified Maximum

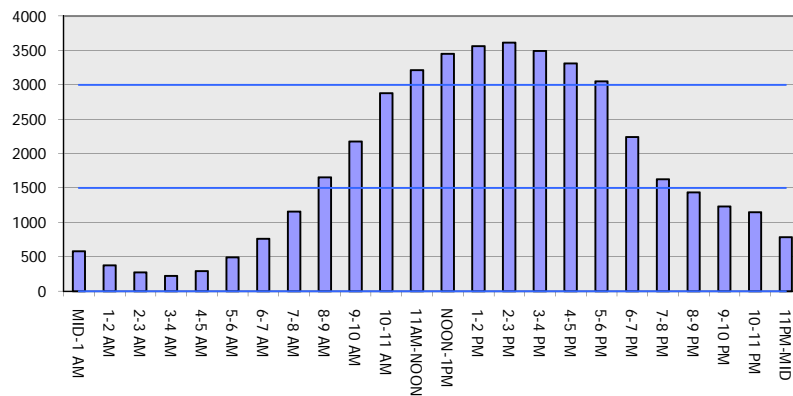
**USH 41: USH 10 TO STH 114 (WINNEBAGO COUNTY)
OFF-PEAK DAY 2 LANE CLOSURE
NO DIVERSION ROUTE (MAX QUEUE METHOD)**

AUGUST

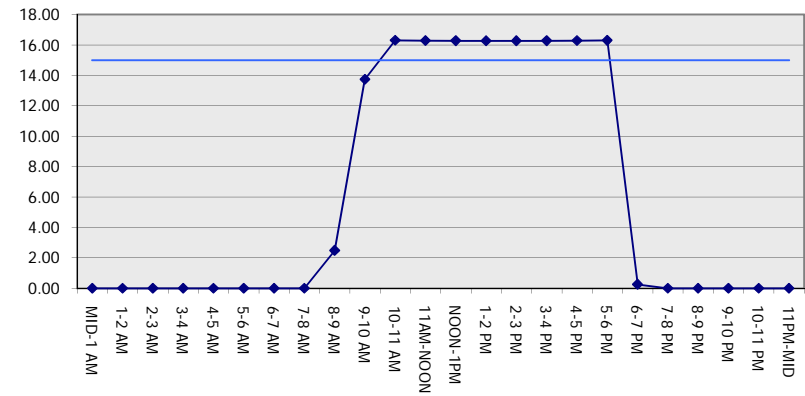
Analyzed for 2009
Construction Season

GRAPHICAL REPRESENTATION OF TRAFFIC MODEL INPUT AND OUTPUT
SATURDAY NORTHBOUND DIRECTION

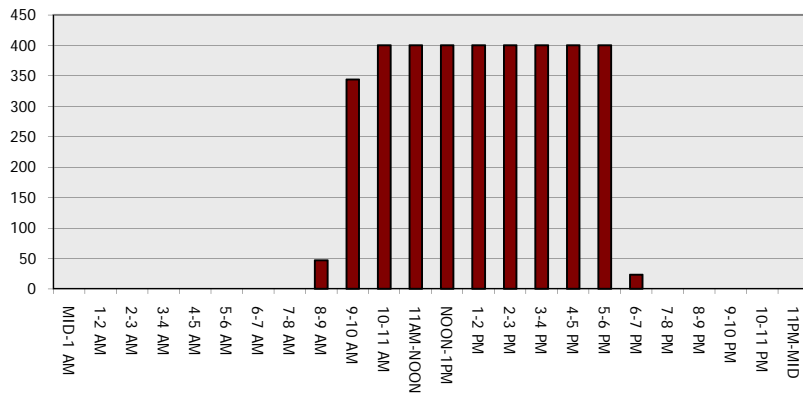
Main Route - Traffic Demand (Vehicles Per Hour)



Main Route Average Delay Per Vehicle (Minutes)



Main Route - Average Queue Length (Vehicles)



Main Route - Average Speed (MPH)

