

<b>USH 41: STH 76 TO USH 45 (WINNEBAGO COUNTY)</b> <b>OFF-PEAK DAY CLOSURE</b> <b>NO DIVERSION ROUTE (MAX QUEUE METHOD)</b>	<b>OCTOBER</b>
	Analyzed for 2009 Construction Season

**SUMMARY OF TRAFFIC MODEL OUTPUT**

MON-THUR                  SOUTHBOUND DIRECTION

TIME OF DAY	FLOWS AND CAPACITY IN VEH/HR						AVERAGE SPEEDS IN MPH				
	MAIN ROUTE		SITE CAPA CITY	FLOW		AV.DEL PER VEH (MINS)	AVERAGE QUEUE (VEH)	MAIN ROUTE		SITE	
	DEMAND FLOW	PCT HEAVY		MAIN ROUTE	'DIVER TED'			WITHOUT WORK ZONE	WITH WORK ZONE		
MID-1 AM	256	0.0	OFF	256	0	0.00	0	65.9	65.9	65.9	
1-2 AM	180	0.0	OFF	180	0	0.00	0	66.1	66.1	66.1	
2-3 AM	134	0.0	OFF	134	0	0.00	0	66.1	66.1	66.1	
3-4 AM	180	0.0	OFF	180	0	0.00	0	66.1	66.1	66.1	
4-5 AM	358	0.0	OFF	358	0	0.00	0	65.7	65.7	65.7	
5-6 AM	889	0.0	OFF	889	0	0.00	0	64.7	64.7	64.7	
6-7 AM	1763	0.0	OFF	1763	0	0.00	0	63.1	63.1	63.1	
7-8 AM	2500	0.0	OFF	2500	0	0.00	0	60.9	60.9	60.9	
8-9 AM	1815	0.0	OFF	1815	0	0.00	0	63.0	63.0	63.0	
9-10 AM	1521	0.0	OFF	1521	0	0.00	0	63.5	63.5	63.5	
10-11 AM	1501	0.0	1499	1501	0	1.04	0	63.6	46.9	30.8	
11AM-NOON	1553	0.0	1500	1553	0	1.95	26	63.5	38.1	30.8	
NOON-1PM	1579	0.0	1500	1579	0	4.31	91	63.5	25.6	30.8	
1-2 PM	1686	0.0	1500	1686	0	8.75	216	63.2	15.9	30.8	
2-3 PM	1931	0.0	1499	1593	338	15.71+	397	62.8	10.5	30.8	
3-4 PM	2128	0.0	OFF	2128	0	0.78	45	62.4	49.4	49.4	
4-5 PM	2433	0.0	OFF	2433	0	0.00	0	61.5	61.5	61.5	
5-6 PM	2092	0.0	OFF	2092	0	0.00	0	62.5	62.5	62.5	
6-7 PM	1251	0.0	OFF	1251	0	0.00	0	64.0	64.0	64.0	
7-8 PM	906	0.0	OFF	906	0	0.00	0	64.7	64.7	64.7	
8-9 PM	817	0.0	OFF	817	0	0.00	0	64.8	64.8	64.8	
9-10 PM	663	0.0	OFF	663	0	0.00	0	65.1	65.1	65.1	
10-11 PM	460	0.0	OFF	460	0	0.00	0	65.5	65.5	65.5	
11PM-MID	286	0.0	OFF	286	0	0.00	0	65.8	65.8	65.8	

"OFF" INDICATES NO ROAD WORK (ALL LANES OPEN TO TRAFFIC)

+ INDICATES QUEUEING EXCEEDS USER-SPECIFIED MAXIMUM LIMIT

*----- SITE BREAKDOWN DELAYS -----*	
BREAKDOWN DURATION (MINS)	0
RANGE OF QUEUE DELAY - MIN (VEH-H) MAX	0.0
AV BREAKDOWNS PER DAY	0.00
AV QUEUE DELAY/DAY (VEH-H)	0.0
AV TOTAL DELAY/DAY (VEH-H)	0.0

*----- SITE ACCIDENT DELAYS -----*	
BREAKDOWN DURATION (MINS)	0
RANGE OF QUEUE DELAY - MIN (VEH-H) MAX	0
AV BREAKDOWNS PER DAY	0
AV QUEUE DELAY/DAY (VEH-H)	0
AV TOTAL DELAY/DAY (VEH-H)	0

AVERAGE ACCIDENT NUMBERS (PIA/DAY)	
MAIN ROUTE WITHOUT WORKS	0.0143
MAIN ROUTE WITH WORKS	0.0136
'DIVERSION'	0.0004
<small>PIA: Personal Injury Accidents</small>	
IMPACTS ON ROAD USERS	
ROAD USER COSTS PER DAY	\$12,060
CONGESTED HOURS PER DAY*	1

\*Delays Exceeding User-Specified Maximum

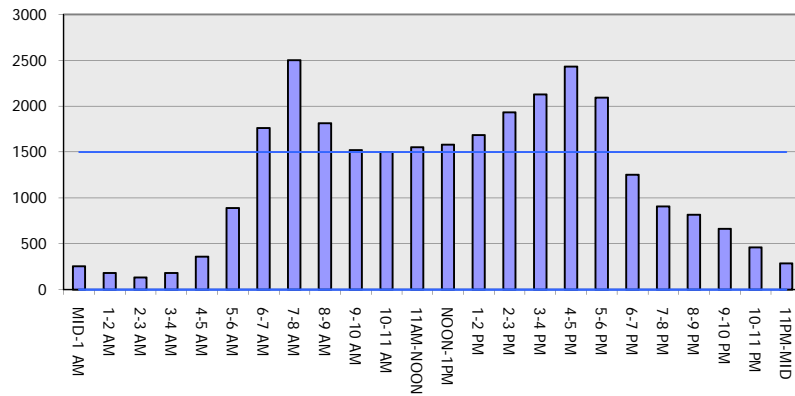
**USH 41: STH 76 TO USH 45 (WINNEBAGO COUNTY)  
OFF-PEAK DAY CLOSURE  
NO DIVERSION ROUTE (MAX QUEUE METHOD)**

**OCTOBER**

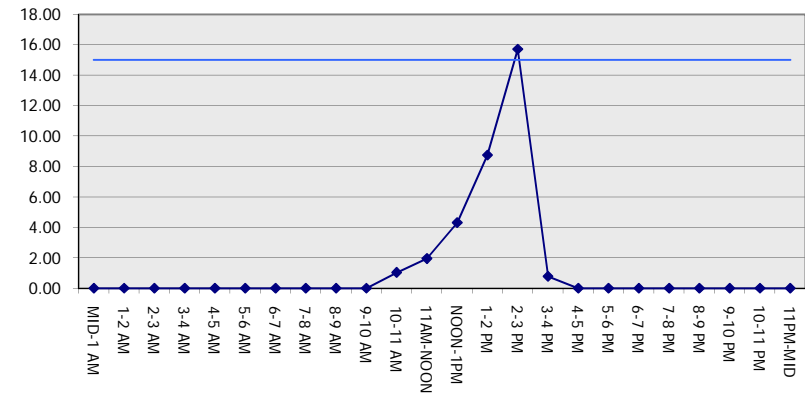
Analyzed for 2009  
Construction Season

**GRAPHICAL REPRESENTATION OF TRAFFIC MODEL INPUT AND OUTPUT**  
**MON-THUR SOUTHBOUND DIRECTION**

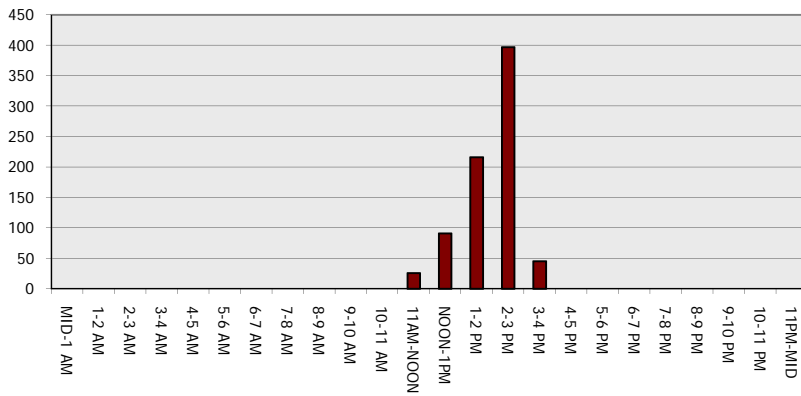
**Main Route - Traffic Demand (Vehicles Per Hour)**



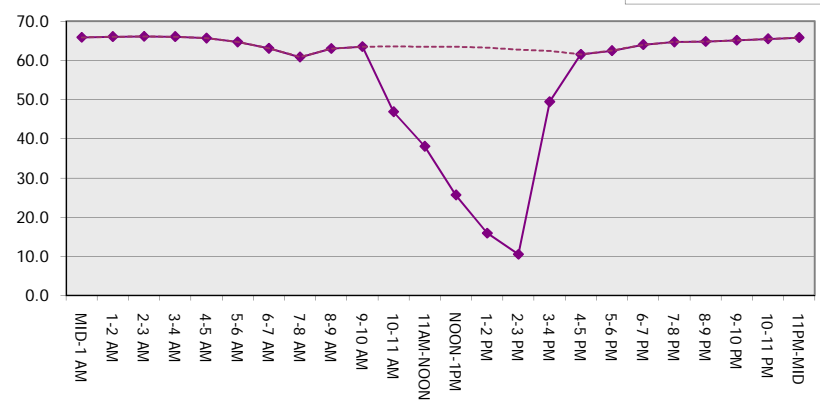
**Main Route Average Delay Per Vehicle (Minutes)**



**Main Route - Average Queue Length (Vehicles)**



**Main Route - Average Speed (MPH)**



<b>USH 41: STH 76 TO USH 45 (WINNEBAGO COUNTY)</b> <b>OFF-PEAK DAY CLOSURE</b> <b>NO DIVERSION ROUTE (MAX QUEUE METHOD)</b>	<b>OCTOBER</b>
	Analyzed for 2009 Construction Season

**SUMMARY OF TRAFFIC MODEL OUTPUT**

MON-THUR                      NORTHBOUND DIRECTION

TIME OF DAY	FLOWS AND CAPACITY IN VEH/HR						AVERAGE SPEEDS IN MPH			
	MAIN ROUTE		SITE CAPA CITY	FLOW		AV.DEL PER VEH (MINS)	AVERAGE QUEUE (VEH)	MAIN ROUTE		SITE
	DEMAND FLOW	PCT HEAVY		MAIN ROUTE	'DIVER TED'			WITHOUT WORK ZONE	WITH WORK ZONE	
MID-1 AM	184	0.0	OFF	184	0	0.00	0	66.0	66.0	66.0
1-2 AM	138	0.0	OFF	138	0	0.00	0	66.1	66.1	66.1
2-3 AM	124	0.0	OFF	124	0	0.00	0	66.1	66.1	66.1
3-4 AM	153	0.0	OFF	153	0	0.00	0	66.1	66.1	66.1
4-5 AM	286	0.0	OFF	286	0	0.00	0	65.8	65.8	65.8
5-6 AM	867	0.0	OFF	867	0	0.00	0	64.8	64.8	64.8
6-7 AM	1693	0.0	OFF	1693	0	0.00	0	63.2	63.2	63.2
7-8 AM	2580	0.0	OFF	2580	0	0.00	0	60.1	60.1	60.1
8-9 AM	1754	0.0	OFF	1754	0	0.00	0	63.1	63.1	63.1
9-10 AM	1662	0.0	OFF	1662	0	0.00	0	63.3	63.3	63.3
10-11 AM	1674	0.0	1499	1674	0	3.75	83	63.3	27.8	30.8
11AM-NOON	1757	0.0	1500	1757	0	11.67+	299	63.1	12.9	30.8
NOON-1PM	1776	0.0	1499	1499	277	16.11+	407	63.1	10.4	30.8
1-2 PM	1862	0.0	1499	1499	363	16.10+	407	62.9	10.4	30.8
2-3 PM	2129	0.0	1499	1499	630	16.09+	407	62.4	10.4	30.8
3-4 PM	2482	0.0	OFF	2482	0	1.14	60	61.1	44.5	44.5
4-5 PM	2869	0.0	OFF	2869	0	0.00	0	57.1	57.1	57.1
5-6 PM	2586	0.0	OFF	2586	0	0.00	0	60.0	60.0	60.0
6-7 PM	1599	0.0	OFF	1599	0	0.00	0	63.4	63.4	63.4
7-8 PM	1042	0.0	OFF	1042	0	0.00	0	64.5	64.5	64.5
8-9 PM	890	0.0	OFF	890	0	0.00	0	64.7	64.7	64.7
9-10 PM	672	0.0	OFF	672	0	0.00	0	65.1	65.1	65.1
10-11 PM	464	0.0	OFF	464	0	0.00	0	65.5	65.5	65.5
11PM-MID	316	0.0	OFF	316	0	0.00	0	65.8	65.8	65.8

"OFF" INDICATES NO ROAD WORK (ALL LANES OPEN TO TRAFFIC)

+ INDICATES QUEUEING EXCEEDS USER-SPECIFIED MAXIMUM LIMIT

*----- SITE BREAKDOWN DELAYS -----*	
BREAKDOWN DURATION (MINS)	0
RANGE OF QUEUE DELAY - MIN	0.0
(VEH-H) MAX	0.0
AV BREAKDOWNS PER DAY	0.00
AV QUEUE DELAY/DAY (VEH-H)	0.0
AV TOTAL DELAY/DAY (VEH-H)	0.0

*----- SITE ACCIDENT DELAYS -----*	
BREAKDOWN DURATION (MINS)	0
RANGE OF QUEUE DELAY - MIN	0
(VEH-H) MAX	0
AV BREAKDOWNS PER DAY	0
AV QUEUE DELAY/DAY (VEH-H)	0
AV TOTAL DELAY/DAY (VEH-H)	0

AVERAGE ACCIDENT NUMBERS (PIA/DAY)	
MAIN ROUTE WITHOUT WORKS	0.0156
MAIN ROUTE WITH WORKS	0.0144
'DIVERSION'	0.0015

PIA: Personal Injury Accidents

ECONOMIC IMPACT ON ROAD USERS	
ROAD USER COSTS PER DAY	\$25,399
CONGESTED HOURS PER DAY*	4

\*Delays Exceeding User-Specified Maximum

**USH 41: STH 76 TO USH 45 (WINNEBAGO COUNTY)  
OFF-PEAK DAY CLOSURE  
NO DIVERSION ROUTE (MAX QUEUE METHOD)**

**OCTOBER**

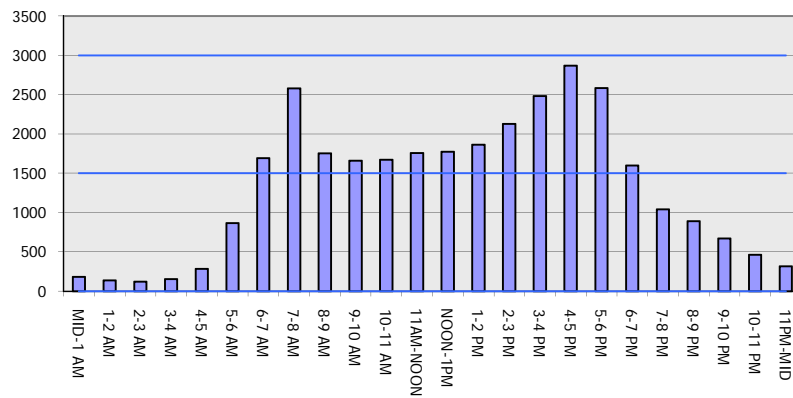
Analyzed for 2009  
Construction Season

**GRAPHICAL REPRESENTATION OF TRAFFIC MODEL INPUT AND OUTPUT**

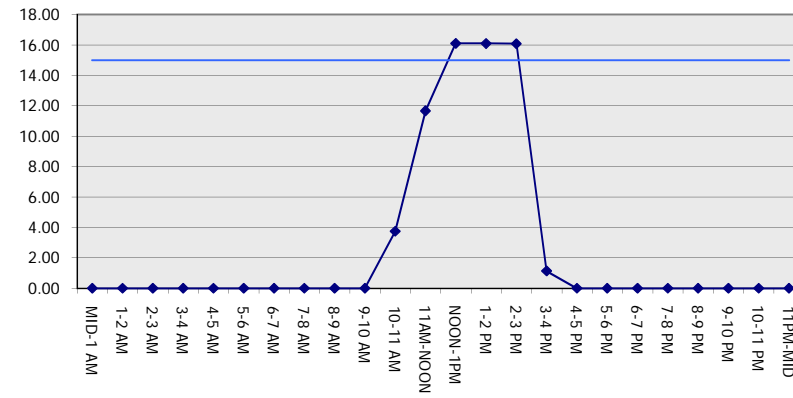
**MON-THUR**

**NORTHBOUND DIRECTION**

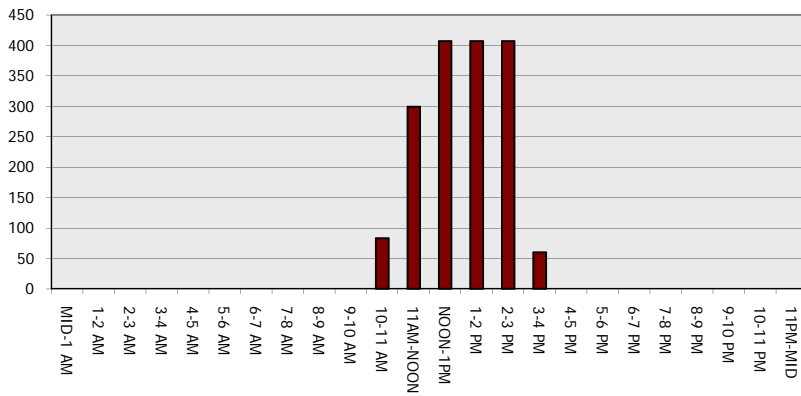
**Main Route - Traffic Demand (Vehicles Per Hour)**



**Main Route Average Delay Per Vehicle (Minutes)**



**Main Route - Average Queue Length (Vehicles)**



**Main Route - Average Speed (MPH)**

