

USH 41: STH 76 TO USH 45 (WINNEBAGO COUNTY) OFF-PEAK DAY CLOSURE NO DIVERSION ROUTE (MAX QUEUE METHOD)	OCTOBER
	Analyzed for 2009 Construction Season

SUMMARY OF TRAFFIC MODEL OUTPUT

FRIDAY SOUTHBOUND DIRECTION

TIME OF DAY	FLOWS AND CAPACITY IN VEH/HR						AVERAGE SPEEDS IN MPH				
	MAIN ROUTE		SITE CAPA CITY	FLOW		AV.DEL PER VEH (MINS)	AVERAGE QUEUE (VEH)	MAIN ROUTE		SITE	
	DEMAND FLOW	PCT HEAVY		MAIN ROUTE	'DIVER TED'			WITHOUT WORK ZONE	WITH WORK ZONE		
MID-1 AM	185	0.0	OFF	185	0	0.00	0	66.0	66.0	66.0	
1-2 AM	144	0.0	OFF	144	0	0.00	0	66.1	66.1	66.1	
2-3 AM	163	0.0	OFF	163	0	0.00	0	66.1	66.1	66.1	
3-4 AM	189	0.0	OFF	189	0	0.00	0	66.0	66.0	66.0	
4-5 AM	329	0.0	OFF	329	0	0.00	0	65.8	65.8	65.8	
5-6 AM	814	0.0	OFF	814	0	0.00	0	64.9	64.9	64.9	
6-7 AM	1589	0.0	OFF	1589	0	0.00	0	63.4	63.4	63.4	
7-8 AM	2271	0.0	OFF	2271	0	0.00	0	62.2	62.2	62.2	
8-9 AM	1812	0.0	OFF	1812	0	0.00	0	63.0	63.0	63.0	
9-10 AM	1592	0.0	OFF	1592	0	0.00	0	63.4	63.4	63.4	
10-11 AM	1712	0.0	1499	1712	0	4.13	98	63.2	26.3	30.8	
11AM-NOON	1836	0.0	1500	1653	184	13.53+	346	63.0	11.6	30.8	
NOON-1PM	2018	0.0	1500	1502	516	16.09+	407	62.6	10.4	30.8	
1-2 PM	2122	0.0	1500	1502	620	16.09+	407	62.4	10.4	30.8	
2-3 PM	2325	0.0	1500	1503	823	16.08+	408	62.0	10.4	30.8	
3-4 PM	2560	0.0	OFF	2560	0	0.93	47	60.3	46.3	46.3	
4-5 PM	2740	0.0	OFF	2740	0	0.00	0	58.4	58.4	58.4	
5-6 PM	2417	0.0	OFF	2417	0	0.00	0	61.7	61.7	61.7	
6-7 PM	1675	0.0	OFF	1675	0	0.00	0	63.3	63.3	63.3	
7-8 PM	1109	0.0	OFF	1109	0	0.00	0	64.3	64.3	64.3	
8-9 PM	956	0.0	OFF	956	0	0.00	0	64.6	64.6	64.6	
9-10 PM	831	0.0	OFF	831	0	0.00	0	64.8	64.8	64.8	
10-11 PM	661	0.0	OFF	661	0	0.00	0	65.1	65.1	65.1	
11PM-MID	421	0.0	OFF	421	0	0.00	0	65.6	65.6	65.6	

"OFF" INDICATES NO ROAD WORK (ALL LANES OPEN TO TRAFFIC)

+ INDICATES QUEUEING EXCEEDS USER-SPECIFIED MAXIMUM LIMIT

----- SITE BREAKDOWN DELAYS -----	
BREAKDOWN DURATION (MINS)	0
RANGE OF QUEUE DELAY - MIN (VEH-H) MAX	0.0
AV BREAKDOWNS PER DAY	0.00
AV QUEUE DELAY/DAY (VEH-H)	0.0
AV TOTAL DELAY/DAY (VEH-H)	0.0

----- SITE ACCIDENT DELAYS -----	
BREAKDOWN DURATION (MINS)	0
RANGE OF QUEUE DELAY - MIN (VEH-H) MAX	0
AV BREAKDOWNS PER DAY	0
AV QUEUE DELAY/DAY (VEH-H)	0
AV TOTAL DELAY/DAY (VEH-H)	0

AVERAGE ACCIDENT NUMBERS (PIA/DAY)	
MAIN ROUTE WITHOUT WORKS	0.0160
MAIN ROUTE WITH WORKS	0.0144
'DIVERSION'	0.0024
<small>PIA: Personal Injury Accidents</small>	
IMPACTS ON ROAD USERS	
ROAD USER COSTS PER DAY	\$30,324
CONGESTED HOURS PER DAY*	4

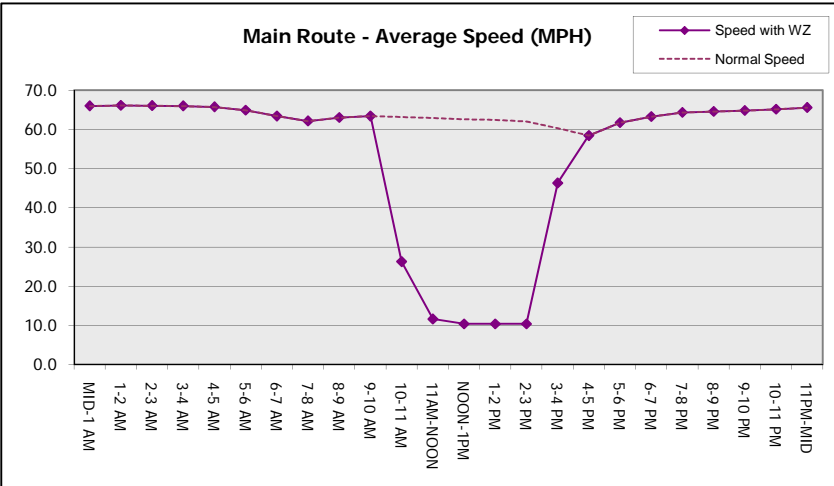
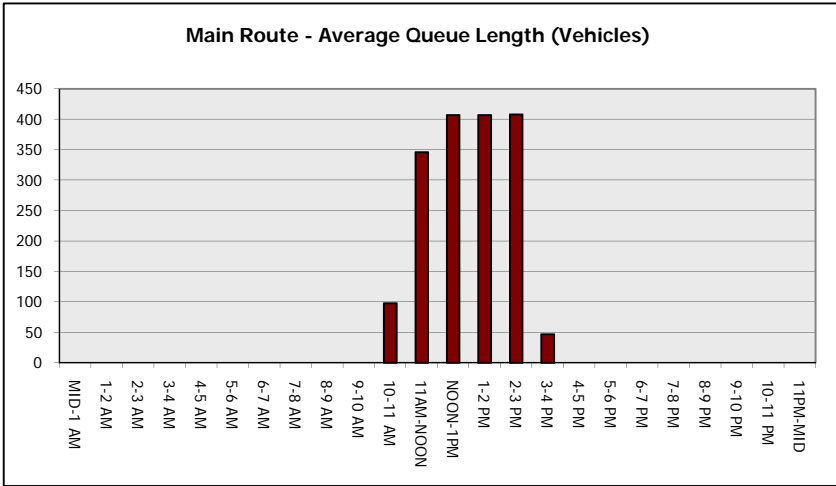
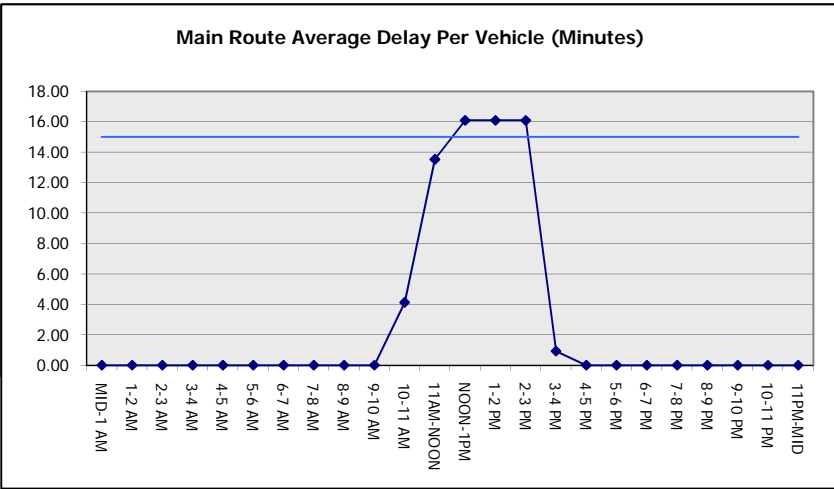
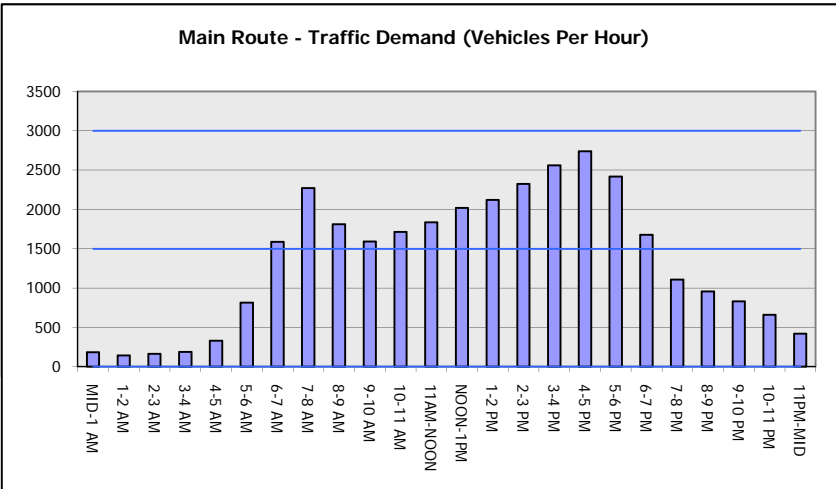
*Delays Exceeding User-Specified Maximum

**USH 41: STH 76 TO USH 45 (WINNEBAGO COUNTY)
OFF-PEAK DAY CLOSURE
NO DIVERSION ROUTE (MAX QUEUE METHOD)**

OCTOBER
Analyzed for 2009
Construction Season

GRAPHICAL REPRESENTATION OF TRAFFIC MODEL INPUT AND OUTPUT

FRIDAY SOUTHBOUND DIRECTION



USH 41: STH 76 TO USH 45 (WINNEBAGO COUNTY) OFF-PEAK DAY CLOSURE NO DIVERSION ROUTE (MAX QUEUE METHOD)	OCTOBER
	Analyzed for 2009 Construction Season

SUMMARY OF TRAFFIC MODEL OUTPUT

FRIDAY NORTHBOUND DIRECTION

TIME OF DAY	FLOWS AND CAPACITY IN VEH/HR						AVERAGE SPEEDS IN MPH			
	MAIN ROUTE		SITE CAPA CITY	FLOW		AV.DEL PER VEH (MINS)	AVERAGE QUEUE (VEH)	MAIN ROUTE		SITE
	DEMAND FLOW	PCT HEAVY		MAIN ROUTE	'DIVER TED'			WITHOUT WORK ZONE	WITH WORK ZONE	
MID-1 AM	229	0.0	OFF	229	0	0.00	0	66.0	66.0	66.0
1-2 AM	178	0.0	OFF	178	0	0.00	0	66.1	66.1	66.1
2-3 AM	160	0.0	OFF	160	0	0.00	0	66.1	66.1	66.1
3-4 AM	180	0.0	OFF	180	0	0.00	0	66.1	66.1	66.1
4-5 AM	293	0.0	OFF	293	0	0.00	0	65.8	65.8	65.8
5-6 AM	782	0.0	OFF	782	0	0.00	0	65.0	65.0	65.0
6-7 AM	1569	0.0	OFF	1569	0	0.00	0	63.5	63.5	63.5
7-8 AM	2430	0.0	OFF	2430	0	0.00	0	61.6	61.6	61.6
8-9 AM	1738	0.0	OFF	1738	0	0.00	0	63.2	63.2	63.2
9-10 AM	1846	0.0	OFF	1846	0	0.00	0	63.0	63.0	63.0
10-11 AM	2043	0.0	1499	1974	69	8.50+	246	62.6	16.5	30.8
11AM-NOON	2292	0.0	1500	1494	798	16.09+	408	62.1	10.4	30.8
NOON-1PM	2347	0.0	1499	1494	853	16.09+	408	62.0	10.3	30.8
1-2 PM	2620	0.0	1499	1488	1132	16.01+	409	59.7	10.3	30.8
2-3 PM	2860	0.0	1499	1484	1375	15.90+	410	57.2	10.3	30.8
3-4 PM	3166	0.0	OFF	3166	0	2.00	113	54.1	34.2	34.2
4-5 PM	3354	0.0	OFF	3354	0	0.00	0	52.2	52.2	52.2
5-6 PM	3280	0.0	OFF	3280	0	0.00	0	52.9	52.9	52.9
6-7 PM	2461	0.0	OFF	2461	0	0.00	0	61.3	61.3	61.3
7-8 PM	1673	0.0	OFF	1673	0	0.00	0	63.3	63.3	63.3
8-9 PM	1254	0.0	OFF	1254	0	0.00	0	64.0	64.0	64.0
9-10 PM	1017	0.0	OFF	1017	0	0.00	0	64.5	64.5	64.5
10-11 PM	653	0.0	OFF	653	0	0.00	0	65.1	65.1	65.1
11PM-MID	483	0.0	OFF	483	0	0.00	0	65.5	65.5	65.5

"OFF" INDICATES NO ROAD WORK (ALL LANES OPEN TO TRAFFIC)

+ INDICATES QUEUEING EXCEEDS USER-SPECIFIED MAXIMUM LIMIT

----- SITE BREAKDOWN DELAYS -----	
BREAKDOWN DURATION (MINS)	0
RANGE OF QUEUE DELAY - MIN	0.0
(VEH-H) MAX	0.0
AV BREAKDOWNS PER DAY	0.00
AV QUEUE DELAY/DAY (VEH-H)	0.0
AV TOTAL DELAY/DAY (VEH-H)	0.0

----- SITE ACCIDENT DELAYS -----	
BREAKDOWN DURATION (MINS)	0
RANGE OF QUEUE DELAY - MIN	0
(VEH-H) MAX	0
AV BREAKDOWNS PER DAY	0
AV QUEUE DELAY/DAY (VEH-H)	0
AV TOTAL DELAY/DAY (VEH-H)	0

AVERAGE ACCIDENT NUMBERS (PIA/DAY)	
MAIN ROUTE WITHOUT WORKS	0.0192
MAIN ROUTE WITH WORKS	0.0166
'DIVERSION'	0.0048

PIA: Personal Injury Accidents

ECONOMIC IMPACT ON ROAD USERS	
ROAD USER COSTS PER DAY	\$40,733
CONGESTED HOURS PER DAY*	5

*Delays Exceeding User-Specified Maximum

**USH 41: STH 76 TO USH 45 (WINNEBAGO COUNTY)
OFF-PEAK DAY CLOSURE
NO DIVERSION ROUTE (MAX QUEUE METHOD)**

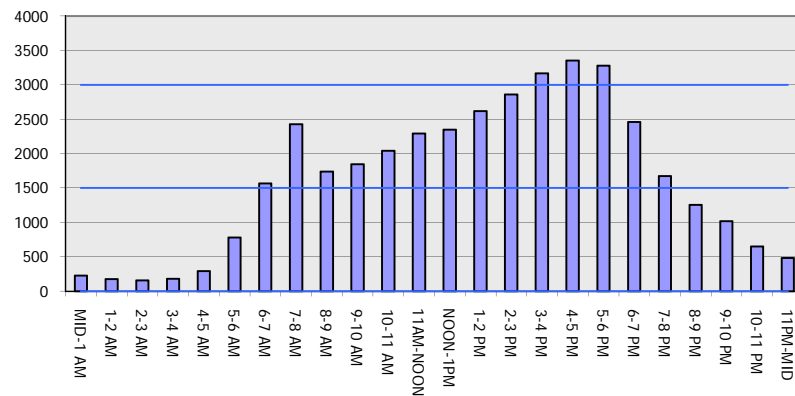
OCTOBER

Analyzed for 2009
Construction Season

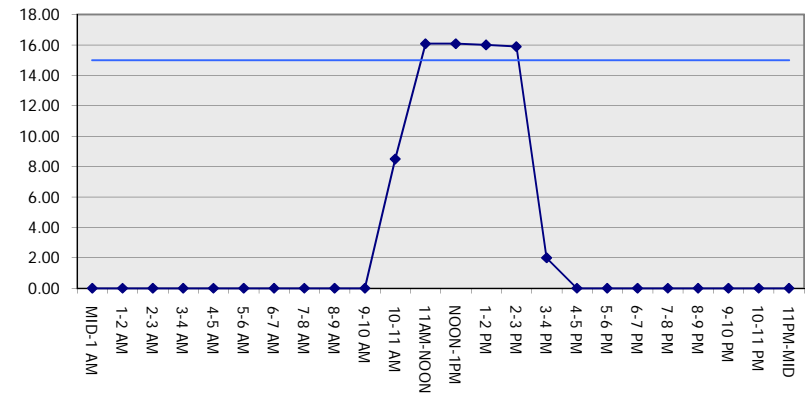
GRAPHICAL REPRESENTATION OF TRAFFIC MODEL INPUT AND OUTPUT

FRIDAY NORTHBOUND DIRECTION

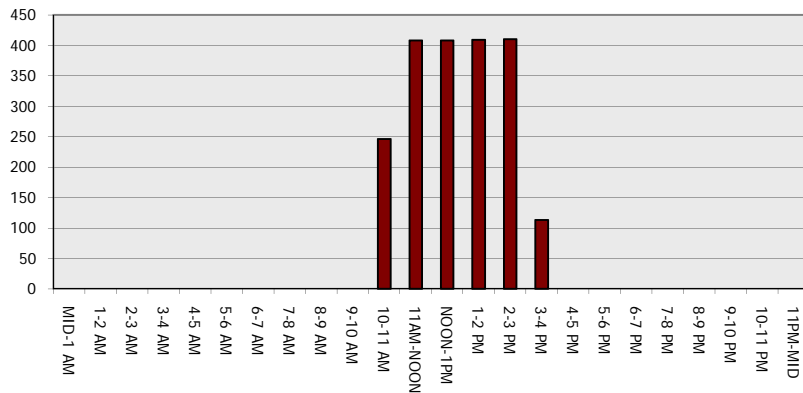
Main Route - Traffic Demand (Vehicles Per Hour)



Main Route Average Delay Per Vehicle (Minutes)



Main Route - Average Queue Length (Vehicles)



Main Route - Average Speed (MPH)

