

<b>USH 41: STH 76 TO USH 45 (WINNEBAGO COUNTY)</b> <b>OFF-PEAK DAY CLOSURE</b> <b>NO DIVERSION ROUTE (MAX QUEUE METHOD)</b>	<b>AUGUST</b>
	Analyzed for 2009 Construction Season

**SUMMARY OF TRAFFIC MODEL OUTPUT**

FRIDAY                  SOUTHBOUND DIRECTION

TIME OF DAY	FLOWS AND CAPACITY IN VEH/HR						AVERAGE SPEEDS IN MPH			
	MAIN ROUTE		SITE CAPA CITY	FLOW		AV.DEL PER VEH (MINS)	AVERAGE QUEUE (VEH)	MAIN ROUTE		SITE
	DEMAND FLOW	PCT HEAVY		MAIN ROUTE	'DIVER TED'			WITHOUT WORK ZONE	WITH WORK ZONE	
MID-1 AM	294	0.0	OFF	294	0	0.00	0	65.8	65.8	65.8
1-2 AM	185	0.0	OFF	185	0	0.00	0	66.0	66.0	66.0
2-3 AM	174	0.0	OFF	174	0	0.00	0	66.1	66.1	66.1
3-4 AM	203	0.0	OFF	203	0	0.00	0	66.0	66.0	66.0
4-5 AM	331	0.0	OFF	331	0	0.00	0	65.8	65.8	65.8
5-6 AM	777	0.0	OFF	777	0	0.00	0	65.0	65.0	65.0
6-7 AM	1490	0.0	OFF	1490	0	0.00	0	63.6	63.6	63.6
7-8 AM	2014	0.0	OFF	2014	0	0.00	0	62.7	62.7	62.7
8-9 AM	1751	0.0	OFF	1751	0	0.00	0	63.1	63.1	63.1
9-10 AM	1717	0.0	OFF	1717	0	0.00	0	63.2	63.2	63.2
10-11 AM	1844	0.0	2000	1844	0	1.22	0	63.0	44.6	27.9
11AM-NOON	1961	0.0	1999	1961	0	1.21	0	62.7	44.5	27.9
NOON-1PM	2063	0.0	1999	2063	0	1.83	24	62.5	38.7	27.9
1-2 PM	2187	0.0	2000	2187	0	4.92	145	62.3	23.5	27.9
2-3 PM	2414	0.0	2000	2346	68	12.63+	436	61.8	12.9	27.9
3-4 PM	2548	0.0	OFF	2548	0	2.18	122	60.4	35.3	35.3
4-5 PM	2637	0.0	OFF	2637	0	0.00	0	59.5	59.5	59.5
5-6 PM	2174	0.0	OFF	2174	0	0.00	0	62.3	62.3	62.3
6-7 PM	1627	0.0	OFF	1627	0	0.00	0	63.3	63.3	63.3
7-8 PM	1143	0.0	OFF	1143	0	0.00	0	64.3	64.3	64.3
8-9 PM	957	0.0	OFF	957	0	0.00	0	64.6	64.6	64.6
9-10 PM	856	0.0	OFF	856	0	0.00	0	64.8	64.8	64.8
10-11 PM	766	0.0	OFF	766	0	0.00	0	65.0	65.0	65.0
11PM-MID	491	0.0	OFF	491	0	0.00	0	65.5	65.5	65.5

"OFF" INDICATES NO ROAD WORK (ALL LANES OPEN TO TRAFFIC)

+ INDICATES QUEUEING EXCEEDS USER-SPECIFIED MAXIMUM LIMIT

*----- SITE BREAKDOWN DELAYS -----*	
BREAKDOWN DURATION (MINS)	0
RANGE OF QUEUE DELAY - MIN (VEH-H) MAX	0.0
AV BREAKDOWNS PER DAY	0.00
AV QUEUE DELAY/DAY (VEH-H)	0.0
AV TOTAL DELAY/DAY (VEH-H)	0.0

*----- SITE ACCIDENT DELAYS -----*	
BREAKDOWN DURATION (MINS)	0
RANGE OF QUEUE DELAY - MIN (VEH-H) MAX	0
AV BREAKDOWNS PER DAY	0
AV QUEUE DELAY/DAY (VEH-H)	0
AV TOTAL DELAY/DAY (VEH-H)	0

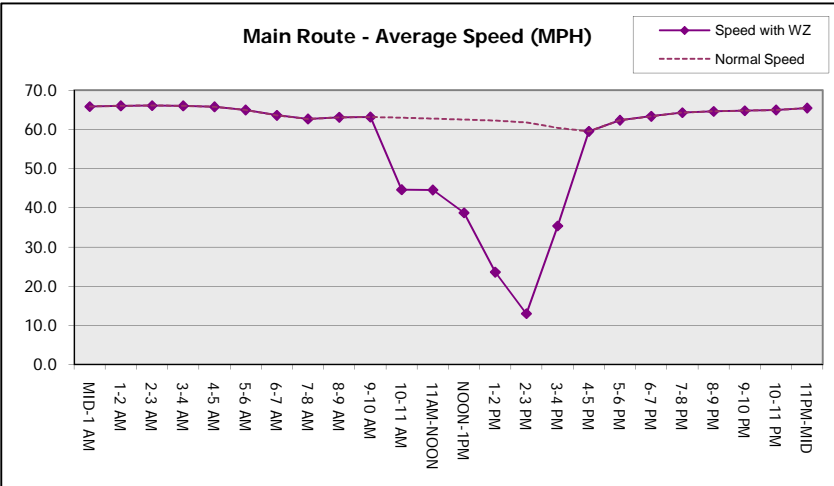
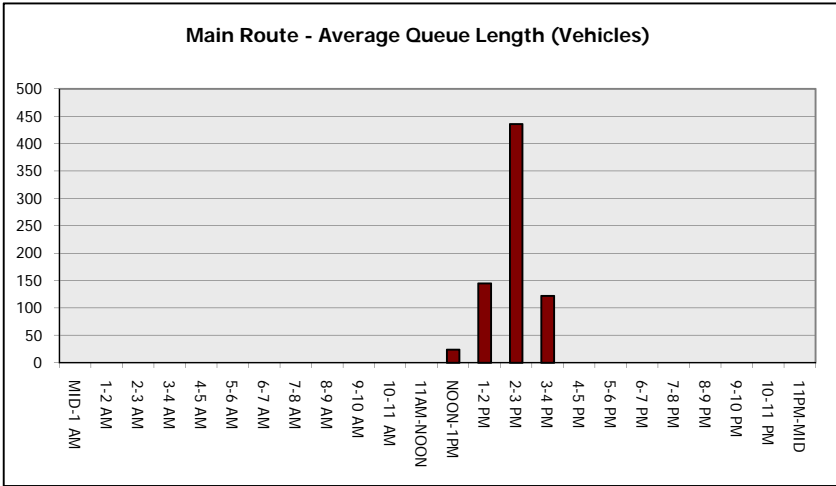
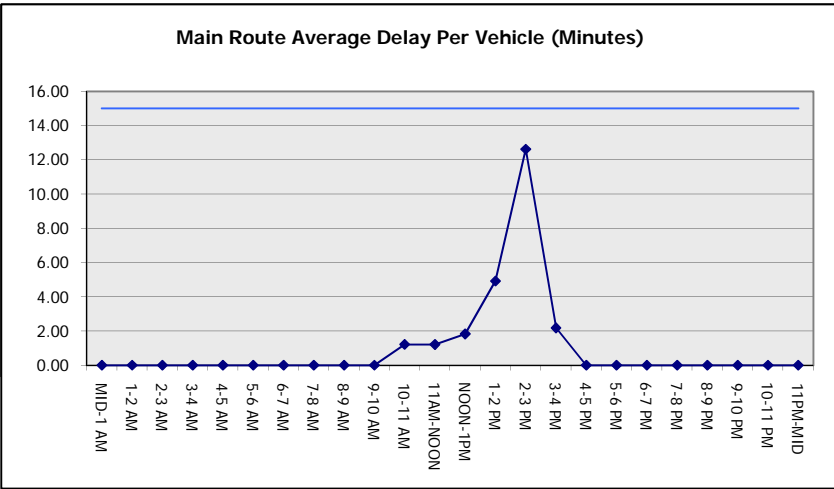
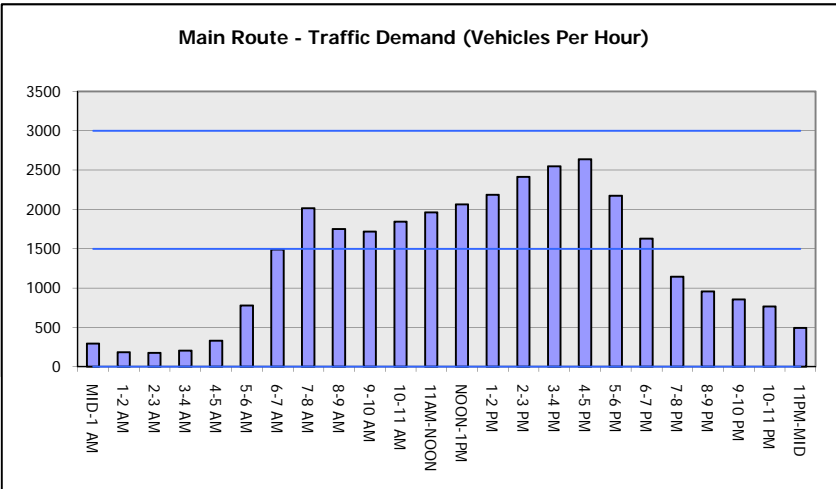
AVERAGE ACCIDENT NUMBERS (PIA/DAY)	
MAIN ROUTE WITHOUT WORKS	0.0161
MAIN ROUTE WITH WORKS	0.0154
'DIVERSION'	0.0001
<small>PIA: Personal Injury Accidents</small>	
IMPACTS ON ROAD USERS	
ROAD USER COSTS PER DAY	\$10,892
CONGESTED HOURS PER DAY*	1

\*Delays Exceeding User-Specified Maximum

**USH 41: STH 76 TO USH 45 (WINNEBAGO COUNTY)  
OFF-PEAK DAY CLOSURE  
NO DIVERSION ROUTE (MAX QUEUE METHOD)**

**AUGUST**  
Analyzed for 2009  
Construction Season

**GRAPHICAL REPRESENTATION OF TRAFFIC MODEL INPUT AND OUTPUT**  
**FRIDAY SOUTHBOUND DIRECTION**



<b>USH 41: STH 76 TO USH 45 (WINNEBAGO COUNTY)</b> <b>OFF-PEAK DAY CLOSURE</b> <b>NO DIVERSION ROUTE (MAX QUEUE METHOD)</b>	<b>AUGUST</b>
	Analyzed for 2009 Construction Season

**SUMMARY OF TRAFFIC MODEL OUTPUT**

FRIDAY      NORTHBOUND DIRECTION

TIME OF DAY	FLOWS AND CAPACITY IN VEH/HR						AVERAGE SPEEDS IN MPH			
	MAIN ROUTE		SITE CAPA CITY	FLOW		AV.DEL PER VEH (MINS)	AVERAGE QUEUE (VEH)	MAIN ROUTE		SITE
	DEMAND FLOW	PCT HEAVY		MAIN ROUTE	'DIVER TED'			WITHOUT WORK ZONE	WITH WORK ZONE	
MID-1 AM	278	0.0	OFF	278	0	0.00	0	65.9	65.9	65.9
1-2 AM	182	0.0	OFF	182	0	0.00	0	66.1	66.1	66.1
2-3 AM	173	0.0	OFF	173	0	0.00	0	66.1	66.1	66.1
3-4 AM	190	0.0	OFF	190	0	0.00	0	66.0	66.0	66.0
4-5 AM	301	0.0	OFF	301	0	0.00	0	65.8	65.8	65.8
5-6 AM	854	0.0	OFF	854	0	0.00	0	64.8	64.8	64.8
6-7 AM	1549	0.0	OFF	1549	0	0.00	0	63.5	63.5	63.5
7-8 AM	2258	0.0	OFF	2258	0	0.00	0	62.2	62.2	62.2
8-9 AM	1809	0.0	OFF	1809	0	0.00	0	63.0	63.0	63.0
9-10 AM	1904	0.0	OFF	1904	0	0.00	0	62.8	62.8	62.8
10-11 AM	2132	0.0	1999	2132	0	2.52	53	62.4	33.8	27.9
11AM-NOON	2288	0.0	2000	2288	0	8.03	266	62.1	17.0	27.9
NOON-1PM	2422	0.0	2000	2187	235	15.74+	541	61.7	11.6	27.9
1-2 PM	2592	0.0	1999	1992	600	16.36+	566	59.9	11.4	27.9
2-3 PM	2815	0.0	1999	1994	822	16.23+	567	57.6	11.4	27.9
3-4 PM	3065	0.0	OFF	3065	0	3.24	187	55.1	28.1	28.1
4-5 PM	3183	0.0	OFF	3183	0	0.00	0	53.9	53.9	53.9
5-6 PM	3056	0.0	OFF	3056	0	0.00	0	55.2	55.2	55.2
6-7 PM	2556	0.0	OFF	2556	0	0.00	0	60.3	60.3	60.3
7-8 PM	1997	0.0	OFF	1997	0	0.00	0	62.7	62.7	62.7
8-9 PM	1468	0.0	OFF	1468	0	0.00	0	63.7	63.7	63.7
9-10 PM	1163	0.0	OFF	1163	0	0.00	0	64.2	64.2	64.2
10-11 PM	816	0.0	OFF	816	0	0.00	0	64.9	64.9	64.9
11PM-MID	646	0.0	OFF	646	0	0.00	0	65.2	65.2	65.2

"OFF" INDICATES NO ROAD WORK (ALL LANES OPEN TO TRAFFIC)

+ INDICATES QUEUEING EXCEEDS USER-SPECIFIED MAXIMUM LIMIT

BREAKDOWN DURATION (MINS)	0
RANGE OF QUEUE DELAY - MIN (VEH-H) MAX	0.0
AV BREAKDOWNS PER DAY	0.00
AV QUEUE DELAY/DAY (VEH-H)	0.0
AV TOTAL DELAY/DAY (VEH-H)	0.0

BREAKDOWN DURATION (MINS)	0
RANGE OF QUEUE DELAY - MIN (VEH-H) MAX	0
AV BREAKDOWNS PER DAY	0
AV QUEUE DELAY/DAY (VEH-H)	0
AV TOTAL DELAY/DAY (VEH-H)	0

MAIN ROUTE WITHOUT WORKS	0.0196
MAIN ROUTE WITH WORKS	0.0181
'DIVERSION'	0.0019

PIA: Personal Injury Accidents

ROAD USER COSTS PER DAY	\$31,548
CONGESTED HOURS PER DAY*	3

\*Delays Exceeding User-Specified Maximum

**USH 41: STH 76 TO USH 45 (WINNEBAGO COUNTY)  
OFF-PEAK DAY CLOSURE  
NO DIVERSION ROUTE (MAX QUEUE METHOD)**

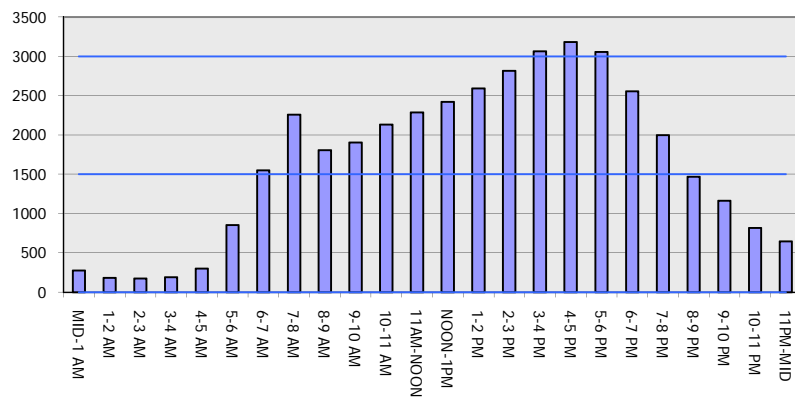
**AUGUST**

Analyzed for 2009  
Construction Season

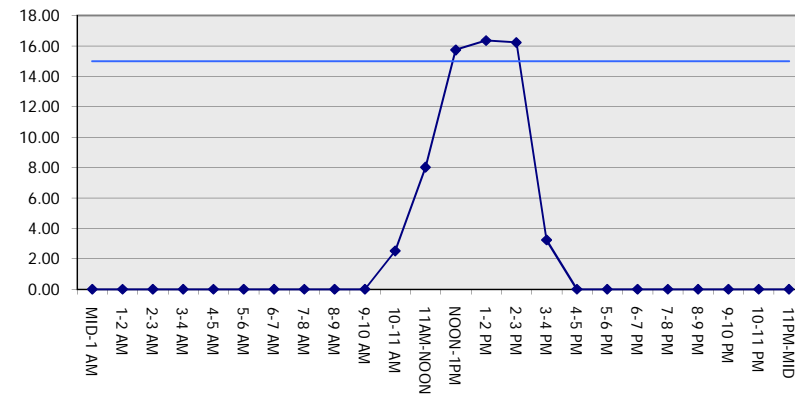
**GRAPHICAL REPRESENTATION OF TRAFFIC MODEL INPUT AND OUTPUT**

**FRIDAY NORTHBOUND DIRECTION**

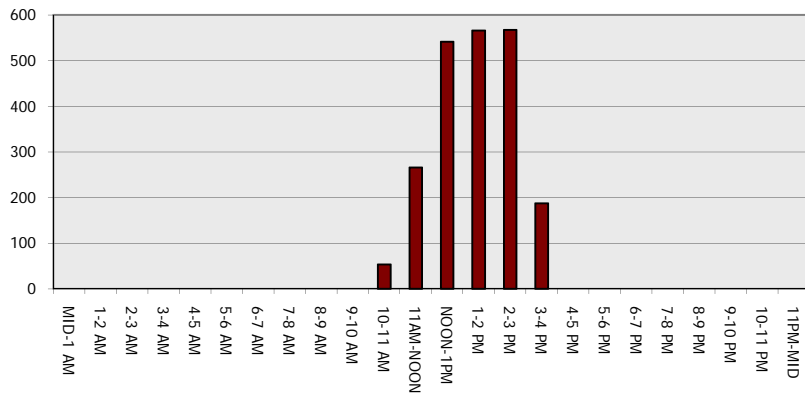
**Main Route - Traffic Demand (Vehicles Per Hour)**



**Main Route Average Delay Per Vehicle (Minutes)**



**Main Route - Average Queue Length (Vehicles)**



**Main Route - Average Speed (MPH)**

