

USH 41: 9TH AVE TO STH 44 (WINNEBAGO COUNTY) OFF-PEAK DAY CLOSURE NO DIVERSION ROUTE (MAX QUEUE METHOD)	OCTOBER
	Analyzed for 2009 Construction Season

SUMMARY OF TRAFFIC MODEL OUTPUT

SUNDAY SOUTHBOUND DIRECTION

TIME OF DAY	FLOWS AND CAPACITY IN VEH/HR						AVERAGE SPEEDS IN MPH			
	MAIN ROUTE		SITE CAPA CITY	FLOW		AV.DEL PER VEH (MINS)	AVERAGE QUEUE (VEH)	MAIN ROUTE		SITE
	DEMAND FLOW	PCT HEAVY		MAIN ROUTE	'DIVER TED'			WITHOUT WORK ZONE	WITH WORK ZONE	
MID-1 AM	277	0.0	OFF	277	0	0.00	0	65.9	65.9	65.9
1-2 AM	171	0.0	OFF	171	0	0.00	0	66.1	66.1	66.1
2-3 AM	149	0.0	OFF	149	0	0.00	0	66.1	66.1	66.1
3-4 AM	125	0.0	OFF	125	0	0.00	0	66.1	66.1	66.1
4-5 AM	136	0.0	OFF	136	0	0.00	0	66.1	66.1	66.1
5-6 AM	211	0.0	OFF	211	0	0.00	0	66.0	66.0	66.0
6-7 AM	336	0.0	OFF	336	0	0.00	0	65.8	65.8	65.8
7-8 AM	489	0.0	OFF	489	0	0.00	0	65.5	65.5	65.5
8-9 AM	791	0.0	OFF	791	0	0.00	0	64.9	64.9	64.9
9-10 AM	1194	0.0	1499	1194	0	0.65	0	64.1	42.9	38.3
10-11 AM	1765	0.0	1499	1765	0	3.95	102	63.1	17.3	30.8
11AM-NOON	2154	0.0	1500	1728	427	16.40+	418	62.3	8.0	30.8
NOON-1PM	2266	0.0	1499	1487	778	17.34+	441	62.2	7.8	30.8
1-2 PM	2312	0.0	1499	1491	821	17.35+	441	62.1	7.8	30.8
2-3 PM	2601	0.0	1499	1480	1122	17.39+	445	59.9	7.8	30.8
3-4 PM	2664	0.0	1499	1495	1169	17.35+	445	59.2	7.8	30.8
4-5 PM	2622	0.0	1500	1499	1122	17.32+	443	59.6	7.8	30.8
5-6 PM	2375	0.0	1500	1499	875	17.35+	442	62.0	7.8	30.8
6-7 PM	1966	0.0	1500	1499	467	17.32+	440	62.7	7.8	30.8
7-8 PM	1429	0.0	OFF	1429	0	0.59	38	63.7	44.0	44.0
8-9 PM	910	0.0	OFF	910	0	0.00	0	64.7	64.7	64.7
9-10 PM	591	0.0	OFF	591	0	0.00	0	65.3	65.3	65.3
10-11 PM	436	0.0	OFF	436	0	0.00	0	65.6	65.6	65.6
11PM-MID	407	0.0	OFF	407	0	0.00	0	65.6	65.6	65.6

"OFF" INDICATES NO ROAD WORK (ALL LANES OPEN TO TRAFFIC)

+ INDICATES QUEUEING EXCEEDS USER-SPECIFIED MAXIMUM LIMIT

----- SITE BREAKDOWN DELAYS -----	
BREAKDOWN DURATION (MINS)	0
RANGE OF QUEUE DELAY - MIN	0.0
(VEH-H) MAX	0.0
AV BREAKDOWNS PER DAY	0.00
AV QUEUE DELAY/DAY (VEH-H)	0.0
AV TOTAL DELAY/DAY (VEH-H)	0.0

----- SITE ACCIDENT DELAYS -----	
BREAKDOWN DURATION (MINS)	0
RANGE OF QUEUE DELAY - MIN	0
(VEH-H) MAX	0
AV BREAKDOWNS PER DAY	0
AV QUEUE DELAY/DAY (VEH-H)	0
AV TOTAL DELAY/DAY (VEH-H)	0

AVERAGE ACCIDENT NUMBERS (PIA/DAY)	
MAIN ROUTE WITHOUT WORKS	0.0063
MAIN ROUTE WITH WORKS	0.0038
'DIVERSION'	0.0035
PIA: Personal Injury Accidents	
IMPACTS ON ROAD USERS	
ROAD USER COSTS PER DAY	\$92,940
CONGESTED HOURS PER DAY*	8

*Delays Exceeding User-Specified Maximum

**USH 41: 9TH AVE TO STH 44 (WINNEBAGO COUNTY)
OFF-PEAK DAY CLOSURE
NO DIVERSION ROUTE (MAX QUEUE METHOD)**

OCTOBER

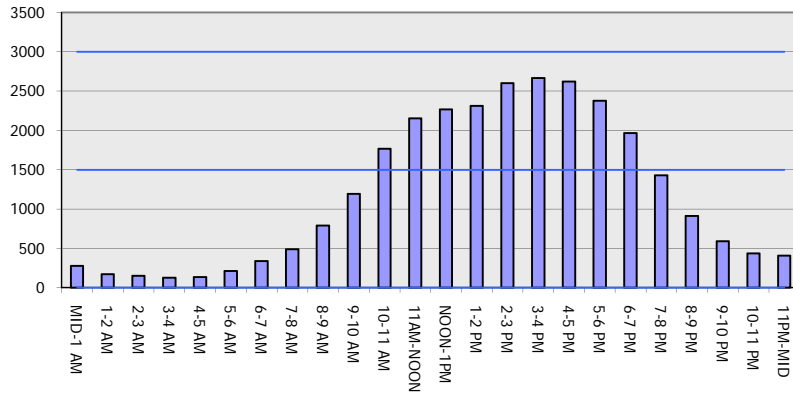
Analyzed for 2009
Construction Season

GRAPHICAL REPRESENTATION OF TRAFFIC MODEL INPUT AND OUTPUT

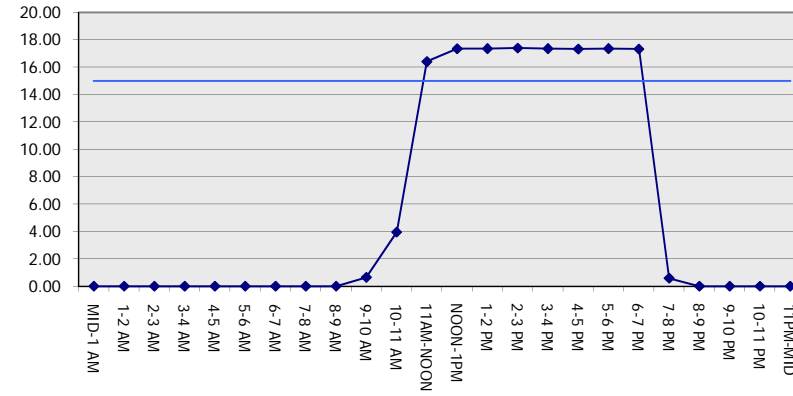
SUNDAY

SOUTHBOUND DIRECTION

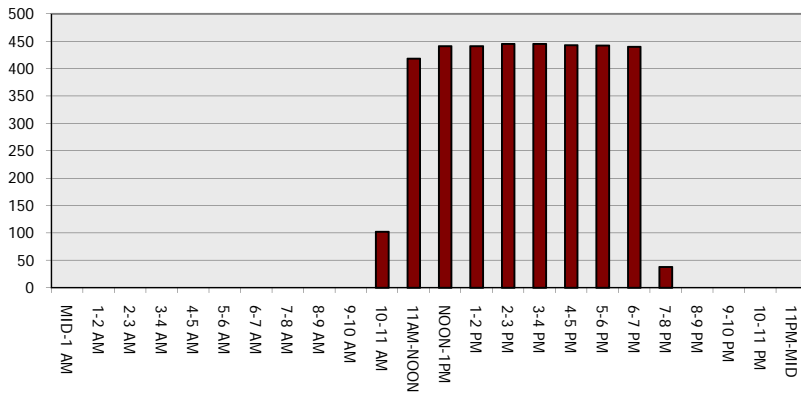
Main Route - Traffic Demand (Vehicles Per Hour)



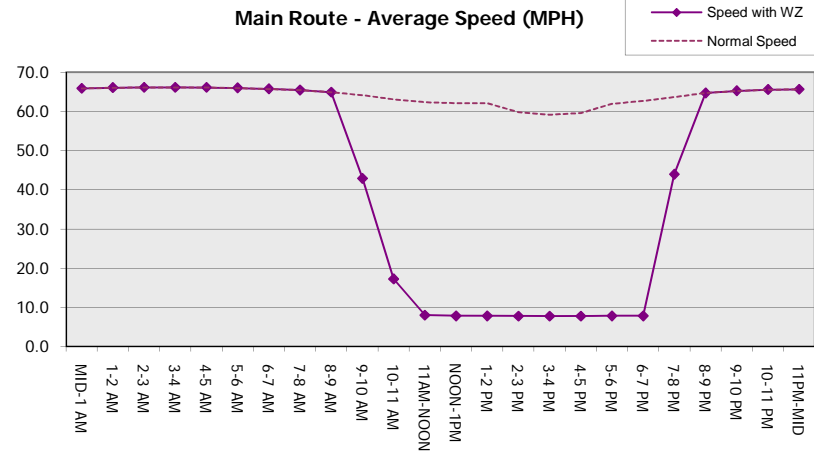
Main Route Average Delay Per Vehicle (Minutes)



Main Route - Average Queue Length (Vehicles)



Main Route - Average Speed (MPH)



USH 41: 9TH AVE TO STH 44 (WINNEBAGO COUNTY) OFF-PEAK DAY CLOSURE NO DIVERSION ROUTE (MAX QUEUE METHOD)	OCTOBER
	Analyzed for 2009 Construction Season

SUMMARY OF TRAFFIC MODEL OUTPUT

SUNDAY NORTHBOUND DIRECTION

TIME OF DAY	FLOWS AND CAPACITY IN VEH/HR							AVERAGE SPEEDS IN MPH		
	MAIN ROUTE		SITE CAPA CITY	FLOW		AV.DEL PER VEH (MINS)	AVERAGE QUEUE (VEH)	MAIN ROUTE		SITE
	DEMAND FLOW	PCT HEAVY		MAIN ROUTE	'DIVER TED'			WITHOUT WORK ZONE	WITH WORK ZONE	
MID-1 AM	229	0.0	OFF	229	0	0.00	0	66.0	66.0	66.0
1-2 AM	153	0.0	OFF	153	0	0.00	0	66.1	66.1	66.1
2-3 AM	114	0.0	OFF	114	0	0.00	0	66.2	66.2	66.2
3-4 AM	85	0.0	OFF	85	0	0.00	0	66.2	66.2	66.2
4-5 AM	96	0.0	OFF	96	0	0.00	0	66.2	66.2	66.2
5-6 AM	217	0.0	OFF	217	0	0.00	0	66.0	66.0	66.0
6-7 AM	261	0.0	OFF	261	0	0.00	0	65.9	65.9	65.9
7-8 AM	417	0.0	OFF	417	0	0.00	0	65.6	65.6	65.6
8-9 AM	914	0.0	OFF	914	0	0.00	0	64.7	64.7	64.7
9-10 AM	1247	0.0	1500	1247	0	0.70	0	64.1	41.8	37.0
10-11 AM	1390	0.0	1499	1390	0	0.88	0	63.8	38.2	33.2
11AM-NOON	1562	0.0	1499	1562	0	1.69	20	63.5	27.8	30.8
NOON-1PM	1707	0.0	1500	1707	0	6.61	160	63.2	12.4	30.8
1-2 PM	1709	0.0	1499	1687	22	14.53+	368	63.2	8.4	30.8
2-3 PM	1763	0.0	1500	1496	267	17.31+	439	63.1	7.8	30.8
3-4 PM	1844	0.0	1499	1497	346	17.31+	440	63.0	7.8	30.8
4-5 PM	1747	0.0	1499	1498	249	17.30+	439	63.2	7.8	30.8
5-6 PM	1575	0.0	1499	1490	85	17.26+	438	63.5	7.8	30.8
6-7 PM	1350	0.0	1499	1350	0	14.93+	376	63.9	8.3	30.8
7-8 PM	1090	0.0	OFF	1090	0	0.22	14	64.3	55.0	55.0
8-9 PM	727	0.0	OFF	727	0	0.00	0	65.0	65.0	65.0
9-10 PM	539	0.0	OFF	539	0	0.00	0	65.4	65.4	65.4
10-11 PM	389	0.0	OFF	389	0	0.00	0	65.6	65.6	65.6
11PM-MID	221	0.0	OFF	221	0	0.00	0	66.0	66.0	66.0

"OFF" INDICATES NO ROAD WORK (ALL LANES OPEN TO TRAFFIC)

+ INDICATES QUEUEING EXCEEDS USER-SPECIFIED MAXIMUM LIMIT

----- SITE BREAKDOWN DELAYS -----	
BREAKDOWN DURATION (MINS)	0
RANGE OF QUEUE DELAY - MIN (VEH-H) MAX	0.0
AV BREAKDOWNS PER DAY	0.00
AV QUEUE DELAY/DAY (VEH-H)	0.0
AV TOTAL DELAY/DAY (VEH-H)	0.0

----- SITE ACCIDENT DELAYS -----	
BREAKDOWN DURATION (MINS)	0
RANGE OF QUEUE DELAY - MIN (VEH-H) MAX	0
AV BREAKDOWNS PER DAY	0
AV QUEUE DELAY/DAY (VEH-H)	0
AV TOTAL DELAY/DAY (VEH-H)	0

AVERAGE ACCIDENT NUMBERS (PIA/DAY)	
MAIN ROUTE WITHOUT WORKS	0.0047
MAIN ROUTE WITH WORKS	0.0035
'DIVERSION'	0.0005

PIA: Personal Injury Accidents

ECONOMIC IMPACT ON ROAD USERS	
ROAD USER COSTS PER DAY	\$50,174
CONGESTED HOURS PER DAY*	6

*Delays Exceeding User-Specified Maximum

**USH 41: 9TH AVE TO STH 44 (WINNEBAGO COUNTY)
OFF-PEAK DAY CLOSURE
NO DIVERSION ROUTE (MAX QUEUE METHOD)**

OCTOBER

Analyzed for 2009
Construction Season

GRAPHICAL REPRESENTATION OF TRAFFIC MODEL INPUT AND OUTPUT
SUNDAY NORTHBOUND DIRECTION

