

USH 41: 9TH AVE TO STH 44 (WINNEBAGO COUNTY) OFF-PEAK DAY CLOSURE NO DIVERSION ROUTE (MAX QUEUE METHOD)	OCTOBER
	Analyzed for 2009 Construction Season

SUMMARY OF TRAFFIC MODEL OUTPUT

SATURDAY SOUTHBOUND DIRECTION

TIME OF DAY	FLOWS AND CAPACITY IN VEH/HR						AVERAGE SPEEDS IN MPH				
	MAIN ROUTE		SITE CAPA CITY	FLOW		AV.DEL PER VEH (MINS)	AVERAGE QUEUE (VEH)	MAIN ROUTE		SITE	
	DEMAND FLOW	PCT HEAVY		MAIN ROUTE	'DIVER TED'			WITHOUT WORK ZONE	WITH WORK ZONE		
MID-1 AM	233	0.0	OFF	233	0	0.00	0	66.0	66.0	66.0	
1-2 AM	161	0.0	OFF	161	0	0.00	0	66.1	66.1	66.1	
2-3 AM	144	0.0	OFF	144	0	0.00	0	66.1	66.1	66.1	
3-4 AM	134	0.0	OFF	134	0	0.00	0	66.1	66.1	66.1	
4-5 AM	216	0.0	OFF	216	0	0.00	0	66.0	66.0	66.0	
5-6 AM	378	0.0	OFF	378	0	0.00	0	65.7	65.7	65.7	
6-7 AM	702	0.0	OFF	702	0	0.00	0	65.1	65.1	65.1	
7-8 AM	1216	0.0	OFF	1216	0	0.00	0	64.1	64.1	64.1	
8-9 AM	1448	0.0	1499	1448	0	0.96	0	63.7	36.8	31.9	
9-10 AM	1644	0.0	1500	1644	0	2.91	61	63.3	20.4	30.8	
10-11 AM	1825	0.0	1500	1825	0	11.75+	302	63.0	9.3	30.8	
11AM-NOON	1809	0.0	1499	1493	316	17.31+	439	63.0	7.8	30.8	
NOON-1PM	1836	0.0	1499	1495	342	17.31+	440	63.0	7.8	30.8	
1-2 PM	1725	0.0	1499	1496	229	17.30+	439	63.2	7.8	30.8	
2-3 PM	1733	0.0	1499	1497	237	17.30+	439	63.2	7.8	30.8	
3-4 PM	1721	0.0	1499	1498	224	17.30+	439	63.2	7.8	30.8	
4-5 PM	1725	0.0	1499	1498	227	17.30+	439	63.2	7.8	30.8	
5-6 PM	1590	0.0	1499	1497	94	17.29+	438	63.4	7.8	30.8	
6-7 PM	1377	0.0	OFF	1377	0	0.58	37	63.8	44.3	44.3	
7-8 PM	1133	0.0	OFF	1133	0	0.00	0	64.3	64.3	64.3	
8-9 PM	938	0.0	OFF	938	0	0.00	0	64.6	64.6	64.6	
9-10 PM	809	0.0	OFF	809	0	0.00	0	64.9	64.9	64.9	
10-11 PM	644	0.0	OFF	644	0	0.00	0	65.2	65.2	65.2	
11PM-MID	420	0.0	OFF	420	0	0.00	0	65.6	65.6	65.6	

"OFF" INDICATES NO ROAD WORK (ALL LANES OPEN TO TRAFFIC)

+ INDICATES QUEUEING EXCEEDS USER-SPECIFIED MAXIMUM LIMIT

----- SITE BREAKDOWN DELAYS -----	
BREAKDOWN DURATION (MINS)	0
RANGE OF QUEUE DELAY - MIN	0.0
(VEH-H) MAX	0.0
AV BREAKDOWNS PER DAY	0.00
AV QUEUE DELAY/DAY (VEH-H)	0.0
AV TOTAL DELAY/DAY (VEH-H)	0.0

----- SITE ACCIDENT DELAYS -----	
BREAKDOWN DURATION (MINS)	0
RANGE OF QUEUE DELAY - MIN	0
(VEH-H) MAX	0
AV BREAKDOWNS PER DAY	0
AV QUEUE DELAY/DAY (VEH-H)	0
AV TOTAL DELAY/DAY (VEH-H)	0

AVERAGE ACCIDENT NUMBERS (PIA/DAY)	
MAIN ROUTE WITHOUT WORKS	0.0057
MAIN ROUTE WITH WORKS	0.0043
'DIVERSION'	0.0009
<small>PIA: Personal Injury Accidents</small>	
IMPACTS ON ROAD USERS	
ROAD USER COSTS PER DAY	\$65,226
CONGESTED HOURS PER DAY*	8

*Delays Exceeding User-Specified Maximum

**USH 41: 9TH AVE TO STH 44 (WINNEBAGO COUNTY)
OFF-PEAK DAY CLOSURE
NO DIVERSION ROUTE (MAX QUEUE METHOD)**

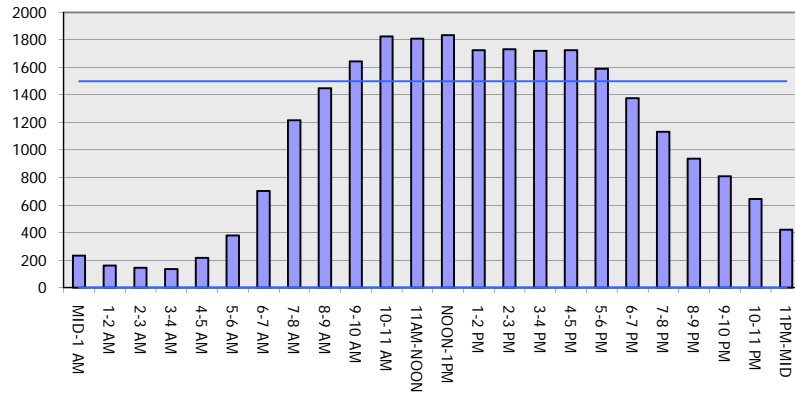
OCTOBER

Analyzed for 2009
Construction Season

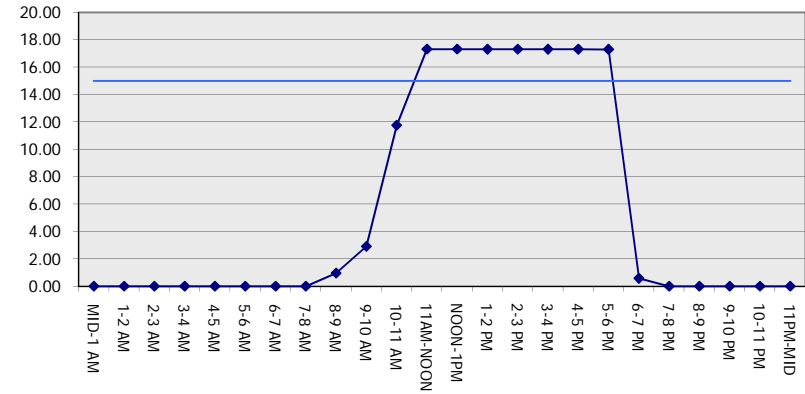
GRAPHICAL REPRESENTATION OF TRAFFIC MODEL INPUT AND OUTPUT

SATURDAY SOUTHBOUND DIRECTION

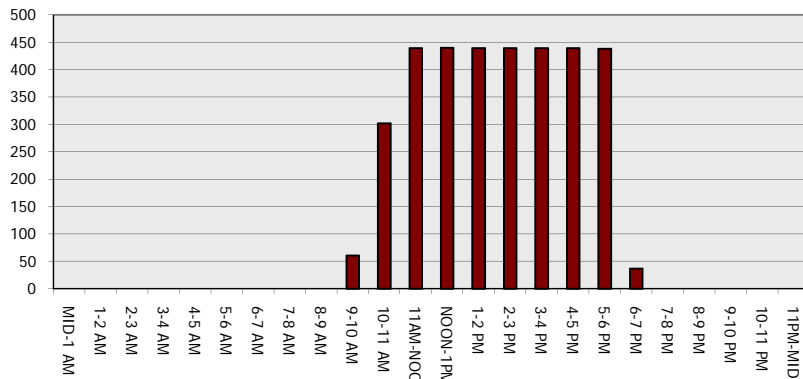
Main Route - Traffic Demand (Vehicles Per Hour)



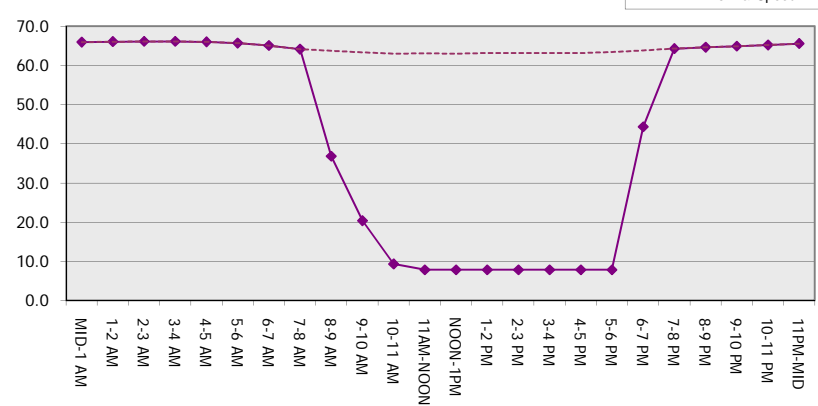
Main Route Average Delay Per Vehicle (Minutes)



Main Route - Average Queue Length (Vehicles)



Main Route - Average Speed (MPH)



USH 41: 9TH AVE TO STH 44 (WINNEBAGO COUNTY) OFF-PEAK DAY CLOSURE NO DIVERSION ROUTE (MAX QUEUE METHOD)	OCTOBER
	Analyzed for 2009 Construction Season

SUMMARY OF TRAFFIC MODEL OUTPUT

SATURDAY NORTHBOUND DIRECTION

TIME OF DAY	FLOWS AND CAPACITY IN VEH/HR						AVERAGE SPEEDS IN MPH			
	MAIN ROUTE		SITE CAPA CITY	FLOW		AV.DEL PER VEH (MINS)	AVERAGE QUEUE (VEH)	MAIN ROUTE		SITE
	DEMAND FLOW	PCT HEAVY		MAIN ROUTE	'DIVER TED'			WITHOUT WORK ZONE	WITH WORK ZONE	
MID-1 AM	270	0.0	OFF	270	0	0.00	0	65.9	65.9	65.9
1-2 AM	170	0.0	OFF	170	0	0.00	0	66.1	66.1	66.1
2-3 AM	144	0.0	OFF	144	0	0.00	0	66.1	66.1	66.1
3-4 AM	135	0.0	OFF	135	0	0.00	0	66.1	66.1	66.1
4-5 AM	178	0.0	OFF	178	0	0.00	0	66.1	66.1	66.1
5-6 AM	367	0.0	OFF	367	0	0.00	0	65.7	65.7	65.7
6-7 AM	512	0.0	OFF	512	0	0.00	0	65.5	65.5	65.5
7-8 AM	839	0.0	OFF	839	0	0.00	0	64.8	64.8	64.8
8-9 AM	1121	0.0	1499	1121	0	0.58	0	64.3	44.5	39.9
9-10 AM	1497	0.0	1499	1497	0	1.28	10	63.6	32.2	31.8
10-11 AM	1838	0.0	1500	1838	0	7.58	198	63.0	11.7	30.8
11AM-NOON	1950	0.0	1499	1514	435	17.31+	440	62.8	7.8	30.8
NOON-1PM	1894	0.0	1500	1510	384	17.31+	440	62.8	7.8	30.8
1-2 PM	1853	0.0	1500	1508	345	17.31+	440	62.9	7.8	30.8
2-3 PM	1770	0.0	1500	1506	264	17.30+	439	63.1	7.8	30.8
3-4 PM	1784	0.0	1500	1505	279	17.31+	439	63.0	7.8	30.8
4-5 PM	1789	0.0	1500	1504	286	17.31+	439	63.0	7.8	30.8
5-6 PM	1717	0.0	1500	1503	214	17.30+	439	63.2	7.8	30.8
6-7 PM	1442	0.0	OFF	1442	0	0.56	36	63.7	44.7	44.7
7-8 PM	1164	0.0	OFF	1164	0	0.00	0	64.2	64.2	64.2
8-9 PM	962	0.0	OFF	962	0	0.00	0	64.6	64.6	64.6
9-10 PM	790	0.0	OFF	790	0	0.00	0	64.9	64.9	64.9
10-11 PM	552	0.0	OFF	552	0	0.00	0	65.3	65.3	65.3
11PM-MID	381	0.0	OFF	381	0	0.00	0	65.7	65.7	65.7

"OFF" INDICATES NO ROAD WORK (ALL LANES OPEN TO TRAFFIC)

+ INDICATES QUEUEING EXCEEDS USER-SPECIFIED MAXIMUM LIMIT

----- SITE BREAKDOWN DELAYS -----	
BREAKDOWN DURATION (MINS)	0
RANGE OF QUEUE DELAY - MIN (VEH-H) MAX	0.0
AV BREAKDOWNS PER DAY	0.00
AV QUEUE DELAY/DAY (VEH-H)	0.0
AV TOTAL DELAY/DAY (VEH-H)	0.0

----- SITE ACCIDENT DELAYS -----	
BREAKDOWN DURATION (MINS)	0
RANGE OF QUEUE DELAY - MIN (VEH-H) MAX	0
AV BREAKDOWNS PER DAY	0
AV QUEUE DELAY/DAY (VEH-H)	0
AV TOTAL DELAY/DAY (VEH-H)	0

AVERAGE ACCIDENT NUMBERS (PIA/DAY)	
MAIN ROUTE WITHOUT WORKS	0.0056
MAIN ROUTE WITH WORKS	0.0041
'DIVERSION'	0.0011

PIA: Personal Injury Accidents

ECONOMIC IMPACT ON ROAD USERS	
ROAD USER COSTS PER DAY	\$65,131
CONGESTED HOURS PER DAY*	7

*Delays Exceeding User-Specified Maximum

**USH 41: 9TH AVE TO STH 44 (WINNEBAGO COUNTY)
OFF-PEAK DAY CLOSURE
NO DIVERSION ROUTE (MAX QUEUE METHOD)**

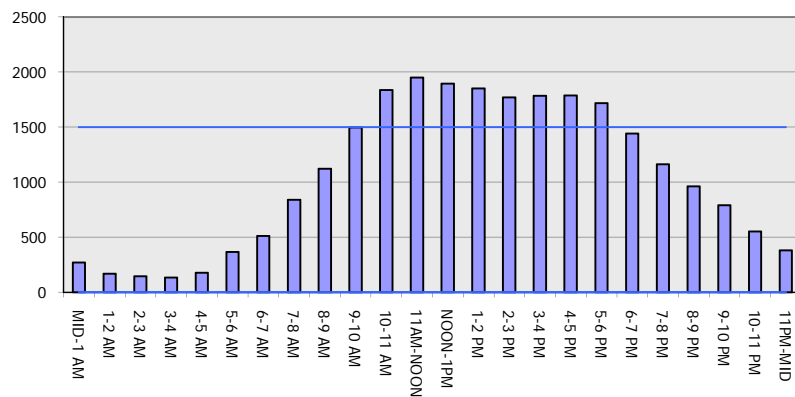
OCTOBER

Analyzed for 2009
Construction Season

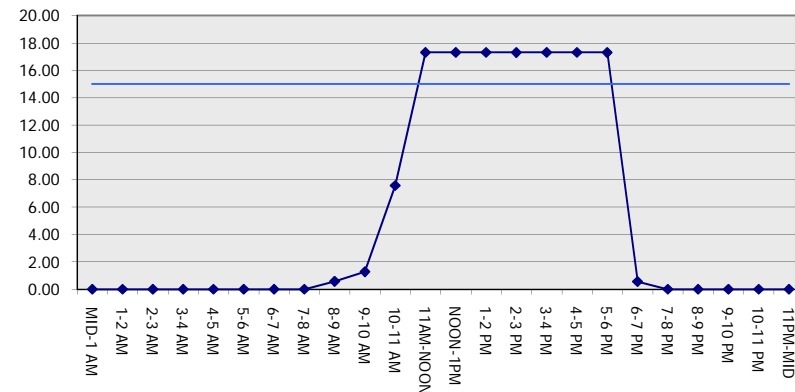
GRAPHICAL REPRESENTATION OF TRAFFIC MODEL INPUT AND OUTPUT

SATURDAY NORTHBOUND DIRECTION

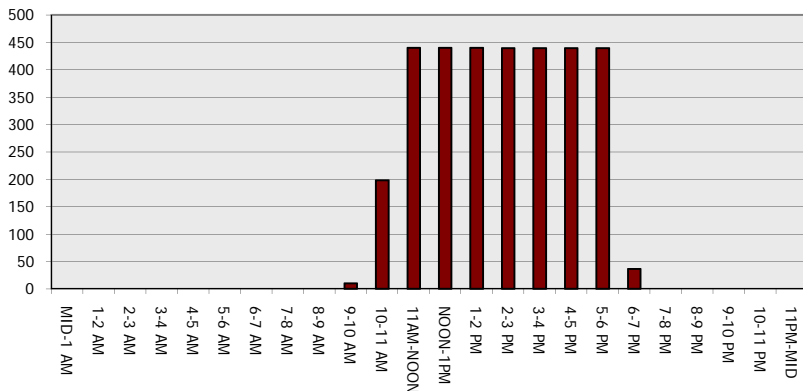
Main Route - Traffic Demand (Vehicles Per Hour)



Main Route Average Delay Per Vehicle (Minutes)



Main Route - Average Queue Length (Vehicles)



Main Route - Average Speed (MPH)

