

USH 41: BREEZEWOOD LN/BELL ST TO STH 76 (WINNEBAGO COUNTY) OFF-PEAK DAY CLOSURE NO DIVERSION ROUTE (MAX QUEUE METHOD)	OCTOBER
	Analyzed for 2009 Construction Season

SUMMARY OF TRAFFIC MODEL OUTPUT

SUNDAY SOUTHBOUND DIRECTION

TIME OF DAY	FLOWS AND CAPACITY IN VEH/HR						AVERAGE SPEEDS IN MPH				
	MAIN ROUTE		SITE CAPA CITY	FLOW		AV.DEL PER VEH (MINS)	AVERAGE QUEUE (VEH)	MAIN ROUTE		SITE	
	DEMAND FLOW	PCT HEAVY		MAIN ROUTE	'DIVER TED'			WITHOUT WORK ZONE	WITH WORK ZONE		
MID-1 AM	379	0.0	OFF	379	0	0.00	0	65.7	65.7	65.7	
1-2 AM	216	0.0	OFF	216	0	0.00	0	66.0	66.0	66.0	
2-3 AM	198	0.0	OFF	198	0	0.00	0	66.0	66.0	66.0	
3-4 AM	178	0.0	OFF	178	0	0.00	0	66.1	66.1	66.1	
4-5 AM	160	0.0	OFF	160	0	0.00	0	66.1	66.1	66.1	
5-6 AM	192	0.0	OFF	192	0	0.00	0	66.0	66.0	66.0	
6-7 AM	296	0.0	OFF	296	0	0.00	0	65.8	65.8	65.8	
7-8 AM	426	0.0	OFF	426	0	0.00	0	65.6	65.6	65.6	
8-9 AM	652	0.0	OFF	652	0	0.00	0	65.1	65.1	65.1	
9-10 AM	1048	0.0	1500	1048	0	0.52	0	64.5	58.1	41.5	
10-11 AM	1407	0.0	1499	1407	0	0.90	0	63.8	53.8	32.9	
11AM-NOON	1746	0.0	1499	1746	0	4.48	108	63.2	33.1	30.8	
NOON-1PM	1865	0.0	1500	1668	197	14.35+	365	62.9	16.1	30.8	
1-2 PM	1972	0.0	1500	1500	472	15.78+	400	62.7	15.0	30.8	
2-3 PM	2169	0.0	1500	1500	669	15.75+	400	62.3	15.0	30.8	
3-4 PM	2372	0.0	1500	1500	872	15.72+	400	62.0	15.0	30.8	
4-5 PM	2487	0.0	1500	1500	987	15.65+	400	61.0	15.0	30.8	
5-6 PM	2269	0.0	1500	1500	769	15.74+	400	62.2	15.0	30.8	
6-7 PM	2028	0.0	1500	1500	528	15.78+	400	62.6	15.0	30.8	
7-8 PM	1398	0.0	OFF	1398	0	0.55	32	63.8	57.3	57.3	
8-9 PM	919	0.0	OFF	919	0	0.00	0	64.6	64.6	64.6	
9-10 PM	616	0.0	OFF	616	0	0.00	0	65.3	65.3	65.3	
10-11 PM	422	0.0	OFF	422	0	0.00	0	65.6	65.6	65.6	
11PM-MID	243	0.0	OFF	243	0	0.00	0	66.0	66.0	66.0	

"OFF" INDICATES NO ROAD WORK (ALL LANES OPEN TO TRAFFIC)

+ INDICATES QUEUEING EXCEEDS USER-SPECIFIED MAXIMUM LIMIT

----- SITE BREAKDOWN DELAYS -----	
BREAKDOWN DURATION (MINS)	0
RANGE OF QUEUE DELAY - MIN (VEH-H) MAX	0.0
AV BREAKDOWNS PER DAY	0.00
AV QUEUE DELAY/DAY (VEH-H)	0.0
AV TOTAL DELAY/DAY (VEH-H)	0.0

----- SITE ACCIDENT DELAYS -----	
BREAKDOWN DURATION (MINS)	0
RANGE OF QUEUE DELAY - MIN (VEH-H) MAX	0
AV BREAKDOWNS PER DAY	0
AV QUEUE DELAY/DAY (VEH-H)	0
AV TOTAL DELAY/DAY (VEH-H)	0

AVERAGE ACCIDENT NUMBERS (PIA/DAY)	
MAIN ROUTE WITHOUT WORKS	0.0212
MAIN ROUTE WITH WORKS	0.0165
'DIVERSION'	0.0086
PIA: Personal Injury Accidents	
IMPACTS ON ROAD USERS	
ROAD USER COSTS PER DAY	\$67,396
CONGESTED HOURS PER DAY*	7

*Delays Exceeding User-Specified Maximum

USH 41: BREEZEWOOD LN/BELL ST TO STH 76 (WINNEBAGO COUNTY)
OFF-PEAK DAY CLOSURE
NO DIVERSION ROUTE (MAX QUEUE METHOD)

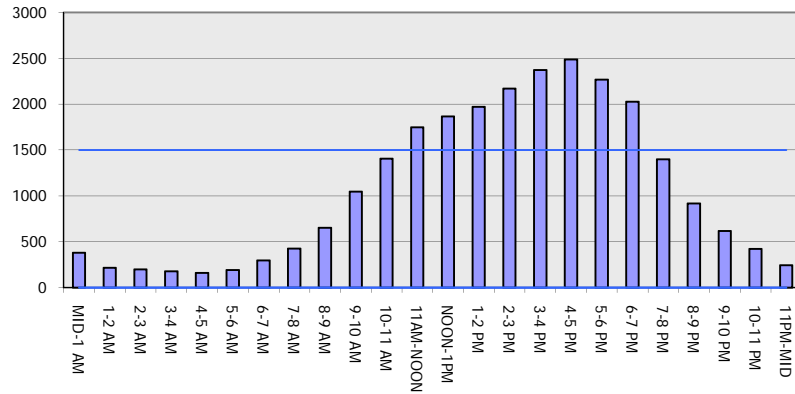
OCTOBER

Analyzed for 2009
 Construction Season

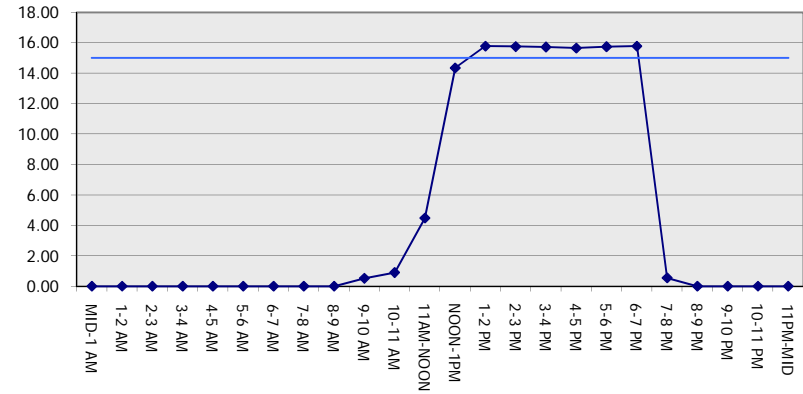
GRAPHICAL REPRESENTATION OF TRAFFIC MODEL INPUT AND OUTPUT

SUNDAY SOUTHBOUND DIRECTION

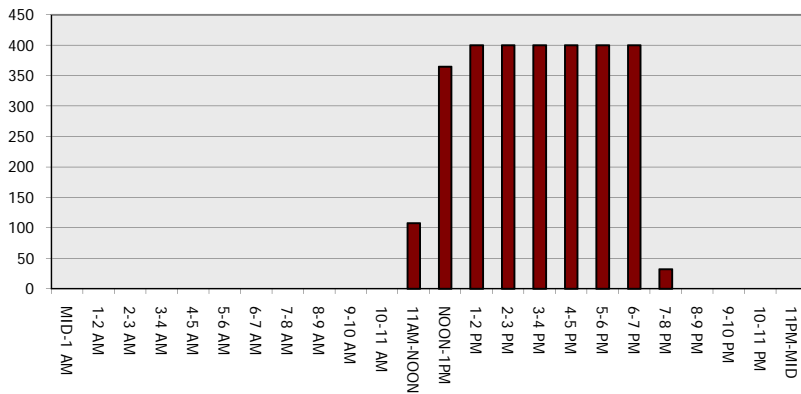
Main Route - Traffic Demand (Vehicles Per Hour)



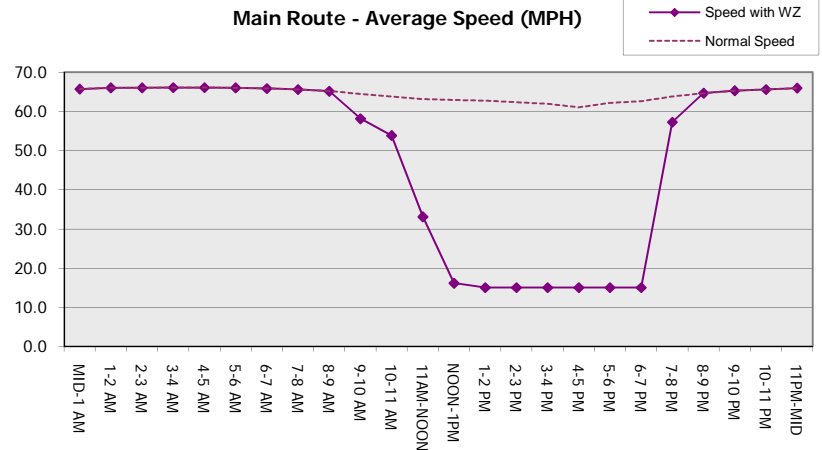
Main Route Average Delay Per Vehicle (Minutes)



Main Route - Average Queue Length (Vehicles)



Main Route - Average Speed (MPH)



USH 41: BREEZEWOOD LN/BELL ST TO STH 76 (WINNEBAGO COUNTY) OFF-PEAK DAY CLOSURE NO DIVERSION ROUTE (MAX QUEUE METHOD)	OCTOBER
	Analyzed for 2009 Construction Season

SUMMARY OF TRAFFIC MODEL OUTPUT

SUNDAY NORTHBOUND DIRECTION

TIME OF DAY	FLOWS AND CAPACITY IN VEH/HR						AVERAGE SPEEDS IN MPH			
	MAIN ROUTE		SITE CAPA CITY	FLOW		AV.DEL PER VEH (MINS)	AVERAGE QUEUE (VEH)	MAIN ROUTE		SITE
	DEMAND FLOW	PCT HEAVY		MAIN ROUTE	'DIVER TED'			WITHOUT WORK ZONE	WITH WORK ZONE	
MID-1 AM	319	0.0	OFF	319	0	0.00	0	65.8	65.8	65.8
1-2 AM	222	0.0	OFF	222	0	0.00	0	66.0	66.0	66.0
2-3 AM	180	0.0	OFF	180	0	0.00	0	66.1	66.1	66.1
3-4 AM	118	0.0	OFF	118	0	0.00	0	66.1	66.1	66.1
4-5 AM	113	0.0	OFF	113	0	0.00	0	66.2	66.2	66.2
5-6 AM	210	0.0	OFF	210	0	0.00	0	66.0	66.0	66.0
6-7 AM	284	0.0	OFF	284	0	0.00	0	65.8	65.8	65.8
7-8 AM	512	0.0	OFF	512	0	0.00	0	65.5	65.5	65.5
8-9 AM	1064	0.0	OFF	1064	0	0.00	0	64.4	64.4	64.4
9-10 AM	1605	0.0	1499	1605	0	2.26	37	63.4	43.4	30.8
10-11 AM	1548	0.0	1499	1548	0	5.71	127	63.5	29.4	30.8
11AM-NOON	1661	0.0	1500	1661	0	9.23	226	63.3	22.0	30.8
NOON-1PM	1769	0.0	1500	1614	156	15.34+	388	63.1	15.4	30.8
1-2 PM	1632	0.0	1499	1474	158	15.73+	397	63.3	15.1	30.8
2-3 PM	1681	0.0	1500	1500	181	15.83+	400	63.3	15.0	30.8
3-4 PM	1768	0.0	1500	1500	268	15.81+	400	63.1	15.0	30.8
4-5 PM	1761	0.0	1500	1500	261	15.81+	400	63.1	15.0	30.8
5-6 PM	1693	0.0	1500	1500	193	15.82+	400	63.2	15.0	30.8
6-7 PM	1493	0.0	1500	1469	24	15.60+	393	63.6	15.2	30.8
7-8 PM	1249	0.0	OFF	1249	0	0.43	24	64.1	58.9	58.9
8-9 PM	895	0.0	OFF	895	0	0.00	0	64.7	64.7	64.7
9-10 PM	669	0.0	OFF	669	0	0.00	0	65.1	65.1	65.1
10-11 PM	462	0.0	OFF	462	0	0.00	0	65.5	65.5	65.5
11PM-MID	258	0.0	OFF	258	0	0.00	0	65.9	65.9	65.9

"OFF" INDICATES NO ROAD WORK (ALL LANES OPEN TO TRAFFIC)

+ INDICATES QUEUEING EXCEEDS USER-SPECIFIED MAXIMUM LIMIT

----- SITE BREAKDOWN DELAYS -----	
BREAKDOWN DURATION (MINS)	0
RANGE OF QUEUE DELAY - MIN (VEH-H) MAX	0.0
AV BREAKDOWNS PER DAY	0.00
AV QUEUE DELAY/DAY (VEH-H)	0.0
AV TOTAL DELAY/DAY (VEH-H)	0.0

----- SITE ACCIDENT DELAYS -----	
BREAKDOWN DURATION (MINS)	0
RANGE OF QUEUE DELAY - MIN (VEH-H) MAX	0
AV BREAKDOWNS PER DAY	0
AV QUEUE DELAY/DAY (VEH-H)	0
AV TOTAL DELAY/DAY (VEH-H)	0

AVERAGE ACCIDENT NUMBERS (PIA/DAY)	
MAIN ROUTE WITHOUT WORKS	0.0192
MAIN ROUTE WITH WORKS	0.0171
'DIVERSION'	0.0024

PIA: Personal Injury Accidents

ECONOMIC IMPACT ON ROAD USERS	
ROAD USER COSTS PER DAY	\$58,437
CONGESTED HOURS PER DAY*	7

*Delays Exceeding User-Specified Maximum

USH 41: BREEZEWOOD LN/BELL ST TO STH 76 (WINNEBAGO COUNTY)
OFF-PEAK DAY CLOSURE
NO DIVERSION ROUTE (MAX QUEUE METHOD)

OCTOBER

Analyzed for 2009
 Construction Season

GRAPHICAL REPRESENTATION OF TRAFFIC MODEL INPUT AND OUTPUT
SUNDAY NORTHBOUND DIRECTION

