

<b>USH 41: BREEZEWOOD LN/BELL ST TO STH 76 (WINNEBAGO COUNTY)</b> <b>OFF-PEAK DAY CLOSURE</b> <b>NO DIVERSION ROUTE (MAX QUEUE METHOD)</b>	<b>AUGUST</b>
	Analyzed for 2009 Construction Season

**SUMMARY OF TRAFFIC MODEL OUTPUT**

MON-THUR                  SOUTHBOUND DIRECTION

TIME OF DAY	FLOWS AND CAPACITY IN VEH/HR						AVERAGE SPEEDS IN MPH				
	MAIN ROUTE		SITE CAPA CITY	FLOW		AV.DEL PER VEH (MINS)	AVERAGE QUEUE (VEH)	MAIN ROUTE		SITE	
	DEMAND FLOW	PCT HEAVY		MAIN ROUTE	'DIVER TED'			WITHOUT WORK ZONE	WITH WORK ZONE		
MID-1 AM	225	0.0	OFF	225	0	0.00	0	66.0	66.0	66.0	
1-2 AM	162	0.0	OFF	162	0	0.00	0	66.1	66.1	66.1	
2-3 AM	163	0.0	OFF	163	0	0.00	0	66.1	66.1	66.1	
3-4 AM	211	0.0	OFF	211	0	0.00	0	66.0	66.0	66.0	
4-5 AM	400	0.0	OFF	400	0	0.00	0	65.6	65.6	65.6	
5-6 AM	937	0.0	OFF	937	0	0.00	0	64.6	64.6	64.6	
6-7 AM	1811	0.0	OFF	1811	0	0.00	0	63.0	63.0	63.0	
7-8 AM	2458	0.0	OFF	2458	0	0.00	0	61.3	61.3	61.3	
8-9 AM	1941	0.0	OFF	1941	0	0.00	0	62.8	62.8	62.8	
9-10 AM	1688	0.0	OFF	1688	0	0.00	0	63.2	63.2	63.2	
10-11 AM	1680	0.0	1499	1680	0	3.98	88	63.3	35.0	30.8	
11AM-NOON	1735	0.0	1500	1735	0	11.51+	292	63.2	18.9	30.8	
NOON-1PM	1821	0.0	1499	1500	321	15.81+	399	63.0	15.0	30.8	
1-2 PM	2009	0.0	1500	1500	509	15.78+	400	62.7	15.0	30.8	
2-3 PM	2202	0.0	1500	1500	702	15.75+	400	62.3	15.0	30.8	
3-4 PM	2345	0.0	OFF	2345	0	1.11	51	62.0	50.9	50.9	
4-5 PM	2693	0.0	OFF	2693	0	0.00	0	58.9	58.9	58.9	
5-6 PM	2507	0.0	OFF	2507	0	0.00	0	60.8	60.8	60.8	
6-7 PM	1588	0.0	OFF	1588	0	0.00	0	63.4	63.4	63.4	
7-8 PM	1144	0.0	OFF	1144	0	0.00	0	64.3	64.3	64.3	
8-9 PM	1040	0.0	OFF	1040	0	0.00	0	64.5	64.5	64.5	
9-10 PM	894	0.0	OFF	894	0	0.00	0	64.7	64.7	64.7	
10-11 PM	712	0.0	OFF	712	0	0.00	0	65.1	65.1	65.1	
11PM-MID	483	0.0	OFF	483	0	0.00	0	65.5	65.5	65.5	

"OFF" INDICATES NO ROAD WORK (ALL LANES OPEN TO TRAFFIC)

+ INDICATES QUEUEING EXCEEDS USER-SPECIFIED MAXIMUM LIMIT

*----- SITE BREAKDOWN DELAYS -----*	
BREAKDOWN DURATION (MINS)	0
RANGE OF QUEUE DELAY - MIN (VEH-H) MAX	0.0
AV BREAKDOWNS PER DAY	0.00
AV QUEUE DELAY/DAY (VEH-H)	0.0
AV TOTAL DELAY/DAY (VEH-H)	0.0

*----- SITE ACCIDENT DELAYS -----*	
BREAKDOWN DURATION (MINS)	0
RANGE OF QUEUE DELAY - MIN (VEH-H) MAX	0
AV BREAKDOWNS PER DAY	0
AV QUEUE DELAY/DAY (VEH-H)	0
AV TOTAL DELAY/DAY (VEH-H)	0

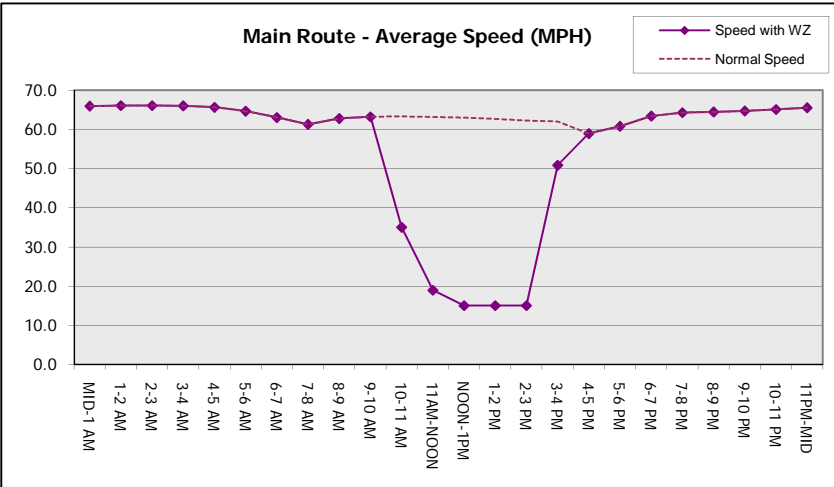
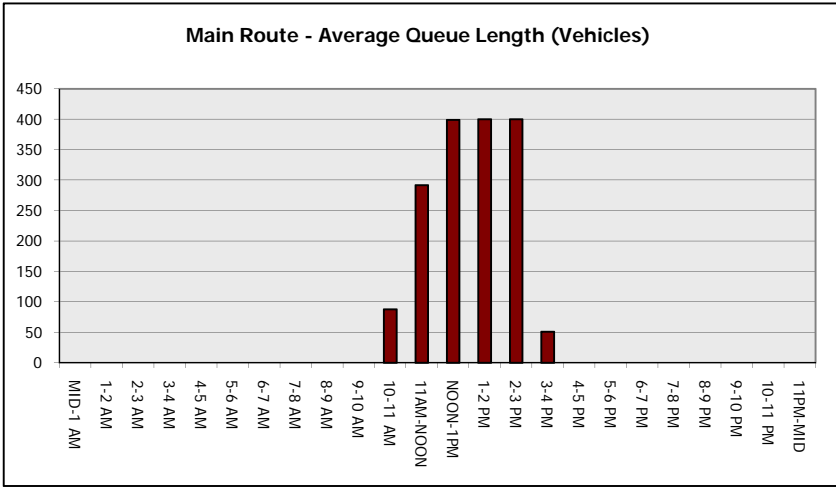
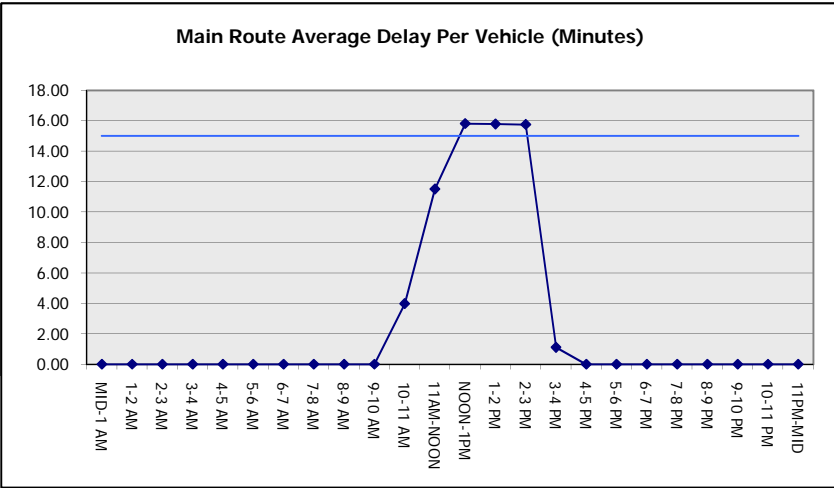
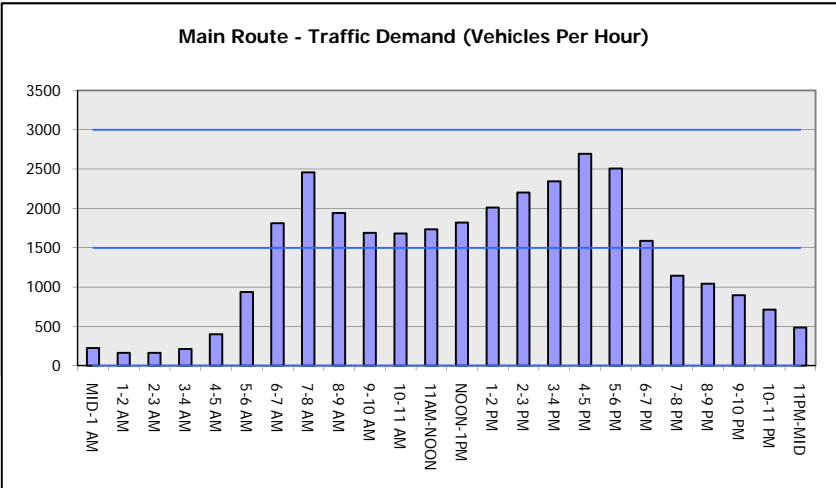
AVERAGE ACCIDENT NUMBERS (PIA/DAY)	
MAIN ROUTE WITHOUT WORKS	0.0272
MAIN ROUTE WITH WORKS	0.0254
'DIVERSION'	0.0029
<small>PIA: Personal Injury Accidents</small>	
IMPACTS ON ROAD USERS	
ROAD USER COSTS PER DAY	\$26,428
CONGESTED HOURS PER DAY*	4

\*Delays Exceeding User-Specified Maximum

**USH 41: BREEZEWOOD LN/BELL ST TO STH 76 (WINNEBAGO COUNTY)**  
**OFF-PEAK DAY CLOSURE**  
**NO DIVERSION ROUTE (MAX QUEUE METHOD)**

**AUGUST**  
 Analyzed for 2009  
 Construction Season

**GRAPHICAL REPRESENTATION OF TRAFFIC MODEL INPUT AND OUTPUT**  
**MON-THUR SOUTHBOUND DIRECTION**



<b>USH 41: BREEZEWOOD LN/BELL ST TO STH 76 (WINNEBAGO COUNTY)</b> <b>OFF-PEAK DAY CLOSURE</b> <b>NO DIVERSION ROUTE (MAX QUEUE METHOD)</b>	<b>AUGUST</b>
	Analyzed for 2009 Construction Season

**SUMMARY OF TRAFFIC MODEL OUTPUT**

MON-THUR                      NORTHBOUND DIRECTION

TIME OF DAY	FLOWS AND CAPACITY IN VEH/HR						AVERAGE SPEEDS IN MPH			
	MAIN ROUTE		SITE CAPA CITY	FLOW		AV.DEL PER VEH (MINS)	AVERAGE QUEUE (VEH)	MAIN ROUTE		SITE
	DEMAND FLOW	PCT HEAVY		MAIN ROUTE	'DIVER TED'			WITHOUT WORK ZONE	WITH WORK ZONE	
MID-1 AM	237	0.0	OFF	237	0	0.00	0	66.0	66.0	66.0
1-2 AM	174	0.0	OFF	174	0	0.00	0	66.1	66.1	66.1
2-3 AM	150	0.0	OFF	150	0	0.00	0	66.1	66.1	66.1
3-4 AM	167	0.0	OFF	167	0	0.00	0	66.1	66.1	66.1
4-5 AM	320	0.0	OFF	320	0	0.00	0	65.8	65.8	65.8
5-6 AM	898	0.0	OFF	898	0	0.00	0	64.7	64.7	64.7
6-7 AM	1616	0.0	OFF	1616	0	0.00	0	63.4	63.4	63.4
7-8 AM	2519	0.0	OFF	2519	0	0.00	0	60.7	60.7	60.7
8-9 AM	1859	0.0	OFF	1859	0	0.00	0	62.9	62.9	62.9
9-10 AM	1717	0.0	OFF	1717	0	0.00	0	63.2	63.2	63.2
10-11 AM	1812	0.0	1499	1812	0	5.82	150	63.0	28.9	30.8
11AM-NOON	1884	0.0	1499	1598	286	15.39+	389	62.8	15.3	30.8
NOON-1PM	1867	0.0	1500	1500	367	15.80+	400	62.9	15.0	30.8
1-2 PM	1942	0.0	1500	1500	442	15.79+	400	62.8	15.0	30.8
2-3 PM	2181	0.0	1500	1500	681	15.75+	400	62.3	15.0	30.8
3-4 PM	2549	0.0	OFF	2549	0	1.25	57	60.4	48.6	48.6
4-5 PM	2870	0.0	OFF	2870	0	0.00	0	57.1	57.1	57.1
5-6 PM	2663	0.0	OFF	2663	0	0.00	0	59.2	59.2	59.2
6-7 PM	1735	0.0	OFF	1735	0	0.00	0	63.2	63.2	63.2
7-8 PM	1171	0.0	OFF	1171	0	0.00	0	64.2	64.2	64.2
8-9 PM	986	0.0	OFF	986	0	0.00	0	64.5	64.5	64.5
9-10 PM	812	0.0	OFF	812	0	0.00	0	64.9	64.9	64.9
10-11 PM	628	0.0	OFF	628	0	0.00	0	65.2	65.2	65.2
11PM-MID	458	0.0	OFF	458	0	0.00	0	65.5	65.5	65.5

"OFF" INDICATES NO ROAD WORK (ALL LANES OPEN TO TRAFFIC)

+ INDICATES QUEUEING EXCEEDS USER-SPECIFIED MAXIMUM LIMIT

BREAKDOWN DURATION (MINS)	0
RANGE OF QUEUE DELAY - MIN (VEH-H) MAX	0.0
AV BREAKDOWNS PER DAY	0.00
AV QUEUE DELAY/DAY (VEH-H)	0.0
AV TOTAL DELAY/DAY (VEH-H)	0.0

BREAKDOWN DURATION (MINS)	0
RANGE OF QUEUE DELAY - MIN (VEH-H) MAX	0
AV BREAKDOWNS PER DAY	0
AV QUEUE DELAY/DAY (VEH-H)	0
AV TOTAL DELAY/DAY (VEH-H)	0

MAIN ROUTE WITHOUT WORKS	0.0275
MAIN ROUTE WITH WORKS	0.0255
'DIVERSION'	0.0034

PIA: Personal Injury Accidents

ROAD USER COSTS PER DAY	\$29,148
CONGESTED HOURS PER DAY*	4

\*Delays Exceeding User-Specified Maximum

**USH 41: BREEZEWOOD LN/BELL ST TO STH 76 (WINNEBAGO COUNTY)**  
**OFF-PEAK DAY CLOSURE**  
**NO DIVERSION ROUTE (MAX QUEUE METHOD)**

**AUGUST**

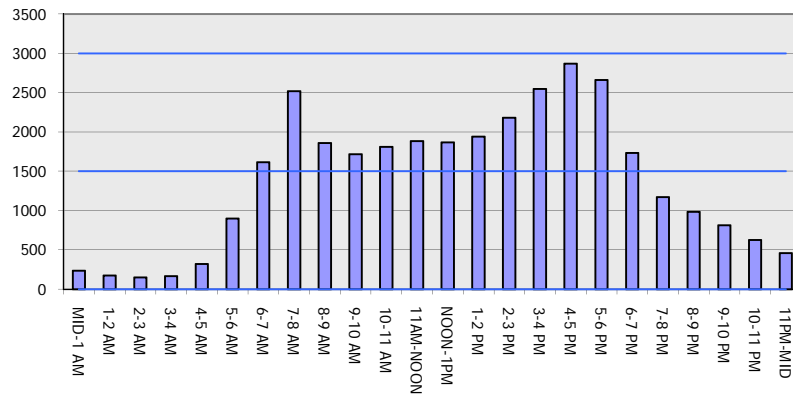
Analyzed for 2009  
 Construction Season

**GRAPHICAL REPRESENTATION OF TRAFFIC MODEL INPUT AND OUTPUT**

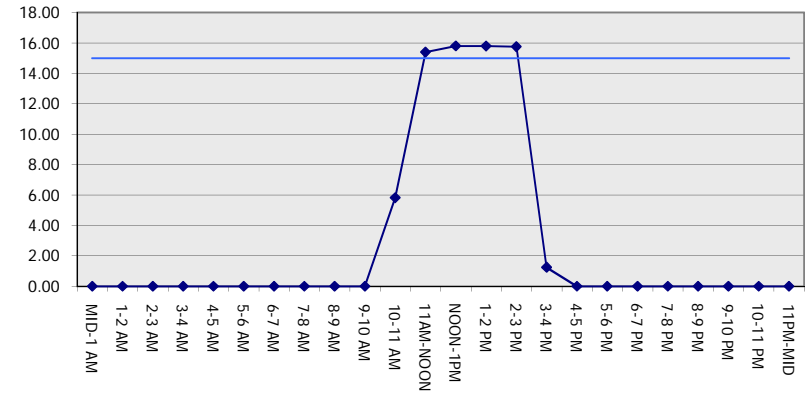
**MON-THUR**

**NORTHBOUND DIRECTION**

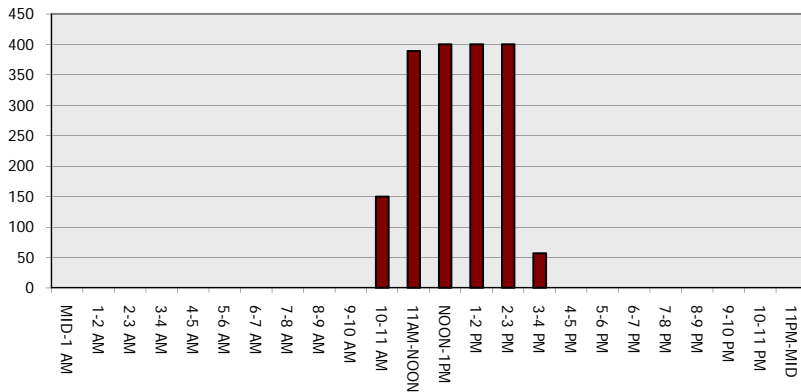
**Main Route - Traffic Demand (Vehicles Per Hour)**



**Main Route Average Delay Per Vehicle (Minutes)**



**Main Route - Average Queue Length (Vehicles)**



**Main Route - Average Speed (MPH)**

