

<b>STH 441: USH 10 TO CTH CE (OUTAGAMIE COUNTY)</b> <b>OFF-PEAK DAY CLOSURE</b> <b>NO DIVERSION ROUTE (MAX QUEUE METHOD)</b>	<b>OCTOBER</b>
	Analyzed for 2009 Construction Season

**SUMMARY OF TRAFFIC MODEL OUTPUT**

MON-THUR                  SOUTHBOUND DIRECTION

TIME OF DAY	FLOWS AND CAPACITY IN VEH/HR						AVERAGE SPEEDS IN MPH				
	MAIN ROUTE		SITE CAPA CITY	FLOW		AV.DEL PER VEH (MINS)	AVERAGE QUEUE (VEH)	MAIN ROUTE		SITE	
	DEMAND FLOW	PCT HEAVY		MAIN ROUTE	'DIVER TED'			WITHOUT WORK ZONE	WITH WORK ZONE		
MID-1 AM	79	0.0	OFF	79	0	0.00	0	66.3	66.3	66.3	
1-2 AM	64	0.0	OFF	64	0	0.00	0	66.3	66.3	66.3	
2-3 AM	58	0.0	OFF	58	0	0.00	0	66.3	66.3	66.3	
3-4 AM	84	0.0	OFF	84	0	0.00	0	66.2	66.2	66.2	
4-5 AM	259	0.0	OFF	259	0	0.00	0	65.9	65.9	65.9	
5-6 AM	820	0.0	OFF	820	0	0.00	0	64.8	64.8	64.8	
6-7 AM	1526	0.0	OFF	1526	0	0.00	0	63.5	63.5	63.5	
7-8 AM	2272	0.0	OFF	2272	0	0.00	0	62.2	62.2	62.2	
8-9 AM	1443	0.0	OFF	1443	0	0.00	0	63.7	63.7	63.7	
9-10 AM	1010	0.0	OFF	1010	0	0.00	0	64.5	64.5	64.5	
10-11 AM	983	0.0	1500	983	0	0.52	0	64.6	56.1	41.7	
11AM-NOON	1055	0.0	1500	1055	0	0.52	0	64.4	55.9	41.5	
NOON-1PM	1129	0.0	1500	1129	0	0.55	0	64.3	55.5	40.9	
1-2 PM	1230	0.0	1500	1230	0	0.68	0	64.1	53.6	37.5	
2-3 PM	1273	0.0	1499	1273	0	0.73	0	64.0	52.8	36.3	
3-4 PM	1496	0.0	OFF	1496	0	0.00	0	63.6	63.6	63.6	
4-5 PM	1684	0.0	OFF	1684	0	0.00	0	63.2	63.2	63.2	
5-6 PM	1613	0.0	OFF	1613	0	0.00	0	63.4	63.4	63.4	
6-7 PM	1068	0.0	OFF	1068	0	0.00	0	64.4	64.4	64.4	
7-8 PM	666	0.0	OFF	666	0	0.00	0	65.1	65.1	65.1	
8-9 PM	548	0.0	OFF	548	0	0.00	0	65.4	65.4	65.4	
9-10 PM	529	0.0	OFF	529	0	0.00	0	65.4	65.4	65.4	
10-11 PM	348	0.0	OFF	348	0	0.00	0	65.8	65.8	65.8	
11PM-MID	183	0.0	OFF	183	0	0.00	0	66.1	66.1	66.1	

**"OFF" INDICATES NO ROAD WORK (ALL LANES OPEN TO TRAFFIC)**

*----- SITE BREAKDOWN DELAYS -----*	
BREAKDOWN DURATION (MINS)	0
RANGE OF QUEUE DELAY - MIN (VEH-H) MAX	0.0
AV BREAKDOWNS PER DAY	0.00
AV QUEUE DELAY/DAY (VEH-H)	0.0
AV TOTAL DELAY/DAY (VEH-H)	0.0

*----- SITE ACCIDENT DELAYS -----*	
BREAKDOWN DURATION (MINS)	0
RANGE OF QUEUE DELAY - MIN (VEH-H) MAX	0
AV BREAKDOWNS PER DAY	0
AV QUEUE DELAY/DAY (VEH-H)	0
AV TOTAL DELAY/DAY (VEH-H)	0

AVERAGE ACCIDENT NUMBERS (PIA/DAY)	
MAIN ROUTE WITHOUT WORKS	0.0126
MAIN ROUTE WITH WORKS	0.0122
'DIVERSION'	0.0000
PIA: Personal Injury Accidents	
IMPACTS ON ROAD USERS	
ROAD USER COSTS PER DAY	\$624
CONGESTED HOURS PER DAY*	0

\*Delays Exceeding User-Specified Maximum

**STH 441: USH 10 TO CTH CE (OUTAGAMIE COUNTY)  
OFF-PEAK DAY CLOSURE  
NO DIVERSION ROUTE (MAX QUEUE METHOD)**

**OCTOBER**

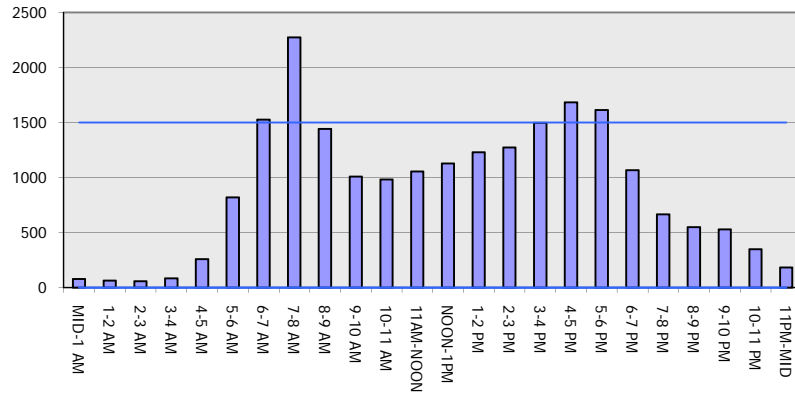
Analyzed for 2009  
Construction Season

**GRAPHICAL REPRESENTATION OF TRAFFIC MODEL INPUT AND OUTPUT**

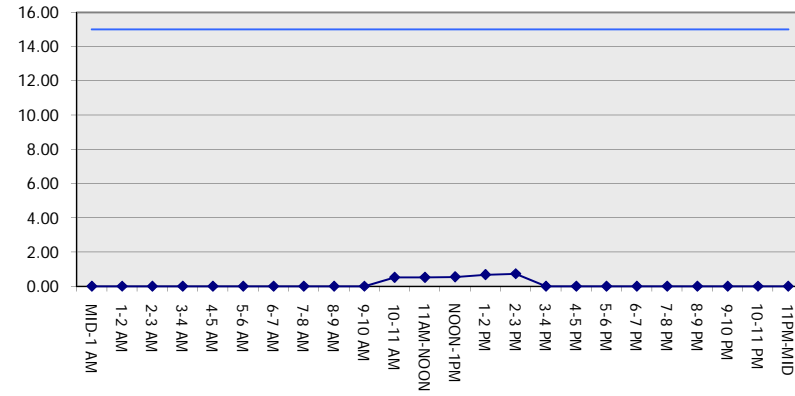
**MON-THUR**

**SOUTHBOUND DIRECTION**

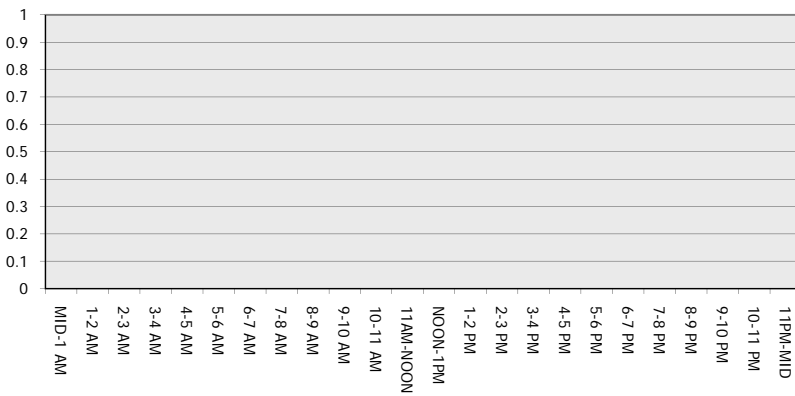
**Main Route - Traffic Demand (Vehicles Per Hour)**



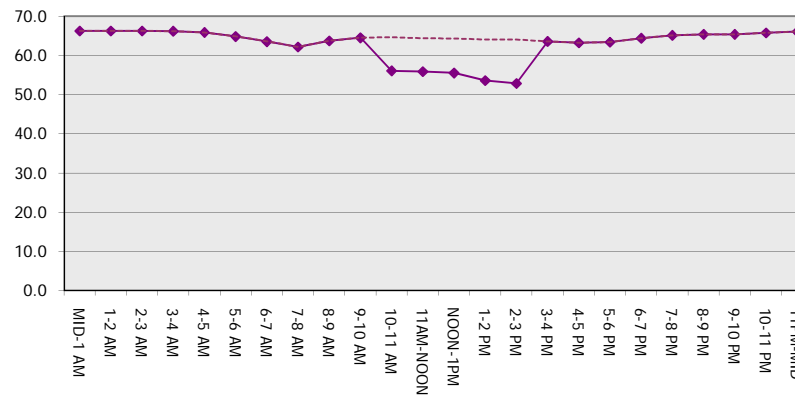
**Main Route Average Delay Per Vehicle (Minutes)**



**Main Route - Average Queue Length (Vehicles)**



**Main Route - Average Speed (MPH)**



<b>STH 441: USH 10 TO CTH CE (OUTAGAMIE COUNTY)</b> <b>OFF-PEAK DAY CLOSURE</b> <b>NO DIVERSION ROUTE (MAX QUEUE METHOD)</b>	<b>OCTOBER</b>
	Analyzed for 2009 Construction Season

**SUMMARY OF TRAFFIC MODEL OUTPUT**

MON-THUR                      NORTHBOUND DIRECTION

TIME OF DAY	FLOWS AND CAPACITY IN VEH/HR							AVERAGE SPEEDS IN MPH		
	MAIN ROUTE		SITE CAPA CITY	FLOW		AV.DEL PER VEH (MINS)	AVERAGE QUEUE (VEH)	MAIN ROUTE		SITE
	DEMAND FLOW	PCT HEAVY		MAIN ROUTE	'DIVER TED'			WITHOUT WORK ZONE	WITH WORK ZONE	
MID-1 AM	188	0.0	OFF	188	0	0.00	0	66.0	66.0	66.0
1-2 AM	126	0.0	OFF	126	0	0.00	0	66.1	66.1	66.1
2-3 AM	109	0.0	OFF	109	0	0.00	0	66.2	66.2	66.2
3-4 AM	59	0.0	OFF	59	0	0.00	0	66.3	66.3	66.3
4-5 AM	126	0.0	OFF	126	0	0.00	0	66.1	66.1	66.1
5-6 AM	448	0.0	OFF	448	0	0.00	0	65.6	65.6	65.6
6-7 AM	1185	0.0	OFF	1185	0	0.00	0	64.1	64.1	64.1
7-8 AM	1915	0.0	OFF	1915	0	0.00	0	62.8	62.8	62.8
8-9 AM	1366	0.0	OFF	1366	0	0.00	0	63.8	63.8	63.8
9-10 AM	1068	0.0	OFF	1068	0	0.00	0	64.4	64.4	64.4
10-11 AM	1108	0.0	1500	1108	0	0.53	0	64.3	55.8	41.3
11AM-NOON	1210	0.0	1500	1210	0	0.65	0	64.1	54.0	38.1
NOON-1PM	1319	0.0	1500	1319	0	0.79	0	63.9	52.0	35.0
1-2 PM	1346	0.0	1499	1346	0	0.82	0	63.9	51.6	34.3
2-3 PM	1797	0.0	1499	1797	0	4.61	121	63.0	27.3	30.8
3-4 PM	2227	0.0	OFF	2227	0	0.47	24	62.2	55.0	55.0
4-5 PM	2695	0.0	OFF	2695	0	0.00	0	58.9	58.9	58.9
5-6 PM	2376	0.0	OFF	2376	0	0.00	0	62.0	62.0	62.0
6-7 PM	1537	0.0	OFF	1537	0	0.00	0	63.5	63.5	63.5
7-8 PM	955	0.0	OFF	955	0	0.00	0	64.6	64.6	64.6
8-9 PM	807	0.0	OFF	807	0	0.00	0	64.9	64.9	64.9
9-10 PM	645	0.0	OFF	645	0	0.00	0	65.2	65.2	65.2
10-11 PM	529	0.0	OFF	529	0	0.00	0	65.4	65.4	65.4
11PM-MID	325	0.0	OFF	325	0	0.00	0	65.8	65.8	65.8

"OFF" INDICATES NO ROAD WORK (ALL LANES OPEN TO TRAFFIC)

*----- SITE BREAKDOWN DELAYS -----*	
BREAKDOWN DURATION (MINS)	0
RANGE OF QUEUE DELAY - MIN (VEH-H) MAX	0.0
AV BREAKDOWNS PER DAY	0.00
AV QUEUE DELAY/DAY (VEH-H)	0.0
AV TOTAL DELAY/DAY (VEH-H)	0.0

*----- SITE ACCIDENT DELAYS -----*	
BREAKDOWN DURATION (MINS)	0
RANGE OF QUEUE DELAY - MIN (VEH-H) MAX	0
AV BREAKDOWNS PER DAY	0
AV QUEUE DELAY/DAY (VEH-H)	0
AV TOTAL DELAY/DAY (VEH-H)	0

AVERAGE ACCIDENT NUMBERS (PIA/DAY)	
MAIN ROUTE WITHOUT WORKS	0.0150
MAIN ROUTE WITH WORKS	0.0145
'DIVERSION'	0.0000

PIA: Personal Injury Accidents

ECONOMIC IMPACT ON ROAD USERS	
ROAD USER COSTS PER DAY	\$2,328
CONGESTED HOURS PER DAY*	0

\*Delays Exceeding User-Specified Maximum

**STH 441: USH 10 TO CTH CE (OUTAGAMIE COUNTY)  
OFF-PEAK DAY CLOSURE  
NO DIVERSION ROUTE (MAX QUEUE METHOD)**

**OCTOBER**

Analyzed for 2009  
Construction Season

**GRAPHICAL REPRESENTATION OF TRAFFIC MODEL INPUT AND OUTPUT  
MON-THUR NORTHBOUND DIRECTION**

