

<b>STH 441: USH 10 TO CTH CE (OUTAGAMIE COUNTY)</b> <b>OFF-PEAK DAY CLOSURE</b> <b>NO DIVERSION ROUTE (MAX QUEUE METHOD)</b>	<b>OCTOBER</b>
	Analyzed for 2009 Construction Season

**SUMMARY OF TRAFFIC MODEL OUTPUT**

FRIDAY                  SOUTHBOUND DIRECTION

TIME OF DAY	FLOWS AND CAPACITY IN VEH/HR						AVERAGE SPEEDS IN MPH				
	MAIN ROUTE		SITE CAPA CITY	FLOW		AV.DEL PER VEH (MINS)	AVERAGE QUEUE (VEH)	MAIN ROUTE		SITE	
	DEMAND FLOW	PCT HEAVY		MAIN ROUTE	'DIVER TED'			WITHOUT WORK ZONE	WITH WORK ZONE		
MID-1 AM	101	0.0	OFF	101	0	0.00	0	66.2	66.2	66.2	
1-2 AM	80	0.0	OFF	80	0	0.00	0	66.3	66.3	66.3	
2-3 AM	78	0.0	OFF	78	0	0.00	0	66.3	66.3	66.3	
3-4 AM	80	0.0	OFF	80	0	0.00	0	66.3	66.3	66.3	
4-5 AM	286	0.0	OFF	286	0	0.00	0	65.8	65.8	65.8	
5-6 AM	725	0.0	OFF	725	0	0.00	0	65.0	65.0	65.0	
6-7 AM	1419	0.0	OFF	1419	0	0.00	0	63.7	63.7	63.7	
7-8 AM	2184	0.0	OFF	2184	0	0.00	0	62.3	62.3	62.3	
8-9 AM	1432	0.0	OFF	1432	0	0.00	0	63.7	63.7	63.7	
9-10 AM	1043	0.0	OFF	1043	0	0.00	0	64.5	64.5	64.5	
10-11 AM	1068	0.0	1500	1068	0	0.53	0	64.4	55.9	41.4	
11AM-NOON	1194	0.0	1500	1194	0	0.63	0	64.1	54.3	38.6	
NOON-1PM	1309	0.0	1500	1309	0	0.78	0	64.0	52.2	35.3	
1-2 PM	1385	0.0	1500	1385	0	0.88	0	63.8	51.0	33.3	
2-3 PM	1439	0.0	1499	1439	0	0.95	0	63.7	50.1	32.1	
3-4 PM	1688	0.0	OFF	1688	0	0.00	0	63.2	63.2	63.2	
4-5 PM	1756	0.0	OFF	1756	0	0.00	0	63.1	63.1	63.1	
5-6 PM	1619	0.0	OFF	1619	0	0.00	0	63.3	63.3	63.3	
6-7 PM	1147	0.0	OFF	1147	0	0.00	0	64.3	64.3	64.3	
7-8 PM	736	0.0	OFF	736	0	0.00	0	65.0	65.0	65.0	
8-9 PM	549	0.0	OFF	549	0	0.00	0	65.4	65.4	65.4	
9-10 PM	596	0.0	OFF	596	0	0.00	0	65.3	65.3	65.3	
10-11 PM	459	0.0	OFF	459	0	0.00	0	65.5	65.5	65.5	
11PM-MID	325	0.0	OFF	325	0	0.00	0	65.8	65.8	65.8	

"OFF" INDICATES NO ROAD WORK (ALL LANES OPEN TO TRAFFIC)

*----- SITE BREAKDOWN DELAYS -----*	
BREAKDOWN DURATION (MINS)	0
RANGE OF QUEUE DELAY - MIN (VEH-H) MAX	0.0
AV BREAKDOWNS PER DAY	0.00
AV QUEUE DELAY/DAY (VEH-H)	0.0
AV TOTAL DELAY/DAY (VEH-H)	0.0

*----- SITE ACCIDENT DELAYS -----*	
BREAKDOWN DURATION (MINS)	0
RANGE OF QUEUE DELAY - MIN (VEH-H) MAX	0
AV BREAKDOWNS PER DAY	0
AV QUEUE DELAY/DAY (VEH-H)	0
AV TOTAL DELAY/DAY (VEH-H)	0

AVERAGE ACCIDENT NUMBERS (PIA/DAY)	
MAIN ROUTE WITHOUT WORKS	0.0134
MAIN ROUTE WITH WORKS	0.0129
'DIVERSION'	0.0000
<small>PIA: Personal Injury Accidents</small>	
IMPACTS ON ROAD USERS	
ROAD USER COSTS PER DAY	\$940
CONGESTED HOURS PER DAY*	0

\*Delays Exceeding User-Specified Maximum

**STH 441: USH 10 TO CTH CE (OUTAGAMIE COUNTY)  
OFF-PEAK DAY CLOSURE  
NO DIVERSION ROUTE (MAX QUEUE METHOD)**

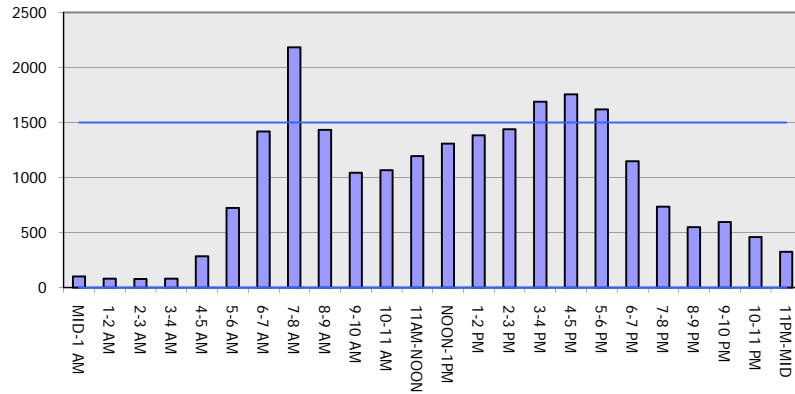
**OCTOBER**

Analyzed for 2009  
Construction Season

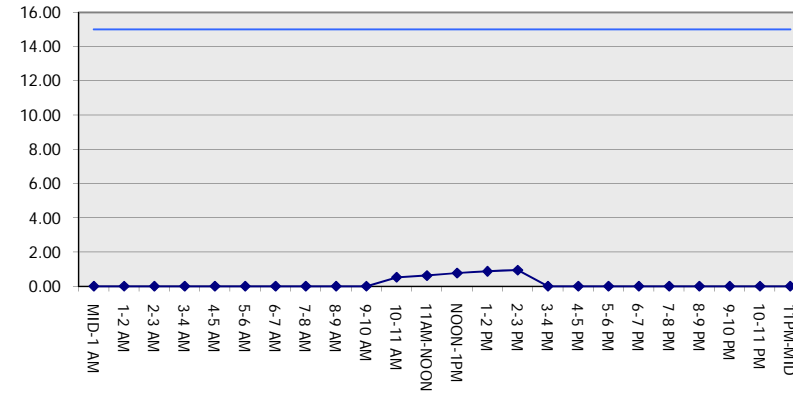
**GRAPHICAL REPRESENTATION OF TRAFFIC MODEL INPUT AND OUTPUT**

**FRIDAY SOUTHBOUND DIRECTION**

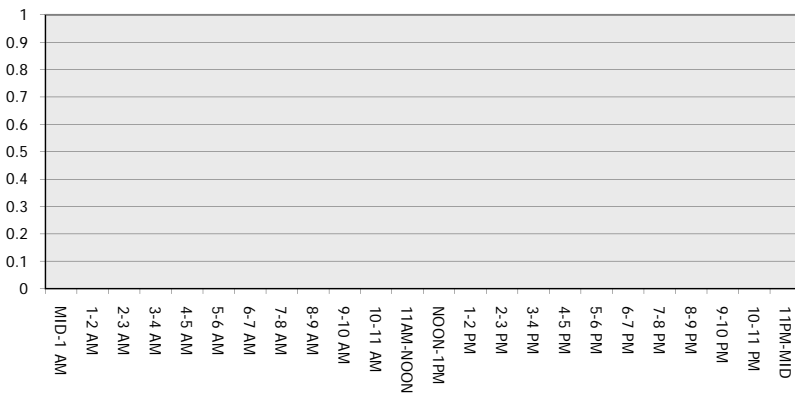
**Main Route - Traffic Demand (Vehicles Per Hour)**



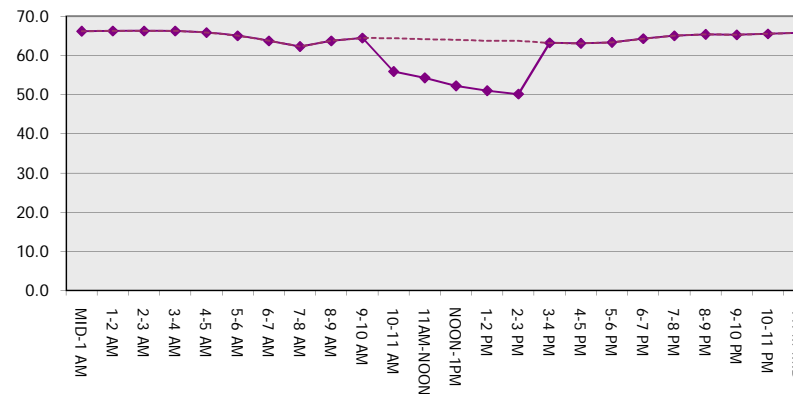
**Main Route Average Delay Per Vehicle (Minutes)**



**Main Route - Average Queue Length (Vehicles)**



**Main Route - Average Speed (MPH)**



<b>STH 441: USH 10 TO CTH CE (OUTAGAMIE COUNTY)</b> <b>OFF-PEAK DAY CLOSURE</b> <b>NO DIVERSION ROUTE (MAX QUEUE METHOD)</b>	<b>OCTOBER</b>
	Analyzed for 2009 Construction Season

**SUMMARY OF TRAFFIC MODEL OUTPUT**

FRIDAY NORTHBOUND DIRECTION

TIME OF DAY	FLOWS AND CAPACITY IN VEH/HR						AVERAGE SPEEDS IN MPH			
	MAIN ROUTE		SITE CAPA CITY	FLOW		AV.DEL PER VEH (MINS)	AVERAGE QUEUE (VEH)	MAIN ROUTE		SITE
	DEMAND FLOW	PCT HEAVY		MAIN ROUTE	'DIVER TED'			WITHOUT WORK ZONE	WITH WORK ZONE	
MID-1 AM	224	0.0	OFF	224	0	0.00	0	66.0	66.0	66.0
1-2 AM	147	0.0	OFF	147	0	0.00	0	66.1	66.1	66.1
2-3 AM	117	0.0	OFF	117	0	0.00	0	66.1	66.1	66.1
3-4 AM	67	0.0	OFF	67	0	0.00	0	66.3	66.3	66.3
4-5 AM	132	0.0	OFF	132	0	0.00	0	66.1	66.1	66.1
5-6 AM	450	0.0	OFF	450	0	0.00	0	65.6	65.6	65.6
6-7 AM	1156	0.0	OFF	1156	0	0.00	0	64.2	64.2	64.2
7-8 AM	1826	0.0	OFF	1826	0	0.00	0	63.0	63.0	63.0
8-9 AM	1414	0.0	OFF	1414	0	0.00	0	63.8	63.8	63.8
9-10 AM	1149	0.0	OFF	1149	0	0.00	0	64.3	64.3	64.3
10-11 AM	1247	0.0	1500	1247	0	0.70	0	64.1	53.3	37.0
11AM-NOON	1448	0.0	1499	1448	0	0.96	0	63.7	49.9	31.9
NOON-1PM	1526	0.0	1499	1526	0	1.28	7	63.5	46.5	30.8
1-2 PM	1628	0.0	1500	1628	0	3.49	72	63.3	31.7	30.8
2-3 PM	2071	0.0	1500	1736	335	12.91+	335	62.5	13.5	30.8
3-4 PM	2413	0.0	OFF	2413	0	0.97	47	61.8	48.7	48.7
4-5 PM	2757	0.0	OFF	2757	0	0.00	0	58.2	58.2	58.2
5-6 PM	2382	0.0	OFF	2382	0	0.00	0	62.0	62.0	62.0
6-7 PM	1678	0.0	OFF	1678	0	0.00	0	63.3	63.3	63.3
7-8 PM	1069	0.0	OFF	1069	0	0.00	0	64.4	64.4	64.4
8-9 PM	894	0.0	OFF	894	0	0.00	0	64.7	64.7	64.7
9-10 PM	798	0.0	OFF	798	0	0.00	0	64.9	64.9	64.9
10-11 PM	722	0.0	OFF	722	0	0.00	0	65.0	65.0	65.0
11PM-MID	479	0.0	OFF	479	0	0.00	0	65.5	65.5	65.5

"OFF" INDICATES NO ROAD WORK (ALL LANES OPEN TO TRAFFIC)

+ INDICATES QUEUEING EXCEEDS USER-SPECIFIED MAXIMUM LIMIT

*----- SITE BREAKDOWN DELAYS -----*	
BREAKDOWN DURATION (MINS)	0
RANGE OF QUEUE DELAY - MIN	0.0
(VEH-H) MAX	0.0
AV BREAKDOWNS PER DAY	0.00
AV QUEUE DELAY/DAY (VEH-H)	0.0
AV TOTAL DELAY/DAY (VEH-H)	0.0

*----- SITE ACCIDENT DELAYS -----*	
BREAKDOWN DURATION (MINS)	0
RANGE OF QUEUE DELAY - MIN	0
(VEH-H) MAX	0
AV BREAKDOWNS PER DAY	0
AV QUEUE DELAY/DAY (VEH-H)	0
AV TOTAL DELAY/DAY (VEH-H)	0

AVERAGE ACCIDENT NUMBERS (PIA/DAY)	
MAIN ROUTE WITHOUT WORKS	0.0164
MAIN ROUTE WITH WORKS	0.0157
'DIVERSION'	0.0005

PIA: Personal Injury Accidents

ECONOMIC IMPACT ON ROAD USERS	
ROAD USER COSTS PER DAY	\$7,442
CONGESTED HOURS PER DAY*	1

\*Delays Exceeding User-Specified Maximum

**STH 441: USH 10 TO CTH CE (OUTAGAMIE COUNTY)  
OFF-PEAK DAY CLOSURE  
NO DIVERSION ROUTE (MAX QUEUE METHOD)**

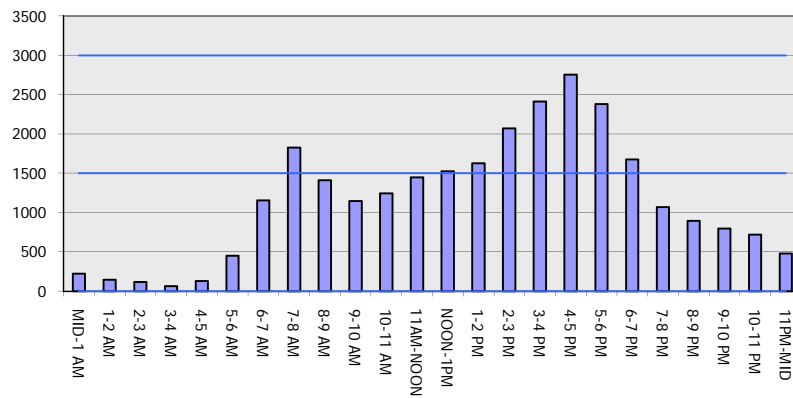
**OCTOBER**

Analyzed for 2009  
Construction Season

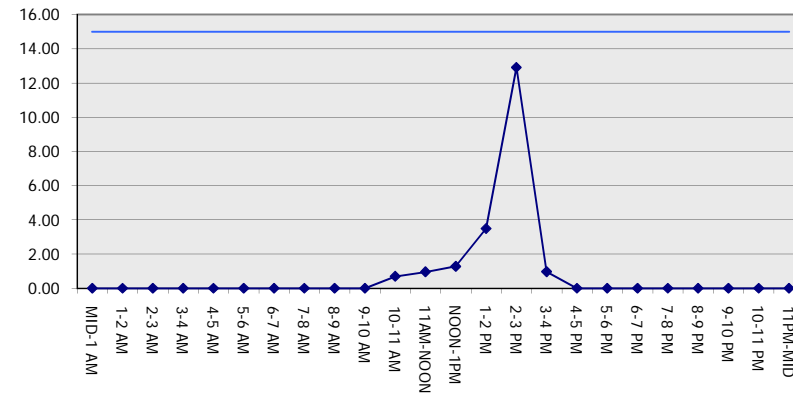
**GRAPHICAL REPRESENTATION OF TRAFFIC MODEL INPUT AND OUTPUT**

**FRIDAY NORTHBOUND DIRECTION**

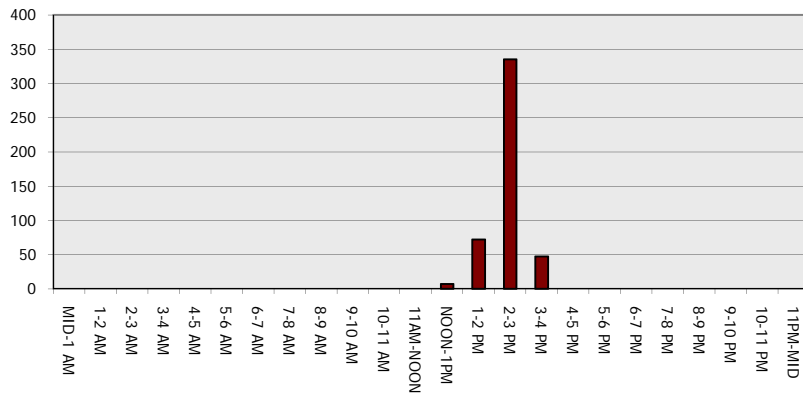
**Main Route - Traffic Demand (Vehicles Per Hour)**



**Main Route Average Delay Per Vehicle (Minutes)**



**Main Route - Average Queue Length (Vehicles)**



**Main Route - Average Speed (MPH)**

