

STH 441: CTH 00 TO CTH CE (OUTAGAMIE COUNTY) OFF-PEAK DAY CLOSURE DIVERSION ROUTE: CTH CE - CTH N - CTH 00	OCTOBER
	Analyzed for 2009 Construction Season

SUMMARY OF TRAFFIC MODEL OUTPUT

SUNDAY SOUTHBOUND DIRECTION

TIME OF DAY	FLOWS AND CAPACITY IN VEH/HR							AVERAGE SPEEDS IN MPH							
	MAIN ROUTE		ALTERNATE ROUTE		SITE CAPA CITY	FLOW MAIN ROUTE	FLOW DIVER -TING	TOTAL DIVN FLOW	AV.DEL PER VEH (MINS)	AVERAGE QUEUE (VEH)	MAIN ROUTE		ALTERNATE ROUTE		
	DEMAND FLOW	PCT HEAVY	NORMAL FLOW	PCT HEAVY							WITHOUT WORK ZN	WITH WORK ZN	SITE	WITHOUT WORK ZN	WITH WORK ZN
MID-1 AM	228	0.0	83	0.0	OFF	228	0	83	0.00	0	66.0	66.0	66.0	24.2	24.2
1-2 AM	116	0.0	53	0.0	OFF	116	0	53	0.00	0	66.2	66.2	66.2	24.5	24.5
2-3 AM	83	0.0	54	0.0	OFF	83	0	54	0.00	0	66.3	66.3	66.3	24.4	24.4
3-4 AM	66	0.0	32	0.0	OFF	66	0	32	0.00	0	66.3	66.3	66.3	24.6	24.6
4-5 AM	87	0.0	37	0.0	OFF	87	0	37	0.00	0	66.2	66.2	66.2	24.5	24.5
5-6 AM	120	0.0	66	0.0	OFF	120	0	66	0.00	0	66.1	66.1	66.1	24.3	24.3
6-7 AM	206	0.0	89	0.0	OFF	206	0	89	0.00	0	66.0	66.0	66.0	24.2	24.2
7-8 AM	335	0.0	112	0.0	OFF	335	0	112	0.00	0	65.8	65.8	65.8	24.0	24.0
8-9 AM	574	0.0	181	0.0	OFF	574	0	181	0.00	0	65.3	65.3	65.3	23.5	23.5
9-10 AM	909	0.0	266	0.0	1500	909	0	266	0.51	0	64.7	50.7	42.0	22.8	22.8
10-11 AM	1242	0.0	365	0.0	1500	1242	0	365	0.69	0	64.1	46.8	37.1	22.0	22.0
11A-NOON	1414	0.0	387	0.0	1500	1414	0	387	0.91	0	63.8	42.9	32.7	21.9	21.9
NOON-1PM	1432	0.0	426	0.0	1500	1432	0	426	0.94	0	63.7	42.5	32.2	21.5	21.5
1-2 PM	1444	0.0	369	0.0	1500	1444	0	369	0.95	0	63.7	42.3	32.0	22.0	22.0
2-3 PM	1401	0.0	357	0.0	1500	1401	0	357	0.90	0	63.8	43.2	33.0	22.1	22.1
3-4 PM	1372	0.0	365	0.0	1500	1372	0	365	0.86	0	63.8	43.8	33.7	22.0	22.0
4-5 PM	1446	0.0	410	0.0	1500	1446	0	410	0.95	0	63.7	42.3	31.9	21.7	21.7
5-6 PM	1325	0.0	383	0.0	1500	1325	0	383	0.80	0	63.9	44.8	34.8	21.9	21.9
6-7 PM	1091	0.0	312	0.0	1500	1091	0	312	0.53	0	64.3	50.2	41.4	22.4	22.4
7-8 PM	921	0.0	221	0.0	OFF	921	0	221	0.00	0	64.6	64.6	64.6	23.2	23.2
8-9 PM	712	0.0	166	0.0	OFF	712	0	166	0.00	0	65.1	65.1	65.1	23.6	23.6
9-10 PM	494	0.0	137	0.0	OFF	494	0	137	0.00	0	65.5	65.5	65.5	23.8	23.8
10-11 PM	341	0.0	97	0.0	OFF	341	0	97	0.00	0	65.8	65.8	65.8	24.1	24.1
11PM-MID	212	0.0	44	0.0	OFF	212	0	44	0.00	0	66.0	66.0	66.0	24.5	24.5

"OFF" INDICATES NO ROAD WORK (ALL LANES OPEN TO TRAFFIC)

----- SITE BREAKDOWN DELAYS -----	
BREAKDOWN DURATION (MINS)	0
RANGE OF QUEUE DELAY - MIN	0.0
(VEH-H) MAX	0.0
RANGE OF DIVN DELAY - MIN	0.0
(VEH-H) MAX	0.0
AV BREAKDOWNS PER DAY	0.00
AV QUEUE DELAY/DAY (VEH-H)	0.0
AV DIVN DELAY/DAY (VEH-H)	0.0
AV TOTAL DELAY/DAY (VEH-H)	0.0

----- SITE ACCIDENT DELAYS -----	
ACCIDENT DURATION (MINS)	0
RANGE OF QUEUE DELAY - MIN	0.0
(VEH-H) MAX	0.0
RANGE OF DIVN DELAY - MIN	0.0
(VEH-H) MAX	0.0
AV ACCIDENTS PER DAY	0.00
AV QUEUE DELAY/DAY (VEH-H)	0.0
AV DIVN DELAY/DAY (VEH-H)	0.0
AV TOTAL DELAY/DAY (VEH-H)	0.0

AVERAGE ACCIDENT NUMBERS (PIA/DAY)	
MAIN ROUTE WITHOUT WORKS	0.0056
MAIN ROUTE WITH WORKS	0.0047
DIVERSION	0.0371

PIA: Personal Injury Accidents

IMPACTS ON ROAD USERS	
ROAD USER COSTS PER DAY (DOLLARS)	\$3,300
CONGESTED HOURS PER DAY*	0

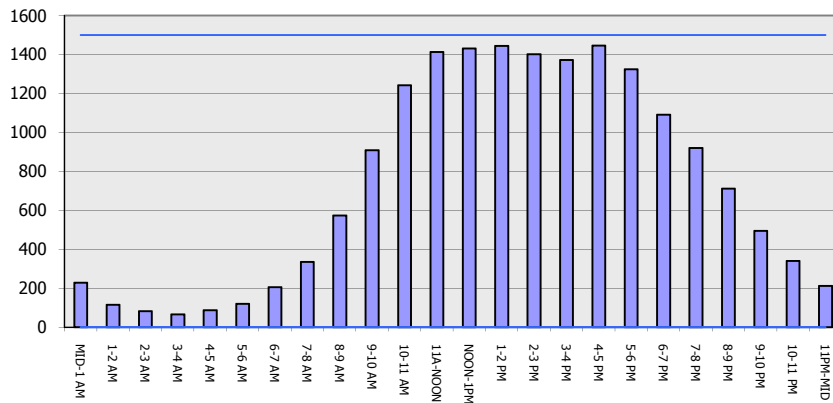
*Delays Exceeding 15 Minutes

STH 441: CTH 00 TO CTH CE (OUTAGAMIE COUNTY)
OFF-PEAK DAY CLOSURE
DIVERSION ROUTE: CTH CE - CTH N - CTH 00

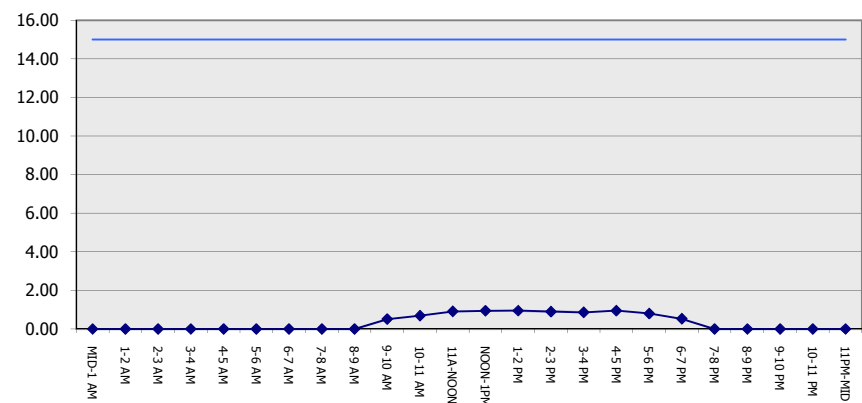
OCTOBER
 Analyzed for 2009
 Construction Season

GRAPHICAL REPRESENTATION OF TRAFFIC MODEL INPUT AND OUTPUT
SUNDAY SOUTHBOUND DIRECTION

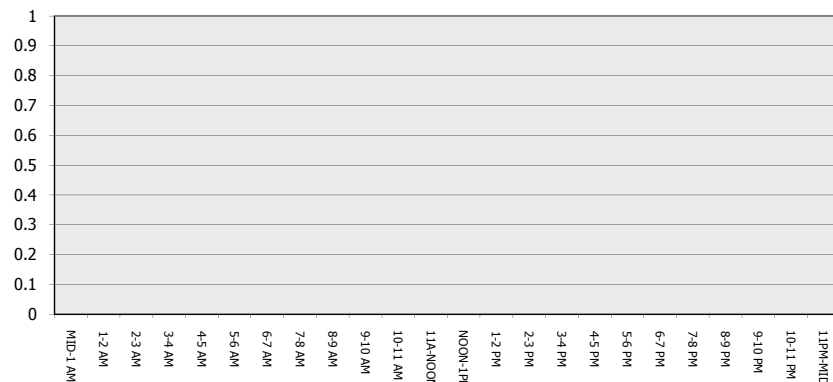
Main Route - Traffic Demand (Vehicles Per Hour)



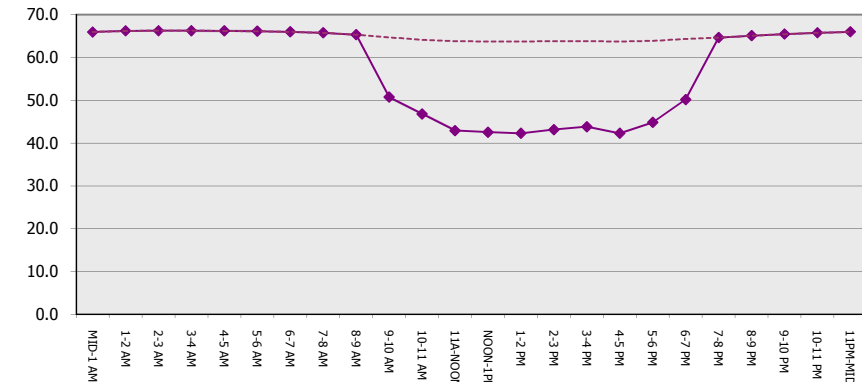
Main Route Average Delay Per Vehicle (Minutes)



Main Route - Average Queue Length (Vehicles)



Main Route - Average Speed (MPH)



**STH 441: CTH OO TO CTH CE (OUTAGAMIE COUNTY)
OFF-PEAK DAY CLOSURE
DIVERSION ROUTE: CTH CE - CTH N - CTH OO**

OCTOBER
Analyzed for 2009
Construction Season

SUMMARY OF TRAFFIC MODEL OUTPUT
SUNDAY NORTHBOUND DIRECTION

TIME OF DAY	FLOWS AND CAPACITY IN VEH/HR								AVERAGE SPEEDS IN MPH						
	MAIN		DIVERSION		SITE CAPA CITY	FLOW MAIN ROUTE	FLOW DIVER -TING	TOTAL DIVN FLOW	AV.DEL PER VEH (MINS)	AVERAGE QUEUE (VEH)	MAIN ROUTE		SITE	ALTERNATE ROUTE	
	DEMAND FLOW	PCT HEAVY	NORMAL FLOW	PCT HEAVY							WITHOUT WORK ZN	WITH WORK ZN		WITHOUT WORK ZN	WITH WORK ZN
MID-1 AM	201	0.0	109	0.0	OFF	201	0	109	0.00	0	66.0	66.0	66.0	24.0	24.0
1-2 AM	141	0.0	64	0.0	OFF	141	0	64	0.00	0	66.1	66.1	66.1	24.3	24.3
2-3 AM	115	0.0	69	0.0	OFF	115	0	69	0.00	0	66.2	66.2	66.2	24.3	24.3
3-4 AM	93	0.0	38	0.0	OFF	93	0	38	0.00	0	66.2	66.2	66.2	24.5	24.5
4-5 AM	84	0.0	32	0.0	OFF	84	0	32	0.00	0	66.2	66.2	66.2	24.6	24.6
5-6 AM	113	0.0	65	0.0	OFF	113	0	65	0.00	0	66.2	66.2	66.2	24.3	24.3
6-7 AM	157	0.0	104	0.0	OFF	157	0	104	0.00	0	66.1	66.1	66.1	24.0	24.0
7-8 AM	244	0.0	116	0.0	OFF	244	0	116	0.00	0	66.0	66.0	66.0	24.0	24.0
8-9 AM	494	0.0	205	0.0	OFF	494	0	205	0.00	0	65.5	65.5	65.5	23.3	23.3
9-10 AM	818	0.0	306	0.0	1500	818	0	306	0.50	0	64.8	51.0	42.4	22.5	22.5
10-11 AM	1293	0.0	386	0.0	1499	1293	0	386	0.75	0	64.0	45.7	36.0	21.9	21.9
11A-NOON	1740	0.0	470	0.0	1499	1740	0	470	3.96	100	63.2	20.6	30.8	21.2	21.2
NOON-1PM	1928	0.0	465	0.0	1500	1760	169	634	15.88	408	62.8	9.0	30.8	21.3	21.3
1-2 PM	1971	0.0	443	0.0	1499	1508	463	906	19.66	503	62.7	8.2	30.8	21.4	19.6
2-3 PM	2018	0.0	471	0.0	1500	1525	494	965	20.23	519	62.6	8.1	30.8	21.2	19.2
3-4 PM	2205	0.0	491	0.0	1500	1565	639	1130	22.00	567	62.3	7.8	30.8	21.1	18.1
4-5 PM	2373	0.0	543	0.0	1500	1578	795	1337	24.66	640	62.0	7.5	30.8	20.7	16.7
5-6 PM	2535	0.0	537	0.0	1500	1547	988	1525	27.56	720	60.5	7.2	30.8	20.7	15.5
6-7 PM	2018	0.0	462	0.0	1499	1274	744	1207	23.05	598	62.6	7.7	30.8	21.3	17.6
7-8 PM	1596	0.0	376	0.0	OFF	1596	0	376	0.80	51	63.4	44.5	44.5	22.0	22.0
8-9 PM	1259	0.0	261	0.0	OFF	1259	0	261	0.00	0	64.0	64.0	64.0	22.9	22.9
9-10 PM	855	0.0	194	0.0	OFF	855	0	194	0.00	0	64.8	64.8	64.8	23.3	23.3
10-11 PM	500	0.0	148	0.0	OFF	500	0	148	0.00	0	65.5	65.5	65.5	23.7	23.7
11PM-MID	260	0.0	80	0.0	OFF	260	0	80	0.00	0	65.9	65.9	65.9	24.2	24.2

"OFF" INDICATES NO ROAD WORK (ALL LANES OPEN TO TRAFFIC)

----- SITE BREAKDOWN DELAYS -----	
BREAKDOWN DURATION (MINS)	0
RANGE OF QUEUE DELAY - MIN	0.0
(VEH-H) MAX	0.0
RANGE OF DIVN DELAY - MIN	0.0
(VEH-H) MAX	0.0
AV BREAKDOWNS PER DAY	0.00
AV QUEUE DELAY/DAY (VEH-H)	0.0
AV DIVN DELAY/DAY (VEH-H)	0.0
AV TOTAL DELAY/DAY (VEH-H)	0.0

----- SITE ACCIDENT DELAYS -----	
ACCIDENT DURATION (MINS)	0
RANGE OF QUEUE DELAY - MIN	0.0
(VEH-H) MAX	0.0
RANGE OF DIVN DELAY - MIN	0.0
(VEH-H) MAX	0.0
AV ACCIDENTS PER DAY	0.00
AV QUEUE DELAY/DAY (VEH-H)	0.0
AV DIVN DELAY/DAY (VEH-H)	0.0
AV TOTAL DELAY/DAY (VEH-H)	0.0

AVERAGE ACCIDENT NUMBERS (PIA/DAY)	
MAIN ROUTE WITHOUT WORKS	0.0080
MAIN ROUTE WITH WORKS	0.0056
DIVERSION	0.0794

PIA: Personal Injury Accidents

IMPACTS ON ROAD USERS	
ROAD USER COSTS PER DAY (DOLLARS)	\$105,049
CONGESTED HOURS PER DAY*	7

*Delays Exceeding 15 Minutes

STH 441: CTH 00 TO CTH CE (OUTAGAMIE COUNTY)
OFF-PEAK DAY CLOSURE
DIVERSION ROUTE: CTH CE - CTH N - CTH 00

OCTOBER
 Analyzed for 2009
 Construction Season

GRAPHICAL REPRESENTATION OF TRAFFIC MODEL INPUT AND OUTPUT
SUNDAY NORTHBOUND DIRECTION

