

STH 441: CTH 00 TO CTH CE (OUTAGAMIE COUNTY)
OFF-PEAK DAY CLOSURE
DIVERSION ROUTE: CTH CE - CTH N - CTH 00

AUGUST
 Analyzed for 2009
 Construction Season

SUMMARY OF TRAFFIC MODEL OUTPUT
 SUNDAY SOUTHBOUND DIRECTION

| TIME OF DAY | FLOWS AND CAPACITY IN VEH/HR | | | | | | | AVERAGE SPEEDS IN MPH | | | | | | | |
|-------------|------------------------------|-----------|-----------------|-----------|----------------|-----------------|------------------|-----------------------|-----------------------|---------------------|-----------------|--------------|-----------------|-----------------|--------------|
| | MAIN ROUTE | | ALTERNATE ROUTE | | SITE CAPA CITY | FLOW MAIN ROUTE | FLOW DIVER -TING | TOTAL DIVN FLOW | AV.DEL PER VEH (MINS) | AVERAGE QUEUE (VEH) | MAIN ROUTE | | ALTERNATE ROUTE | | |
| | DEMAND FLOW | PCT HEAVY | NORMAL FLOW | PCT HEAVY | | | | | | | WITHOUT WORK ZN | WITH WORK ZN | SITE | WITHOUT WORK ZN | WITH WORK ZN |
| MID-1 AM | 326 | 0.0 | 89 | 0.0 | OFF | 326 | 0 | 89 | 0.00 | 0 | 65.8 | 65.8 | 65.8 | 24.2 | 24.2 |
| 1-2 AM | 176 | 0.0 | 58 | 0.0 | OFF | 176 | 0 | 58 | 0.00 | 0 | 66.1 | 66.1 | 66.1 | 24.4 | 24.4 |
| 2-3 AM | 89 | 0.0 | 48 | 0.0 | OFF | 89 | 0 | 48 | 0.00 | 0 | 66.2 | 66.2 | 66.2 | 24.5 | 24.5 |
| 3-4 AM | 72 | 0.0 | 35 | 0.0 | OFF | 72 | 0 | 35 | 0.00 | 0 | 66.3 | 66.3 | 66.3 | 24.6 | 24.6 |
| 4-5 AM | 74 | 0.0 | 36 | 0.0 | OFF | 74 | 0 | 36 | 0.00 | 0 | 66.3 | 66.3 | 66.3 | 24.6 | 24.6 |
| 5-6 AM | 128 | 0.0 | 74 | 0.0 | OFF | 128 | 0 | 74 | 0.00 | 0 | 66.1 | 66.1 | 66.1 | 24.3 | 24.3 |
| 6-7 AM | 243 | 0.0 | 100 | 0.0 | OFF | 243 | 0 | 100 | 0.00 | 0 | 66.0 | 66.0 | 66.0 | 24.1 | 24.1 |
| 7-8 AM | 463 | 0.0 | 110 | 0.0 | OFF | 463 | 0 | 110 | 0.00 | 0 | 65.5 | 65.5 | 65.5 | 24.0 | 24.0 |
| 8-9 AM | 777 | 0.0 | 162 | 0.0 | OFF | 777 | 0 | 162 | 0.00 | 0 | 65.0 | 65.0 | 65.0 | 23.6 | 23.6 |
| 9-10 AM | 1178 | 0.0 | 237 | 0.0 | 1499 | 1178 | 0 | 237 | 0.63 | 0 | 64.2 | 48.0 | 38.7 | 23.0 | 23.0 |
| 10-11 AM | 1621 | 0.0 | 363 | 0.0 | 1499 | 1621 | 0 | 363 | 2.16 | 38 | 63.3 | 29.6 | 30.8 | 22.0 | 22.0 |
| 11A-NOON | 1874 | 0.0 | 405 | 0.0 | 1500 | 1842 | 32 | 437 | 11.40 | 297 | 62.9 | 10.7 | 30.8 | 21.7 | 22.2 |
| NOON-1PM | 1810 | 0.0 | 442 | 0.0 | 1499 | 1500 | 311 | 752 | 18.30 | 466 | 63.0 | 8.4 | 30.8 | 21.4 | 20.6 |
| 1-2 PM | 1683 | 0.0 | 430 | 0.0 | 1499 | 1470 | 212 | 643 | 17.43 | 443 | 63.3 | 8.6 | 30.8 | 21.5 | 21.4 |
| 2-3 PM | 1642 | 0.0 | 422 | 0.0 | 1500 | 1491 | 151 | 573 | 16.91 | 428 | 63.3 | 8.7 | 30.8 | 21.6 | 21.9 |
| 3-4 PM | 1566 | 0.0 | 390 | 0.0 | 1499 | 1481 | 85 | 475 | 16.24 | 410 | 63.5 | 8.9 | 30.8 | 21.9 | 22.5 |
| 4-5 PM | 1605 | 0.0 | 350 | 0.0 | 1500 | 1501 | 104 | 454 | 16.09 | 406 | 63.4 | 8.9 | 30.8 | 22.2 | 22.7 |
| 5-6 PM | 1585 | 0.0 | 340 | 0.0 | 1500 | 1487 | 99 | 438 | 16.00 | 404 | 63.4 | 8.9 | 30.8 | 22.2 | 22.8 |
| 6-7 PM | 1234 | 0.0 | 302 | 0.0 | 1499 | 1234 | 0 | 302 | 10.81 | 276 | 64.1 | 10.9 | 31.7 | 22.5 | 23.2 |
| 7-8 PM | 1052 | 0.0 | 225 | 0.0 | OFF | 1052 | 0 | 225 | 0.05 | 2 | 64.4 | 62.8 | 62.8 | 23.1 | 23.1 |
| 8-9 PM | 876 | 0.0 | 188 | 0.0 | OFF | 876 | 0 | 188 | 0.00 | 0 | 64.8 | 64.8 | 64.8 | 23.4 | 23.4 |
| 9-10 PM | 640 | 0.0 | 180 | 0.0 | OFF | 640 | 0 | 180 | 0.00 | 0 | 65.2 | 65.2 | 65.2 | 23.5 | 23.5 |
| 10-11 PM | 459 | 0.0 | 129 | 0.0 | OFF | 459 | 0 | 129 | 0.00 | 0 | 65.5 | 65.5 | 65.5 | 23.8 | 23.8 |
| 11PM-MID | 296 | 0.0 | 112 | 0.0 | OFF | 296 | 0 | 112 | 0.00 | 0 | 65.8 | 65.8 | 65.8 | 24.0 | 24.0 |

"OFF" INDICATES NO ROAD WORK (ALL LANES OPEN TO TRAFFIC)

| *----- SITE BREAKDOWN DELAYS -----* | |
|-------------------------------------|------|
| BREAKDOWN DURATION (MINS) | 0 |
| RANGE OF QUEUE DELAY - MIN | 0.0 |
| (VEH-H) MAX | 0.0 |
| RANGE OF DIVN DELAY - MIN | 0.0 |
| (VEH-H) MAX | 0.0 |
| AV BREAKDOWNS PER DAY | 0.00 |
| AV QUEUE DELAY/DAY (VEH-H) | 0.0 |
| AV DIVN DELAY/DAY (VEH-H) | 0.0 |
| AV TOTAL DELAY/DAY (VEH-H) | 0.0 |

| *----- SITE ACCIDENT DELAYS -----* | |
|------------------------------------|------|
| ACCIDENT DURATION (MINS) | 0 |
| RANGE OF QUEUE DELAY - MIN | 0.0 |
| (VEH-H) MAX | 0.0 |
| RANGE OF DIVN DELAY - MIN | 0.0 |
| (VEH-H) MAX | 0.0 |
| AV ACCIDENTS PER DAY | 0.00 |
| AV QUEUE DELAY/DAY (VEH-H) | 0.0 |
| AV DIVN DELAY/DAY (VEH-H) | 0.0 |
| AV TOTAL DELAY/DAY (VEH-H) | 0.0 |

| AVERAGE ACCIDENT NUMBERS (PIA/DAY) | |
|------------------------------------|--------|
| MAIN ROUTE WITHOUT WORKS | 0.0068 |
| MAIN ROUTE WITH WORKS | 0.0055 |
| DIVERSION | 0.0460 |

PIA: Personal Injury Accidents

| IMPACTS ON ROAD USERS | |
|------------------------------------|----------|
| ROAD USER COSTS PER DAY (DOLLARS) | \$62,580 |
| CONGESTED HOURS PER DAY* | 6 |

*Delays Exceeding 15 Minutes

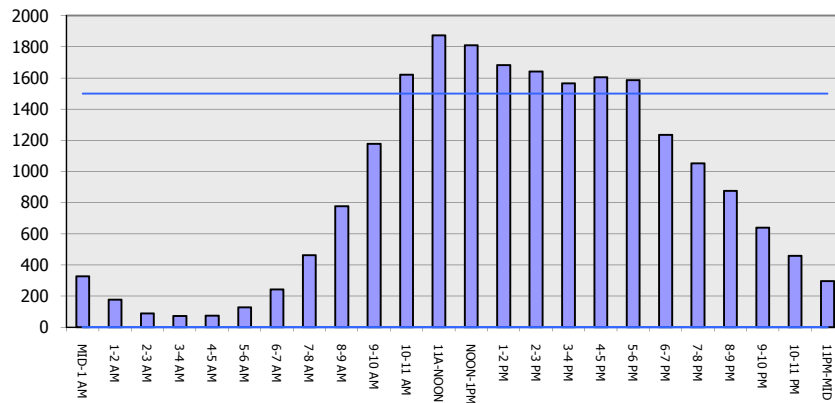
STH 441: CTH 00 TO CTH CE (OUTAGAMIE COUNTY)
OFF-PEAK DAY CLOSURE
DIVERSION ROUTE: CTH CE - CTH N - CTH 00

AUGUST
 Analyzed for 2009
 Construction Season

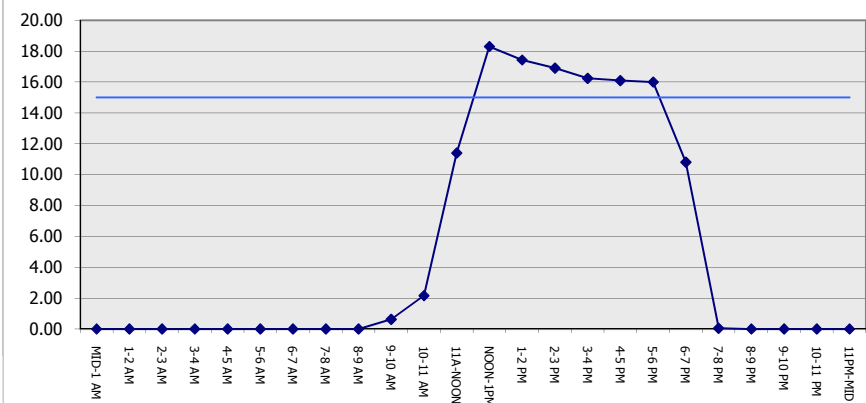
GRAPHICAL REPRESENTATION OF TRAFFIC MODEL INPUT AND OUTPUT

SUNDAY SOUTHBOUND DIRECTION

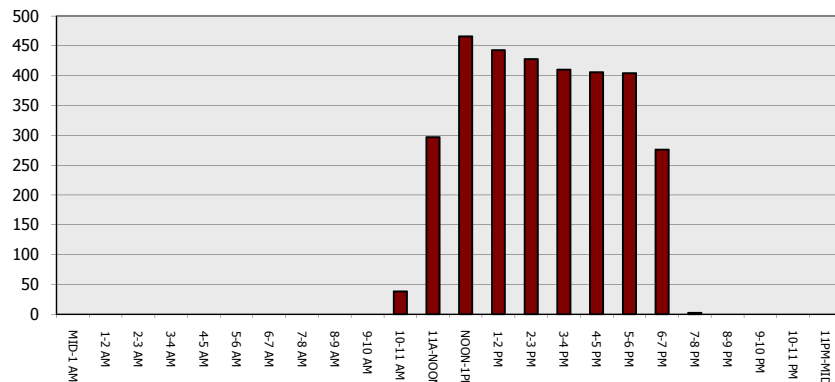
Main Route - Traffic Demand (Vehicles Per Hour)



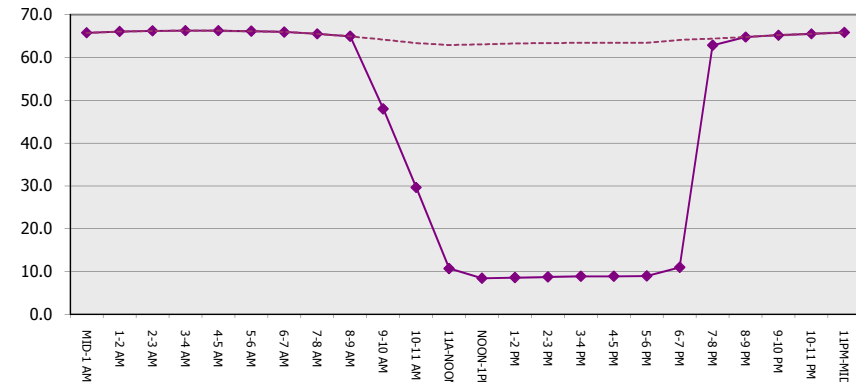
Main Route Average Delay Per Vehicle (Minutes)



Main Route - Average Queue Length (Vehicles)



Main Route - Average Speed (MPH)



**STH 441: CTH 00 TO CTH CE (OUTAGAMIE COUNTY)
OFF-PEAK DAY CLOSURE
DIVERSION ROUTE: CTH CE - CTH N - CTH 00**

AUGUST
Analyzed for 2009
Construction Season

SUMMARY OF TRAFFIC MODEL OUTPUT
SUNDAY NORTHBOUND DIRECTION

| TIME OF DAY | FLOWS AND CAPACITY IN VEH/HR | | | | | | | | AVERAGE SPEEDS IN MPH | | | | | | |
|-------------|------------------------------|-----------|-------------|-----------|----------------|-----------------|------------------|-----------------|-----------------------|---------------------|-----------------|--------------|-----------------|-----------------|--------------|
| | MAIN | | DIVERSION | | SITE CAPA CITY | FLOW MAIN ROUTE | FLOW DIVER -TING | TOTAL DIVN FLOW | AV.DEL PER VEH (MINS) | AVERAGE QUEUE (VEH) | MAIN ROUTE | | ALTERNATE ROUTE | | |
| | DEMAND FLOW | PCT HEAVY | NORMAL FLOW | PCT HEAVY | | | | | | | WITHOUT WORK ZN | WITH WORK ZN | SITE | WITHOUT WORK ZN | WITH WORK ZN |
| MID-1 AM | 370 | 0.0 | 120 | 0.0 | OFF | 370 | 0 | 120 | 0.00 | 0 | 65.7 | 65.7 | 65.7 | 23.9 | 23.9 |
| 1-2 AM | 176 | 0.0 | 75 | 0.0 | OFF | 176 | 0 | 75 | 0.00 | 0 | 66.1 | 66.1 | 66.1 | 24.3 | 24.3 |
| 2-3 AM | 129 | 0.0 | 56 | 0.0 | OFF | 129 | 0 | 56 | 0.00 | 0 | 66.1 | 66.1 | 66.1 | 24.4 | 24.4 |
| 3-4 AM | 106 | 0.0 | 38 | 0.0 | OFF | 106 | 0 | 38 | 0.00 | 0 | 66.2 | 66.2 | 66.2 | 24.5 | 24.5 |
| 4-5 AM | 96 | 0.0 | 31 | 0.0 | OFF | 96 | 0 | 31 | 0.00 | 0 | 66.2 | 66.2 | 66.2 | 24.6 | 24.6 |
| 5-6 AM | 128 | 0.0 | 56 | 0.0 | OFF | 128 | 0 | 56 | 0.00 | 0 | 66.1 | 66.1 | 66.1 | 24.4 | 24.4 |
| 6-7 AM | 188 | 0.0 | 114 | 0.0 | OFF | 188 | 0 | 114 | 0.00 | 0 | 66.0 | 66.0 | 66.0 | 24.0 | 24.0 |
| 7-8 AM | 313 | 0.0 | 92 | 0.0 | OFF | 313 | 0 | 92 | 0.00 | 0 | 65.8 | 65.8 | 65.8 | 24.2 | 24.2 |
| 8-9 AM | 573 | 0.0 | 163 | 0.0 | OFF | 573 | 0 | 163 | 0.00 | 0 | 65.3 | 65.3 | 65.3 | 23.6 | 23.6 |
| 9-10 AM | 963 | 0.0 | 251 | 0.0 | 1499 | 963 | 0 | 251 | 0.52 | 0 | 64.6 | 50.5 | 41.8 | 22.9 | 22.9 |
| 10-11 AM | 1472 | 0.0 | 363 | 0.0 | 1499 | 1472 | 0 | 363 | 1.26 | 11 | 63.7 | 38.1 | 32.4 | 22.0 | 22.0 |
| 11A-NOON | 1910 | 0.0 | 444 | 0.0 | 1500 | 1910 | 0 | 444 | 8.52 | 232 | 62.8 | 12.8 | 30.8 | 21.4 | 21.9 |
| NOON-1PM | 2042 | 0.0 | 464 | 0.0 | 1499 | 1581 | 460 | 925 | 19.84 | 509 | 62.6 | 8.1 | 30.8 | 21.3 | 19.4 |
| 1-2 PM | 2094 | 0.0 | 524 | 0.0 | 1499 | 1534 | 560 | 1084 | 21.47 | 553 | 62.5 | 7.9 | 30.8 | 20.8 | 18.4 |
| 2-3 PM | 2261 | 0.0 | 521 | 0.0 | 1500 | 1555 | 706 | 1227 | 23.17 | 599 | 62.2 | 7.6 | 30.8 | 20.9 | 17.5 |
| 3-4 PM | 2367 | 0.0 | 573 | 0.0 | 1500 | 1555 | 812 | 1385 | 25.35 | 658 | 62.0 | 7.4 | 30.8 | 20.4 | 16.4 |
| 4-5 PM | 2351 | 0.0 | 556 | 0.0 | 1499 | 1488 | 863 | 1419 | 25.87 | 672 | 62.0 | 7.4 | 30.8 | 20.6 | 16.1 |
| 5-6 PM | 2421 | 0.0 | 547 | 0.0 | 1500 | 1513 | 909 | 1455 | 26.43 | 688 | 61.7 | 7.3 | 30.8 | 20.6 | 15.9 |
| 6-7 PM | 2048 | 0.0 | 513 | 0.0 | 1499 | 1349 | 699 | 1211 | 23.04 | 596 | 62.6 | 7.7 | 30.8 | 20.9 | 17.5 |
| 7-8 PM | 1874 | 0.0 | 411 | 0.0 | OFF | 1874 | 0 | 411 | 1.03 | 66 | 62.9 | 40.9 | 40.9 | 21.7 | 21.7 |
| 8-9 PM | 1524 | 0.0 | 344 | 0.0 | OFF | 1524 | 0 | 344 | 0.00 | 0 | 63.5 | 63.5 | 63.5 | 22.2 | 22.2 |
| 9-10 PM | 1079 | 0.0 | 264 | 0.0 | OFF | 1079 | 0 | 264 | 0.00 | 0 | 64.4 | 64.4 | 64.4 | 22.8 | 22.8 |
| 10-11 PM | 690 | 0.0 | 178 | 0.0 | OFF | 690 | 0 | 178 | 0.00 | 0 | 65.1 | 65.1 | 65.1 | 23.5 | 23.5 |
| 11PM-MID | 356 | 0.0 | 102 | 0.0 | OFF | 356 | 0 | 102 | 0.00 | 0 | 65.7 | 65.7 | 65.7 | 24.0 | 24.0 |

"OFF" INDICATES NO ROAD WORK (ALL LANES OPEN TO TRAFFIC)

| *----- SITE BREAKDOWN DELAYS -----* | |
|-------------------------------------|------|
| BREAKDOWN DURATION (MINS) | 0 |
| RANGE OF QUEUE DELAY - MIN | 0.0 |
| (VEH-H) MAX | 0.0 |
| RANGE OF DIVN DELAY - MIN | 0.0 |
| (VEH-H) MAX | 0.0 |
| AV BREAKDOWNS PER DAY | 0.00 |
| AV QUEUE DELAY/DAY (VEH-H) | 0.0 |
| AV DIVN DELAY/DAY (VEH-H) | 0.0 |
| AV TOTAL DELAY/DAY (VEH-H) | 0.0 |

| *----- SITE ACCIDENT DELAYS -----* | |
|------------------------------------|------|
| ACCIDENT DURATION (MINS) | 0 |
| RANGE OF QUEUE DELAY - MIN | 0.0 |
| (VEH-H) MAX | 0.0 |
| RANGE OF DIVN DELAY - MIN | 0.0 |
| (VEH-H) MAX | 0.0 |
| AV ACCIDENTS PER DAY | 0.00 |
| AV QUEUE DELAY/DAY (VEH-H) | 0.0 |
| AV DIVN DELAY/DAY (VEH-H) | 0.0 |
| AV TOTAL DELAY/DAY (VEH-H) | 0.0 |

| AVERAGE ACCIDENT NUMBERS (PIA/DAY) | |
|------------------------------------|--------|
| MAIN ROUTE WITHOUT WORKS | 0.0088 |
| MAIN ROUTE WITH WORKS | 0.0062 |
| DIVERSION | 0.0874 |

PIA: Personal Injury Accidents

| IMPACTS ON ROAD USERS | |
|------------------------------------|-----------|
| ROAD USER COSTS PER DAY (DOLLARS) | \$118,696 |
| CONGESTED HOURS PER DAY* | 7 |

*Delays Exceeding 15 Minutes

STH 441: CTH 00 TO CTH CE (OUTAGAMIE COUNTY)
OFF-PEAK DAY CLOSURE
DIVERSION ROUTE: CTH CE - CTH N - CTH 00

AUGUST
 Analyzed for 2009
 Construction Season

GRAPHICAL REPRESENTATION OF TRAFFIC MODEL INPUT AND OUTPUT
SUNDAY NORTHBOUND DIRECTION

