

<b>STH 441: CTH 00 TO CTH CE (OUTAGAMIE COUNTY)</b> <b>OFF-PEAK DAY CLOSURE</b> <b>DIVERSION ROUTE: CTH CE - CTH N - CTH 00</b>	<b>AUGUST</b>
	Analyzed for 2009 Construction Season

**SUMMARY OF TRAFFIC MODEL OUTPUT**

SATURDAY SOUTHBOUND DIRECTION

TIME OF DAY	FLOWS AND CAPACITY IN VEH/HR							AVERAGE SPEEDS IN MPH							
	MAIN ROUTE		ALTERNATE ROUTE		SITE CAPA CITY	FLOW MAIN ROUTE	FLOW DIVER -TING	TOTAL DIVN FLOW	AV.DEL PER VEH (MINS)	AVERAGE QUEUE (VEH)	MAIN ROUTE		ALTERNATE ROUTE		
	DEMAND FLOW	PCT HEAVY	NORMAL FLOW	PCT HEAVY							WITHOUT WORK ZN	WITH WORK ZN	SITE	WITHOUT WORK ZN	WITH WORK ZN
MID-1 AM	284	0.0	102	0.0	OFF	284	0	102	0.00	0	65.8	65.8	65.8	24.0	24.0
1-2 AM	183	0.0	55	0.0	OFF	183	0	55	0.00	0	66.1	66.1	66.1	24.4	24.4
2-3 AM	140	0.0	45	0.0	OFF	140	0	45	0.00	0	66.1	66.1	66.1	24.5	24.5
3-4 AM	102	0.0	42	0.0	OFF	102	0	42	0.00	0	66.2	66.2	66.2	24.5	24.5
4-5 AM	143	0.0	72	0.0	OFF	143	0	72	0.00	0	66.1	66.1	66.1	24.3	24.3
5-6 AM	280	0.0	127	0.0	OFF	280	0	127	0.00	0	65.9	65.9	65.9	23.8	23.8
6-7 AM	518	0.0	170	0.0	OFF	518	0	170	0.00	0	65.4	65.4	65.4	23.5	23.5
7-8 AM	945	0.0	252	0.0	OFF	945	0	252	0.00	0	64.6	64.6	64.6	22.9	22.9
8-9 AM	1420	0.0	323	0.0	1499	1420	0	323	1.02	4	63.7	41.3	33.0	22.4	22.4
9-10 AM	1843	0.0	403	0.0	1500	1843	0	403	6.24	169	63.0	15.6	30.8	21.7	22.0
10-11 AM	2000	0.0	451	0.0	1499	1656	343	794	18.69	479	62.7	8.3	30.8	21.4	20.4
11A-NOON	1859	0.0	442	0.0	1499	1455	405	846	19.12	489	62.9	8.3	30.8	21.4	20.0
NOON-1PM	1666	0.0	438	0.0	1500	1458	208	646	17.46	443	63.3	8.6	30.8	21.5	21.4
1-2 PM	1546	0.0	415	0.0	1500	1476	70	485	16.30	412	63.5	8.8	30.8	21.7	22.5
2-3 PM	1461	0.0	413	0.0	1499	1461	0	413	15.40	387	63.7	9.1	30.8	21.7	22.9
3-4 PM	1395	0.0	388	0.0	1499	1395	0	388	12.57	312	63.8	10.0	30.8	21.9	22.7
4-5 PM	1412	0.0	352	0.0	1500	1412	0	352	9.10	219	63.8	11.8	30.8	22.2	22.5
5-6 PM	1236	0.0	340	0.0	1499	1236	0	340	2.17	63	64.1	29.7	35.2	22.2	22.2
6-7 PM	1057	0.0	284	0.0	OFF	1057	0	284	0.00	0	64.4	64.4	64.4	22.7	22.7
7-8 PM	903	0.0	226	0.0	OFF	903	0	226	0.00	0	64.7	64.7	64.7	23.1	23.1
8-9 PM	830	0.0	191	0.0	OFF	830	0	191	0.00	0	64.8	64.8	64.8	23.3	23.3
9-10 PM	803	0.0	190	0.0	OFF	803	0	190	0.00	0	64.9	64.9	64.9	23.3	23.3
10-11 PM	740	0.0	181	0.0	OFF	740	0	181	0.00	0	65.0	65.0	65.0	23.5	23.5
11PM-MID	500	0.0	148	0.0	OFF	500	0	148	0.00	0	65.5	65.5	65.5	23.7	23.7

**"OFF" INDICATES NO ROAD WORK (ALL LANES OPEN TO TRAFFIC)**

*----- SITE BREAKDOWN DELAYS -----*	
BREAKDOWN DURATION (MINS)	0
RANGE OF QUEUE DELAY - MIN	0.0
(VEH-H) MAX	0.0
RANGE OF DIVN DELAY - MIN	0.0
(VEH-H) MAX	0.0
AV BREAKDOWNS PER DAY	0.00
AV QUEUE DELAY/DAY (VEH-H)	0.0
AV DIVN DELAY/DAY (VEH-H)	0.0
AV TOTAL DELAY/DAY (VEH-H)	0.0

*----- SITE ACCIDENT DELAYS -----*	
ACCIDENT DURATION (MINS)	0
RANGE OF QUEUE DELAY - MIN	0.0
(VEH-H) MAX	0.0
RANGE OF DIVN DELAY - MIN	0.0
(VEH-H) MAX	0.0
AV ACCIDENTS PER DAY	0.00
AV QUEUE DELAY/DAY (VEH-H)	0.0
AV DIVN DELAY/DAY (VEH-H)	0.0
AV TOTAL DELAY/DAY (VEH-H)	0.0

AVERAGE ACCIDENT NUMBERS (PIA/DAY)	
MAIN ROUTE WITHOUT WORKS	0.0074
MAIN ROUTE WITH WORKS	0.0061
DIVERSION	0.0524

PIA: Personal Injury Accidents

IMPACTS ON ROAD USERS	
ROAD USER COSTS PER DAY ( DOLLARS)	\$56,673
CONGESTED HOURS PER DAY*	5

\*Delays Exceeding 15 Minutes

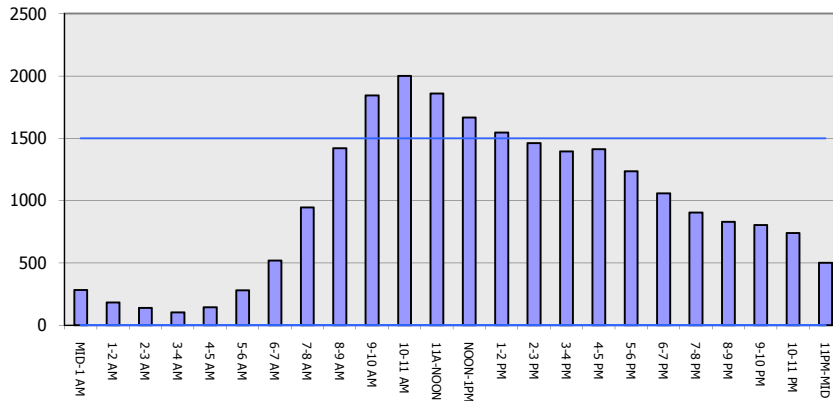
**STH 441: CTH 00 TO CTH CE (OUTAGAMIE COUNTY)**  
**OFF-PEAK DAY CLOSURE**  
**DIVERSION ROUTE: CTH CE - CTH N - CTH 00**

**AUGUST**  
 Analyzed for 2009  
 Construction Season

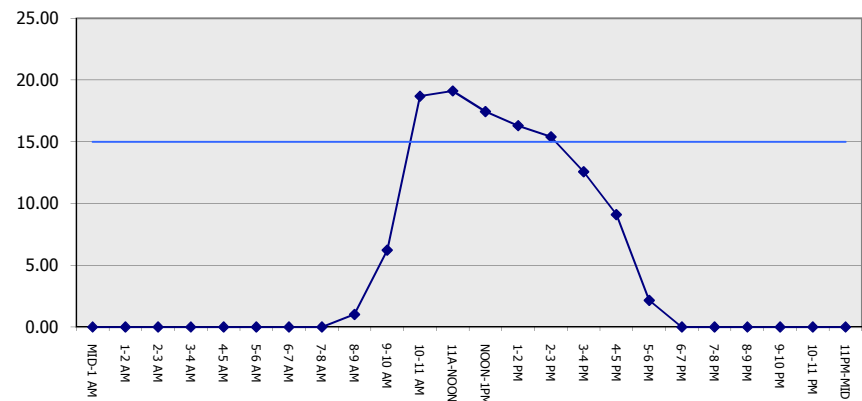
**GRAPHICAL REPRESENTATION OF TRAFFIC MODEL INPUT AND OUTPUT**

**SATURDAY SOUTHBOUND DIRECTION**

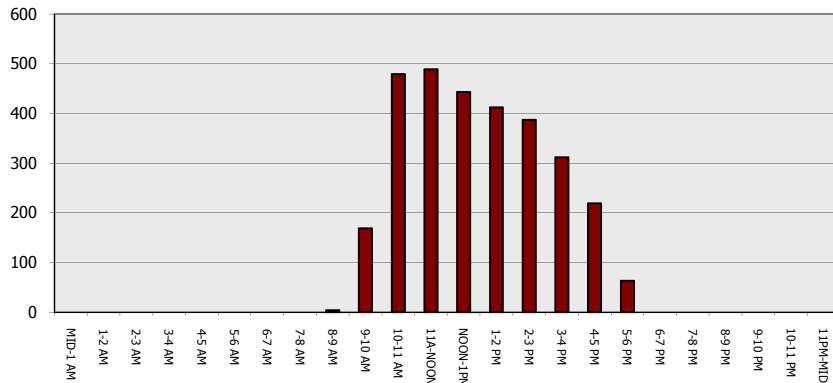
**Main Route - Traffic Demand (Vehicles Per Hour)**



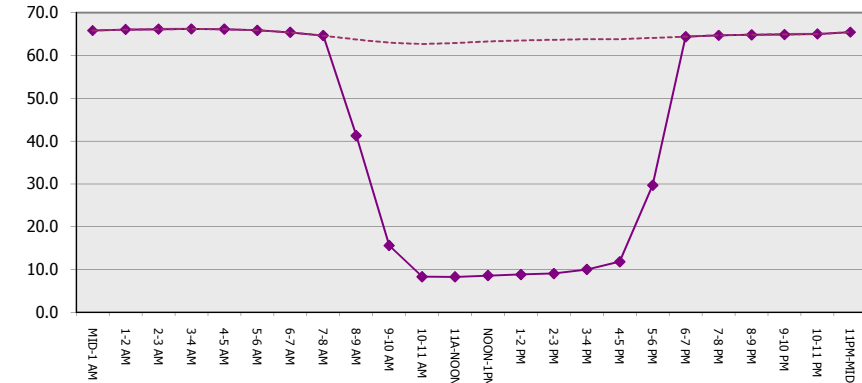
**Main Route Average Delay Per Vehicle (Minutes)**



**Main Route - Average Queue Length (Vehicles)**



**Main Route - Average Speed (MPH)**



<b>STH 441: CTH 00 TO CTH CE (OUTAGAMIE COUNTY)</b> <b>OFF-PEAK DAY CLOSURE</b> <b>DIVERSION ROUTE: CTH CE - CTH N - CTH 00</b>	<b>AUGUST</b>
	Analyzed for 2009 Construction Season

<b>SUMMARY OF TRAFFIC MODEL OUTPUT</b>	
SATURDAY	NORTHBOUND DIRECTION

TIME OF DAY	FLOWS AND CAPACITY IN VEH/HR								AVERAGE SPEEDS IN MPH						
	MAIN		DIVERSION		SITE CAPA CITY	FLOW MAIN ROUTE	FLOW DIVER -TING	TOTAL DIVN FLOW	AV.DEL PER VEH (MINS)	AVERAGE QUEUE (VEH)	MAIN ROUTE		SITE	ALTERNATE ROUTE	
	DEMAND FLOW	PCT HEAVY	NORMAL FLOW	PCT HEAVY							WITHOUT WORK ZN	WITH WORK ZN		WITHOUT WORK ZN	WITH WORK ZN
MID-1 AM	255	0.0	130	0.0	OFF	255	0	130	0.00	0	65.9	65.9	65.9	23.8	23.8
1-2 AM	130	0.0	79	0.0	OFF	130	0	79	0.00	0	66.1	66.1	66.1	24.2	24.2
2-3 AM	116	0.0	64	0.0	OFF	116	0	64	0.00	0	66.2	66.2	66.2	24.3	24.3
3-4 AM	111	0.0	47	0.0	OFF	111	0	47	0.00	0	66.2	66.2	66.2	24.5	24.5
4-5 AM	149	0.0	44	0.0	OFF	149	0	44	0.00	0	66.1	66.1	66.1	24.5	24.5
5-6 AM	212	0.0	95	0.0	OFF	212	0	95	0.00	0	66.0	66.0	66.0	24.1	24.1
6-7 AM	329	0.0	170	0.0	OFF	329	0	170	0.00	0	65.8	65.8	65.8	23.5	23.5
7-8 AM	524	0.0	191	0.0	OFF	524	0	191	0.00	0	65.4	65.4	65.4	23.3	23.3
8-9 AM	787	0.0	255	0.0	1500	787	0	255	0.50	0	64.9	51.1	42.4	22.9	22.9
9-10 AM	1069	0.0	347	0.0	1500	1069	0	347	0.53	0	64.4	50.2	41.4	22.2	22.2
10-11 AM	1354	0.0	435	0.0	1499	1354	0	435	0.83	0	63.8	44.2	34.2	21.5	21.5
11A-NOON	1549	0.0	493	0.0	1499	1549	0	493	1.46	13	63.5	35.8	30.8	21.1	21.1
NOON-1PM	1705	0.0	524	0.0	1500	1705	0	524	5.92	144	63.2	15.7	30.8	20.8	20.9
1-2 PM	1761	0.0	530	0.0	1500	1715	46	577	14.80	377	63.1	9.3	30.8	20.8	21.6
2-3 PM	1722	0.0	518	0.0	1499	1492	230	748	18.26	465	63.2	8.4	30.8	20.9	20.7
3-4 PM	1607	0.0	539	0.0	1499	1484	124	663	17.58	446	63.4	8.6	30.8	20.7	21.2
4-5 PM	1751	0.0	500	0.0	1500	1518	233	733	18.14	462	63.1	8.4	30.8	21.0	20.7
5-6 PM	1472	0.0	488	0.0	1499	1413	59	547	16.50	417	63.7	8.8	30.8	21.1	22.0
6-7 PM	1193	0.0	447	0.0	OFF	1193	0	447	0.40	25	64.1	53.0	53.0	21.4	21.4
7-8 PM	1056	0.0	349	0.0	OFF	1056	0	349	0.00	0	64.4	64.4	64.4	22.2	22.2
8-9 PM	987	0.0	372	0.0	OFF	987	0	372	0.00	0	64.5	64.5	64.5	22.0	22.0
9-10 PM	855	0.0	339	0.0	OFF	855	0	339	0.00	0	64.8	64.8	64.8	22.2	22.2
10-11 PM	664	0.0	284	0.0	OFF	664	0	284	0.00	0	65.1	65.1	65.1	22.7	22.7
11PM-MID	480	0.0	179	0.0	OFF	480	0	179	0.00	0	65.5	65.5	65.5	23.5	23.5

"OFF" INDICATES NO ROAD WORK (ALL LANES OPEN TO TRAFFIC)

*----- SITE BREAKDOWN DELAYS -----*	
BREAKDOWN DURATION (MINS)	0
RANGE OF QUEUE DELAY - MIN	0.0
(VEH-H) MAX	0.0
RANGE OF DIVN DELAY - MIN	0.0
(VEH-H) MAX	0.0
AV BREAKDOWNS PER DAY	0.00
AV QUEUE DELAY/DAY (VEH-H)	0.0
AV DIVN DELAY/DAY (VEH-H)	0.0
AV TOTAL DELAY/DAY (VEH-H)	0.0

*----- SITE ACCIDENT DELAYS -----*	
ACCIDENT DURATION (MINS)	0
RANGE OF QUEUE DELAY - MIN	0.0
(VEH-H) MAX	0.0
RANGE OF DIVN DELAY - MIN	0.0
(VEH-H) MAX	0.0
AV ACCIDENTS PER DAY	0.00
AV QUEUE DELAY/DAY (VEH-H)	0.0
AV DIVN DELAY/DAY (VEH-H)	0.0
AV TOTAL DELAY/DAY (VEH-H)	0.0

AVERAGE ACCIDENT NUMBERS (PIA/DAY)	
MAIN ROUTE WITHOUT WORKS	0.0070
MAIN ROUTE WITH WORKS	0.0058
DIVERSION	0.0600

PIA: Personal Injury Accidents

IMPACTS ON ROAD USERS	
ROAD USER COSTS PER DAY ( DOLLARS)	\$45,380
CONGESTED HOURS PER DAY*	4

\*Delays Exceeding 15 Minutes

**STH 441: CTH 00 TO CTH CE (OUTAGAMIE COUNTY)**  
**OFF-PEAK DAY CLOSURE**  
**DIVERSION ROUTE: CTH CE - CTH N - CTH 00**

**AUGUST**  
 Analyzed for 2009  
 Construction Season

**GRAPHICAL REPRESENTATION OF TRAFFIC MODEL INPUT AND OUTPUT**  
**SATURDAY NORTHBOUND DIRECTION**

