

STH 441: CTH 00 TO CTH CE (OUTAGAMIE COUNTY)
OFF-PEAK DAY CLOSURE
DIVERSION ROUTE: CTH CE - CTH N - CTH 00

AUGUST

Analyzed for 2009
 Construction Season

SUMMARY OF TRAFFIC MODEL OUTPUT

FRIDAY SOUTHBOUND DIRECTION

TIME OF DAY	FLOWS AND CAPACITY IN VEH/HR							AVERAGE SPEEDS IN MPH							
	MAIN ROUTE		ALTERNATE ROUTE		SITE CAPA CITY	FLOW MAIN ROUTE	FLOW DIVER -TING	TOTAL DIVN FLOW	AV.DEL PER VEH (MINS)	AVERAGE QUEUE (VEH)	MAIN ROUTE		ALTERNATE ROUTE		
	DEMAND FLOW	PCT HEAVY	NORMAL FLOW	PCT HEAVY							WITHOUT WORK ZN	WITH WORK ZN	SITE	WITHOUT WORK ZN	WITH WORK ZN
MID-1 AM	224	0.0	63	0.0	OFF	224	0	63	0.00	0	66.0	66.0	66.0	24.3	24.3
1-2 AM	148	0.0	45	0.0	OFF	148	0	45	0.00	0	66.1	66.1	66.1	24.5	24.5
2-3 AM	136	0.0	37	0.0	OFF	136	0	37	0.00	0	66.1	66.1	66.1	24.5	24.5
3-4 AM	113	0.0	46	0.0	OFF	113	0	46	0.00	0	66.2	66.2	66.2	24.5	24.5
4-5 AM	168	0.0	129	0.0	OFF	168	0	129	0.00	0	66.1	66.1	66.1	23.8	23.8
5-6 AM	373	0.0	317	0.0	OFF	373	0	317	0.00	0	65.7	65.7	65.7	22.4	22.4
6-7 AM	841	0.0	614	0.0	OFF	841	0	614	0.00	0	64.8	64.8	64.8	20.1	20.1
7-8 AM	1196	0.0	810	0.0	OFF	1196	0	810	0.00	0	64.1	64.1	64.1	18.6	18.6
8-9 AM	1347	0.0	544	0.0	OFF	1347	0	544	0.00	0	63.9	63.9	63.9	20.7	20.7
9-10 AM	1534	0.0	443	0.0	OFF	1534	0	443	0.00	0	63.5	63.5	63.5	21.4	21.4
10-11 AM	1621	0.0	485	0.0	1499	1621	0	485	2.89	57	63.3	25.1	30.8	21.1	21.1
11A-NOON	1633	0.0	528	0.0	1499	1633	0	528	7.64	182	63.3	13.0	30.8	20.8	20.9
NOON-1PM	1789	0.0	571	0.0	1500	1735	54	626	15.08	386	63.0	9.2	30.8	20.4	21.2
1-2 PM	1836	0.0	611	0.0	1499	1529	307	919	19.77	506	63.0	8.1	30.8	20.1	19.5
2-3 PM	1949	0.0	596	0.0	1500	1529	421	1017	20.74	533	62.8	8.0	30.8	20.2	18.8
3-4 PM	2069	0.0	623	0.0	OFF	2069	0	623	1.25	77	62.5	37.8	37.8	20.1	20.1
4-5 PM	2164	0.0	695	0.0	OFF	2164	0	695	0.00	0	62.3	62.3	62.3	19.5	19.5
5-6 PM	2235	0.0	658	0.0	OFF	2235	0	658	0.00	0	62.2	62.2	62.2	19.8	19.8
6-7 PM	2095	0.0	487	0.0	OFF	2095	0	487	0.00	0	62.5	62.5	62.5	21.1	21.1
7-8 PM	1448	0.0	305	0.0	OFF	1448	0	305	0.00	0	63.7	63.7	63.7	22.5	22.5
8-9 PM	967	0.0	265	0.0	OFF	967	0	265	0.00	0	64.6	64.6	64.6	22.8	22.8
9-10 PM	743	0.0	239	0.0	OFF	743	0	239	0.00	0	65.0	65.0	65.0	23.0	23.0
10-11 PM	647	0.0	182	0.0	OFF	647	0	182	0.00	0	65.2	65.2	65.2	23.4	23.4
11PM-MID	508	0.0	136	0.0	OFF	508	0	136	0.00	0	65.5	65.5	65.5	23.8	23.8

"OFF" INDICATES NO ROAD WORK (ALL LANES OPEN TO TRAFFIC)

----- SITE BREAKDOWN DELAYS -----	
BREAKDOWN DURATION (MINS)	0
RANGE OF QUEUE DELAY - MIN	0.0
(VEH-H) MAX	0.0
RANGE OF DIVN DELAY - MIN	0.0
(VEH-H) MAX	0.0
AV BREAKDOWNS PER DAY	0.00
AV QUEUE DELAY/DAY (VEH-H)	0.0
AV DIVN DELAY/DAY (VEH-H)	0.0
AV TOTAL DELAY/DAY (VEH-H)	0.0

----- SITE ACCIDENT DELAYS -----	
ACCIDENT DURATION (MINS)	0
RANGE OF QUEUE DELAY - MIN	0.0
(VEH-H) MAX	0.0
RANGE OF DIVN DELAY - MIN	0.0
(VEH-H) MAX	0.0
AV ACCIDENTS PER DAY	0.00
AV QUEUE DELAY/DAY (VEH-H)	0.0
AV DIVN DELAY/DAY (VEH-H)	0.0
AV TOTAL DELAY/DAY (VEH-H)	0.0

AVERAGE ACCIDENT NUMBERS (PIA/DAY)	
MAIN ROUTE WITHOUT WORKS	0.0088
MAIN ROUTE WITH WORKS	0.0081
DIVERSION	0.0756

PIA: Personal Injury Accidents

IMPACTS ON ROAD USERS	
ROAD USER COSTS PER DAY (DOLLARS)	\$27,529
CONGESTED HOURS PER DAY*	3

*Delays Exceeding 15 Minutes

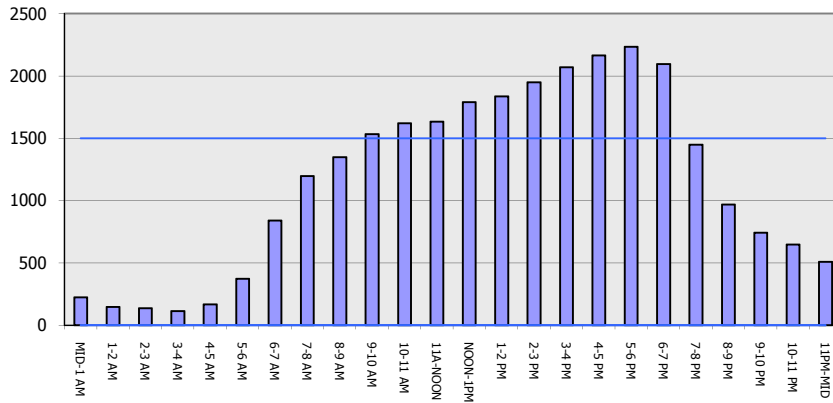
STH 441: CTH 00 TO CTH CE (OUTAGAMIE COUNTY)
OFF-PEAK DAY CLOSURE
DIVERSION ROUTE: CTH CE - CTH N - CTH 00

AUGUST
 Analyzed for 2009
 Construction Season

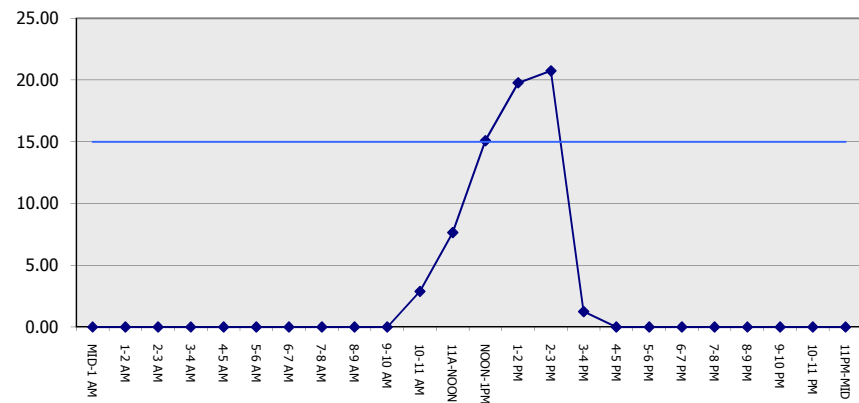
GRAPHICAL REPRESENTATION OF TRAFFIC MODEL INPUT AND OUTPUT

FRIDAY SOUTHBOUND DIRECTION

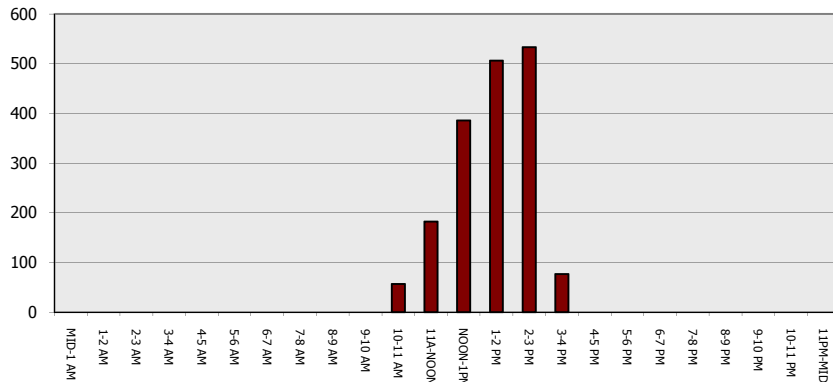
Main Route - Traffic Demand (Vehicles Per Hour)



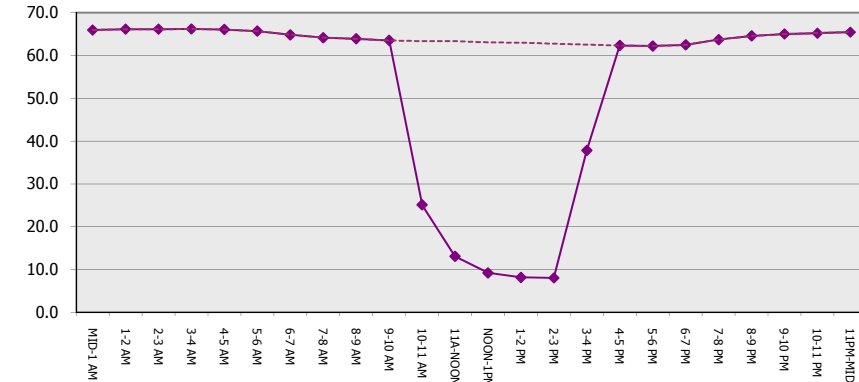
Main Route Average Delay Per Vehicle (Minutes)



Main Route - Average Queue Length (Vehicles)



Main Route - Average Speed (MPH)



**STH 441: CTH 00 TO CTH CE (OUTAGAMIE COUNTY)
OFF-PEAK DAY CLOSURE
DIVERSION ROUTE: CTH CE - CTH N - CTH 00**

AUGUST

Analyzed for 2009
Construction Season

SUMMARY OF TRAFFIC MODEL OUTPUT

FRIDAY NORTHBOUND DIRECTION

TIME OF DAY	FLOWS AND CAPACITY IN VEH/HR							AVERAGE SPEEDS IN MPH			AVERAGE SPEEDS IN MPH				
	MAIN		DIVERSION		SITE CAPA CITY	FLOW MAIN ROUTE	FLOW DIVER -TING	TOTAL DIVN FLOW	AV.DEL PER VEH (MINS)	AVERAGE QUEUE (VEH)	MAIN ROUTE		ALTERNATE ROUTE		
	DEMAND FLOW	PCT HEAVY	NORMAL FLOW	PCT HEAVY							WITHOUT WORK ZN	WITH WORK ZN	SITE	WITHOUT WORK ZN	WITH WORK ZN
MID-1 AM	225	0.0	105	0.0	OFF	225	0	105	0.00	0	66.0	66.0	66.0	24.0	24.0
1-2 AM	126	0.0	88	0.0	OFF	126	0	88	0.00	0	66.1	66.1	66.1	24.2	24.2
2-3 AM	107	0.0	59	0.0	OFF	107	0	59	0.00	0	66.2	66.2	66.2	24.4	24.4
3-4 AM	140	0.0	43	0.0	OFF	140	0	43	0.00	0	66.1	66.1	66.1	24.5	24.5
4-5 AM	229	0.0	59	0.0	OFF	229	0	59	0.00	0	66.0	66.0	66.0	24.4	24.4
5-6 AM	453	0.0	198	0.0	OFF	453	0	198	0.00	0	65.5	65.5	65.5	23.3	23.3
6-7 AM	791	0.0	481	0.0	OFF	791	0	481	0.00	0	64.9	64.9	64.9	21.2	21.2
7-8 AM	1042	0.0	690	0.0	OFF	1042	0	690	0.00	0	64.5	64.5	64.5	19.6	19.6
8-9 AM	954	0.0	501	0.0	OFF	954	0	501	0.00	0	64.6	64.6	64.6	21.0	21.0
9-10 AM	1002	0.0	466	0.0	OFF	1002	0	466	0.00	0	64.5	64.5	64.5	21.2	21.2
10-11 AM	1113	0.0	513	0.0	1500	1113	0	513	0.53	0	64.3	50.1	41.3	20.9	20.9
11A-NOON	1188	0.0	588	0.0	1500	1188	0	588	0.62	0	64.1	48.2	38.9	20.3	20.3
NOON-1PM	1315	0.0	632	0.0	1499	1315	0	632	0.78	0	64.0	45.1	35.1	20.0	20.0
1-2 PM	1513	0.0	678	0.0	1499	1513	0	678	1.24	7	63.6	38.4	31.1	19.6	19.6
2-3 PM	1664	0.0	872	0.0	1500	1664	0	872	4.38	100	63.3	19.1	30.8	18.1	18.1
3-4 PM	1813	0.0	903	0.0	OFF	1813	0	903	0.14	8	63.0	58.7	58.7	17.9	17.9
4-5 PM	1896	0.0	1038	0.0	OFF	1896	0	1038	0.00	0	62.8	62.8	62.8	16.9	16.9
5-6 PM	1810	0.0	869	0.0	OFF	1810	0	869	0.00	0	63.0	63.0	63.0	18.2	18.2
6-7 PM	1407	0.0	632	0.0	OFF	1407	0	632	0.00	0	63.8	63.8	63.8	20.0	20.0
7-8 PM	1087	0.0	467	0.0	OFF	1087	0	467	0.00	0	64.3	64.3	64.3	21.2	21.2
8-9 PM	898	0.0	417	0.0	OFF	898	0	417	0.00	0	64.7	64.7	64.7	21.6	21.6
9-10 PM	771	0.0	401	0.0	OFF	771	0	401	0.00	0	65.0	65.0	65.0	21.7	21.7
10-11 PM	560	0.0	333	0.0	OFF	560	0	333	0.00	0	65.3	65.3	65.3	22.3	22.3
11PM-MID	410	0.0	255	0.0	OFF	410	0	255	0.00	0	65.6	65.6	65.6	22.9	22.9

"OFF" INDICATES NO ROAD WORK (ALL LANES OPEN TO TRAFFIC)

----- SITE BREAKDOWN DELAYS -----	
BREAKDOWN DURATION (MINS)	0
RANGE OF QUEUE DELAY - MIN	0.0
(VEH-H) MAX	0.0
RANGE OF DIVN DELAY - MIN	0.0
(VEH-H) MAX	0.0
AV BREAKDOWNS PER DAY	0.00
AV QUEUE DELAY/DAY (VEH-H)	0.0
AV DIVN DELAY/DAY (VEH-H)	0.0
AV TOTAL DELAY/DAY (VEH-H)	0.0

----- SITE ACCIDENT DELAYS -----	
ACCIDENT DURATION (MINS)	0
RANGE OF QUEUE DELAY - MIN	0.0
(VEH-H) MAX	0.0
RANGE OF DIVN DELAY - MIN	0.0
(VEH-H) MAX	0.0
AV ACCIDENTS PER DAY	0.00
AV QUEUE DELAY/DAY (VEH-H)	0.0
AV DIVN DELAY/DAY (VEH-H)	0.0
AV TOTAL DELAY/DAY (VEH-H)	0.0

AVERAGE ACCIDENT NUMBERS (PIA/DAY)	
MAIN ROUTE WITHOUT WORKS	0.0072
MAIN ROUTE WITH WORKS	0.0067
DIVERSION	0.0835

PIA: Personal Injury Accidents

IMPACTS ON ROAD USERS	
ROAD USER COSTS PER DAY (DOLLARS)	\$2,625
CONGESTED HOURS PER DAY*	0

*Delays Exceeding 15 Minutes

STH 441: CTH 00 TO CTH CE (OUTAGAMIE COUNTY)
OFF-PEAK DAY CLOSURE
DIVERSION ROUTE: CTH CE - CTH N - CTH 00

AUGUST
 Analyzed for 2009
 Construction Season

GRAPHICAL REPRESENTATION OF TRAFFIC MODEL INPUT AND OUTPUT
FRIDAY NORTHBOUND DIRECTION

