

| | |
|---|--|
| STH 441: CTH 00 TO CTH CE (OUTAGAMIE COUNTY) OFF-PEAK DAY CLOSURE DIVERSION ROUTE: CTH CE - CTH N - CTH 00 | MAY |
| | Analyzed for 2009 Construction Season |

SUMMARY OF TRAFFIC MODEL OUTPUT

SUNDAY SOUTHBOUND DIRECTION

| TIME OF DAY | FLOWS AND CAPACITY IN VEH/HR | | | | | | | AVERAGE SPEEDS IN MPH | | | | | | | |
|-------------|------------------------------|-----------|-----------------|-----------|----------------|-----------------|------------------|-----------------------|-----------------------|---------------------|-----------------|--------------|-----------------|-----------------|--------------|
| | MAIN ROUTE | | ALTERNATE ROUTE | | SITE CAPA CITY | FLOW MAIN ROUTE | FLOW DIVER -TING | TOTAL DIVN FLOW | AV.DEL PER VEH (MINS) | AVERAGE QUEUE (VEH) | MAIN ROUTE | | ALTERNATE ROUTE | | |
| | DEMAND FLOW | PCT HEAVY | NORMAL FLOW | PCT HEAVY | | | | | | | WITHOUT WORK ZN | WITH WORK ZN | SITE | WITHOUT WORK ZN | WITH WORK ZN |
| MID-1 AM | 176 | 0.0 | 101 | 0.0 | OFF | 176 | 0 | 101 | 0.00 | 0 | 66.1 | 66.1 | 66.1 | 24.1 | 24.1 |
| 1-2 AM | 95 | 0.0 | 59 | 0.0 | OFF | 95 | 0 | 59 | 0.00 | 0 | 66.2 | 66.2 | 66.2 | 24.4 | 24.4 |
| 2-3 AM | 83 | 0.0 | 44 | 0.0 | OFF | 83 | 0 | 44 | 0.00 | 0 | 66.3 | 66.3 | 66.3 | 24.5 | 24.5 |
| 3-4 AM | 55 | 0.0 | 41 | 0.0 | OFF | 55 | 0 | 41 | 0.00 | 0 | 66.3 | 66.3 | 66.3 | 24.5 | 24.5 |
| 4-5 AM | 83 | 0.0 | 34 | 0.0 | OFF | 83 | 0 | 34 | 0.00 | 0 | 66.3 | 66.3 | 66.3 | 24.6 | 24.6 |
| 5-6 AM | 171 | 0.0 | 77 | 0.0 | OFF | 171 | 0 | 77 | 0.00 | 0 | 66.1 | 66.1 | 66.1 | 24.2 | 24.2 |
| 6-7 AM | 287 | 0.0 | 110 | 0.0 | OFF | 287 | 0 | 110 | 0.00 | 0 | 65.8 | 65.8 | 65.8 | 24.0 | 24.0 |
| 7-8 AM | 519 | 0.0 | 130 | 0.0 | OFF | 519 | 0 | 130 | 0.00 | 0 | 65.4 | 65.4 | 65.4 | 23.8 | 23.8 |
| 8-9 AM | 822 | 0.0 | 208 | 0.0 | OFF | 822 | 0 | 208 | 0.00 | 0 | 64.8 | 64.8 | 64.8 | 23.2 | 23.2 |
| 9-10 AM | 1214 | 0.0 | 290 | 0.0 | 1499 | 1214 | 0 | 290 | 0.65 | 0 | 64.1 | 47.6 | 38.2 | 22.6 | 22.6 |
| 10-11 AM | 1462 | 0.0 | 394 | 0.0 | 1499 | 1462 | 0 | 394 | 1.01 | 1 | 63.7 | 41.5 | 31.7 | 21.8 | 21.8 |
| 11A-NOON | 1587 | 0.0 | 425 | 0.0 | 1500 | 1587 | 0 | 425 | 2.50 | 43 | 63.4 | 27.3 | 30.8 | 21.5 | 21.5 |
| NOON-1PM | 1587 | 0.0 | 483 | 0.0 | 1499 | 1587 | 0 | 483 | 6.05 | 138 | 63.4 | 15.2 | 30.8 | 21.1 | 21.2 |
| 1-2 PM | 1493 | 0.0 | 444 | 0.0 | 1499 | 1493 | 0 | 444 | 7.78 | 182 | 63.6 | 12.8 | 30.8 | 21.4 | 21.5 |
| 2-3 PM | 1380 | 0.0 | 416 | 0.0 | 1499 | 1380 | 0 | 416 | 5.06 | 114 | 63.8 | 17.3 | 31.0 | 21.7 | 21.7 |
| 3-4 PM | 1424 | 0.0 | 433 | 0.0 | 1500 | 1424 | 0 | 433 | 1.34 | 12 | 63.7 | 37.2 | 31.9 | 21.5 | 21.5 |
| 4-5 PM | 1673 | 0.0 | 401 | 0.0 | 1499 | 1673 | 0 | 401 | 3.58 | 81 | 63.3 | 21.9 | 30.8 | 21.7 | 21.7 |
| 5-6 PM | 1599 | 0.0 | 384 | 0.0 | 1499 | 1599 | 0 | 384 | 9.70 | 235 | 63.4 | 11.4 | 30.8 | 21.9 | 22.4 |
| 6-7 PM | 1253 | 0.0 | 297 | 0.0 | 1499 | 1253 | 0 | 297 | 6.45 | 169 | 64.0 | 15.1 | 32.8 | 22.5 | 22.8 |
| 7-8 PM | 937 | 0.0 | 242 | 0.0 | OFF | 937 | 0 | 242 | 0.00 | 0 | 64.6 | 64.5 | 64.5 | 23.0 | 23.0 |
| 8-9 PM | 708 | 0.0 | 210 | 0.0 | OFF | 708 | 0 | 210 | 0.00 | 0 | 65.1 | 65.1 | 65.1 | 23.2 | 23.2 |
| 9-10 PM | 489 | 0.0 | 165 | 0.0 | OFF | 489 | 0 | 165 | 0.00 | 0 | 65.5 | 65.5 | 65.5 | 23.6 | 23.6 |
| 10-11 PM | 303 | 0.0 | 107 | 0.0 | OFF | 303 | 0 | 107 | 0.00 | 0 | 65.8 | 65.8 | 65.8 | 24.0 | 24.0 |
| 11PM-MID | 182 | 0.0 | 52 | 0.0 | OFF | 182 | 0 | 52 | 0.00 | 0 | 66.1 | 66.1 | 66.1 | 24.5 | 24.5 |

"OFF" INDICATES NO ROAD WORK (ALL LANES OPEN TO TRAFFIC)

| *----- SITE BREAKDOWN DELAYS -----* | |
|-------------------------------------|------|
| BREAKDOWN DURATION (MINS) | 0 |
| RANGE OF QUEUE DELAY - MIN | 0.0 |
| (VEH-H) MAX | 0.0 |
| RANGE OF DIVN DELAY - MIN | 0.0 |
| (VEH-H) MAX | 0.0 |
| AV BREAKDOWNS PER DAY | 0.00 |
| AV QUEUE DELAY/DAY (VEH-H) | 0.0 |
| AV DIVN DELAY/DAY (VEH-H) | 0.0 |
| AV TOTAL DELAY/DAY (VEH-H) | 0.0 |

| *----- SITE ACCIDENT DELAYS -----* | |
|------------------------------------|------|
| ACCIDENT DURATION (MINS) | 0 |
| RANGE OF QUEUE DELAY - MIN | 0.0 |
| (VEH-H) MAX | 0.0 |
| RANGE OF DIVN DELAY - MIN | 0.0 |
| (VEH-H) MAX | 0.0 |
| AV ACCIDENTS PER DAY | 0.00 |
| AV QUEUE DELAY/DAY (VEH-H) | 0.0 |
| AV DIVN DELAY/DAY (VEH-H) | 0.0 |
| AV TOTAL DELAY/DAY (VEH-H) | 0.0 |

| AVERAGE ACCIDENT NUMBERS (PIA/DAY) | |
|------------------------------------|--------|
| MAIN ROUTE WITHOUT WORKS | 0.0062 |
| MAIN ROUTE WITH WORKS | 0.0053 |
| DIVERSION | 0.0411 |

PIA: Personal Injury Accidents

| IMPACTS ON ROAD USERS | |
|------------------------------------|----------|
| ROAD USER COSTS PER DAY (DOLLARS) | \$19,777 |
| CONGESTED HOURS PER DAY* | 0 |

*Delays Exceeding 15 Minutes

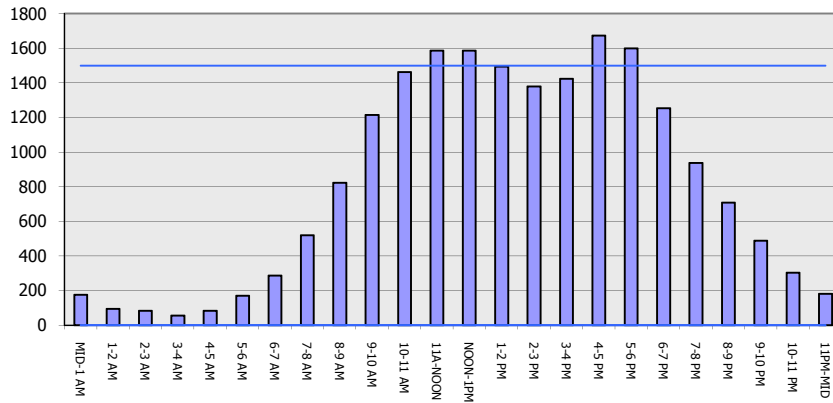
STH 441: CTH 00 TO CTH CE (OUTAGAMIE COUNTY)
OFF-PEAK DAY CLOSURE
DIVERSION ROUTE: CTH CE - CTH N - CTH 00

MAY
 Analyzed for 2009
 Construction Season

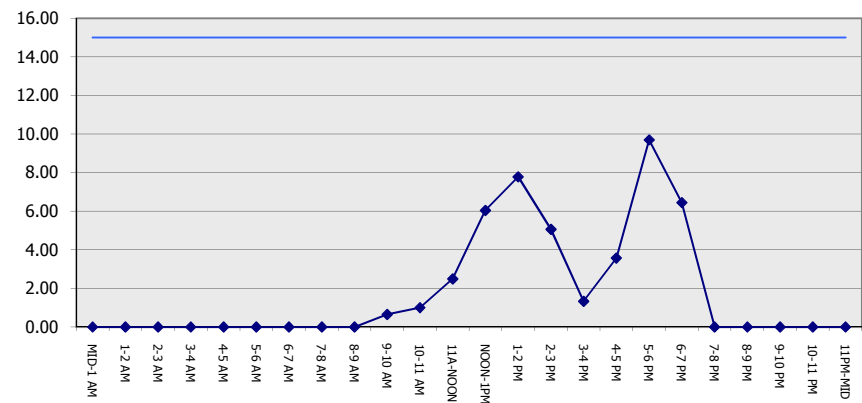
GRAPHICAL REPRESENTATION OF TRAFFIC MODEL INPUT AND OUTPUT

SUNDAY SOUTHBOUND DIRECTION

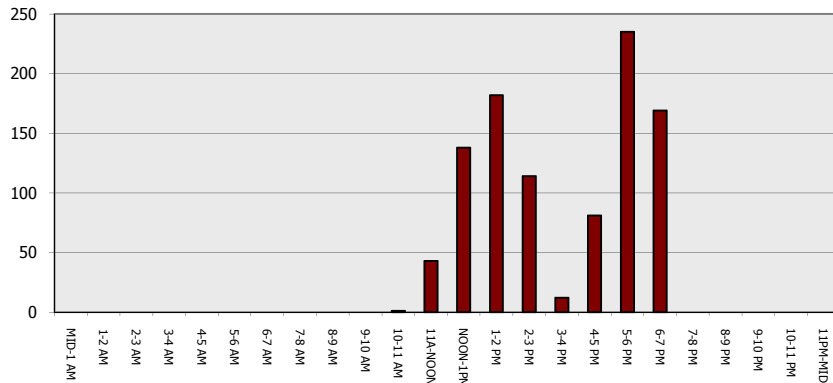
Main Route - Traffic Demand (Vehicles Per Hour)



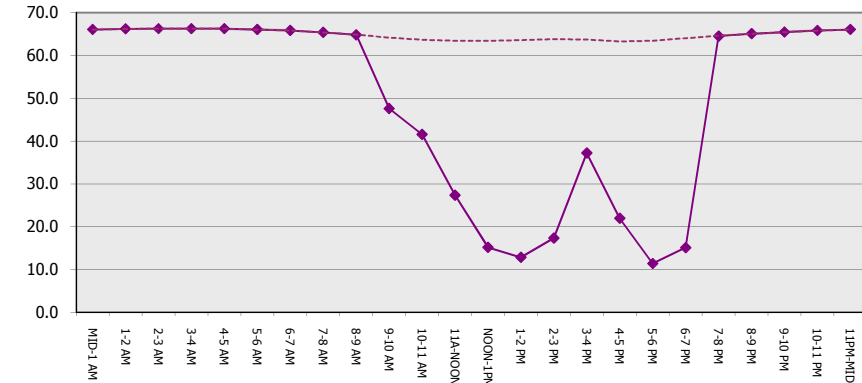
Main Route Average Delay Per Vehicle (Minutes)



Main Route - Average Queue Length (Vehicles)



Main Route - Average Speed (MPH)



**STH 441: CTH 00 TO CTH CE (OUTAGAMIE COUNTY)
OFF-PEAK DAY CLOSURE
DIVERSION ROUTE: CTH CE - CTH N - CTH 00**

MAY
Analyzed for 2009
Construction Season

SUMMARY OF TRAFFIC MODEL OUTPUT

SUNDAY NORTHBOUND DIRECTION

| TIME OF DAY | FLOWS AND CAPACITY IN VEH/HR | | | | | | | TOTAL DIVN FLOW | AV.DEL PER VEH (MINS) | AVERAGE QUEUE (VEH) | AVERAGE SPEEDS IN MPH | | | | |
|-------------|------------------------------|-----------|-------------|-----------|----------------|-----------------|------------------|-----------------|-----------------------|---------------------|-----------------------|--------------|------|-----------------|--------------|
| | MAIN | | DIVERSION | | SITE CAPA CITY | FLOW MAIN ROUTE | FLOW DIVER -TING | | | | MAIN ROUTE | | SITE | ALTERNATE ROUTE | |
| | DEMAND FLOW | PCT HEAVY | NORMAL FLOW | PCT HEAVY | | | | | | | WITHOUT WORK ZN | WITH WORK ZN | | WITHOUT WORK ZN | WITH WORK ZN |
| MID-1 AM | 202 | 0.0 | 108 | 0.0 | OFF | 202 | 0 | 108 | 0.00 | 0 | 66.0 | 66.0 | 66.0 | 24.0 | 24.0 |
| 1-2 AM | 97 | 0.0 | 68 | 0.0 | OFF | 97 | 0 | 68 | 0.00 | 0 | 66.2 | 66.2 | 66.2 | 24.3 | 24.3 |
| 2-3 AM | 89 | 0.0 | 60 | 0.0 | OFF | 89 | 0 | 60 | 0.00 | 0 | 66.2 | 66.2 | 66.2 | 24.4 | 24.4 |
| 3-4 AM | 74 | 0.0 | 39 | 0.0 | OFF | 74 | 0 | 39 | 0.00 | 0 | 66.3 | 66.3 | 66.3 | 24.5 | 24.5 |
| 4-5 AM | 90 | 0.0 | 30 | 0.0 | OFF | 90 | 0 | 30 | 0.00 | 0 | 66.2 | 66.2 | 66.2 | 24.6 | 24.6 |
| 5-6 AM | 131 | 0.0 | 69 | 0.0 | OFF | 131 | 0 | 69 | 0.00 | 0 | 66.1 | 66.1 | 66.1 | 24.3 | 24.3 |
| 6-7 AM | 191 | 0.0 | 134 | 0.0 | OFF | 191 | 0 | 134 | 0.00 | 0 | 66.0 | 66.0 | 66.0 | 23.8 | 23.8 |
| 7-8 AM | 341 | 0.0 | 128 | 0.0 | OFF | 341 | 0 | 128 | 0.00 | 0 | 65.8 | 65.8 | 65.8 | 23.8 | 23.8 |
| 8-9 AM | 626 | 0.0 | 218 | 0.0 | OFF | 626 | 0 | 218 | 0.00 | 0 | 65.2 | 65.2 | 65.2 | 23.2 | 23.2 |
| 9-10 AM | 1129 | 0.0 | 302 | 0.0 | 1499 | 1129 | 0 | 302 | 0.61 | 0 | 64.3 | 48.4 | 39.1 | 22.5 | 22.5 |
| 10-11 AM | 1676 | 0.0 | 414 | 0.0 | 1499 | 1676 | 0 | 414 | 2.84 | 63 | 63.3 | 25.3 | 30.8 | 21.7 | 21.7 |
| 11A-NOON | 1925 | 0.0 | 420 | 0.0 | 1500 | 1812 | 113 | 533 | 13.92 | 361 | 62.8 | 9.6 | 30.8 | 21.6 | 21.9 |
| NOON-1PM | 1933 | 0.0 | 526 | 0.0 | 1499 | 1530 | 403 | 929 | 19.87 | 509 | 62.8 | 8.1 | 30.8 | 20.8 | 19.4 |
| 1-2 PM | 1898 | 0.0 | 528 | 0.0 | 1499 | 1490 | 408 | 936 | 19.94 | 511 | 62.8 | 8.1 | 30.8 | 20.8 | 19.4 |
| 2-3 PM | 1922 | 0.0 | 536 | 0.0 | 1500 | 1513 | 409 | 945 | 20.03 | 513 | 62.8 | 8.1 | 30.8 | 20.7 | 19.3 |
| 3-4 PM | 2059 | 0.0 | 562 | 0.0 | 1500 | 1547 | 513 | 1075 | 21.37 | 550 | 62.5 | 7.9 | 30.8 | 20.6 | 18.4 |
| 4-5 PM | 2090 | 0.0 | 574 | 0.0 | 1499 | 1506 | 584 | 1158 | 22.32 | 576 | 62.5 | 7.8 | 30.8 | 20.4 | 17.9 |
| 5-6 PM | 1923 | 0.0 | 581 | 0.0 | 1499 | 1442 | 481 | 1062 | 21.24 | 546 | 62.8 | 7.9 | 30.8 | 20.4 | 18.6 |
| 6-7 PM | 1628 | 0.0 | 508 | 0.0 | 1499 | 1409 | 220 | 728 | 18.13 | 462 | 63.3 | 8.4 | 30.8 | 20.9 | 20.8 |
| 7-8 PM | 1367 | 0.0 | 394 | 0.0 | OFF | 1367 | 0 | 394 | 0.54 | 34 | 63.8 | 49.6 | 49.6 | 21.8 | 21.8 |
| 8-9 PM | 1111 | 0.0 | 339 | 0.0 | OFF | 1111 | 0 | 339 | 0.00 | 0 | 64.3 | 64.3 | 64.3 | 22.2 | 22.2 |
| 9-10 PM | 756 | 0.0 | 222 | 0.0 | OFF | 756 | 0 | 222 | 0.00 | 0 | 65.0 | 65.0 | 65.0 | 23.2 | 23.2 |
| 10-11 PM | 474 | 0.0 | 168 | 0.0 | OFF | 474 | 0 | 168 | 0.00 | 0 | 65.5 | 65.5 | 65.5 | 23.5 | 23.5 |
| 11PM-MID | 272 | 0.0 | 78 | 0.0 | OFF | 272 | 0 | 78 | 0.00 | 0 | 65.9 | 65.9 | 65.9 | 24.2 | 24.2 |

"OFF" INDICATES NO ROAD WORK (ALL LANES OPEN TO TRAFFIC)

| *----- SITE BREAKDOWN DELAYS -----* | |
|-------------------------------------|------|
| BREAKDOWN DURATION (MINS) | 0 |
| RANGE OF QUEUE DELAY - MIN | 0.0 |
| (VEH-H) MAX | 0.0 |
| RANGE OF DIVN DELAY - MIN | 0.0 |
| (VEH-H) MAX | 0.0 |
| AV BREAKDOWNS PER DAY | 0.00 |
| AV QUEUE DELAY/DAY (VEH-H) | 0.0 |
| AV DIVN DELAY/DAY (VEH-H) | 0.0 |
| AV TOTAL DELAY/DAY (VEH-H) | 0.0 |

| *----- SITE ACCIDENT DELAYS -----* | |
|------------------------------------|------|
| ACCIDENT DURATION (MINS) | 0 |
| RANGE OF QUEUE DELAY - MIN | 0.0 |
| (VEH-H) MAX | 0.0 |
| RANGE OF DIVN DELAY - MIN | 0.0 |
| (VEH-H) MAX | 0.0 |
| AV ACCIDENTS PER DAY | 0.00 |
| AV QUEUE DELAY/DAY (VEH-H) | 0.0 |
| AV DIVN DELAY/DAY (VEH-H) | 0.0 |
| AV TOTAL DELAY/DAY (VEH-H) | 0.0 |

| AVERAGE ACCIDENT NUMBERS (PIA/DAY) | |
|------------------------------------|--------|
| MAIN ROUTE WITHOUT WORKS | 0.0076 |
| MAIN ROUTE WITH WORKS | 0.0057 |
| DIVERSION | 0.0750 |

PIA: Personal Injury Accidents

| IMPACTS ON ROAD USERS | |
|------------------------------------|----------|
| ROAD USER COSTS PER DAY (DOLLARS) | \$92,626 |
| CONGESTED HOURS PER DAY* | 7 |

*Delays Exceeding 15 Minutes

STH 441: CTH 00 TO CTH CE (OUTAGAMIE COUNTY)
OFF-PEAK DAY CLOSURE
DIVERSION ROUTE: CTH CE - CTH N - CTH OO

MAY
 Analyzed for 2009
 Construction Season

GRAPHICAL REPRESENTATION OF TRAFFIC MODEL INPUT AND OUTPUT
SUNDAY NORTHBOUND DIRECTION

