

**STH 441: CTH 00 TO CTH CE (OUTAGAMIE COUNTY)**  
**OFF-PEAK DAY CLOSURE**  
**DIVERSION ROUTE: CTH CE - CTH N - CTH 00**

**MAY**  
 Analyzed for 2009  
 Construction Season

**SUMMARY OF TRAFFIC MODEL OUTPUT**

SATURDAY SOUTHBOUND DIRECTION

TIME OF DAY	FLOWS AND CAPACITY IN VEH/HR										AVERAGE SPEEDS IN MPH				
	MAIN ROUTE		ALTERNATE ROUTE		SITE CAPA CITY	FLOW MAIN ROUTE	FLOW DIVER -TING	TOTAL DIVN FLOW	AV.DEL PER VEH (MINS)	AVERAGE QUEUE (VEH)	MAIN ROUTE		ALTERNATE ROUTE		
	DEMAND FLOW	PCT HEAVY	NORMAL FLOW	PCT HEAVY							WITHOUT WORK ZN	WITH WORK ZN	SITE	WITHOUT WORK ZN	WITH WORK ZN
MID-1 AM	250	0.0	86	0.0	OFF	250	0	86	0.00	0	65.9	65.9	65.9	24.2	24.2
1-2 AM	153	0.0	50	0.0	OFF	153	0	50	0.00	0	66.1	66.1	66.1	24.5	24.5
2-3 AM	136	0.0	55	0.0	OFF	136	0	55	0.00	0	66.1	66.1	66.1	24.4	24.4
3-4 AM	111	0.0	43	0.0	OFF	111	0	43	0.00	0	66.2	66.2	66.2	24.5	24.5
4-5 AM	165	0.0	74	0.0	OFF	165	0	74	0.00	0	66.1	66.1	66.1	24.3	24.3
5-6 AM	332	0.0	127	0.0	OFF	332	0	127	0.00	0	65.8	65.8	65.8	23.8	23.8
6-7 AM	628	0.0	191	0.0	OFF	628	0	191	0.00	0	65.2	65.2	65.2	23.3	23.3
7-8 AM	1054	0.0	266	0.0	OFF	1054	0	266	0.00	0	64.4	64.4	64.4	22.8	22.8
8-9 AM	1393	0.0	379	0.0	1499	1393	0	379	0.88	0	63.8	43.4	33.2	21.9	21.9
9-10 AM	1688	0.0	424	0.0	1499	1688	0	424	3.58	83	63.2	21.9	30.8	21.6	21.6
10-11 AM	1732	0.0	448	0.0	1500	1732	0	448	12.03	304	63.2	10.2	30.8	21.4	22.2
11A-NOON	1680	0.0	446	0.0	1499	1517	162	608	17.17	435	63.3	8.6	30.8	21.4	21.6
NOON-1PM	1603	0.0	469	0.0	1500	1487	116	585	17.00	431	63.4	8.7	30.8	21.2	21.8
1-2 PM	1466	0.0	438	0.0	1499	1449	18	456	15.85	400	63.7	8.9	30.8	21.5	22.6
2-3 PM	1346	0.0	411	0.0	1499	1346	0	411	12.05	300	63.9	10.2	30.8	21.7	22.5
3-4 PM	1306	0.0	415	0.0	1499	1306	0	415	5.02	123	64.0	17.6	31.8	21.7	21.7
4-5 PM	1269	0.0	377	0.0	1500	1269	0	377	0.77	1	64.0	45.3	36.3	21.9	21.9
5-6 PM	1066	0.0	375	0.0	1500	1066	0	375	0.53	0	64.4	50.2	41.4	22.0	22.0
6-7 PM	843	0.0	323	0.0	OFF	843	0	323	0.00	0	64.8	64.8	64.8	22.4	22.4
7-8 PM	708	0.0	260	0.0	OFF	708	0	260	0.00	0	65.1	65.1	65.1	22.9	22.9
8-9 PM	646	0.0	238	0.0	OFF	646	0	238	0.00	0	65.2	65.2	65.2	23.0	23.0
9-10 PM	796	0.0	206	0.0	OFF	796	0	206	0.00	0	64.9	64.9	64.9	23.3	23.3
10-11 PM	545	0.0	160	0.0	OFF	545	0	160	0.00	0	65.4	65.4	65.4	23.6	23.6
11PM-MID	287	0.0	122	0.0	OFF	287	0	122	0.00	0	65.8	65.8	65.8	23.9	23.9

"OFF" INDICATES NO ROAD WORK (ALL LANES OPEN TO TRAFFIC)

*----- SITE BREAKDOWN DELAYS -----*	
BREAKDOWN DURATION (MINS)	0
RANGE OF QUEUE DELAY - MIN	0.0
(VEH-H) MAX	0.0
RANGE OF DIVN DELAY - MIN	0.0
(VEH-H) MAX	0.0
AV BREAKDOWNS PER DAY	0.00
AV QUEUE DELAY/DAY (VEH-H)	0.0
AV DIVN DELAY/DAY (VEH-H)	0.0
AV TOTAL DELAY/DAY (VEH-H)	0.0

*----- SITE ACCIDENT DELAYS -----*	
ACCIDENT DURATION (MINS)	0
RANGE OF QUEUE DELAY - MIN	0.0
(VEH-H) MAX	0.0
RANGE OF DIVN DELAY - MIN	0.0
(VEH-H) MAX	0.0
AV ACCIDENTS PER DAY	0.00
AV QUEUE DELAY/DAY (VEH-H)	0.0
AV DIVN DELAY/DAY (VEH-H)	0.0
AV TOTAL DELAY/DAY (VEH-H)	0.0

AVERAGE ACCIDENT NUMBERS (PIA/DAY)	
MAIN ROUTE WITHOUT WORKS	0.0068
MAIN ROUTE WITH WORKS	0.0057
DIVERSION	0.0494

PIA: Personal Injury Accidents

IMPACTS ON ROAD USERS	
ROAD USER COSTS PER DAY ( DOLLARS)	\$37,448
CONGESTED HOURS PER DAY*	3

\*Delays Exceeding 15 Minutes

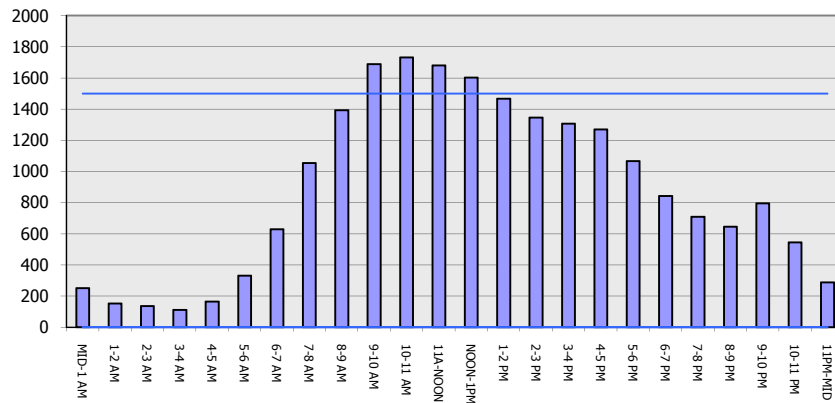
**STH 441: CTH 00 TO CTH CE (OUTAGAMIE COUNTY)**  
**OFF-PEAK DAY CLOSURE**  
**DIVERSION ROUTE: CTH CE - CTH N - CTH 00**

**MAY**  
 Analyzed for 2009  
 Construction Season

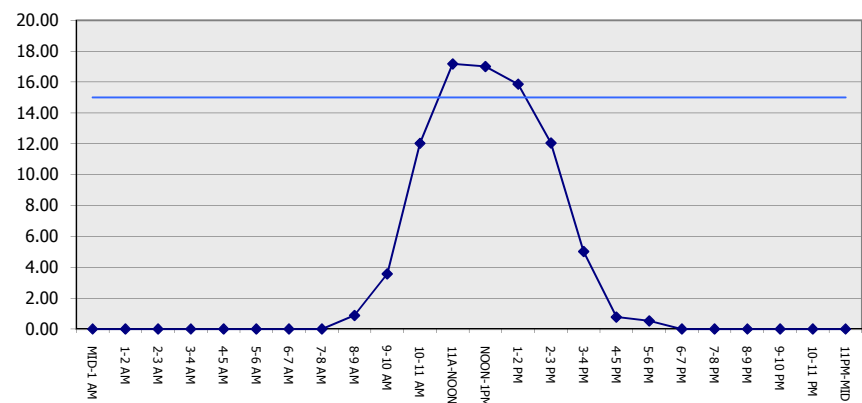
**GRAPHICAL REPRESENTATION OF TRAFFIC MODEL INPUT AND OUTPUT**

**SATURDAY SOUTHBOUND DIRECTION**

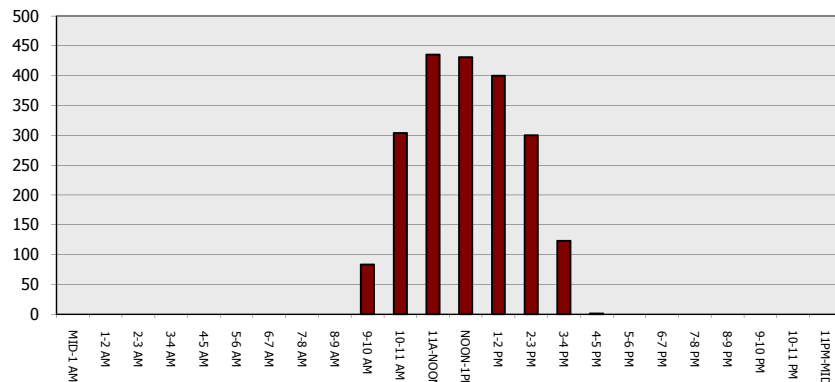
**Main Route - Traffic Demand (Vehicles Per Hour)**



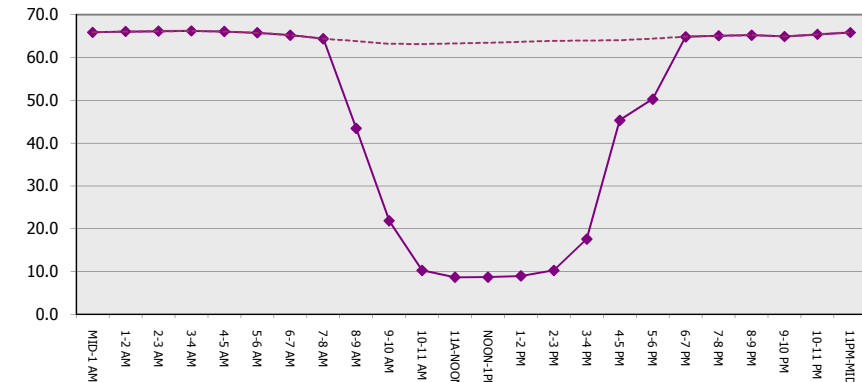
**Main Route Average Delay Per Vehicle (Minutes)**



**Main Route - Average Queue Length (Vehicles)**



**Main Route - Average Speed (MPH)**



**STH 441: CTH OO TO CTH CE (OUTAGAMIE COUNTY)**  
**OFF-PEAK DAY CLOSURE**  
**DIVERSION ROUTE: CTH CE - CTH N - CTH OO**

**MAY**  
 Analyzed for 2009  
 Construction Season

**SUMMARY OF TRAFFIC MODEL OUTPUT**

SATURDAY NORTHBOUND DIRECTION

TIME OF DAY	FLOWS AND CAPACITY IN VEH/HR								AVERAGE SPEEDS IN MPH						
	MAIN		DIVERSION		SITE CAPA CITY	FLOW MAIN ROUTE	FLOW DIVER -TING	TOTAL DIVN FLOW	AV.DEL PER VEH (MINS)	AVERAGE QUEUE (VEH)	MAIN ROUTE		SITE	ALTERNATE ROUTE	
	DEMAND FLOW	PCT HEAVY	NORMAL FLOW	PCT HEAVY							WITHOUT WORK ZN	WITH WORK ZN		WITHOUT WORK ZN	WITH WORK ZN
MID-1 AM	198	0.0	120	0.0	OFF	198	0	120	0.00	0	66.0	66.0	66.0	23.9	23.9
1-2 AM	121	0.0	62	0.0	OFF	121	0	62	0.00	0	66.1	66.1	66.1	24.3	24.3
2-3 AM	94	0.0	63	0.0	OFF	94	0	63	0.00	0	66.2	66.2	66.2	24.3	24.3
3-4 AM	117	0.0	37	0.0	OFF	117	0	37	0.00	0	66.1	66.1	66.1	24.5	24.5
4-5 AM	132	0.0	46	0.0	OFF	132	0	46	0.00	0	66.1	66.1	66.1	24.5	24.5
5-6 AM	206	0.0	94	0.0	OFF	206	0	94	0.00	0	66.0	66.0	66.0	24.1	24.1
6-7 AM	319	0.0	184	0.0	OFF	319	0	184	0.00	0	65.8	65.8	65.8	23.4	23.4
7-8 AM	516	0.0	235	0.0	OFF	516	0	235	0.00	0	65.5	65.5	65.5	23.0	23.0
8-9 AM	753	0.0	305	0.0	1500	753	0	305	0.50	0	65.0	51.2	42.5	22.5	22.5
9-10 AM	953	0.0	380	0.0	1500	953	0	380	0.51	0	64.6	50.6	41.9	21.9	21.9
10-11 AM	1169	0.0	457	0.0	1500	1169	0	457	0.60	0	64.2	48.7	39.5	21.4	21.4
11A-NOON	1365	0.0	522	0.0	1500	1365	0	522	0.85	0	63.8	44.0	33.8	20.9	20.9
NOON-1PM	1465	0.0	556	0.0	1499	1465	0	556	0.98	0	63.7	41.9	31.5	20.6	20.6
1-2 PM	1547	0.0	556	0.0	1499	1547	0	556	1.64	18	63.5	34.0	30.8	20.6	20.6
2-3 PM	1631	0.0	560	0.0	1500	1631	0	560	4.72	106	63.3	18.1	30.8	20.6	20.6
3-4 PM	1746	0.0	539	0.0	1500	1746	0	539	11.92	301	63.2	10.3	30.8	20.7	21.5
4-5 PM	1610	0.0	555	0.0	1499	1513	98	652	17.50	444	63.4	8.6	30.8	20.6	21.3
5-6 PM	1298	0.0	561	0.0	1499	1298	0	561	13.94	352	64.0	9.6	30.8	20.6	21.5
6-7 PM	1078	0.0	498	0.0	OFF	1078	0	498	0.15	9	64.4	59.4	59.4	21.0	21.0
7-8 PM	948	0.0	416	0.0	OFF	948	0	416	0.00	0	64.6	64.6	64.6	21.7	21.7
8-9 PM	838	0.0	358	0.0	OFF	838	0	358	0.00	0	64.8	64.8	64.8	22.1	22.1
9-10 PM	729	0.0	305	0.0	OFF	729	0	305	0.00	0	65.0	65.0	65.0	22.5	22.5
10-11 PM	560	0.0	267	0.0	OFF	560	0	267	0.00	0	65.3	65.3	65.3	22.8	22.8
11PM-MID	403	0.0	170	0.0	OFF	403	0	170	0.00	0	65.6	65.6	65.6	23.5	23.5

"OFF" INDICATES NO ROAD WORK (ALL LANES OPEN TO TRAFFIC)

*----- SITE BREAKDOWN DELAYS -----*	
BREAKDOWN DURATION (MINS)	0
RANGE OF QUEUE DELAY - MIN	0.0
(VEH-H) MAX	0.0
RANGE OF DIVN DELAY - MIN	0.0
(VEH-H) MAX	0.0
AV BREAKDOWNS PER DAY	0.00
AV QUEUE DELAY/DAY (VEH-H)	0.0
AV DIVN DELAY/DAY (VEH-H)	0.0
AV TOTAL DELAY/DAY (VEH-H)	0.0

*----- SITE ACCIDENT DELAYS -----*	
ACCIDENT DURATION (MINS)	0
RANGE OF QUEUE DELAY - MIN	0.0
(VEH-H) MAX	0.0
RANGE OF DIVN DELAY - MIN	0.0
(VEH-H) MAX	0.0
AV ACCIDENTS PER DAY	0.00
AV QUEUE DELAY/DAY (VEH-H)	0.0
AV DIVN DELAY/DAY (VEH-H)	0.0
AV TOTAL DELAY/DAY (VEH-H)	0.0

AVERAGE ACCIDENT NUMBERS (PIA/DAY)	
MAIN ROUTE WITHOUT WORKS	0.0063
MAIN ROUTE WITH WORKS	0.0054
DIVERSION	0.0588

PIA: Personal Injury Accidents

IMPACTS ON ROAD USERS	
ROAD USER COSTS PER DAY ( DOLLARS)	\$23,204
CONGESTED HOURS PER DAY*	1

\*Delays Exceeding 15 Minutes

**STH 441: CTH 00 TO CTH CE (OUTAGAMIE COUNTY)**  
**OFF-PEAK DAY CLOSURE**  
**DIVERSION ROUTE: CTH CE - CTH N - CTH 00**

**MAY**  
 Analyzed for 2009  
 Construction Season

**GRAPHICAL REPRESENTATION OF TRAFFIC MODEL INPUT AND OUTPUT**  
**SATURDAY NORTHBOUND DIRECTION**

