

STH 441: CTH 00 TO CTH CE (OUTAGAMIE COUNTY)
OFF-PEAK DAY CLOSURE
DIVERSION ROUTE: CTH CE - CTH N - CTH 00

MAY
 Analyzed for 2009
 Construction Season

SUMMARY OF TRAFFIC MODEL OUTPUT

FRIDAY SOUTHBOUND DIRECTION

TIME OF DAY	FLOWS AND CAPACITY IN VEH/HR							AVERAGE SPEEDS IN MPH							
	MAIN ROUTE		ALTERNATE ROUTE		SITE CAPA CITY	FLOW MAIN ROUTE	FLOW DIVER -TING	TOTAL DIVN FLOW	AV.DEL PER VEH (MINS)	AVERAGE QUEUE (VEH)	MAIN ROUTE		ALTERNATE ROUTE		
	DEMAND FLOW	PCT HEAVY	NORMAL FLOW	PCT HEAVY							WITHOUT WORK ZN	WITH WORK ZN	SITE	WITHOUT WORK ZN	WITH WORK ZN
MID-1 AM	208	0.0	49	0.0	OFF	208	0	49	0.00	0	66.0	66.0	66.0	24.5	24.5
1-2 AM	149	0.0	41	0.0	OFF	149	0	41	0.00	0	66.1	66.1	66.1	24.5	24.5
2-3 AM	110	0.0	36	0.0	OFF	110	0	36	0.00	0	66.2	66.2	66.2	24.6	24.6
3-4 AM	120	0.0	43	0.0	OFF	120	0	43	0.00	0	66.1	66.1	66.1	24.5	24.5
4-5 AM	182	0.0	118	0.0	OFF	182	0	118	0.00	0	66.1	66.1	66.1	23.9	23.9
5-6 AM	435	0.0	305	0.0	OFF	435	0	305	0.00	0	65.6	65.6	65.6	22.5	22.5
6-7 AM	956	0.0	620	0.0	OFF	956	0	620	0.00	0	64.6	64.6	64.6	20.1	20.1
7-8 AM	1257	0.0	904	0.0	OFF	1257	0	904	0.00	0	64.0	64.0	64.0	17.9	17.9
8-9 AM	1316	0.0	567	0.0	OFF	1316	0	567	0.00	0	64.0	64.0	64.0	20.5	20.5
9-10 AM	1406	0.0	435	0.0	OFF	1406	0	435	0.00	0	63.8	63.8	63.8	21.5	21.5
10-11 AM	1472	0.0	464	0.0	1500	1472	0	464	0.99	0	63.7	41.7	31.4	21.3	21.3
11A-NOON	1470	0.0	495	0.0	1499	1470	0	495	0.99	0	63.7	41.8	31.4	21.1	21.1
NOON-1PM	1583	0.0	519	0.0	1499	1583	0	519	2.07	32	63.5	30.3	30.8	20.9	20.9
1-2 PM	1772	0.0	557	0.0	1500	1772	0	557	8.31	211	63.1	12.7	30.8	20.6	20.9
2-3 PM	1839	0.0	564	0.0	1499	1653	185	750	17.98	459	63.0	8.5	30.8	20.5	20.6
3-4 PM	1955	0.0	673	0.0	OFF	1955	0	673	0.99	63	62.7	41.3	41.3	19.7	19.7
4-5 PM	2249	0.0	710	0.0	OFF	2249	0	710	0.00	0	62.2	62.2	62.2	19.4	19.4
5-6 PM	2300	0.0	653	0.0	OFF	2300	0	653	0.00	0	62.1	62.1	62.1	19.8	19.8
6-7 PM	2016	0.0	475	0.0	OFF	2016	0	475	0.00	0	62.7	62.7	62.7	21.2	21.2
7-8 PM	1264	0.0	315	0.0	OFF	1264	0	315	0.00	0	64.0	64.0	64.0	22.4	22.4
8-9 PM	864	0.0	275	0.0	OFF	864	0	275	0.00	0	64.8	64.8	64.8	22.7	22.7
9-10 PM	728	0.0	237	0.0	OFF	728	0	237	0.00	0	65.0	65.0	65.0	23.0	23.0
10-11 PM	731	0.0	212	0.0	OFF	731	0	212	0.00	0	65.0	65.0	65.0	23.2	23.2
11PM-MID	522	0.0	132	0.0	OFF	522	0	132	0.00	0	65.4	65.4	65.4	23.8	23.8

"OFF" INDICATES NO ROAD WORK (ALL LANES OPEN TO TRAFFIC)

----- SITE BREAKDOWN DELAYS -----	
BREAKDOWN DURATION (MINS)	0
RANGE OF QUEUE DELAY - MIN	0.0
(VEH-H) MAX	0.0
RANGE OF DIVN DELAY - MIN	0.0
(VEH-H) MAX	0.0
AV BREAKDOWNS PER DAY	0.00
AV QUEUE DELAY/DAY (VEH-H)	0.0
AV DIVN DELAY/DAY (VEH-H)	0.0
AV TOTAL DELAY/DAY (VEH-H)	0.0

----- SITE ACCIDENT DELAYS -----	
ACCIDENT DURATION (MINS)	0
RANGE OF QUEUE DELAY - MIN	0.0
(VEH-H) MAX	0.0
RANGE OF DIVN DELAY - MIN	0.0
(VEH-H) MAX	0.0
AV ACCIDENTS PER DAY	0.00
AV QUEUE DELAY/DAY (VEH-H)	0.0
AV DIVN DELAY/DAY (VEH-H)	0.0
AV TOTAL DELAY/DAY (VEH-H)	0.0

AVERAGE ACCIDENT NUMBERS (PIA/DAY)	
MAIN ROUTE WITHOUT WORKS	0.0086
MAIN ROUTE WITH WORKS	0.0080
DIVERSION	0.0709

PIA: Personal Injury Accidents

IMPACTS ON ROAD USERS	
ROAD USER COSTS PER DAY (DOLLARS)	\$11,241
CONGESTED HOURS PER DAY*	1

*Delays Exceeding 15 Minutes

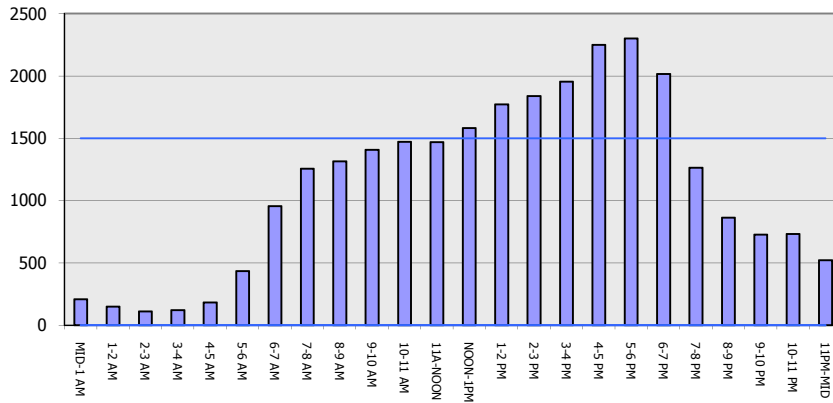
STH 441: CTH 00 TO CTH CE (OUTAGAMIE COUNTY)
OFF-PEAK DAY CLOSURE
DIVERSION ROUTE: CTH CE - CTH N - CTH 00

MAY
 Analyzed for 2009
 Construction Season

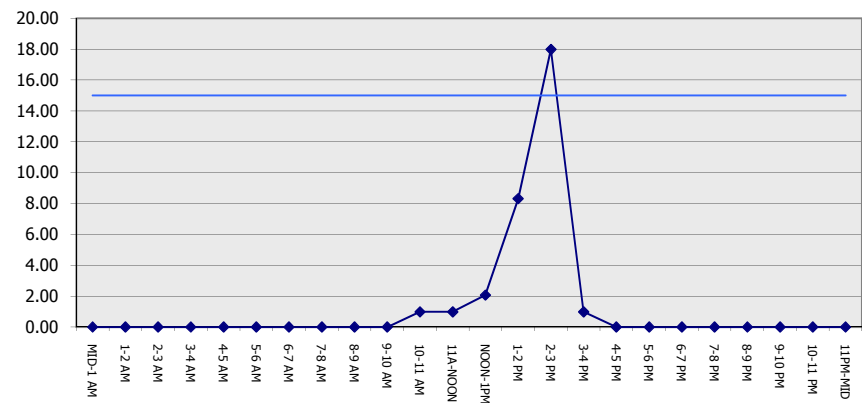
GRAPHICAL REPRESENTATION OF TRAFFIC MODEL INPUT AND OUTPUT

FRIDAY SOUTHBOUND DIRECTION

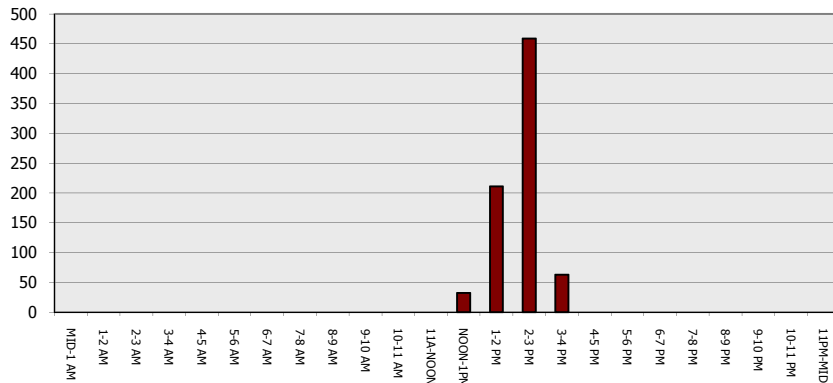
Main Route - Traffic Demand (Vehicles Per Hour)



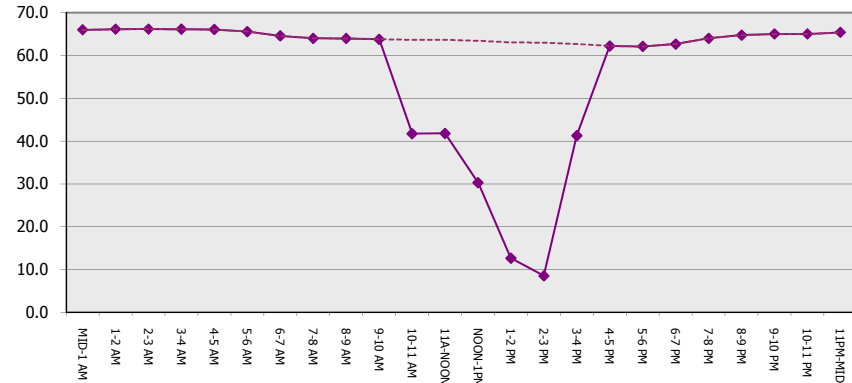
Main Route Average Delay Per Vehicle (Minutes)



Main Route - Average Queue Length (Vehicles)



Main Route - Average Speed (MPH)



STH 441: CTH 00 TO CTH CE (OUTAGAMIE COUNTY)
OFF-PEAK DAY CLOSURE
DIVERSION ROUTE: CTH CE - CTH N - CTH 00

MAY
 Analyzed for 2009
 Construction Season

SUMMARY OF TRAFFIC MODEL OUTPUT

FRIDAY NORTHBOUND DIRECTION

TIME OF DAY	FLOWS AND CAPACITY IN VEH/HR							AVERAGE SPEEDS IN MPH			AVERAGE SPEEDS IN MPH				
	MAIN		DIVERSION		SITE CAPA CITY	FLOW MAIN ROUTE	FLOW DIVER -TING	TOTAL DIVN FLOW	AV.DEL PER VEH (MINS)	AVERAGE QUEUE (VEH)	MAIN ROUTE		ALTERNATE ROUTE		
	DEMAND FLOW	PCT HEAVY	NORMAL FLOW	PCT HEAVY							WITHOUT WORK ZN	WITH WORK ZN	SITE	WITHOUT WORK ZN	WITH WORK ZN
MID-1 AM	143	0.0	82	0.0	OFF	143	0	82	0.00	0	66.1	66.1	66.1	24.2	24.2
1-2 AM	97	0.0	50	0.0	OFF	97	0	50	0.00	0	66.2	66.2	66.2	24.5	24.5
2-3 AM	100	0.0	43	0.0	OFF	100	0	43	0.00	0	66.2	66.2	66.2	24.5	24.5
3-4 AM	134	0.0	35	0.0	OFF	134	0	35	0.00	0	66.1	66.1	66.1	24.6	24.6
4-5 AM	241	0.0	47	0.0	OFF	241	0	47	0.00	0	66.0	66.0	66.0	24.5	24.5
5-6 AM	518	0.0	182	0.0	OFF	518	0	182	0.00	0	65.4	65.4	65.4	23.4	23.4
6-7 AM	884	0.0	505	0.0	OFF	884	0	505	0.00	0	64.7	64.7	64.7	21.0	21.0
7-8 AM	1057	0.0	740	0.0	OFF	1057	0	740	0.00	0	64.4	64.4	64.4	19.2	19.2
8-9 AM	950	0.0	538	0.0	OFF	950	0	538	0.00	0	64.6	64.6	64.6	20.7	20.7
9-10 AM	880	0.0	453	0.0	OFF	880	0	453	0.00	0	64.8	64.8	64.8	21.4	21.4
10-11 AM	903	0.0	510	0.0	1500	903	0	510	0.51	0	64.7	50.7	42.0	20.9	20.9
11A-NOON	1045	0.0	571	0.0	1500	1045	0	571	0.52	0	64.5	50.3	41.5	20.4	20.4
NOON-1PM	1113	0.0	596	0.0	1500	1113	0	596	0.53	0	64.3	50.1	41.3	20.2	20.2
1-2 PM	1342	0.0	646	0.0	1499	1342	0	646	0.82	0	63.9	44.5	34.5	19.9	19.9
2-3 PM	1625	0.0	856	0.0	1499	1625	0	856	2.46	46	63.3	27.6	30.8	18.3	18.3
3-4 PM	1845	0.0	996	0.0	OFF	1845	0	996	0.06	3	63.0	61.0	61.0	17.2	17.2
4-5 PM	1990	0.0	1137	0.0	OFF	1990	0	1137	0.00	0	62.7	62.7	62.7	16.1	16.1
5-6 PM	1825	0.0	980	0.0	OFF	1825	0	980	0.00	0	63.0	63.0	63.0	17.3	17.3
6-7 PM	1359	0.0	653	0.0	OFF	1359	0	653	0.00	0	63.8	63.8	63.8	19.8	19.8
7-8 PM	978	0.0	455	0.0	OFF	978	0	455	0.00	0	64.6	64.6	64.6	21.4	21.4
8-9 PM	840	0.0	407	0.0	OFF	840	0	407	0.00	0	64.8	64.8	64.8	21.7	21.7
9-10 PM	716	0.0	348	0.0	OFF	716	0	348	0.00	0	65.1	65.1	65.1	22.2	22.2
10-11 PM	567	0.0	321	0.0	OFF	567	0	321	0.00	0	65.3	65.3	65.3	22.4	22.4
11PM-MID	385	0.0	195	0.0	OFF	385	0	195	0.00	0	65.6	65.6	65.6	23.3	23.3

"OFF" INDICATES NO ROAD WORK (ALL LANES OPEN TO TRAFFIC)

----- SITE BREAKDOWN DELAYS -----	
BREAKDOWN DURATION (MINS)	0
RANGE OF QUEUE DELAY - MIN	0.0
(VEH-H) MAX	0.0
RANGE OF DIVN DELAY - MIN	0.0
(VEH-H) MAX	0.0
AV BREAKDOWNS PER DAY	0.00
AV QUEUE DELAY/DAY (VEH-H)	0.0
AV DIVN DELAY/DAY (VEH-H)	0.0
AV TOTAL DELAY/DAY (VEH-H)	0.0

----- SITE ACCIDENT DELAYS -----	
ACCIDENT DURATION (MINS)	0
RANGE OF QUEUE DELAY - MIN	0.0
(VEH-H) MAX	0.0
RANGE OF DIVN DELAY - MIN	0.0
(VEH-H) MAX	0.0
AV ACCIDENTS PER DAY	0.00
AV QUEUE DELAY/DAY (VEH-H)	0.0
AV DIVN DELAY/DAY (VEH-H)	0.0
AV TOTAL DELAY/DAY (VEH-H)	0.0

AVERAGE ACCIDENT NUMBERS (PIA/DAY)	
MAIN ROUTE WITHOUT WORKS	0.0069
MAIN ROUTE WITH WORKS	0.0065
DIVERSION	0.0840

PIA: Personal Injury Accidents

IMPACTS ON ROAD USERS	
ROAD USER COSTS PER DAY (DOLLARS)	\$1,368
CONGESTED HOURS PER DAY*	0

*Delays Exceeding 15 Minutes

STH 441: CTH 00 TO CTH CE (OUTAGAMIE COUNTY)
OFF-PEAK DAY CLOSURE
DIVERSION ROUTE: CTH CE - CTH N - CTH OO

MAY
 Analyzed for 2009
 Construction Season

GRAPHICAL REPRESENTATION OF TRAFFIC MODEL INPUT AND OUTPUT
FRIDAY NORTHBOUND DIRECTION

