

**USH 41: STH 15 TO STH 441 (OUTAGAMIE COUNTY)
OFF-PEAK DAY CLOSURE
NO DIVERSION ROUTE (MAX QUEUE METHOD)**

OCTOBER
Analyzed for 2009
Construction Season

SUMMARY OF TRAFFIC MODEL OUTPUT

MON-THUR SOUTHBOUND DIRECTION

TIME OF DAY	FLOWS AND CAPACITY IN VEH/HR						AVERAGE SPEEDS IN MPH				
	MAIN ROUTE		SITE CAPA CITY	FLOW		AV.DEL PER VEH (MINS)	AVERAGE QUEUE (VEH)	MAIN ROUTE		SITE	
	DEMAND FLOW	PCT HEAVY		MAIN ROUTE	'DIVER TED'			WITHOUT WORK ZONE	WITH WORK ZONE		
MID-1 AM	851	0.0	OFF	851	0	0.00	0	64.8	64.8	64.8	
1-2 AM	328	0.0	OFF	328	0	0.00	0	65.8	65.8	65.8	
2-3 AM	125	0.0	OFF	125	0	0.00	0	66.1	66.1	66.1	
3-4 AM	162	0.0	OFF	162	0	0.00	0	66.1	66.1	66.1	
4-5 AM	381	0.0	OFF	381	0	0.00	0	65.7	65.7	65.7	
5-6 AM	1028	0.0	OFF	1028	0	0.00	0	64.5	64.5	64.5	
6-7 AM	2215	0.0	OFF	2215	0	0.00	0	62.3	62.3	62.3	
7-8 AM	3395	0.0	OFF	3395	0	0.00	0	51.7	51.7	51.7	
8-9 AM	2353	0.0	OFF	2353	0	0.00	0	62.0	62.0	62.0	
9-10 AM	1735	0.0	OFF	1735	0	0.00	0	63.2	63.2	63.2	
10-11 AM	1686	0.0	1499	1686	0	4.07	90	63.2	36.6	30.8	
11AM-NOON	1802	0.0	1500	1715	87	12.51+	320	63.0	19.5	30.8	
NOON-1PM	1830	0.0	1500	1500	330	15.80+	400	63.0	16.5	30.8	
1-2 PM	1899	0.0	1500	1500	399	15.79+	400	62.8	16.5	30.8	
2-3 PM	1963	0.0	1500	1500	463	15.78+	400	62.7	16.5	30.8	
3-4 PM	2278	0.0	OFF	2278	0	1.00	46	62.2	52.8	52.8	
4-5 PM	2580	0.0	OFF	2580	0	0.00	0	60.1	60.1	60.1	
5-6 PM	2489	0.0	OFF	2489	0	0.00	0	61.0	61.0	61.0	
6-7 PM	1508	0.0	OFF	1508	0	0.00	0	63.6	63.6	63.6	
7-8 PM	994	0.0	OFF	994	0	0.00	0	64.5	64.5	64.5	
8-9 PM	764	0.0	OFF	764	0	0.00	0	65.0	65.0	65.0	
9-10 PM	662	0.0	OFF	662	0	0.00	0	65.1	65.1	65.1	
10-11 PM	453	0.0	OFF	453	0	0.00	0	65.5	65.5	65.5	
11PM-MID	266	0.0	OFF	266	0	0.00	0	65.9	65.9	65.9	

"OFF" INDICATES NO ROAD WORK (ALL LANES OPEN TO TRAFFIC)

+ INDICATES QUEUEING EXCEEDS USER-SPECIFIED MAXIMUM LIMIT

----- SITE BREAKDOWN DELAYS -----	
BREAKDOWN DURATION (MINS)	0
RANGE OF QUEUE DELAY - MIN (VEH-H) MAX	0.0
AV BREAKDOWNS PER DAY	0.00
AV QUEUE DELAY/DAY (VEH-H)	0.0
AV TOTAL DELAY/DAY (VEH-H)	0.0

----- SITE ACCIDENT DELAYS -----	
BREAKDOWN DURATION (MINS)	0
RANGE OF QUEUE DELAY - MIN (VEH-H) MAX	0
AV BREAKDOWNS PER DAY	0
AV QUEUE DELAY/DAY (VEH-H)	0
AV TOTAL DELAY/DAY (VEH-H)	0

AVERAGE ACCIDENT NUMBERS (PIA/DAY)	
MAIN ROUTE WITHOUT WORKS	0.0317
MAIN ROUTE WITH WORKS	0.0300
'DIVERSION'	0.0028
PIA: Personal Injury Accidents	
IMPACTS ON ROAD USERS	
ROAD USER COSTS PER DAY	\$25,242
CONGESTED HOURS PER DAY*	4

*Delays Exceeding User-Specified Maximum

**USH 41: STH 15 TO STH 441 (OUTAGAMIE COUNTY)
OFF-PEAK DAY CLOSURE
NO DIVERSION ROUTE (MAX QUEUE METHOD)**

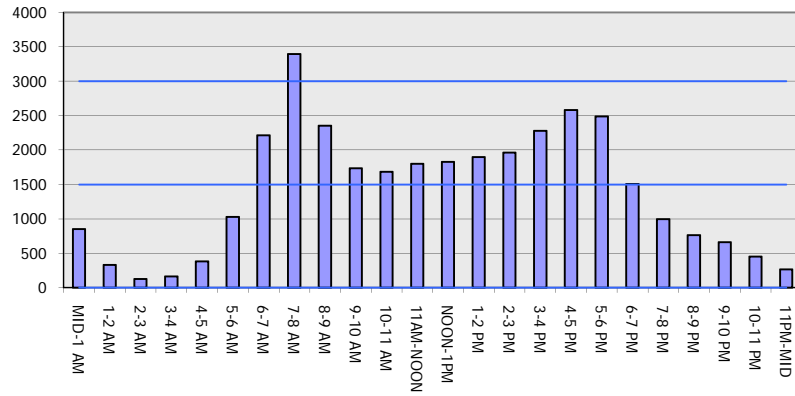
OCTOBER

Analyzed for 2009
Construction Season

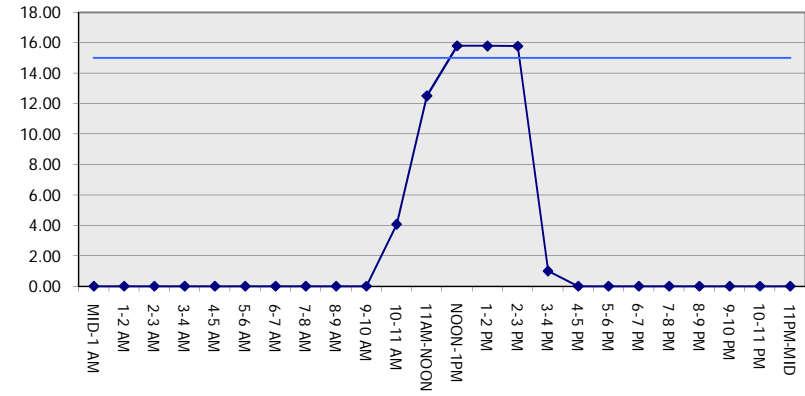
GRAPHICAL REPRESENTATION OF TRAFFIC MODEL INPUT AND OUTPUT

MON-THUR SOUTHBOUND DIRECTION

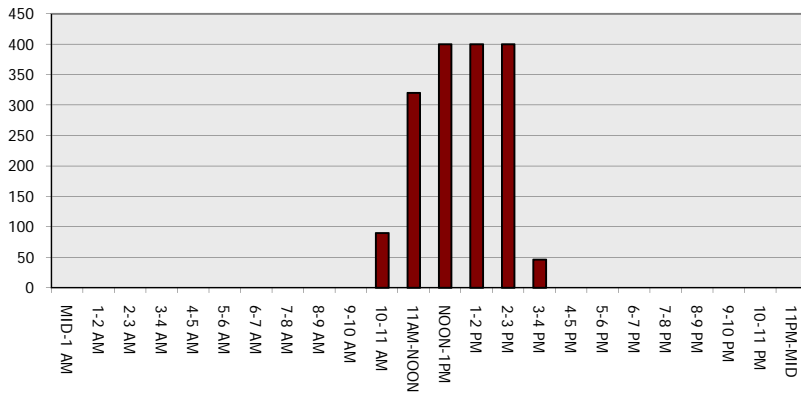
Main Route - Traffic Demand (Vehicles Per Hour)



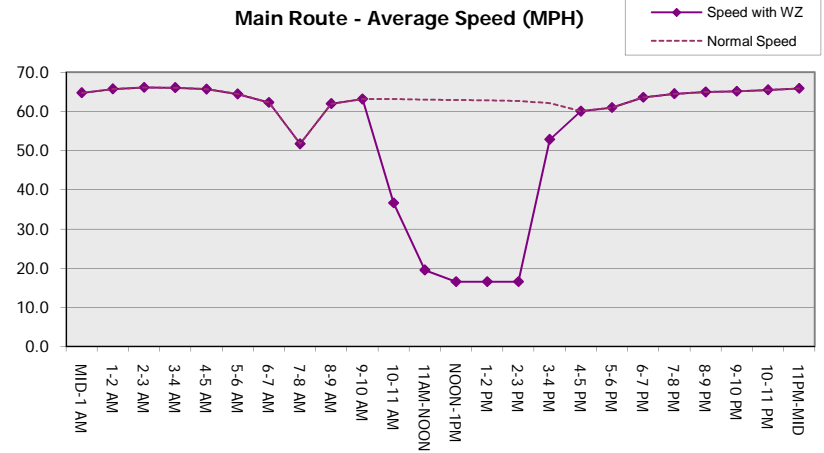
Main Route Average Delay Per Vehicle (Minutes)



Main Route - Average Queue Length (Vehicles)



Main Route - Average Speed (MPH)



USH 41: STH 15 TO STH 441 (OUTAGAMIE COUNTY) OFF-PEAK DAY CLOSURE NO DIVERSION ROUTE (MAX QUEUE METHOD)	OCTOBER
	Analyzed for 2009 Construction Season

SUMMARY OF TRAFFIC MODEL OUTPUT

MON-THUR NORTHBOUND DIRECTION

TIME OF DAY	FLOWS AND CAPACITY IN VEH/HR						AVERAGE SPEEDS IN MPH			
	MAIN ROUTE		SITE CAPA CITY	FLOW		AV.DEL PER VEH (MINS)	AVERAGE QUEUE (VEH)	MAIN ROUTE		SITE
	DEMAND FLOW	PCT HEAVY		MAIN ROUTE	'DIVER TED'			WITHOUT WORK ZONE	WITH WORK ZONE	
MID-1 AM	231	0.0	OFF	231	0	0.00	0	66.0	66.0	66.0
1-2 AM	190	0.0	OFF	190	0	0.00	0	66.0	66.0	66.0
2-3 AM	197	0.0	OFF	197	0	0.00	0	66.0	66.0	66.0
3-4 AM	170	0.0	OFF	170	0	0.00	0	66.1	66.1	66.1
4-5 AM	274	0.0	OFF	274	0	0.00	0	65.9	65.9	65.9
5-6 AM	700	0.0	OFF	700	0	0.00	0	65.1	65.1	65.1
6-7 AM	1440	0.0	OFF	1440	0	0.00	0	63.7	63.7	63.7
7-8 AM	2218	0.0	OFF	2218	0	0.00	0	62.2	62.2	62.2
8-9 AM	1634	0.0	OFF	1634	0	0.00	0	63.3	63.3	63.3
9-10 AM	1429	0.0	OFF	1429	0	0.00	0	63.7	63.7	63.7
10-11 AM	1477	0.0	1499	1477	0	0.99	0	63.7	54.0	31.2
11AM-NOON	1593	0.0	1499	1593	0	2.42	40	63.4	44.2	30.8
NOON-1PM	1677	0.0	1500	1677	0	7.35	177	63.3	27.3	30.8
1-2 PM	1740	0.0	1499	1595	145	14.14+	358	63.2	17.9	30.8
2-3 PM	2098	0.0	1500	1500	598	15.75+	400	62.5	16.5	30.8
3-4 PM	2724	0.0	OFF	2724	0	1.20	52	58.6	48.9	48.9
4-5 PM	3149	0.0	OFF	3149	0	0.00	0	54.2	54.2	54.2
5-6 PM	2771	0.0	OFF	2771	0	0.00	0	58.1	58.1	58.1
6-7 PM	1632	0.0	OFF	1632	0	0.00	0	63.3	63.3	63.3
7-8 PM	1178	0.0	OFF	1178	0	0.00	0	64.2	64.2	64.2
8-9 PM	1073	0.0	OFF	1073	0	0.00	0	64.4	64.4	64.4
9-10 PM	817	0.0	OFF	817	0	0.00	0	64.8	64.8	64.8
10-11 PM	437	0.0	OFF	437	0	0.00	0	65.6	65.6	65.6
11PM-MID	272	0.0	OFF	272	0	0.00	0	65.9	65.9	65.9

"OFF" INDICATES NO ROAD WORK (ALL LANES OPEN TO TRAFFIC)

+ INDICATES QUEUEING EXCEEDS USER-SPECIFIED MAXIMUM LIMIT

BREAKDOWN DURATION (MINS)	0
RANGE OF QUEUE DELAY - MIN (VEH-H) MAX	0.0
AV BREAKDOWNS PER DAY	0.00
AV QUEUE DELAY/DAY (VEH-H)	0.0
AV TOTAL DELAY/DAY (VEH-H)	0.0

BREAKDOWN DURATION (MINS)	0
RANGE OF QUEUE DELAY - MIN (VEH-H) MAX	0
AV BREAKDOWNS PER DAY	0
AV QUEUE DELAY/DAY (VEH-H)	0
AV TOTAL DELAY/DAY (VEH-H)	0

MAIN ROUTE WITHOUT WORKS	0.0292
MAIN ROUTE WITH WORKS	0.0280
'DIVERSION'	0.0016

PIA: Personal Injury Accidents

ROAD USER COSTS PER DAY	\$16,313
CONGESTED HOURS PER DAY*	2

*Delays Exceeding User-Specified Maximum

**USH 41: STH 15 TO STH 441 (OUTAGAMIE COUNTY)
OFF-PEAK DAY CLOSURE
NO DIVERSION ROUTE (MAX QUEUE METHOD)**

OCTOBER

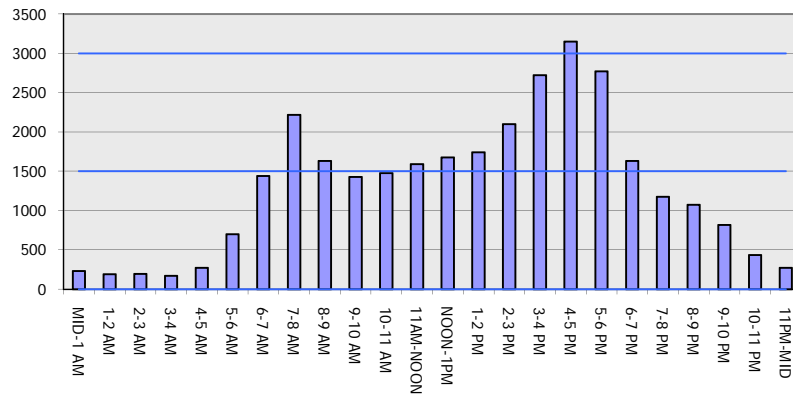
Analyzed for 2009
Construction Season

GRAPHICAL REPRESENTATION OF TRAFFIC MODEL INPUT AND OUTPUT

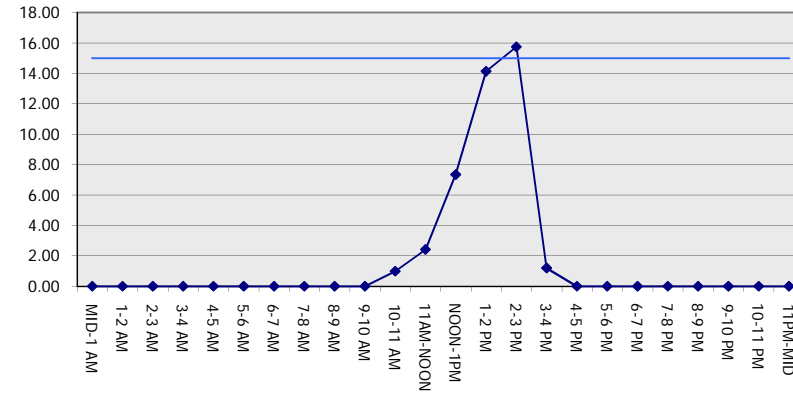
MON-THUR

NORTHBOUND DIRECTION

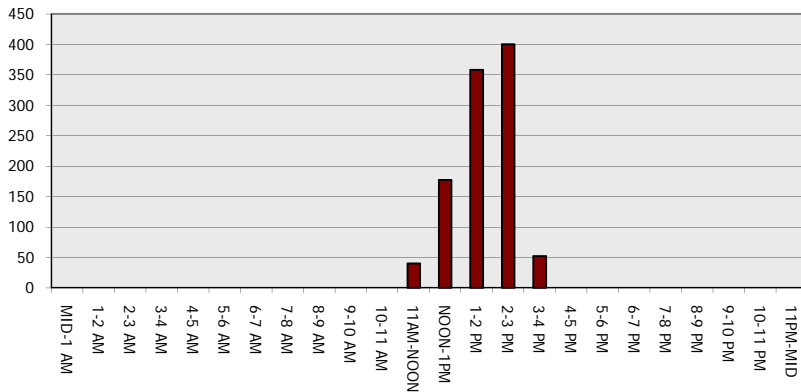
Main Route - Traffic Demand (Vehicles Per Hour)



Main Route Average Delay Per Vehicle (Minutes)



Main Route - Average Queue Length (Vehicles)



Main Route - Average Speed (MPH)

