

USH 41: STH 15 TO STH 441 (OUTAGAMIE COUNTY) OFF-PEAK DAY CLOSURE NO DIVERSION ROUTE (MAX QUEUE METHOD)	AUGUST
	Analyzed for 2009 Construction Season

SUMMARY OF TRAFFIC MODEL OUTPUT

MON-THUR SOUTHBOUND DIRECTION

TIME OF DAY	FLOWS AND CAPACITY IN VEH/HR						AVERAGE SPEEDS IN MPH			
	MAIN ROUTE		SITE CAPA CITY	FLOW		AV.DEL PER VEH (MINS)	AVERAGE QUEUE (VEH)	MAIN ROUTE		SITE
	DEMAND FLOW	PCT HEAVY		MAIN ROUTE	'DIVER TED'			WITHOUT WORK ZONE	WITH WORK ZONE	
MID-1 AM	218	0.0	OFF	218	0	0.00	0	66.0	66.0	66.0
1-2 AM	131	0.0	OFF	131	0	0.00	0	66.1	66.1	66.1
2-3 AM	112	0.0	OFF	112	0	0.00	0	66.2	66.2	66.2
3-4 AM	179	0.0	OFF	179	0	0.00	0	66.1	66.1	66.1
4-5 AM	409	0.0	OFF	409	0	0.00	0	65.6	65.6	65.6
5-6 AM	1127	0.0	OFF	1127	0	0.00	0	64.3	64.3	64.3
6-7 AM	2136	0.0	OFF	2136	0	0.00	0	62.4	62.4	62.4
7-8 AM	3063	0.0	OFF	3063	0	0.00	0	55.1	55.1	55.1
8-9 AM	2171	0.0	OFF	2171	0	0.00	0	62.3	62.3	62.3
9-10 AM	1743	0.0	OFF	1743	0	0.00	0	63.2	63.2	63.2
10-11 AM	1807	0.0	1499	1807	0	5.83	149	63.0	30.9	30.8
11AM-NOON	1886	0.0	1499	1611	275	15.34+	388	62.8	16.9	30.8
NOON-1PM	2012	0.0	1500	1500	512	15.77+	400	62.7	16.5	30.8
1-2 PM	2078	0.0	1500	1500	578	15.76+	400	62.5	16.5	30.8
2-3 PM	2122	0.0	1500	1500	622	15.75+	400	62.4	16.5	30.8
3-4 PM	2227	0.0	OFF	2227	0	1.01	49	62.2	52.8	52.8
4-5 PM	2625	0.0	OFF	2625	0	0.00	0	59.6	59.6	59.6
5-6 PM	2695	0.0	OFF	2695	0	0.00	0	58.9	58.9	58.9
6-7 PM	1798	0.0	OFF	1798	0	0.00	0	63.0	63.0	63.0
7-8 PM	1122	0.0	OFF	1122	0	0.00	0	64.3	64.3	64.3
8-9 PM	951	0.0	OFF	951	0	0.00	0	64.6	64.6	64.6
9-10 PM	772	0.0	OFF	772	0	0.00	0	65.0	65.0	65.0
10-11 PM	565	0.0	OFF	565	0	0.00	0	65.3	65.3	65.3
11PM-MID	432	0.0	OFF	432	0	0.00	0	65.6	65.6	65.6

"OFF" INDICATES NO ROAD WORK (ALL LANES OPEN TO TRAFFIC)

+ INDICATES QUEUEING EXCEEDS USER-SPECIFIED MAXIMUM LIMIT

----- SITE BREAKDOWN DELAYS -----	
BREAKDOWN DURATION (MINS)	0
RANGE OF QUEUE DELAY - MIN (VEH-H) MAX	0.0
AV BREAKDOWNS PER DAY	0.00
AV QUEUE DELAY/DAY (VEH-H)	0.0
AV TOTAL DELAY/DAY (VEH-H)	0.0

----- SITE ACCIDENT DELAYS -----	
BREAKDOWN DURATION (MINS)	0
RANGE OF QUEUE DELAY - MIN (VEH-H) MAX	0
AV BREAKDOWNS PER DAY	0
AV QUEUE DELAY/DAY (VEH-H)	0
AV TOTAL DELAY/DAY (VEH-H)	0

AVERAGE ACCIDENT NUMBERS (PIA/DAY)	
MAIN ROUTE WITHOUT WORKS	0.0323
MAIN ROUTE WITH WORKS	0.0299
'DIVERSION'	0.0043
PIA: Personal Injury Accidents	
IMPACTS ON ROAD USERS	
ROAD USER COSTS PER DAY	\$29,450
CONGESTED HOURS PER DAY*	4

*Delays Exceeding User-Specified Maximum

**USH 41: STH 15 TO STH 441 (OUTAGAMIE COUNTY)
OFF-PEAK DAY CLOSURE
NO DIVERSION ROUTE (MAX QUEUE METHOD)**

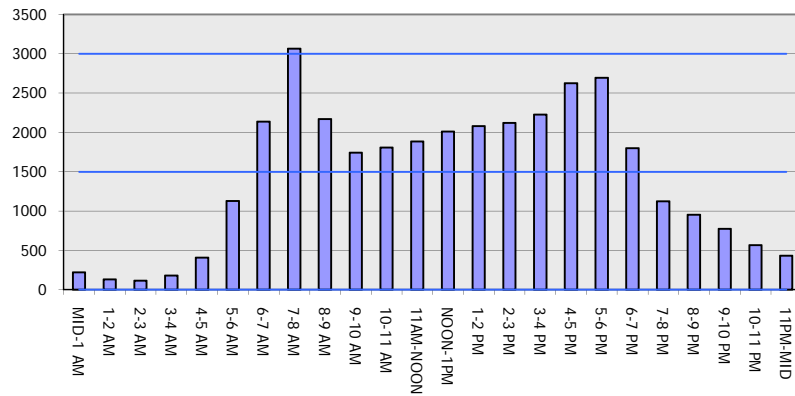
AUGUST

Analyzed for 2009
Construction Season

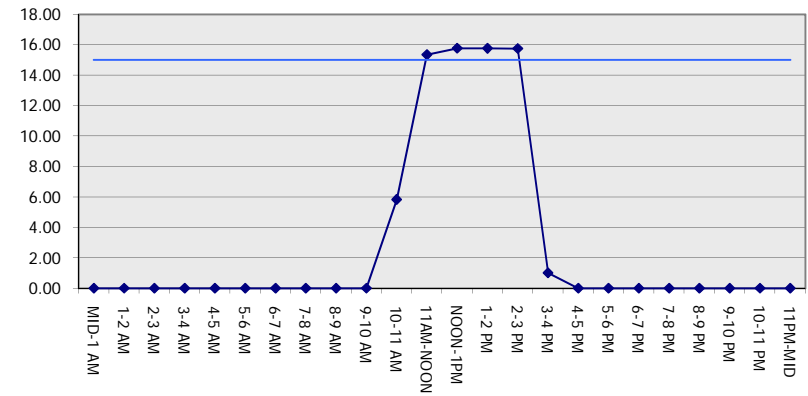
GRAPHICAL REPRESENTATION OF TRAFFIC MODEL INPUT AND OUTPUT

MON-THUR SOUTHBOUND DIRECTION

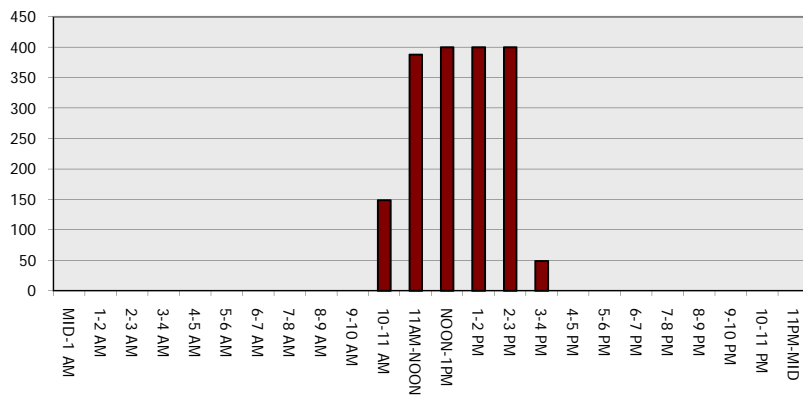
Main Route - Traffic Demand (Vehicles Per Hour)



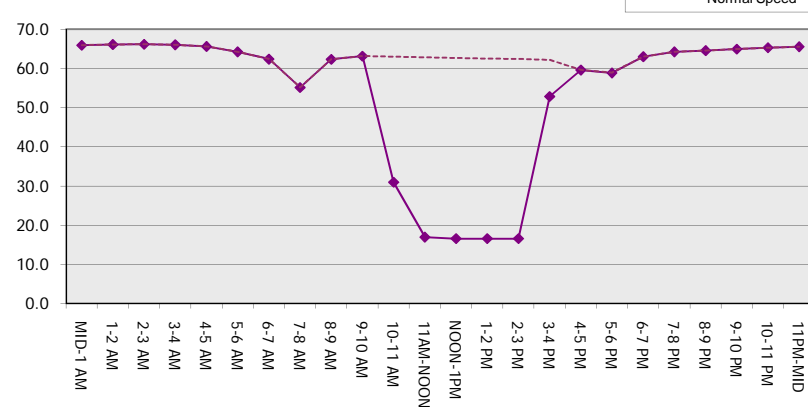
Main Route Average Delay Per Vehicle (Minutes)



Main Route - Average Queue Length (Vehicles)



Main Route - Average Speed (MPH)



USH 41: STH 15 TO STH 441 (OUTAGAMIE COUNTY) OFF-PEAK DAY CLOSURE NO DIVERSION ROUTE (MAX QUEUE METHOD)	AUGUST
	Analyzed for 2009 Construction Season

SUMMARY OF TRAFFIC MODEL OUTPUT

MON-THUR NORTHBOUND DIRECTION

TIME OF DAY	FLOWS AND CAPACITY IN VEH/HR						AVERAGE SPEEDS IN MPH			
	MAIN ROUTE		SITE CAPA CITY	FLOW		AV.DEL PER VEH (MINS)	AVERAGE QUEUE (VEH)	MAIN ROUTE		SITE
	DEMAND FLOW	PCT HEAVY		MAIN ROUTE	'DIVER TED'			WITHOUT WORK ZONE	WITH WORK ZONE	
MID-1 AM	226	0.0	OFF	226	0	0.00	0	66.0	66.0	66.0
1-2 AM	139	0.0	OFF	139	0	0.00	0	66.1	66.1	66.1
2-3 AM	137	0.0	OFF	137	0	0.00	0	66.1	66.1	66.1
3-4 AM	116	0.0	OFF	116	0	0.00	0	66.2	66.2	66.2
4-5 AM	237	0.0	OFF	237	0	0.00	0	66.0	66.0	66.0
5-6 AM	731	0.0	OFF	731	0	0.00	0	65.0	65.0	65.0
6-7 AM	1416	0.0	OFF	1416	0	0.00	0	63.8	63.8	63.8
7-8 AM	2016	0.0	OFF	2016	0	0.00	0	62.7	62.7	62.7
8-9 AM	1585	0.0	OFF	1585	0	0.00	0	63.4	63.4	63.4
9-10 AM	1498	0.0	OFF	1498	0	0.00	0	63.6	63.6	63.6
10-11 AM	1597	0.0	1499	1597	0	2.45	41	63.4	44.1	30.8
11AM-NOON	1729	0.0	1500	1729	0	8.20	204	63.2	25.6	30.8
NOON-1PM	1850	0.0	1499	1576	274	15.47+	391	63.0	16.8	30.8
1-2 PM	1939	0.0	1500	1500	439	15.78+	400	62.8	16.5	30.8
2-3 PM	2276	0.0	1500	1500	776	15.72+	400	62.2	16.5	30.8
3-4 PM	2678	0.0	OFF	2678	0	1.37	61	59.1	48.1	48.1
4-5 PM	3278	0.0	OFF	3278	0	0.00	0	52.9	52.9	52.9
5-6 PM	2837	0.0	OFF	2837	0	0.00	0	57.4	57.4	57.4
6-7 PM	1759	0.0	OFF	1759	0	0.00	0	63.1	63.1	63.1
7-8 PM	1326	0.0	OFF	1326	0	0.00	0	63.9	63.9	63.9
8-9 PM	1245	0.0	OFF	1245	0	0.00	0	64.1	64.1	64.1
9-10 PM	1051	0.0	OFF	1051	0	0.00	0	64.4	64.4	64.4
10-11 PM	696	0.0	OFF	696	0	0.00	0	65.1	65.1	65.1
11PM-MID	361	0.0	OFF	361	0	0.00	0	65.7	65.7	65.7

"OFF" INDICATES NO ROAD WORK (ALL LANES OPEN TO TRAFFIC)

+ INDICATES QUEUEING EXCEEDS USER-SPECIFIED MAXIMUM LIMIT

----- SITE BREAKDOWN DELAYS -----	
BREAKDOWN DURATION (MINS)	0
RANGE OF QUEUE DELAY - MIN (VEH-H) MAX	0.0
AV BREAKDOWNS PER DAY	0.00
AV QUEUE DELAY/DAY (VEH-H)	0.0
AV TOTAL DELAY/DAY (VEH-H)	0.0

----- SITE ACCIDENT DELAYS -----	
BREAKDOWN DURATION (MINS)	0
RANGE OF QUEUE DELAY - MIN (VEH-H) MAX	0
AV BREAKDOWNS PER DAY	0
AV QUEUE DELAY/DAY (VEH-H)	0
AV TOTAL DELAY/DAY (VEH-H)	0

AVERAGE ACCIDENT NUMBERS (PIA/DAY)	
MAIN ROUTE WITHOUT WORKS	0.0307
MAIN ROUTE WITH WORKS	0.0288
'DIVERSION'	0.0032

PIA: Personal Injury Accidents

ECONOMIC IMPACT ON ROAD USERS	
ROAD USER COSTS PER DAY	\$24,628
CONGESTED HOURS PER DAY*	3

*Delays Exceeding User-Specified Maximum

**USH 41: STH 15 TO STH 441 (OUTAGAMIE COUNTY)
OFF-PEAK DAY CLOSURE
NO DIVERSION ROUTE (MAX QUEUE METHOD)**

AUGUST
Analyzed for 2009
Construction Season

GRAPHICAL REPRESENTATION OF TRAFFIC MODEL INPUT AND OUTPUT
MON-THUR NORTHBOUND DIRECTION

