

<b>USH 41: STH 15 TO STH 441 (OUTAGAMIE COUNTY)</b> <b>OFF-PEAK DAY CLOSURE</b> <b>NO DIVERSION ROUTE (MAX QUEUE METHOD)</b>	<b>AUGUST</b>
	Analyzed for 2009 Construction Season

**SUMMARY OF TRAFFIC MODEL OUTPUT**

FRIDAY      SOUTHBOUND DIRECTION

TIME OF DAY	FLOWS AND CAPACITY IN VEH/HR						AVERAGE SPEEDS IN MPH				
	MAIN ROUTE		SITE CAPA CITY	FLOW		AV.DEL PER VEH (MINS)	AVERAGE QUEUE (VEH)	MAIN ROUTE		SITE	
	DEMAND FLOW	PCT HEAVY		MAIN ROUTE	'DIVER TED'			WITHOUT WORK ZONE	WITH WORK ZONE		
MID-1 AM	245	0.0	OFF	245	0	0.00	0	66.0	66.0	66.0	
1-2 AM	157	0.0	OFF	157	0	0.00	0	66.1	66.1	66.1	
2-3 AM	170	0.0	OFF	170	0	0.00	0	66.1	66.1	66.1	
3-4 AM	148	0.0	OFF	148	0	0.00	0	66.1	66.1	66.1	
4-5 AM	466	0.0	OFF	466	0	0.00	0	65.5	65.5	65.5	
5-6 AM	880	0.0	OFF	880	0	0.00	0	64.8	64.8	64.8	
6-7 AM	1840	0.0	OFF	1840	0	0.00	0	63.0	63.0	63.0	
7-8 AM	2716	0.0	OFF	2716	0	0.00	0	58.7	58.7	58.7	
8-9 AM	2095	0.0	OFF	2095	0	0.00	0	62.5	62.5	62.5	
9-10 AM	1863	0.0	OFF	1863	0	0.00	0	62.9	62.9	62.9	
10-11 AM	1982	0.0	1499	1982	0	8.32+	235	62.7	25.3	30.8	
11AM-NOON	2053	0.0	1500	1428	625	15.50+	393	62.5	16.7	31.0	
NOON-1PM	2215	0.0	1500	1500	715	15.73+	400	62.3	16.5	30.8	
1-2 PM	2348	0.0	1500	1500	848	15.71+	400	62.0	16.5	30.8	
2-3 PM	2347	0.0	1500	1500	847	15.71+	400	62.0	16.5	30.8	
3-4 PM	2517	0.0	OFF	2517	0	1.29	56	60.7	49.7	49.7	
4-5 PM	2762	0.0	OFF	2762	0	0.00	0	58.2	58.2	58.2	
5-6 PM	2598	0.0	OFF	2598	0	0.00	0	59.9	59.9	59.9	
6-7 PM	1861	0.0	OFF	1861	0	0.00	0	62.9	62.9	62.9	
7-8 PM	1239	0.0	OFF	1239	0	0.00	0	64.1	64.1	64.1	
8-9 PM	956	0.0	OFF	956	0	0.00	0	64.6	64.6	64.6	
9-10 PM	818	0.0	OFF	818	0	0.00	0	64.8	64.8	64.8	
10-11 PM	742	0.0	OFF	742	0	0.00	0	65.0	65.0	65.0	
11PM-MID	531	0.0	OFF	531	0	0.00	0	65.4	65.4	65.4	

"OFF" INDICATES NO ROAD WORK (ALL LANES OPEN TO TRAFFIC)

+ INDICATES QUEUEING EXCEEDS USER-SPECIFIED MAXIMUM LIMIT

BREAKDOWN DURATION (MINS)	0
RANGE OF QUEUE DELAY - MIN (VEH-H) MAX	0.0
AV BREAKDOWNS PER DAY	0.00
AV QUEUE DELAY/DAY (VEH-H)	0.0
AV TOTAL DELAY/DAY (VEH-H)	0.0

BREAKDOWN DURATION (MINS)	0
RANGE OF QUEUE DELAY - MIN (VEH-H) MAX	0
AV BREAKDOWNS PER DAY	0
AV QUEUE DELAY/DAY (VEH-H)	0
AV TOTAL DELAY/DAY (VEH-H)	0

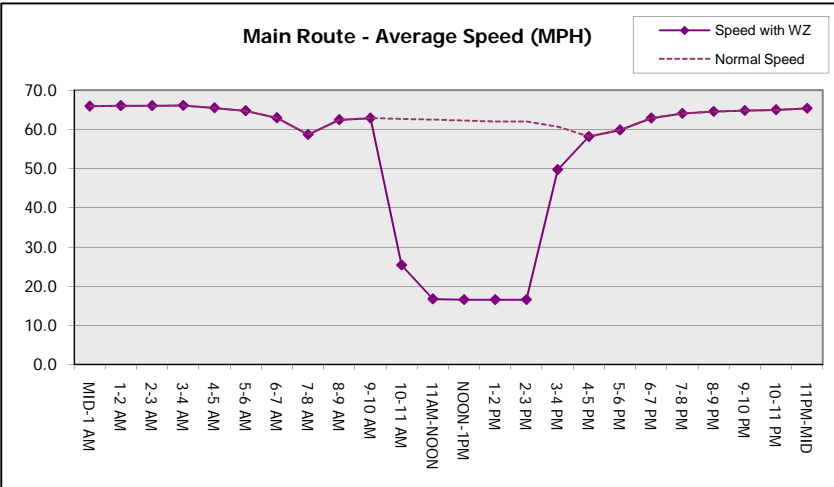
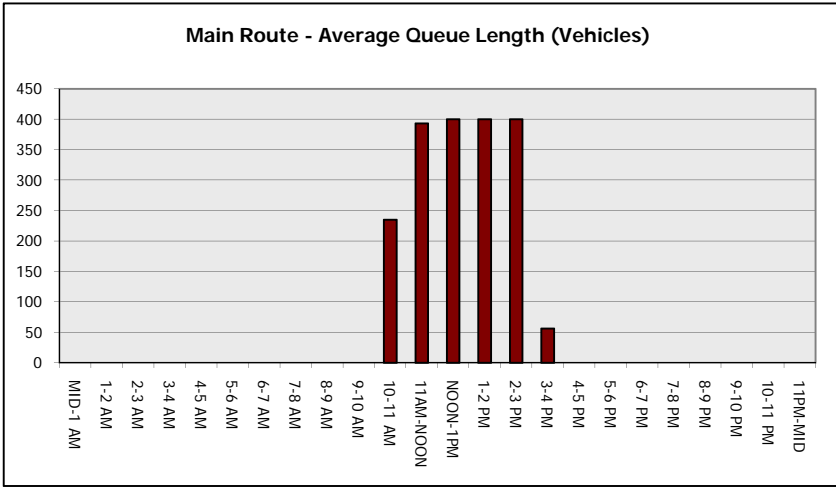
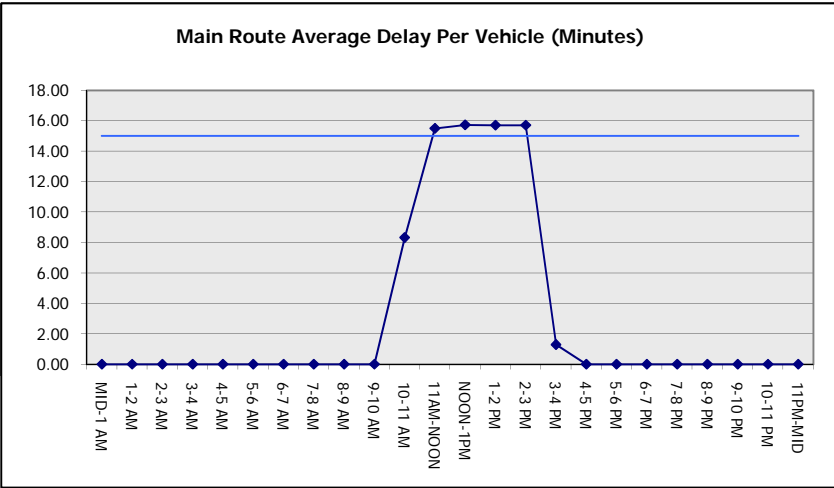
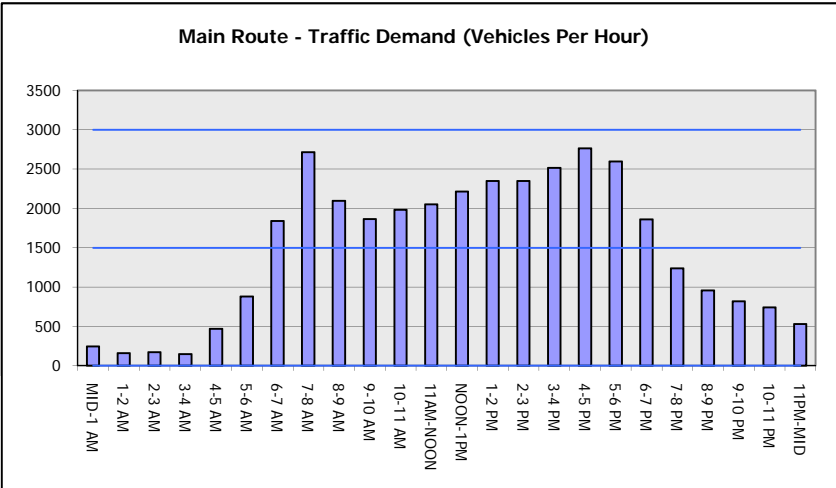
MAIN ROUTE WITHOUT WORKS	0.0334
MAIN ROUTE WITH WORKS	0.0300
'DIVERSION'	0.0066
PIA: Personal Injury Accidents	
<b>IMPACTS ON ROAD USERS</b>	
ROAD USER COSTS PER DAY	\$35,341
CONGESTED HOURS PER DAY*	5

\*Delays Exceeding User-Specified Maximum

**USH 41: STH 15 TO STH 441 (OUTAGAMIE COUNTY)  
OFF-PEAK DAY CLOSURE  
NO DIVERSION ROUTE (MAX QUEUE METHOD)**

**AUGUST**  
Analyzed for 2009  
Construction Season

**GRAPHICAL REPRESENTATION OF TRAFFIC MODEL INPUT AND OUTPUT**  
**FRIDAY SOUTHBOUND DIRECTION**



<b>USH 41: STH 15 TO STH 441 (OUTAGAMIE COUNTY)</b> <b>OFF-PEAK DAY CLOSURE</b> <b>NO DIVERSION ROUTE (MAX QUEUE METHOD)</b>	<b>AUGUST</b>
	Analyzed for 2009 Construction Season

**SUMMARY OF TRAFFIC MODEL OUTPUT**

FRIDAY NORTHBOUND DIRECTION

TIME OF DAY	FLOWS AND CAPACITY IN VEH/HR						AVERAGE SPEEDS IN MPH			
	MAIN ROUTE		SITE CAPA CITY	FLOW		AV.DEL PER VEH (MINS)	AVERAGE QUEUE (VEH)	MAIN ROUTE		SITE
	DEMAND FLOW	PCT HEAVY		MAIN ROUTE	'DIVER TED'			WITHOUT WORK ZONE	WITH WORK ZONE	
MID-1 AM	274	0.0	OFF	274	0	0.00	0	65.9	65.9	65.9
1-2 AM	184	0.0	OFF	184	0	0.00	0	66.0	66.0	66.0
2-3 AM	179	0.0	OFF	179	0	0.00	0	66.1	66.1	66.1
3-4 AM	148	0.0	OFF	148	0	0.00	0	66.1	66.1	66.1
4-5 AM	271	0.0	OFF	271	0	0.00	0	65.9	65.9	65.9
5-6 AM	725	0.0	OFF	725	0	0.00	0	65.0	65.0	65.0
6-7 AM	1280	0.0	OFF	1280	0	0.00	0	64.0	64.0	64.0
7-8 AM	1812	0.0	OFF	1812	0	0.00	0	63.0	63.0	63.0
8-9 AM	1542	0.0	OFF	1542	0	0.00	0	63.5	63.5	63.5
9-10 AM	1594	0.0	OFF	1594	0	0.00	0	63.4	63.4	63.4
10-11 AM	1839	0.0	1499	1839	0	5.88	154	63.0	30.8	30.8
11AM-NOON	2074	0.0	1499	1502	572	15.75+	399	62.5	16.5	30.8
NOON-1PM	2219	0.0	1500	1500	719	15.73+	400	62.2	16.5	30.8
1-2 PM	2433	0.0	1499	1500	933	15.67+	400	61.6	16.5	30.8
2-3 PM	2575	0.0	1500	1500	1075	15.53+	400	60.1	16.5	30.8
3-4 PM	2877	0.0	OFF	2877	0	1.18	51	57.0	47.9	47.9
4-5 PM	3314	0.0	OFF	3314	0	0.00	0	52.5	52.5	52.5
5-6 PM	2815	0.0	OFF	2815	0	0.00	0	57.6	57.6	57.6
6-7 PM	2018	0.0	OFF	2018	0	0.00	0	62.6	62.6	62.6
7-8 PM	1454	0.0	OFF	1454	0	0.00	0	63.7	63.7	63.7
8-9 PM	1363	0.0	OFF	1363	0	0.00	0	63.8	63.8	63.8
9-10 PM	1159	0.0	OFF	1159	0	0.00	0	64.2	64.2	64.2
10-11 PM	820	0.0	OFF	820	0	0.00	0	64.8	64.8	64.8
11PM-MID	530	0.0	OFF	530	0	0.00	0	65.4	65.4	65.4

"OFF" INDICATES NO ROAD WORK (ALL LANES OPEN TO TRAFFIC)

+ INDICATES QUEUEING EXCEEDS USER-SPECIFIED MAXIMUM LIMIT

*----- SITE BREAKDOWN DELAYS -----*	
BREAKDOWN DURATION (MINS)	0
RANGE OF QUEUE DELAY - MIN (VEH-H) MAX	0.0
AV BREAKDOWNS PER DAY	0.00
AV QUEUE DELAY/DAY (VEH-H)	0.0
AV TOTAL DELAY/DAY (VEH-H)	0.0

*----- SITE ACCIDENT DELAYS -----*	
BREAKDOWN DURATION (MINS)	0
RANGE OF QUEUE DELAY - MIN (VEH-H) MAX	0
AV BREAKDOWNS PER DAY	0
AV QUEUE DELAY/DAY (VEH-H)	0
AV TOTAL DELAY/DAY (VEH-H)	0

AVERAGE ACCIDENT NUMBERS (PIA/DAY)	
MAIN ROUTE WITHOUT WORKS	0.0334
MAIN ROUTE WITH WORKS	0.0297
'DIVERSION'	0.0072

PIA: Personal Injury Accidents

ECONOMIC IMPACT ON ROAD USERS	
ROAD USER COSTS PER DAY	\$35,283
CONGESTED HOURS PER DAY*	4

\*Delays Exceeding User-Specified Maximum

**USH 41: STH 15 TO STH 441 (OUTAGAMIE COUNTY)  
OFF-PEAK DAY CLOSURE  
NO DIVERSION ROUTE (MAX QUEUE METHOD)**

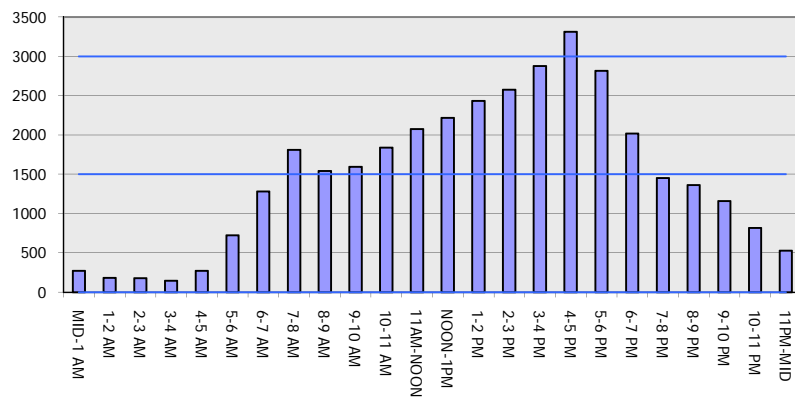
**AUGUST**

Analyzed for 2009  
Construction Season

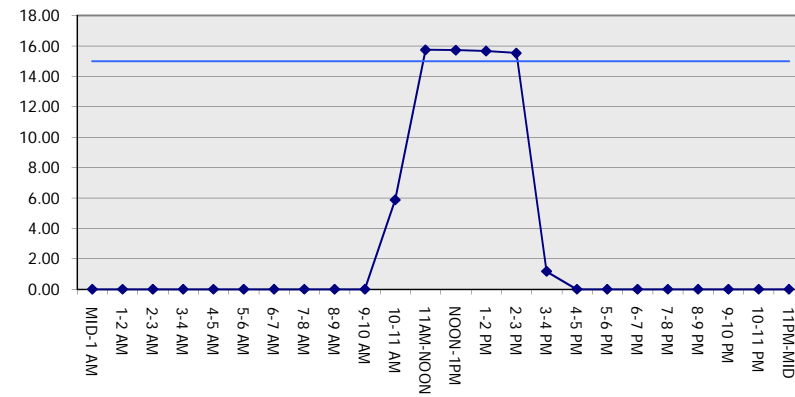
**GRAPHICAL REPRESENTATION OF TRAFFIC MODEL INPUT AND OUTPUT**

**FRIDAY NORTHBOUND DIRECTION**

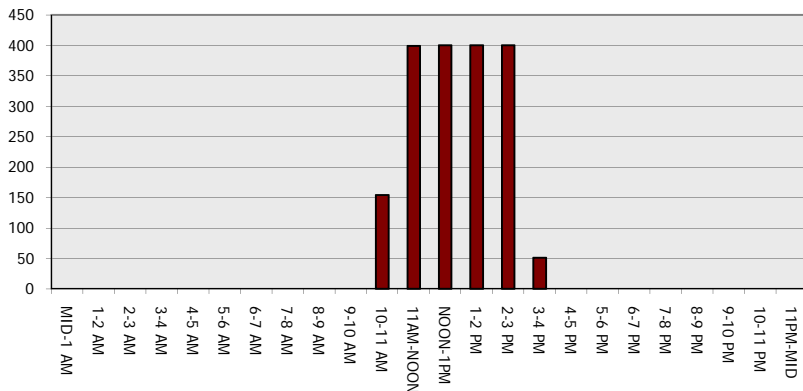
**Main Route - Traffic Demand (Vehicles Per Hour)**



**Main Route Average Delay Per Vehicle (Minutes)**



**Main Route - Average Queue Length (Vehicles)**



**Main Route - Average Speed (MPH)**

