

USH 41: STH 15 TO STH 125 (OUTAGAMIE COUNTY) OFF-PEAK DAY 2 LANE CLOSURE NO DIVERSION ROUTE (MAX QUEUE METHOD)	AUGUST
	Analyzed for 2009 Construction Season

SUMMARY OF TRAFFIC MODEL OUTPUT

MON-THUR SOUTHBOUND DIRECTION

TIME OF DAY	FLOWS AND CAPACITY IN VEH/HR						AVERAGE SPEEDS IN MPH			
	MAIN ROUTE		SITE CAPA CITY	FLOW		AV.DEL PER VEH (MINS)	AVERAGE QUEUE (VEH)	MAIN ROUTE		SITE
	DEMAND FLOW	PCT HEAVY		MAIN ROUTE	'DIVER TED'			WITHOUT WORK ZONE	WITH WORK ZONE	
MID-1 AM	247	0.0	OFF	247	0	0.00	0	70.2	70.2	70.2
1-2 AM	153	0.0	OFF	153	0	0.00	0	70.2	70.2	70.2
2-3 AM	143	0.0	OFF	143	0	0.00	0	70.2	70.2	70.2
3-4 AM	176	0.0	OFF	176	0	0.00	0	70.2	70.2	70.2
4-5 AM	338	0.0	OFF	338	0	0.00	0	70.2	70.2	70.2
5-6 AM	1004	0.0	OFF	1004	0	0.00	0	69.5	69.5	69.5
6-7 AM	1810	0.0	OFF	1810	0	0.00	0	68.5	68.5	68.5
7-8 AM	2668	0.0	OFF	2668	0	0.00	0	67.4	67.4	67.4
8-9 AM	1923	0.0	OFF	1923	0	0.00	0	68.4	68.4	68.4
9-10 AM	1627	0.0	OFF	1627	0	0.00	0	68.7	68.7	68.7
10-11 AM	1740	0.0	1499	1740	0	4.49	109	68.6	17.8	30.8
11AM-NOON	1953	0.0	1500	1700	253	15.37+	378	68.3	7.6	30.8
NOON-1PM	2147	0.0	1499	1498	649	16.99+	416	68.1	7.2	30.8
1-2 PM	2384	0.0	1499	1498	886	16.99+	416	67.8	7.2	30.8
2-3 PM	2601	0.0	1499	1493	1108	17.03+	418	67.5	7.2	30.8
3-4 PM	2718	0.0	OFF	2718	0	0.29	27	67.4	56.9	56.9
4-5 PM	3138	0.0	OFF	3138	0	0.00	0	66.8	66.8	66.8
5-6 PM	2942	0.0	OFF	2942	0	0.00	0	67.1	67.1	67.1
6-7 PM	1927	0.0	OFF	1927	0	0.00	0	68.3	68.3	68.3
7-8 PM	1475	0.0	OFF	1475	0	0.00	0	68.9	68.9	68.9
8-9 PM	1412	0.0	OFF	1412	0	0.00	0	69.0	69.0	69.0
9-10 PM	1201	0.0	OFF	1201	0	0.00	0	69.2	69.2	69.2
10-11 PM	795	0.0	OFF	795	0	0.00	0	69.7	69.7	69.7
11PM-MID	495	0.0	OFF	495	0	0.00	0	70.1	70.1	70.1

"OFF" INDICATES NO ROAD WORK (ALL LANES OPEN TO TRAFFIC)

+ INDICATES QUEUEING EXCEEDS USER-SPECIFIED MAXIMUM LIMIT

----- SITE BREAKDOWN DELAYS -----	
BREAKDOWN DURATION (MINS)	0
RANGE OF QUEUE DELAY - MIN (VEH-H) MAX	0.0
AV BREAKDOWNS PER DAY	0.00
AV QUEUE DELAY/DAY (VEH-H)	0.0
AV TOTAL DELAY/DAY (VEH-H)	0.0

----- SITE ACCIDENT DELAYS -----	
BREAKDOWN DURATION (MINS)	0
RANGE OF QUEUE DELAY - MIN (VEH-H) MAX	0
AV BREAKDOWNS PER DAY	0
AV QUEUE DELAY/DAY (VEH-H)	0
AV TOTAL DELAY/DAY (VEH-H)	0

AVERAGE ACCIDENT NUMBERS (PIA/DAY)	
MAIN ROUTE WITHOUT WORKS	0.0106
MAIN ROUTE WITH WORKS	0.0093
'DIVERSION'	0.0019
<small>PIA: Personal Injury Accidents</small>	
IMPACTS ON ROAD USERS	
ROAD USER COSTS PER DAY	\$35,084
CONGESTED HOURS PER DAY*	4

*Delays Exceeding User-Specified Maximum

**USH 41: STH 15 TO STH 125 (OUTAGAMIE COUNTY)
OFF-PEAK DAY 2 LANE CLOSURE
NO DIVERSION ROUTE (MAX QUEUE METHOD)**

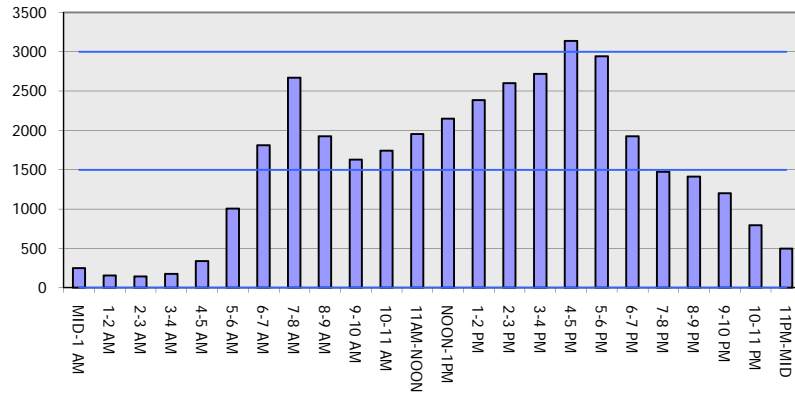
AUGUST

Analyzed for 2009
Construction Season

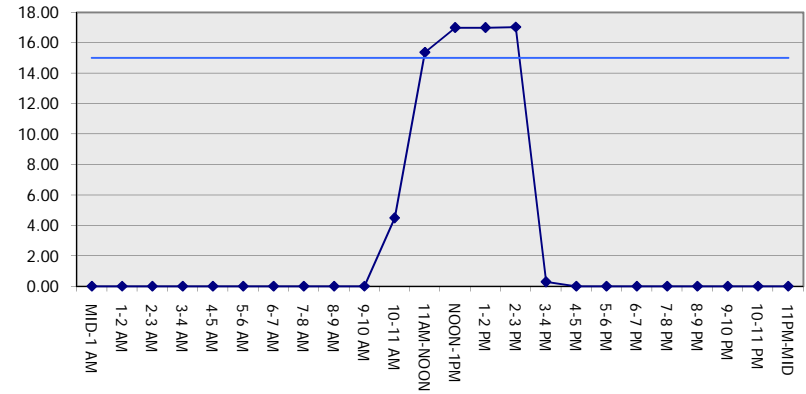
GRAPHICAL REPRESENTATION OF TRAFFIC MODEL INPUT AND OUTPUT

MON-THUR SOUTHBOUND DIRECTION

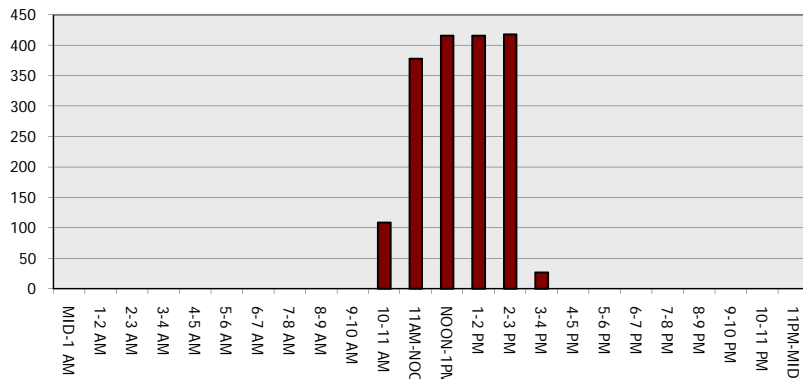
Main Route - Traffic Demand (Vehicles Per Hour)



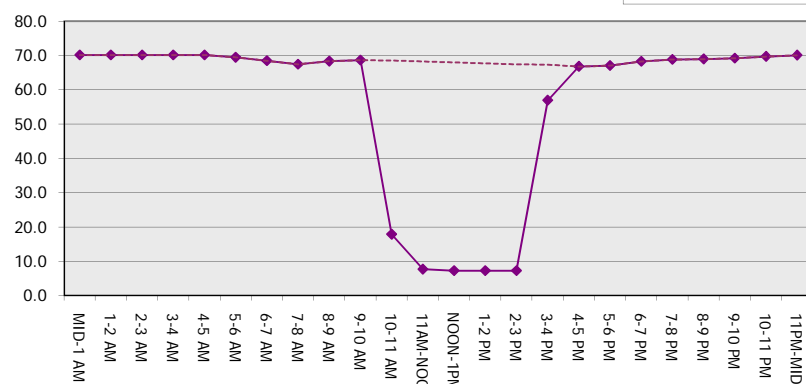
Main Route Average Delay Per Vehicle (Minutes)



Main Route - Average Queue Length (Vehicles)



Main Route - Average Speed (MPH)



USH 41: STH 15 TO STH 125 (OUTAGAMIE COUNTY) OFF-PEAK DAY 2 LANE CLOSURE NO DIVERSION ROUTE (MAX QUEUE METHOD)	AUGUST
	Analyzed for 2009 Construction Season

SUMMARY OF TRAFFIC MODEL OUTPUT

MON-THUR NORTHBOUND DIRECTION

TIME OF DAY	FLOWS AND CAPACITY IN VEH/HR						AVERAGE SPEEDS IN MPH			
	MAIN ROUTE		SITE CAPA CITY	FLOW		AV.DEL PER VEH (MINS)	AVERAGE QUEUE (VEH)	MAIN ROUTE		SITE
	DEMAND FLOW	PCT HEAVY		MAIN ROUTE	'DIVER TED'			WITHOUT WORK ZONE	WITH WORK ZONE	
MID-1 AM	199	0.0	OFF	199	0	0.00	0	70.2	70.2	70.2
1-2 AM	148	0.0	OFF	148	0	0.00	0	70.2	70.2	70.2
2-3 AM	132	0.0	OFF	132	0	0.00	0	70.2	70.2	70.2
3-4 AM	144	0.0	OFF	144	0	0.00	0	70.2	70.2	70.2
4-5 AM	312	0.0	OFF	312	0	0.00	0	70.2	70.2	70.2
5-6 AM	866	0.0	OFF	866	0	0.00	0	69.7	69.7	69.7
6-7 AM	1627	0.0	OFF	1627	0	0.00	0	68.7	68.7	68.7
7-8 AM	2565	0.0	OFF	2565	0	0.00	0	67.6	67.6	67.6
8-9 AM	2025	0.0	OFF	2025	0	0.00	0	68.2	68.2	68.2
9-10 AM	1833	0.0	OFF	1833	0	0.00	0	68.4	68.4	68.4
10-11 AM	1961	0.0	1499	1961	0	7.96	221	68.3	12.1	30.8
11AM-NOON	2137	0.0	1499	1496	641	16.99+	416	68.1	7.2	30.8
NOON-1PM	2174	0.0	1499	1496	678	16.99+	416	68.1	7.2	30.8
1-2 PM	2202	0.0	1499	1496	705	16.99+	416	68.0	7.2	30.8
2-3 PM	2382	0.0	1499	1496	886	17.00+	417	67.8	7.2	30.8
3-4 PM	2698	0.0	OFF	2698	0	0.31	30	67.4	56.4	56.4
4-5 PM	3194	0.0	OFF	3194	0	0.00	0	66.8	66.8	66.8
5-6 PM	2862	0.0	OFF	2862	0	0.00	0	67.2	67.2	67.2
6-7 PM	1927	0.0	OFF	1927	0	0.00	0	68.3	68.3	68.3
7-8 PM	1230	0.0	OFF	1230	0	0.00	0	69.2	69.2	69.2
8-9 PM	955	0.0	OFF	955	0	0.00	0	69.6	69.6	69.6
9-10 PM	725	0.0	OFF	725	0	0.00	0	69.9	69.9	69.9
10-11 PM	592	0.0	OFF	592	0	0.00	0	70.0	70.0	70.0
11PM-MID	382	0.0	OFF	382	0	0.00	0	70.2	70.2	70.2

"OFF" INDICATES NO ROAD WORK (ALL LANES OPEN TO TRAFFIC)

+ INDICATES QUEUEING EXCEEDS USER-SPECIFIED MAXIMUM LIMIT

----- SITE BREAKDOWN DELAYS -----	
BREAKDOWN DURATION (MINS)	0
RANGE OF QUEUE DELAY - MIN (VEH-H) MAX	0.0
AV BREAKDOWNS PER DAY	0.00
AV QUEUE DELAY/DAY (VEH-H)	0.0
AV TOTAL DELAY/DAY (VEH-H)	0.0

----- SITE ACCIDENT DELAYS -----	
BREAKDOWN DURATION (MINS)	0
RANGE OF QUEUE DELAY - MIN (VEH-H) MAX	0
AV BREAKDOWNS PER DAY	0
AV QUEUE DELAY/DAY (VEH-H)	0
AV TOTAL DELAY/DAY (VEH-H)	0

AVERAGE ACCIDENT NUMBERS (PIA/DAY)	
MAIN ROUTE WITHOUT WORKS	0.0101
MAIN ROUTE WITH WORKS	0.0088
'DIVERSION'	0.0019

PIA: Personal Injury Accidents

ECONOMIC IMPACT ON ROAD USERS	
ROAD USER COSTS PER DAY	\$36,774
CONGESTED HOURS PER DAY*	4

*Delays Exceeding User-Specified Maximum

**USH 41: STH 15 TO STH 125 (OUTAGAMIE COUNTY)
OFF-PEAK DAY 2 LANE CLOSURE
NO DIVERSION ROUTE (MAX QUEUE METHOD)**

AUGUST
Analyzed for 2009
Construction Season

GRAPHICAL REPRESENTATION OF TRAFFIC MODEL INPUT AND OUTPUT
MON-THUR NORTHBOUND DIRECTION

