

**USH 41: STH 441 TO STH 55 (OUTAGAMIE AND BROWN COUNTIES)
OFF-PEAK DAY CLOSURE
NO DIVERSION ROUTE (MAX QUEUE METHOD)**

OCTOBER
Analyzed for 2009
Construction Season

SUMMARY OF TRAFFIC MODEL OUTPUT
SUNDAY SOUTHBOUND DIRECTION

TIME OF DAY	FLOWS AND CAPACITY IN VEH/HR						AVERAGE SPEEDS IN MPH				
	MAIN ROUTE		SITE CAPA CITY	FLOW		AV.DEL PER VEH (MINS)	AVERAGE QUEUE (VEH)	MAIN ROUTE		SITE	
	DEMAND FLOW	PCT HEAVY		MAIN ROUTE	'DIVER TED'			WITHOUT WORK ZONE	WITH WORK ZONE		
MID-1 AM	424	0.0	OFF	424	0	0.00	0	65.6	65.6	65.6	
1-2 AM	225	0.0	OFF	225	0	0.00	0	66.0	66.0	66.0	
2-3 AM	208	0.0	OFF	208	0	0.00	0	66.0	66.0	66.0	
3-4 AM	126	0.0	OFF	126	0	0.00	0	66.1	66.1	66.1	
4-5 AM	131	0.0	OFF	131	0	0.00	0	66.1	66.1	66.1	
5-6 AM	194	0.0	OFF	194	0	0.00	0	66.0	66.0	66.0	
6-7 AM	269	0.0	OFF	269	0	0.00	0	65.9	65.9	65.9	
7-8 AM	316	0.0	OFF	316	0	0.00	0	65.8	65.8	65.8	
8-9 AM	597	0.0	OFF	597	0	0.00	0	65.3	65.3	65.3	
9-10 AM	896	0.0	1500	896	0	0.51	0	64.7	57.3	42.0	
10-11 AM	1278	0.0	1499	1278	0	0.74	0	64.0	53.9	36.2	
11AM-NOON	1504	0.0	1499	1504	0	1.22	6	63.6	48.6	31.2	
NOON-1PM	1656	0.0	1500	1656	0	4.41	98	63.3	30.0	30.8	
1-2 PM	1659	0.0	1499	1659	0	10.46	259	63.3	17.5	30.8	
2-3 PM	1702	0.0	1499	1575	127	15.50+	391	63.2	12.9	30.8	
3-4 PM	1746	0.0	1500	1500	246	15.82+	400	63.2	12.7	30.8	
4-5 PM	1707	0.0	1500	1500	207	15.83+	400	63.2	12.7	30.8	
5-6 PM	1488	0.0	1499	1445	43	15.34+	386	63.6	13.0	30.8	
6-7 PM	1269	0.0	1499	1269	0	10.36	264	64.0	17.6	31.4	
7-8 PM	890	0.0	OFF	890	0	0.06	2	64.7	63.8	63.8	
8-9 PM	596	0.0	OFF	596	0	0.00	0	65.3	65.3	65.3	
9-10 PM	547	0.0	OFF	547	0	0.00	0	65.4	65.4	65.4	
10-11 PM	633	0.0	OFF	633	0	0.00	0	65.2	65.2	65.2	
11PM-MID	2703	0.0	OFF	2703	0	0.00	0	58.8	58.8	58.8	

"OFF" INDICATES NO ROAD WORK (ALL LANES OPEN TO TRAFFIC)

+ INDICATES QUEUEING EXCEEDS USER-SPECIFIED MAXIMUM LIMIT

----- SITE BREAKDOWN DELAYS -----	
BREAKDOWN DURATION (MINS)	0
RANGE OF QUEUE DELAY - MIN (VEH-H) MAX	0.0
AV BREAKDOWNS PER DAY	0.00
AV QUEUE DELAY/DAY (VEH-H)	0.0
AV TOTAL DELAY/DAY (VEH-H)	0.0

----- SITE ACCIDENT DELAYS -----	
BREAKDOWN DURATION (MINS)	0
RANGE OF QUEUE DELAY - MIN (VEH-H) MAX	0
AV BREAKDOWNS PER DAY	0
AV QUEUE DELAY/DAY (VEH-H)	0
AV TOTAL DELAY/DAY (VEH-H)	0

AVERAGE ACCIDENT NUMBERS (PIA/DAY)	
MAIN ROUTE WITHOUT WORKS	0.0152
MAIN ROUTE WITH WORKS	0.0139
'DIVERSION'	0.0010
PIA: Personal Injury Accidents	
IMPACTS ON ROAD USERS	
ROAD USER COSTS PER DAY	\$40,901
CONGESTED HOURS PER DAY*	4

*Delays Exceeding User-Specified Maximum

USH 41: STH 441 TO STH 55 (OUTAGAMIE AND BROWN COUNTIES)
OFF-PEAK DAY CLOSURE
NO DIVERSION ROUTE (MAX QUEUE METHOD)

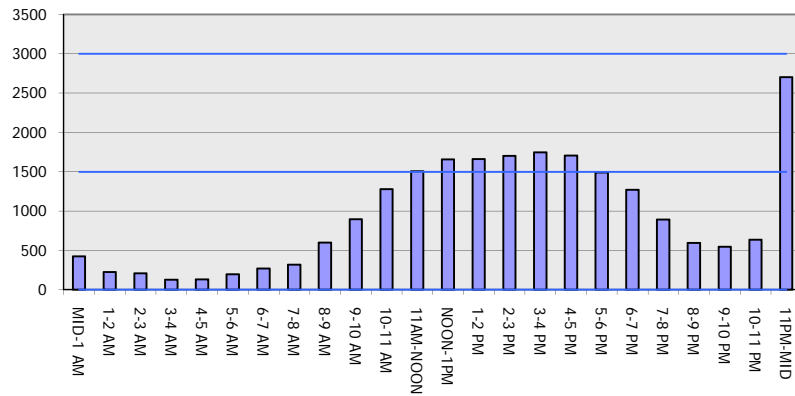
OCTOBER

Analyzed for 2009
 Construction Season

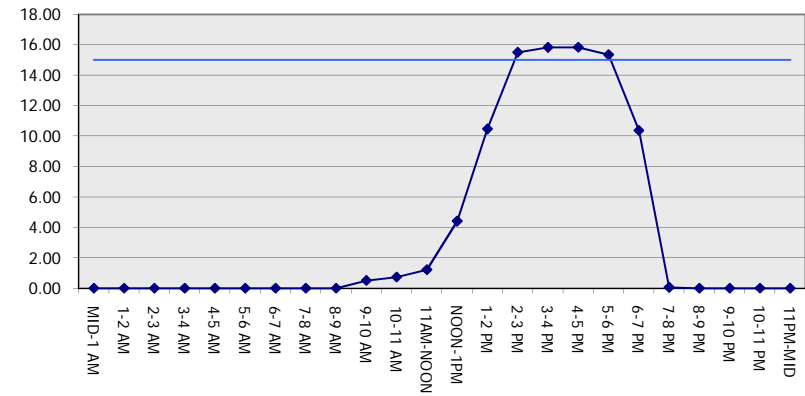
GRAPHICAL REPRESENTATION OF TRAFFIC MODEL INPUT AND OUTPUT

SUNDAY SOUTHBOUND DIRECTION

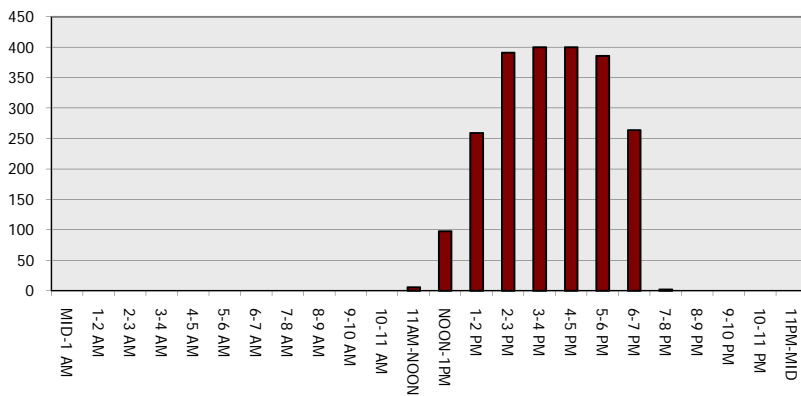
Main Route - Traffic Demand (Vehicles Per Hour)



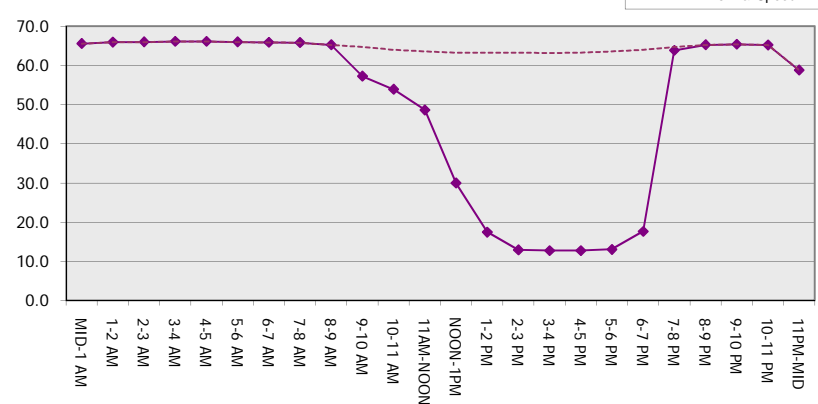
Main Route Average Delay Per Vehicle (Minutes)



Main Route - Average Queue Length (Vehicles)



Main Route - Average Speed (MPH)



USH 41: STH 441 TO STH 55 (OUTAGAMIE AND BROWN COUNTIES) OFF-PEAK DAY CLOSURE NO DIVERSION ROUTE (MAX QUEUE METHOD)	OCTOBER
	Analyzed for 2009 Construction Season

SUMMARY OF TRAFFIC MODEL OUTPUT

SUNDAY NORTHBOUND DIRECTION

TIME OF DAY	FLOWS AND CAPACITY IN VEH/HR						AVERAGE SPEEDS IN MPH			
	MAIN ROUTE		SITE CAPA CITY	FLOW		AV.DEL PER VEH (MINS)	AVERAGE QUEUE (VEH)	MAIN ROUTE		SITE
	DEMAND FLOW	PCT HEAVY		MAIN ROUTE	'DIVER TED'			WITHOUT WORK ZONE	WITH WORK ZONE	
MID-1 AM	327	0.0	OFF	327	0	0.00	0	65.8	65.8	65.8
1-2 AM	215	0.0	OFF	215	0	0.00	0	66.0	66.0	66.0
2-3 AM	224	0.0	OFF	224	0	0.00	0	66.0	66.0	66.0
3-4 AM	134	0.0	OFF	134	0	0.00	0	66.1	66.1	66.1
4-5 AM	109	0.0	OFF	109	0	0.00	0	66.2	66.2	66.2
5-6 AM	151	0.0	OFF	151	0	0.00	0	66.1	66.1	66.1
6-7 AM	214	0.0	OFF	214	0	0.00	0	66.0	66.0	66.0
7-8 AM	310	0.0	OFF	310	0	0.00	0	65.8	65.8	65.8
8-9 AM	552	0.0	OFF	552	0	0.00	0	65.3	65.3	65.3
9-10 AM	758	0.0	1500	758	0	0.50	0	65.0	57.6	42.5
10-11 AM	1116	0.0	1499	1116	0	0.58	0	64.3	56.0	39.9
11AM-NOON	1499	0.0	1499	1499	0	1.29	9	63.6	47.9	31.7
NOON-1PM	1744	0.0	1500	1744	0	5.87	145	63.2	25.6	30.8
1-2 PM	1969	0.0	1500	1670	300	15.12+	384	62.7	13.2	30.8
2-3 PM	2697	0.0	1500	1500	1197	15.54+	400	58.9	12.7	30.8
3-4 PM	3383	0.0	1500	1500	1883	14.95+	400	51.9	12.7	30.8
4-5 PM	3274	0.0	1500	1500	1774	15.06+	400	53.0	12.7	30.8
5-6 PM	2166	0.0	1500	1476	689	15.69+	397	62.3	12.8	30.8
6-7 PM	1179	0.0	1499	1165	14	11.02+	298	64.2	16.8	33.3
7-8 PM	793	0.0	OFF	793	0	0.03	1	64.9	64.4	64.4
8-9 PM	494	0.0	OFF	494	0	0.00	0	65.5	65.5	65.5
9-10 PM	443	0.0	OFF	443	0	0.00	0	65.6	65.6	65.6
10-11 PM	300	0.0	OFF	300	0	0.00	0	65.8	65.8	65.8
11PM-MID	269	0.0	OFF	269	0	0.00	0	65.9	65.9	65.9

"OFF" INDICATES NO ROAD WORK (ALL LANES OPEN TO TRAFFIC)

+ INDICATES QUEUEING EXCEEDS USER-SPECIFIED MAXIMUM LIMIT

----- SITE BREAKDOWN DELAYS -----	
BREAKDOWN DURATION (MINS)	0
RANGE OF QUEUE DELAY - MIN (VEH-H) MAX	0.0
AV BREAKDOWNS PER DAY	0.00
AV QUEUE DELAY/DAY (VEH-H)	0.0
AV TOTAL DELAY/DAY (VEH-H)	0.0

----- SITE ACCIDENT DELAYS -----	
BREAKDOWN DURATION (MINS)	0
RANGE OF QUEUE DELAY - MIN (VEH-H) MAX	0
AV BREAKDOWNS PER DAY	0
AV QUEUE DELAY/DAY (VEH-H)	0
AV TOTAL DELAY/DAY (VEH-H)	0

AVERAGE ACCIDENT NUMBERS (PIA/DAY)	
MAIN ROUTE WITHOUT WORKS	0.0163
MAIN ROUTE WITH WORKS	0.0114
'DIVERSION'	0.0091

PIA: Personal Injury Accidents

ECONOMIC IMPACT ON ROAD USERS	
ROAD USER COSTS PER DAY	\$65,401
CONGESTED HOURS PER DAY*	6

*Delays Exceeding User-Specified Maximum

**USH 41: STH 441 TO STH 55 (OUTAGAMIE AND BROWN COUNTIES)
OFF-PEAK DAY CLOSURE
NO DIVERSION ROUTE (MAX QUEUE METHOD)**

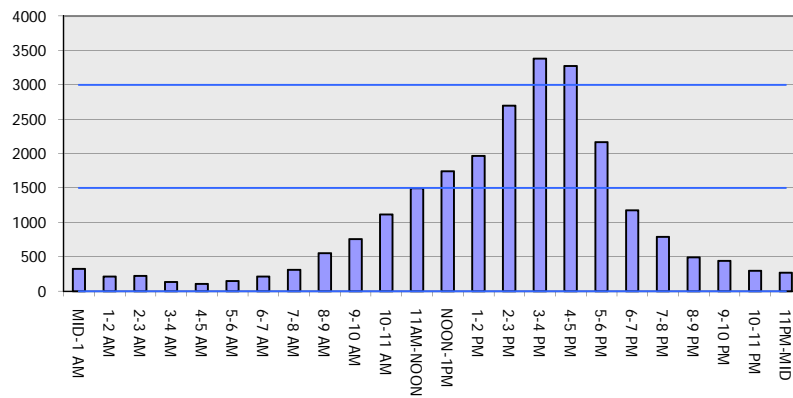
OCTOBER

Analyzed for 2009
Construction Season

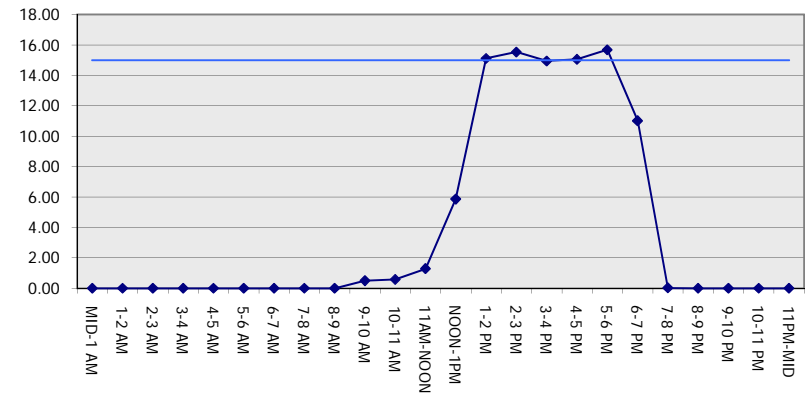
GRAPHICAL REPRESENTATION OF TRAFFIC MODEL INPUT AND OUTPUT

SUNDAY NORTHBOUND DIRECTION

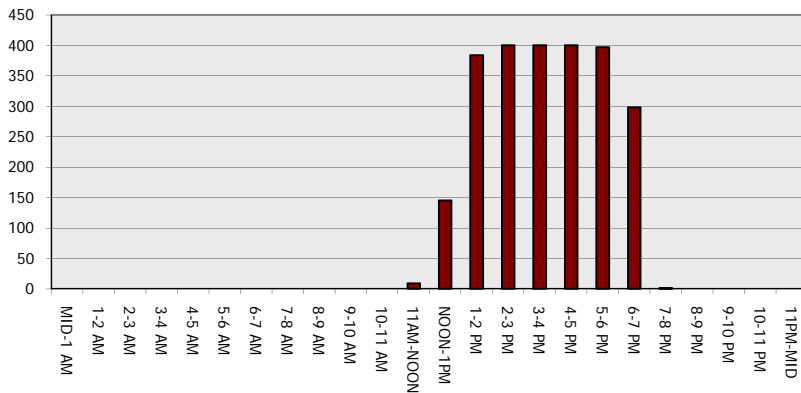
Main Route - Traffic Demand (Vehicles Per Hour)



Main Route Average Delay Per Vehicle (Minutes)



Main Route - Average Queue Length (Vehicles)



Main Route - Average Speed (MPH)

