

USH 41: STH 441 TO STH 55 (OUTAGAMIE AND BROWN COUNTIES) OFF-PEAK DAY CLOSURE NO DIVERSION ROUTE (MAX QUEUE METHOD)	OCTOBER
	Analyzed for 2009 Construction Season

SUMMARY OF TRAFFIC MODEL OUTPUT

SATURDAY SOUTHBOUND DIRECTION

TIME OF DAY	FLOWS AND CAPACITY IN VEH/HR						AVERAGE SPEEDS IN MPH			
	MAIN ROUTE		SITE CAPA CITY	FLOW		AV.DEL PER VEH (MINS)	AVERAGE QUEUE (VEH)	MAIN ROUTE		SITE
	DEMAND FLOW	PCT HEAVY		MAIN ROUTE	'DIVER TED'			WITHOUT WORK ZONE	WITH WORK ZONE	
MID-1 AM	365	0.0	OFF	365	0	0.00	0	65.7	65.7	65.7
1-2 AM	209	0.0	OFF	209	0	0.00	0	66.0	66.0	66.0
2-3 AM	166	0.0	OFF	166	0	0.00	0	66.1	66.1	66.1
3-4 AM	145	0.0	OFF	145	0	0.00	0	66.1	66.1	66.1
4-5 AM	223	0.0	OFF	223	0	0.00	0	66.0	66.0	66.0
5-6 AM	321	0.0	OFF	321	0	0.00	0	65.8	65.8	65.8
6-7 AM	543	0.0	OFF	543	0	0.00	0	65.4	65.4	65.4
7-8 AM	737	0.0	OFF	737	0	0.00	0	65.0	65.0	65.0
8-9 AM	1082	0.0	1500	1082	0	0.53	0	64.4	56.8	41.4
9-10 AM	1263	0.0	1499	1263	0	0.72	0	64.0	54.2	36.6
10-11 AM	1527	0.0	1499	1527	0	1.28	7	63.5	48.0	30.9
11AM-NOON	1540	0.0	1499	1540	0	2.77	47	63.5	37.4	30.8
NOON-1PM	1610	0.0	1500	1610	0	5.52	124	63.4	26.5	30.8
1-2 PM	1560	0.0	1499	1560	0	8.93	214	63.5	19.6	30.8
2-3 PM	1496	0.0	1499	1496	0	10.03	242	63.6	18.0	30.8
3-4 PM	1423	0.0	1499	1423	0	8.35	198	63.7	20.5	30.8
4-5 PM	1464	0.0	1500	1464	0	6.26	141	63.7	24.7	30.8
5-6 PM	1399	0.0	1499	1399	0	3.70	76	63.8	33.0	31.2
6-7 PM	1334	0.0	OFF	1334	0	0.00	0	63.9	63.8	63.8
7-8 PM	1042	0.0	OFF	1042	0	0.00	0	64.5	64.5	64.5
8-9 PM	930	0.0	OFF	930	0	0.00	0	64.6	64.6	64.6
9-10 PM	889	0.0	OFF	889	0	0.00	0	64.7	64.7	64.7
10-11 PM	749	0.0	OFF	749	0	0.00	0	65.0	65.0	65.0
11PM-MID	634	0.0	OFF	634	0	0.00	0	65.2	65.2	65.2

"OFF" INDICATES NO ROAD WORK (ALL LANES OPEN TO TRAFFIC)

----- SITE BREAKDOWN DELAYS -----	
BREAKDOWN DURATION (MINS)	0
RANGE OF QUEUE DELAY - MIN (VEH-H) MAX	0.0
AV BREAKDOWNS PER DAY	0.00
AV QUEUE DELAY/DAY (VEH-H)	0.0
AV TOTAL DELAY/DAY (VEH-H)	0.0

----- SITE ACCIDENT DELAYS -----	
BREAKDOWN DURATION (MINS)	0
RANGE OF QUEUE DELAY - MIN (VEH-H) MAX	0
AV BREAKDOWNS PER DAY	0
AV QUEUE DELAY/DAY (VEH-H)	0
AV TOTAL DELAY/DAY (VEH-H)	0

AVERAGE ACCIDENT NUMBERS (PIA/DAY)	
MAIN ROUTE WITHOUT WORKS	0.0151
MAIN ROUTE WITH WORKS	0.0142
'DIVERSION'	0.0000
PIA: Personal Injury Accidents	
IMPACTS ON ROAD USERS	
ROAD USER COSTS PER DAY	\$19,543
CONGESTED HOURS PER DAY*	0

*Delays Exceeding User-Specified Maximum

USH 41: STH 441 TO STH 55 (OUTAGAMIE AND BROWN COUNTIES)
OFF-PEAK DAY CLOSURE
NO DIVERSION ROUTE (MAX QUEUE METHOD)

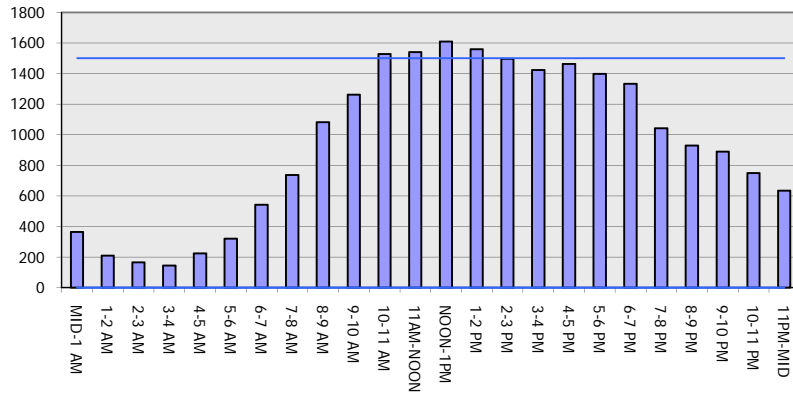
OCTOBER

Analyzed for 2009
 Construction Season

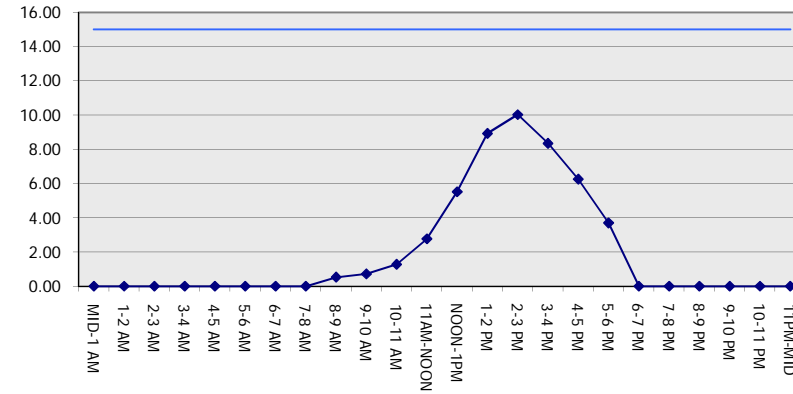
GRAPHICAL REPRESENTATION OF TRAFFIC MODEL INPUT AND OUTPUT

SATURDAY SOUTHBOUND DIRECTION

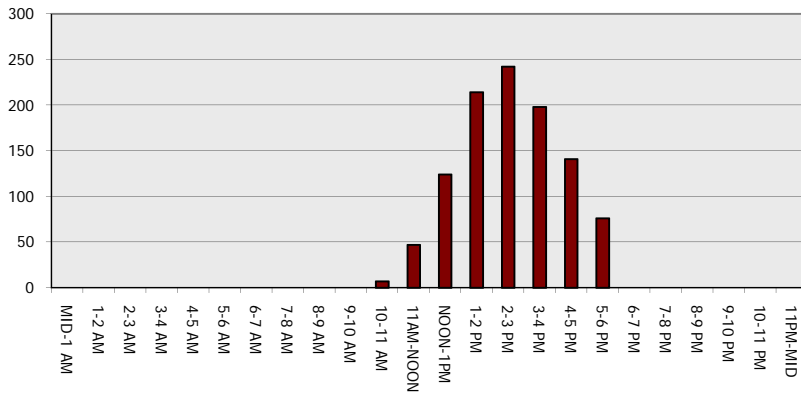
Main Route - Traffic Demand (Vehicles Per Hour)



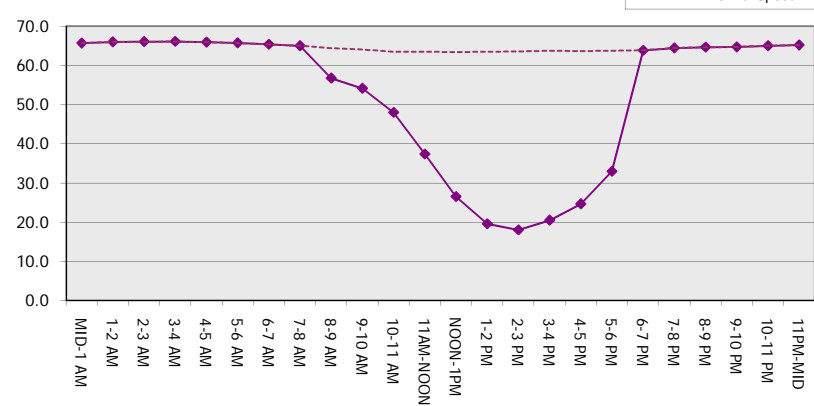
Main Route Average Delay Per Vehicle (Minutes)



Main Route - Average Queue Length (Vehicles)



Main Route - Average Speed (MPH)



USH 41: STH 441 TO STH 55 (OUTAGAMIE AND BROWN COUNTIES) OFF-PEAK DAY CLOSURE NO DIVERSION ROUTE (MAX QUEUE METHOD)	OCTOBER
	Analyzed for 2009 Construction Season

SUMMARY OF TRAFFIC MODEL OUTPUT

SATURDAY NORTHBOUND DIRECTION

TIME OF DAY	FLOWS AND CAPACITY IN VEH/HR						AVERAGE SPEEDS IN MPH			
	MAIN ROUTE		SITE CAPA CITY	FLOW		AV.DEL PER VEH (MINS)	AVERAGE QUEUE (VEH)	MAIN ROUTE		SITE
	DEMAND FLOW	PCT HEAVY		MAIN ROUTE	'DIVER TED'			WITHOUT WORK ZONE	WITH WORK ZONE	
MID-1 AM	275	0.0	OFF	275	0	0.00	0	65.9	65.9	65.9
1-2 AM	168	0.0	OFF	168	0	0.00	0	66.1	66.1	66.1
2-3 AM	172	0.0	OFF	172	0	0.00	0	66.1	66.1	66.1
3-4 AM	119	0.0	OFF	119	0	0.00	0	66.1	66.1	66.1
4-5 AM	182	0.0	OFF	182	0	0.00	0	66.1	66.1	66.1
5-6 AM	275	0.0	OFF	275	0	0.00	0	65.9	65.9	65.9
6-7 AM	471	0.0	OFF	471	0	0.00	0	65.5	65.5	65.5
7-8 AM	772	0.0	OFF	772	0	0.00	0	65.0	65.0	65.0
8-9 AM	1213	0.0	1500	1213	0	0.65	0	64.1	55.0	38.1
9-10 AM	1388	0.0	1499	1388	0	0.88	0	63.8	52.2	33.3
10-11 AM	1557	0.0	1499	1557	0	1.63	17	63.5	45.0	30.8
11AM-NOON	1739	0.0	1500	1739	0	6.83	170	63.2	23.3	30.8
NOON-1PM	1764	0.0	1500	1621	143	15.05+	380	63.1	13.2	30.8
1-2 PM	1624	0.0	1499	1491	133	15.80+	398	63.3	12.7	30.8
2-3 PM	1598	0.0	1499	1500	98	15.84+	399	63.4	12.7	30.8
3-4 PM	1609	0.0	1500	1500	109	15.84+	400	63.4	12.7	30.8
4-5 PM	1714	0.0	1500	1500	214	15.83+	400	63.2	12.7	30.8
5-6 PM	1572	0.0	1500	1485	87	15.78+	398	63.5	12.7	30.8
6-7 PM	1165	0.0	OFF	1165	0	0.45	27	64.2	57.6	57.6
7-8 PM	1145	0.0	OFF	1145	0	0.00	0	64.3	64.3	64.3
8-9 PM	1044	0.0	OFF	1044	0	0.00	0	64.5	64.5	64.5
9-10 PM	813	0.0	OFF	813	0	0.00	0	64.9	64.9	64.9
10-11 PM	576	0.0	OFF	576	0	0.00	0	65.3	65.3	65.3
11PM-MID	400	0.0	OFF	400	0	0.00	0	65.6	65.6	65.6

"OFF" INDICATES NO ROAD WORK (ALL LANES OPEN TO TRAFFIC)

+ INDICATES QUEUEING EXCEEDS USER-SPECIFIED MAXIMUM LIMIT

----- SITE BREAKDOWN DELAYS -----	
BREAKDOWN DURATION (MINS)	0
RANGE OF QUEUE DELAY - MIN (VEH-H) MAX	0.0
AV BREAKDOWNS PER DAY	0.00
AV QUEUE DELAY/DAY (VEH-H)	0.0
AV TOTAL DELAY/DAY (VEH-H)	0.0

----- SITE ACCIDENT DELAYS -----	
BREAKDOWN DURATION (MINS)	0
RANGE OF QUEUE DELAY - MIN (VEH-H) MAX	0
AV BREAKDOWNS PER DAY	0
AV QUEUE DELAY/DAY (VEH-H)	0
AV TOTAL DELAY/DAY (VEH-H)	0

AVERAGE ACCIDENT NUMBERS (PIA/DAY)	
MAIN ROUTE WITHOUT WORKS	0.0156
MAIN ROUTE WITH WORKS	0.0141
'DIVERSION'	0.0012

PIA: Personal Injury Accidents

ECONOMIC IMPACT ON ROAD USERS	
ROAD USER COSTS PER DAY	\$46,822
CONGESTED HOURS PER DAY*	6

*Delays Exceeding User-Specified Maximum

**USH 41: STH 441 TO STH 55 (OUTAGAMIE AND BROWN COUNTIES)
OFF-PEAK DAY CLOSURE
NO DIVERSION ROUTE (MAX QUEUE METHOD)**

OCTOBER

Analyzed for 2009
Construction Season

**GRAPHICAL REPRESENTATION OF TRAFFIC MODEL INPUT AND OUTPUT
SATURDAY NORTHBOUND DIRECTION**

