

**USH 41: STH 441 TO STH 55 (OUTAGAMIE AND BROWN COUNTIES)
OFF-PEAK DAY CLOSURE
NO DIVERSION ROUTE (MAX QUEUE METHOD)**

OCTOBER
Analyzed for 2009
Construction Season

SUMMARY OF TRAFFIC MODEL OUTPUT
FRIDAY SOUTHBOUND DIRECTION

TIME OF DAY	FLOWS AND CAPACITY IN VEH/HR						AVERAGE SPEEDS IN MPH				
	MAIN ROUTE		SITE CAPA CITY	FLOW		AV.DEL PER VEH (MINS)	AVERAGE QUEUE (VEH)	MAIN ROUTE		SITE	
	DEMAND FLOW	PCT HEAVY		MAIN ROUTE	'DIVER TED'			WITHOUT WORK ZONE	WITH WORK ZONE		
MID-1 AM	187	0.0	OFF	187	0	0.00	0	66.0	66.0	66.0	
1-2 AM	149	0.0	OFF	149	0	0.00	0	66.1	66.1	66.1	
2-3 AM	131	0.0	OFF	131	0	0.00	0	66.1	66.1	66.1	
3-4 AM	150	0.0	OFF	150	0	0.00	0	66.1	66.1	66.1	
4-5 AM	371	0.0	OFF	371	0	0.00	0	65.7	65.7	65.7	
5-6 AM	813	0.0	OFF	813	0	0.00	0	64.9	64.9	64.9	
6-7 AM	1707	0.0	OFF	1707	0	0.00	0	63.2	63.2	63.2	
7-8 AM	2689	0.0	OFF	2689	0	0.00	0	58.9	58.9	58.9	
8-9 AM	1814	0.0	OFF	1814	0	0.00	0	63.0	63.0	63.0	
9-10 AM	1546	0.0	OFF	1546	0	0.00	0	63.5	63.5	63.5	
10-11 AM	1630	0.0	1499	1630	0	2.93	57	63.3	36.5	30.8	
11AM-NOON	1795	0.0	1500	1795	0	10.46+	271	63.0	17.5	30.8	
NOON-1PM	1847	0.0	1499	1500	347	15.81+	399	63.0	12.7	30.8	
1-2 PM	1828	0.0	1500	1500	328	15.81+	400	63.0	12.7	30.8	
2-3 PM	2099	0.0	1500	1500	599	15.78+	400	62.5	12.7	30.8	
3-4 PM	2423	0.0	OFF	2423	0	1.17	57	61.7	47.9	47.9	
4-5 PM	2625	0.0	OFF	2625	0	0.00	0	59.6	59.6	59.6	
5-6 PM	2527	0.0	OFF	2527	0	0.00	0	60.6	60.6	60.6	
6-7 PM	1578	0.0	OFF	1578	0	0.00	0	63.5	63.5	63.5	
7-8 PM	950	0.0	OFF	950	0	0.00	0	64.6	64.6	64.6	
8-9 PM	792	0.0	OFF	792	0	0.00	0	64.9	64.9	64.9	
9-10 PM	816	0.0	OFF	816	0	0.00	0	64.9	64.9	64.9	
10-11 PM	680	0.0	OFF	680	0	0.00	0	65.1	65.1	65.1	
11PM-MID	466	0.0	OFF	466	0	0.00	0	65.5	65.5	65.5	

"OFF" INDICATES NO ROAD WORK (ALL LANES OPEN TO TRAFFIC)

+ INDICATES QUEUEING EXCEEDS USER-SPECIFIED MAXIMUM LIMIT

----- SITE BREAKDOWN DELAYS -----	
BREAKDOWN DURATION (MINS)	0
RANGE OF QUEUE DELAY - MIN (VEH-H) MAX	0.0
AV BREAKDOWNS PER DAY	0.00
AV QUEUE DELAY/DAY (VEH-H)	0.0
AV TOTAL DELAY/DAY (VEH-H)	0.0

----- SITE ACCIDENT DELAYS -----	
BREAKDOWN DURATION (MINS)	0
RANGE OF QUEUE DELAY - MIN (VEH-H) MAX	0
AV BREAKDOWNS PER DAY	0
AV QUEUE DELAY/DAY (VEH-H)	0
AV TOTAL DELAY/DAY (VEH-H)	0

AVERAGE ACCIDENT NUMBERS (PIA/DAY)	
MAIN ROUTE WITHOUT WORKS	0.0211
MAIN ROUTE WITH WORKS	0.0198
'DIVERSION'	0.0020
PIA: Personal Injury Accidents	
IMPACTS ON ROAD USERS	
ROAD USER COSTS PER DAY	\$25,399
CONGESTED HOURS PER DAY*	4

*Delays Exceeding User-Specified Maximum

**USH 41: STH 441 TO STH 55 (OUTAGAMIE AND BROWN COUNTIES)
OFF-PEAK DAY CLOSURE
NO DIVERSION ROUTE (MAX QUEUE METHOD)**

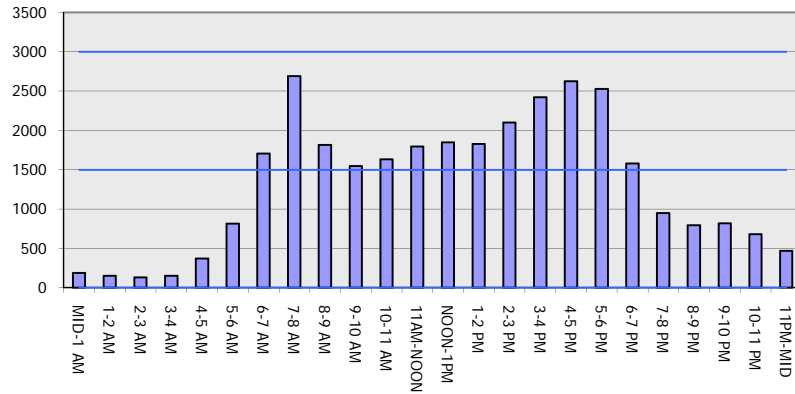
OCTOBER

Analyzed for 2009
Construction Season

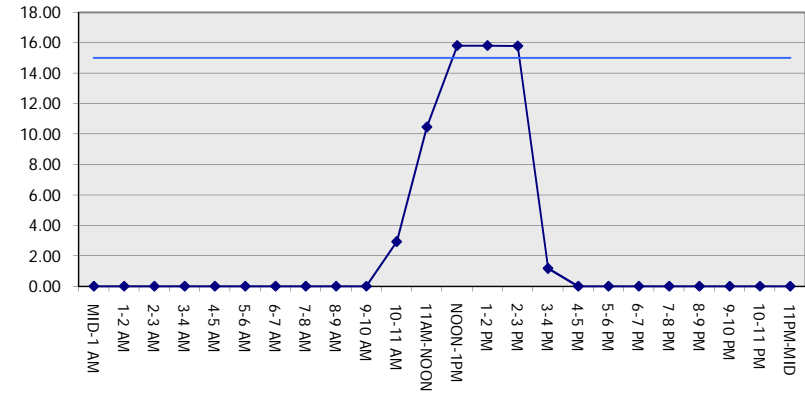
GRAPHICAL REPRESENTATION OF TRAFFIC MODEL INPUT AND OUTPUT

FRIDAY SOUTHBOUND DIRECTION

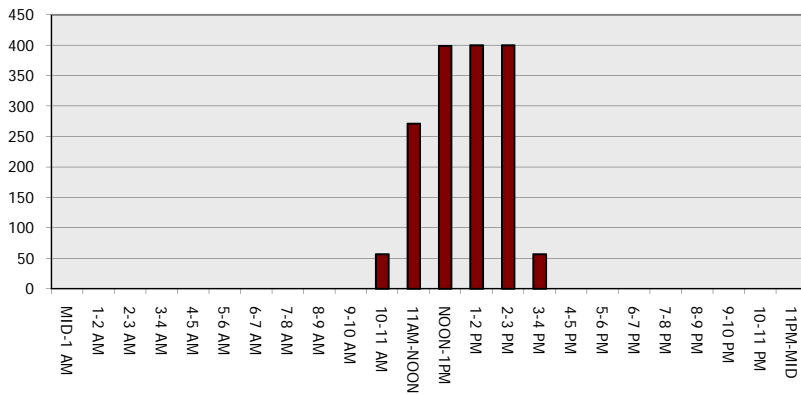
Main Route - Traffic Demand (Vehicles Per Hour)



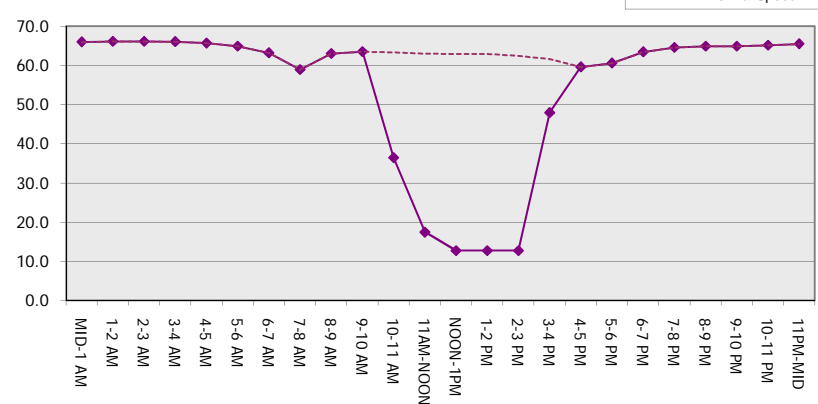
Main Route Average Delay Per Vehicle (Minutes)



Main Route - Average Queue Length (Vehicles)



Main Route - Average Speed (MPH)



USH 41: STH 441 TO STH 55 (OUTAGAMIE AND BROWN COUNTIES) OFF-PEAK DAY CLOSURE NO DIVERSION ROUTE (MAX QUEUE METHOD)	OCTOBER
	Analyzed for 2009 Construction Season

SUMMARY OF TRAFFIC MODEL OUTPUT

FRIDAY NORTHBOUND DIRECTION

TIME OF DAY	FLOWS AND CAPACITY IN VEH/HR						AVERAGE SPEEDS IN MPH			
	MAIN ROUTE		SITE CAPA CITY	FLOW		AV.DEL PER VEH (MINS)	AVERAGE QUEUE (VEH)	MAIN ROUTE		SITE
	DEMAND FLOW	PCT HEAVY		MAIN ROUTE	'DIVER TED'			WITHOUT WORK ZONE	WITH WORK ZONE	
MID-1 AM	216	0.0	OFF	216	0	0.00	0	66.0	66.0	66.0
1-2 AM	137	0.0	OFF	137	0	0.00	0	66.1	66.1	66.1
2-3 AM	154	0.0	OFF	154	0	0.00	0	66.1	66.1	66.1
3-4 AM	124	0.0	OFF	124	0	0.00	0	66.1	66.1	66.1
4-5 AM	284	0.0	OFF	284	0	0.00	0	65.8	65.8	65.8
5-6 AM	759	0.0	OFF	759	0	0.00	0	65.0	65.0	65.0
6-7 AM	1516	0.0	OFF	1516	0	0.00	0	63.6	63.6	63.6
7-8 AM	2468	0.0	OFF	2468	0	0.00	0	61.2	61.2	61.2
8-9 AM	1743	0.0	OFF	1743	0	0.00	0	63.2	63.2	63.2
9-10 AM	1547	0.0	OFF	1547	0	0.00	0	63.5	63.5	63.5
10-11 AM	1760	0.0	1499	1760	0	4.87	121	63.1	28.4	30.8
11AM-NOON	1825	0.0	1499	1640	185	14.39+	365	63.0	13.7	30.8
NOON-1PM	2112	0.0	1500	1500	612	15.78+	400	62.5	12.7	30.8
1-2 PM	2176	0.0	1500	1500	676	15.77+	400	62.3	12.7	30.8
2-3 PM	2433	0.0	1500	1500	933	15.72+	400	61.5	12.7	30.8
3-4 PM	2759	0.0	OFF	2759	0	1.30	64	58.2	44.8	44.8
4-5 PM	2989	0.0	OFF	2989	0	0.00	0	55.9	55.9	55.9
5-6 PM	2813	0.0	OFF	2813	0	0.00	0	57.7	57.7	57.7
6-7 PM	2021	0.0	OFF	2021	0	0.00	0	62.6	62.6	62.6
7-8 PM	1452	0.0	OFF	1452	0	0.00	0	63.7	63.7	63.7
8-9 PM	1116	0.0	OFF	1116	0	0.00	0	64.3	64.3	64.3
9-10 PM	997	0.0	OFF	997	0	0.00	0	64.5	64.5	64.5
10-11 PM	696	0.0	OFF	696	0	0.00	0	65.1	65.1	65.1
11PM-MID	440	0.0	OFF	440	0	0.00	0	65.6	65.6	65.6

"OFF" INDICATES NO ROAD WORK (ALL LANES OPEN TO TRAFFIC)

+ INDICATES QUEUEING EXCEEDS USER-SPECIFIED MAXIMUM LIMIT

----- SITE BREAKDOWN DELAYS -----	
BREAKDOWN DURATION (MINS)	0
RANGE OF QUEUE DELAY - MIN (VEH-H) MAX	0.0
AV BREAKDOWNS PER DAY	0.00
AV QUEUE DELAY/DAY (VEH-H)	0.0
AV TOTAL DELAY/DAY (VEH-H)	0.0

----- SITE ACCIDENT DELAYS -----	
BREAKDOWN DURATION (MINS)	0
RANGE OF QUEUE DELAY - MIN (VEH-H) MAX	0
AV BREAKDOWNS PER DAY	0
AV QUEUE DELAY/DAY (VEH-H)	0
AV TOTAL DELAY/DAY (VEH-H)	0

AVERAGE ACCIDENT NUMBERS (PIA/DAY)	
MAIN ROUTE WITHOUT WORKS	0.0231
MAIN ROUTE WITH WORKS	0.0210
'DIVERSION'	0.0037

PIA: Personal Injury Accidents

ECONOMIC IMPACT ON ROAD USERS	
ROAD USER COSTS PER DAY	\$31,165
CONGESTED HOURS PER DAY*	4

*Delays Exceeding User-Specified Maximum

**USH 41: STH 441 TO STH 55 (OUTAGAMIE AND BROWN COUNTIES)
OFF-PEAK DAY CLOSURE
NO DIVERSION ROUTE (MAX QUEUE METHOD)**

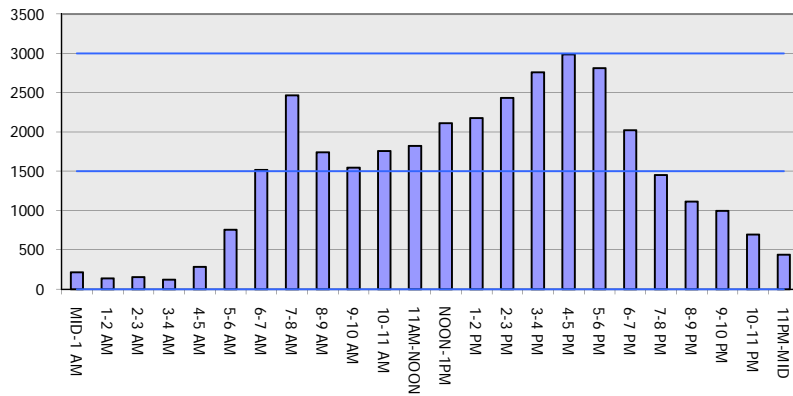
OCTOBER

Analyzed for 2009
Construction Season

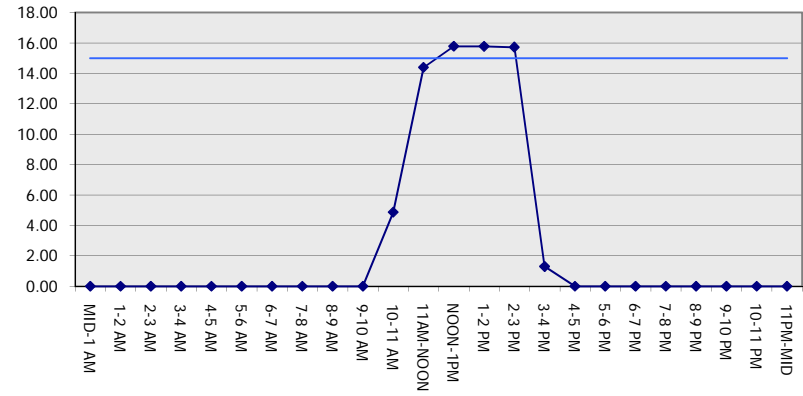
GRAPHICAL REPRESENTATION OF TRAFFIC MODEL INPUT AND OUTPUT

FRIDAY NORTHBOUND DIRECTION

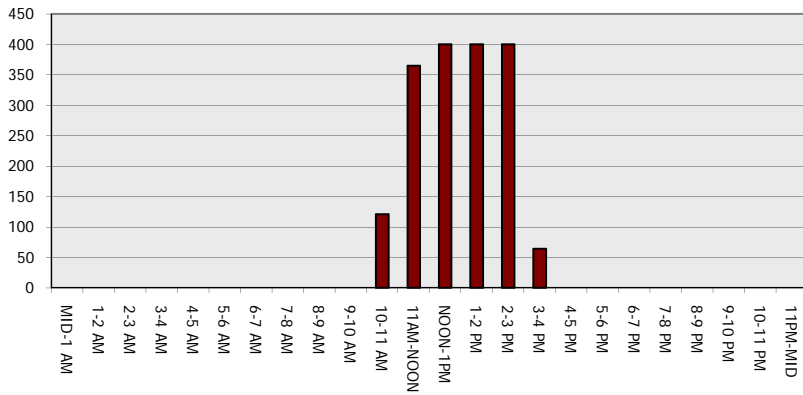
Main Route - Traffic Demand (Vehicles Per Hour)



Main Route Average Delay Per Vehicle (Minutes)



Main Route - Average Queue Length (Vehicles)



Main Route - Average Speed (MPH)

