

USH 41: STH 441 TO STH 55 (OUTAGAMIE AND BROWN COUNTIES) OFF-PEAK DAY CLOSURE NO DIVERSION ROUTE (MAX QUEUE METHOD)	AUGUST
	Analyzed for 2009 Construction Season

SUMMARY OF TRAFFIC MODEL OUTPUT

MON-THUR SOUTHBOUND DIRECTION

TIME OF DAY	FLOWS AND CAPACITY IN VEH/HR						AVERAGE SPEEDS IN MPH				
	MAIN ROUTE		SITE CAPA CITY	FLOW		AV.DEL PER VEH (MINS)	AVERAGE QUEUE (VEH)	MAIN ROUTE		SITE	
	DEMAND FLOW	PCT HEAVY		MAIN ROUTE	'DIVER TED'			WITHOUT WORK ZONE	WITH WORK ZONE		
MID-1 AM	214	0.0	OFF	214	0	0.00	0	66.0	66.0	66.0	
1-2 AM	136	0.0	OFF	136	0	0.00	0	66.1	66.1	66.1	
2-3 AM	115	0.0	OFF	115	0	0.00	0	66.2	66.2	66.2	
3-4 AM	175	0.0	OFF	175	0	0.00	0	66.1	66.1	66.1	
4-5 AM	366	0.0	OFF	366	0	0.00	0	65.7	65.7	65.7	
5-6 AM	1016	0.0	OFF	1016	0	0.00	0	64.5	64.5	64.5	
6-7 AM	1941	0.0	OFF	1941	0	0.00	0	62.8	62.8	62.8	
7-8 AM	2719	0.0	OFF	2719	0	0.00	0	58.6	58.6	58.6	
8-9 AM	1853	0.0	OFF	1853	0	0.00	0	62.9	62.9	62.9	
9-10 AM	1557	0.0	OFF	1557	0	0.00	0	63.5	63.5	63.5	
10-11 AM	1606	0.0	1499	1606	0	2.72	49	63.4	37.6	30.8	
11AM-NOON	1655	0.0	1500	1655	0	7.40	177	63.3	22.2	30.8	
NOON-1PM	1786	0.0	1500	1630	156	14.30+	363	63.0	13.8	30.8	
1-2 PM	1860	0.0	1500	1500	360	15.81+	400	62.9	12.7	30.8	
2-3 PM	1928	0.0	1500	1500	428	15.80+	400	62.8	12.7	30.8	
3-4 PM	2149	0.0	OFF	2149	0	0.75	41	62.4	52.7	52.7	
4-5 PM	2580	0.0	OFF	2580	0	0.00	0	60.1	60.1	60.1	
5-6 PM	2573	0.0	OFF	2573	0	0.00	0	60.1	60.1	60.1	
6-7 PM	1566	0.0	OFF	1566	0	0.00	0	63.5	63.5	63.5	
7-8 PM	955	0.0	OFF	955	0	0.00	0	64.6	64.6	64.6	
8-9 PM	847	0.0	OFF	847	0	0.00	0	64.8	64.8	64.8	
9-10 PM	718	0.0	OFF	718	0	0.00	0	65.0	65.0	65.0	
10-11 PM	573	0.0	OFF	573	0	0.00	0	65.3	65.3	65.3	
11PM-MID	428	0.0	OFF	428	0	0.00	0	65.6	65.6	65.6	

"OFF" INDICATES NO ROAD WORK (ALL LANES OPEN TO TRAFFIC)

+ INDICATES QUEUEING EXCEEDS USER-SPECIFIED MAXIMUM LIMIT

----- SITE BREAKDOWN DELAYS -----	
BREAKDOWN DURATION (MINS)	0
RANGE OF QUEUE DELAY - MIN	0.0
(VEH-H) MAX	0.0
AV BREAKDOWNS PER DAY	0.00
AV QUEUE DELAY/DAY (VEH-H)	0.0
AV TOTAL DELAY/DAY (VEH-H)	0.0

----- SITE ACCIDENT DELAYS -----	
BREAKDOWN DURATION (MINS)	0
RANGE OF QUEUE DELAY - MIN	0
(VEH-H) MAX	0
AV BREAKDOWNS PER DAY	0
AV QUEUE DELAY/DAY (VEH-H)	0
AV TOTAL DELAY/DAY (VEH-H)	0

AVERAGE ACCIDENT NUMBERS (PIA/DAY)	
MAIN ROUTE WITHOUT WORKS	0.0209
MAIN ROUTE WITH WORKS	0.0198
'DIVERSION'	0.0015
<small>PIA: Personal Injury Accidents</small>	
IMPACTS ON ROAD USERS	
ROAD USER COSTS PER DAY	\$21,460
CONGESTED HOURS PER DAY*	3

*Delays Exceeding User-Specified Maximum

**USH 41: STH 441 TO STH 55 (OUTAGAMIE AND BROWN COUNTIES)
OFF-PEAK DAY CLOSURE
NO DIVERSION ROUTE (MAX QUEUE METHOD)**

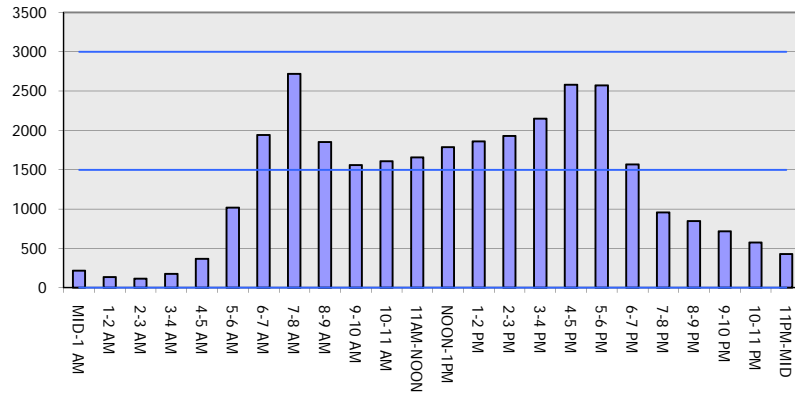
AUGUST

Analyzed for 2009
Construction Season

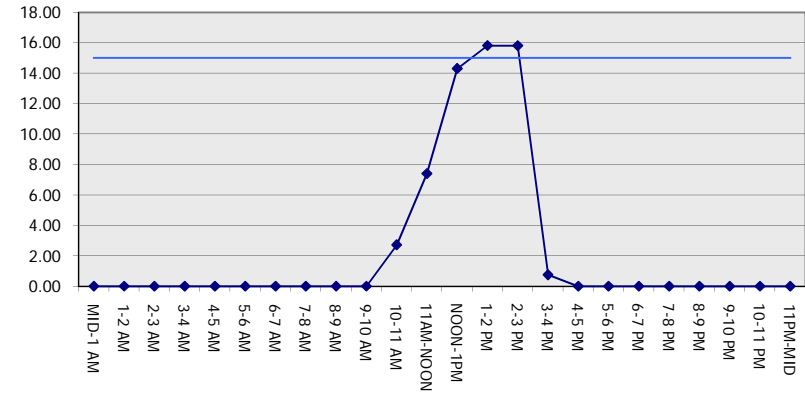
GRAPHICAL REPRESENTATION OF TRAFFIC MODEL INPUT AND OUTPUT

MON-THUR SOUTHBOUND DIRECTION

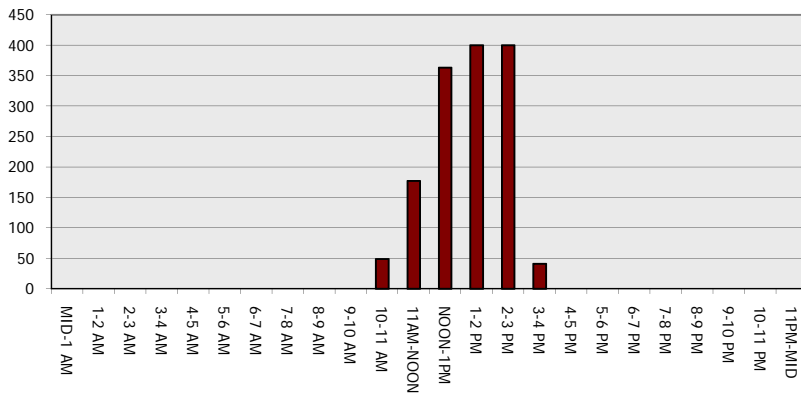
Main Route - Traffic Demand (Vehicles Per Hour)



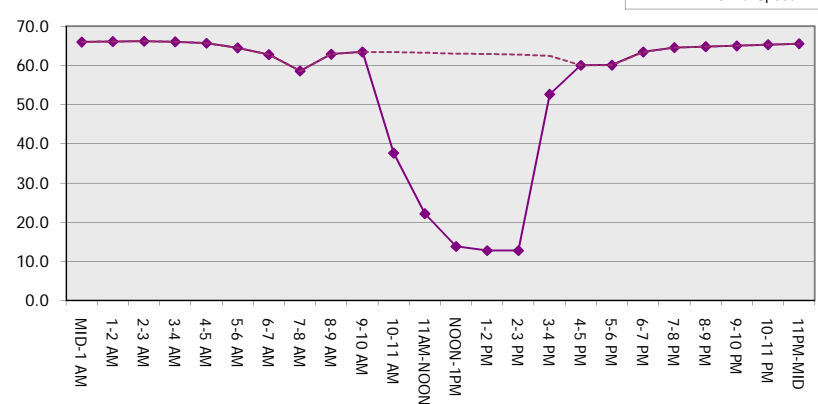
Main Route Average Delay Per Vehicle (Minutes)



Main Route - Average Queue Length (Vehicles)



Main Route - Average Speed (MPH)



USH 41: STH 441 TO STH 55 (OUTAGAMIE AND BROWN COUNTIES) OFF-PEAK DAY CLOSURE NO DIVERSION ROUTE (MAX QUEUE METHOD)	AUGUST
	Analyzed for 2009 Construction Season

SUMMARY OF TRAFFIC MODEL OUTPUT

MON-THUR NORTHBOUND DIRECTION

TIME OF DAY	FLOWS AND CAPACITY IN VEH/HR						AVERAGE SPEEDS IN MPH			
	MAIN ROUTE		SITE CAPA CITY	FLOW		AV.DEL PER VEH (MINS)	AVERAGE QUEUE (VEH)	MAIN ROUTE		SITE
	DEMAND FLOW	PCT HEAVY		MAIN ROUTE	'DIVER TED'			WITHOUT WORK ZONE	WITH WORK ZONE	
MID-1 AM	242	0.0	OFF	242	0	0.00	0	66.0	66.0	66.0
1-2 AM	208	0.0	OFF	208	0	0.00	0	66.0	66.0	66.0
2-3 AM	183	0.0	OFF	183	0	0.00	0	66.1	66.1	66.1
3-4 AM	147	0.0	OFF	147	0	0.00	0	66.1	66.1	66.1
4-5 AM	303	0.0	OFF	303	0	0.00	0	65.8	65.8	65.8
5-6 AM	828	0.0	OFF	828	0	0.00	0	64.8	64.8	64.8
6-7 AM	1643	0.0	OFF	1643	0	0.00	0	63.3	63.3	63.3
7-8 AM	2272	0.0	OFF	2272	0	0.00	0	62.2	62.2	62.2
8-9 AM	1652	0.0	OFF	1652	0	0.00	0	63.3	63.3	63.3
9-10 AM	1472	0.0	OFF	1472	0	0.00	0	63.7	63.7	63.7
10-11 AM	1507	0.0	1499	1507	0	1.13	3	63.6	49.5	30.9
11AM-NOON	1613	0.0	1500	1613	0	3.18	62	63.4	35.2	30.8
NOON-1PM	1698	0.0	1500	1698	0	8.82	218	63.2	19.7	30.8
1-2 PM	1791	0.0	1499	1600	191	15.39+	389	63.0	13.0	30.8
2-3 PM	2091	0.0	1499	1500	591	15.78+	400	62.5	12.7	30.8
3-4 PM	2361	0.0	OFF	2361	0	1.11	54	62.0	48.7	48.7
4-5 PM	2798	0.0	OFF	2798	0	0.00	0	57.8	57.8	57.8
5-6 PM	2492	0.0	OFF	2492	0	0.00	0	61.0	61.0	61.0
6-7 PM	1549	0.0	OFF	1549	0	0.00	0	63.5	63.5	63.5
7-8 PM	1090	0.0	OFF	1090	0	0.00	0	64.3	64.3	64.3
8-9 PM	1019	0.0	OFF	1019	0	0.00	0	64.5	64.5	64.5
9-10 PM	849	0.0	OFF	849	0	0.00	0	64.8	64.8	64.8
10-11 PM	613	0.0	OFF	613	0	0.00	0	65.3	65.3	65.3
11PM-MID	390	0.0	OFF	390	0	0.00	0	65.6	65.6	65.6

"OFF" INDICATES NO ROAD WORK (ALL LANES OPEN TO TRAFFIC)

+ INDICATES QUEUEING EXCEEDS USER-SPECIFIED MAXIMUM LIMIT

----- SITE BREAKDOWN DELAYS -----	
BREAKDOWN DURATION (MINS)	0
RANGE OF QUEUE DELAY - MIN (VEH-H) MAX	0.0
AV BREAKDOWNS PER DAY	0.00
AV QUEUE DELAY/DAY (VEH-H)	0.0
AV TOTAL DELAY/DAY (VEH-H)	0.0

----- SITE ACCIDENT DELAYS -----	
BREAKDOWN DURATION (MINS)	0
RANGE OF QUEUE DELAY - MIN (VEH-H) MAX	0
AV BREAKDOWNS PER DAY	0
AV QUEUE DELAY/DAY (VEH-H)	0
AV TOTAL DELAY/DAY (VEH-H)	0

AVERAGE ACCIDENT NUMBERS (PIA/DAY)	
MAIN ROUTE WITHOUT WORKS	0.0206
MAIN ROUTE WITH WORKS	0.0196
'DIVERSION'	0.0012

PIA: Personal Injury Accidents

ECONOMIC IMPACT ON ROAD USERS	
ROAD USER COSTS PER DAY	\$17,599
CONGESTED HOURS PER DAY*	2

*Delays Exceeding User-Specified Maximum

**USH 41: STH 441 TO STH 55 (OUTAGAMIE AND BROWN COUNTIES)
 OFF-PEAK DAY CLOSURE
 NO DIVERSION ROUTE (MAX QUEUE METHOD)**

AUGUST
 Analyzed for 2009
 Construction Season

GRAPHICAL REPRESENTATION OF TRAFFIC MODEL INPUT AND OUTPUT
MON-THUR NORTHBOUND DIRECTION

