

USH 41: USH 141 TO CTH B (BROWN AND OCONTO COUNTIES) OFF-PEAK DAY CLOSURE NO DIVERSION ROUTE (MAX QUEUE METHOD)	OCTOBER
	Analyzed for 2009 Construction Season

SUMMARY OF TRAFFIC MODEL OUTPUT

FRIDAY SOUTHBOUND DIRECTION

TIME OF DAY	FLOWS AND CAPACITY IN VEH/HR						AVERAGE SPEEDS IN MPH				
	MAIN ROUTE		SITE CAPA CITY	FLOW		AV.DEL PER VEH (MINS)	AVERAGE QUEUE (VEH)	MAIN ROUTE		SITE	
	DEMAND FLOW	PCT HEAVY		MAIN ROUTE	'DIVER TED'			WITHOUT WORK ZONE	WITH WORK ZONE		
MID-1 AM	53	0.0	OFF	53	0	0.00	0	66.3	66.3	66.3	
1-2 AM	38	0.0	OFF	38	0	0.00	0	66.3	66.3	66.3	
2-3 AM	75	0.0	OFF	75	0	0.00	0	66.3	66.3	66.3	
3-4 AM	84	0.0	OFF	84	0	0.00	0	66.2	66.2	66.2	
4-5 AM	295	0.0	OFF	295	0	0.00	0	65.8	65.8	65.8	
5-6 AM	825	0.0	OFF	825	0	0.00	0	64.8	64.8	64.8	
6-7 AM	1497	0.0	OFF	1497	0	0.00	0	63.6	63.6	63.6	
7-8 AM	1748	0.0	OFF	1748	0	0.00	0	63.2	63.2	63.2	
8-9 AM	1097	0.0	OFF	1097	0	0.00	0	64.3	64.3	64.3	
9-10 AM	949	0.0	1500	949	0	0.51	0	64.6	61.4	41.9	
10-11 AM	961	0.0	1500	961	0	0.52	0	64.6	61.4	41.8	
11AM-NOON	836	0.0	1500	836	0	0.50	0	64.8	61.7	42.3	
NOON-1PM	861	0.0	1500	861	0	0.51	0	64.8	61.6	42.2	
1-2 PM	922	0.0	1500	922	0	0.51	0	64.6	61.5	42.0	
2-3 PM	944	0.0	1500	944	0	0.51	0	64.6	61.4	41.9	
3-4 PM	975	0.0	1500	975	0	0.52	0	64.6	61.4	41.8	
4-5 PM	1156	0.0	OFF	1156	0	0.00	0	64.2	64.2	64.2	
5-6 PM	1109	0.0	OFF	1109	0	0.00	0	64.3	64.3	64.3	
6-7 PM	780	0.0	OFF	780	0	0.00	0	65.0	65.0	65.0	
7-8 PM	674	0.0	OFF	674	0	0.00	0	65.1	65.1	65.1	
8-9 PM	449	0.0	OFF	449	0	0.00	0	65.6	65.6	65.6	
9-10 PM	358	0.0	OFF	358	0	0.00	0	65.7	65.7	65.7	
10-11 PM	227	0.0	OFF	227	0	0.00	0	66.0	66.0	66.0	
11PM-MID	126	0.0	OFF	126	0	0.00	0	66.1	66.1	66.1	

"OFF" INDICATES NO ROAD WORK (ALL LANES OPEN TO TRAFFIC)

----- SITE BREAKDOWN DELAYS -----	
BREAKDOWN DURATION (MINS)	0
RANGE OF QUEUE DELAY - MIN (VEH-H) MAX	0.0
AV BREAKDOWNS PER DAY	0.00
AV QUEUE DELAY/DAY (VEH-H)	0.0
AV TOTAL DELAY/DAY (VEH-H)	0.0

----- SITE ACCIDENT DELAYS -----	
BREAKDOWN DURATION (MINS)	0
RANGE OF QUEUE DELAY - MIN (VEH-H) MAX	0
AV BREAKDOWNS PER DAY	0
AV QUEUE DELAY/DAY (VEH-H)	0
AV TOTAL DELAY/DAY (VEH-H)	0

AVERAGE ACCIDENT NUMBERS (PIA/DAY)	
MAIN ROUTE WITHOUT WORKS	0.0287
MAIN ROUTE WITH WORKS	0.0283
'DIVERSION'	0.0000
<small>PIA: Personal Injury Accidents</small>	
IMPACTS ON ROAD USERS	
ROAD USER COSTS PER DAY	\$457
CONGESTED HOURS PER DAY*	0

*Delays Exceeding User-Specified Maximum

**USH 41: USH 141 TO CTH B (BROWN AND OCONTO COUNTIES)
OFF-PEAK DAY CLOSURE
NO DIVERSION ROUTE (MAX QUEUE METHOD)**

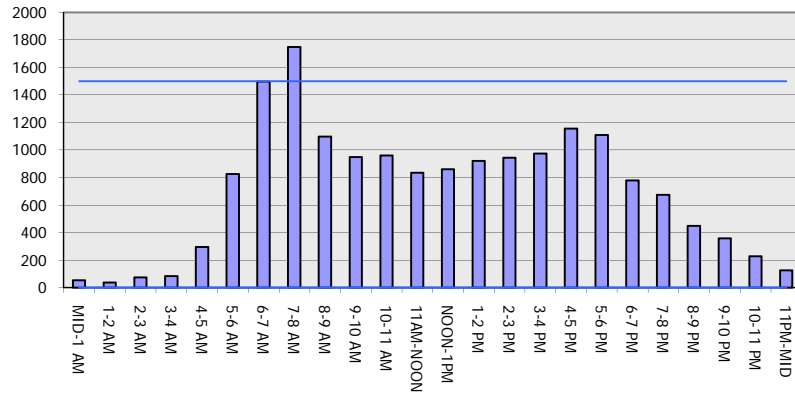
OCTOBER

Analyzed for 2009
Construction Season

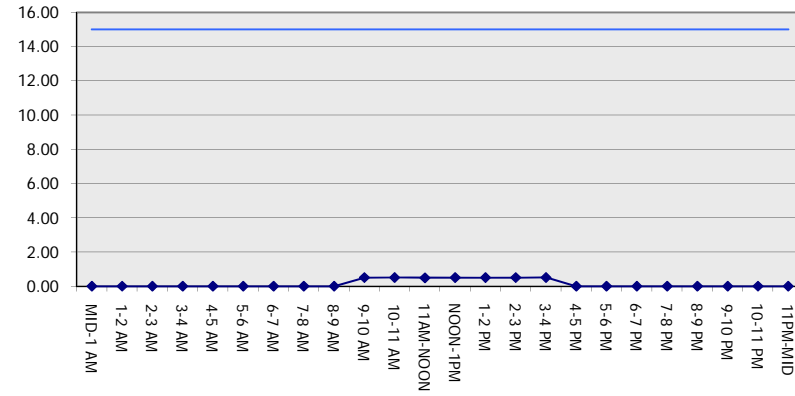
GRAPHICAL REPRESENTATION OF TRAFFIC MODEL INPUT AND OUTPUT

FRIDAY SOUTHBOUND DIRECTION

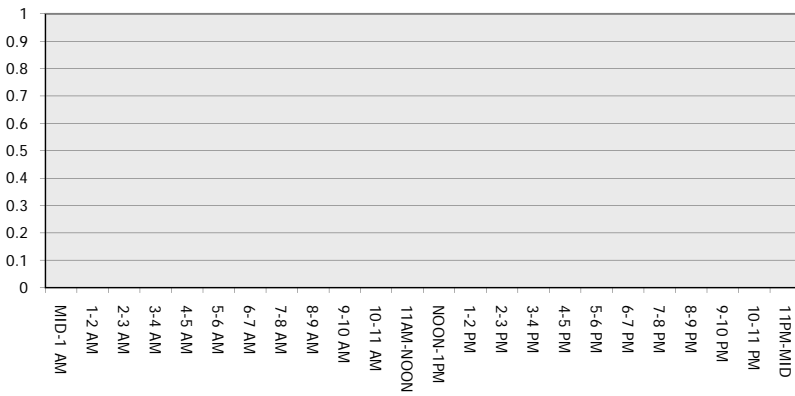
Main Route - Traffic Demand (Vehicles Per Hour)



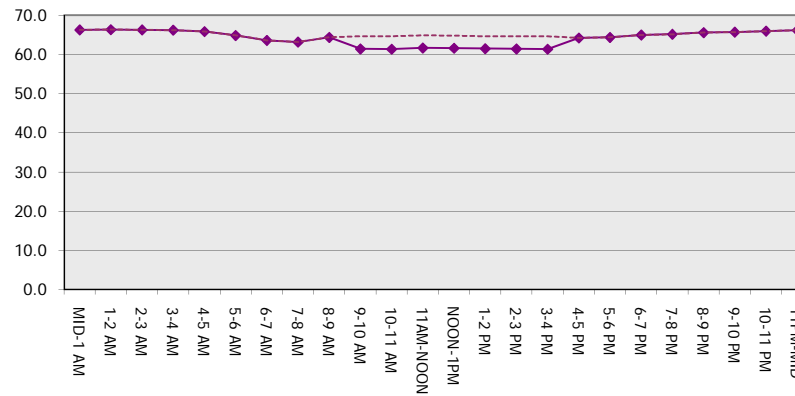
Main Route Average Delay Per Vehicle (Minutes)



Main Route - Average Queue Length (Vehicles)



Main Route - Average Speed (MPH)



USH 41: USH 141 TO CTH B (BROWN AND OCONTO COUNTIES) OFF-PEAK DAY CLOSURE NO DIVERSION ROUTE (MAX QUEUE METHOD)	OCTOBER Analyzed for 2009 Construction Season
--	--

SUMMARY OF TRAFFIC MODEL OUTPUT
FRIDAY NORTHBOUND DIRECTION

TIME OF DAY	FLOWS AND CAPACITY IN VEH/HR						AVERAGE SPEEDS IN MPH			
	MAIN ROUTE		SITE CAPA CITY	FLOW		AV.DEL PER VEH (MINS)	AVERAGE QUEUE (VEH)	MAIN ROUTE		SITE
	DEMAND FLOW	PCT HEAVY		MAIN ROUTE	'DIVER TED'			WITHOUT WORK ZONE	WITH WORK ZONE	
MID-1 AM	115	0.0	OFF	115	0	0.00	0	66.2	66.2	66.2
1-2 AM	104	0.0	OFF	104	0	0.00	0	66.2	66.2	66.2
2-3 AM	91	0.0	OFF	91	0	0.00	0	66.2	66.2	66.2
3-4 AM	82	0.0	OFF	82	0	0.00	0	66.3	66.3	66.3
4-5 AM	111	0.0	OFF	111	0	0.00	0	66.2	66.2	66.2
5-6 AM	269	0.0	OFF	269	0	0.00	0	65.9	65.9	65.9
6-7 AM	512	0.0	OFF	512	0	0.00	0	65.5	65.5	65.5
7-8 AM	612	0.0	OFF	612	0	0.00	0	65.3	65.3	65.3
8-9 AM	633	0.0	OFF	633	0	0.00	0	65.2	65.2	65.2
9-10 AM	701	0.0	1500	701	0	0.49	0	65.1	62.0	42.7
10-11 AM	854	0.0	1500	854	0	0.51	0	64.8	61.6	42.2
11AM-NOON	914	0.0	1500	914	0	0.51	0	64.7	61.5	42.0
NOON-1PM	1049	0.0	1500	1049	0	0.52	0	64.5	61.2	41.5
1-2 PM	1302	0.0	1499	1302	0	0.77	0	64.0	59.4	35.5
2-3 PM	1546	0.0	1499	1546	0	1.55	15	63.5	55.0	31.2
3-4 PM	1957	0.0	1500	1901	56	9.72+	259	62.7	32.0	30.8
4-5 PM	2295	0.0	OFF	2295	0	1.63	63	62.1	53.6	53.6
5-6 PM	2313	0.0	OFF	2313	0	0.00	0	62.1	62.1	62.1
6-7 PM	1652	0.0	OFF	1652	0	0.00	0	63.3	63.3	63.3
7-8 PM	1123	0.0	OFF	1123	0	0.00	0	64.3	64.3	64.3
8-9 PM	858	0.0	OFF	858	0	0.00	0	64.8	64.8	64.8
9-10 PM	746	0.0	OFF	746	0	0.00	0	65.0	65.0	65.0
10-11 PM	532	0.0	OFF	532	0	0.00	0	65.4	65.4	65.4
11PM-MID	334	0.0	OFF	334	0	0.00	0	65.8	65.8	65.8

"OFF" INDICATES NO ROAD WORK (ALL LANES OPEN TO TRAFFIC)

+ INDICATES QUEUEING EXCEEDS USER-SPECIFIED MAXIMUM LIMIT

----- SITE BREAKDOWN DELAYS -----	
BREAKDOWN DURATION (MINS)	0
RANGE OF QUEUE DELAY - MIN (VEH-H) MAX	0.0
AV BREAKDOWNS PER DAY	0.00
AV QUEUE DELAY/DAY (VEH-H)	0.0
AV TOTAL DELAY/DAY (VEH-H)	0.0

----- SITE ACCIDENT DELAYS -----	
BREAKDOWN DURATION (MINS)	0
RANGE OF QUEUE DELAY - MIN (VEH-H) MAX	0
AV BREAKDOWNS PER DAY	0
AV QUEUE DELAY/DAY (VEH-H)	0
AV TOTAL DELAY/DAY (VEH-H)	0

AVERAGE ACCIDENT NUMBERS (PIA/DAY)	
MAIN ROUTE WITHOUT WORKS	0.0349
MAIN ROUTE WITH WORKS	0.0343
'DIVERSION'	0.0002

PIA: Personal Injury Accidents

ECONOMIC IMPACT ON ROAD USERS	
ROAD USER COSTS PER DAY	\$3,871
CONGESTED HOURS PER DAY*	1

*Delays Exceeding User-Specified Maximum

**USH 41: USH 141 TO CTH B (BROWN AND OCONTO COUNTIES)
OFF-PEAK DAY CLOSURE
NO DIVERSION ROUTE (MAX QUEUE METHOD)**

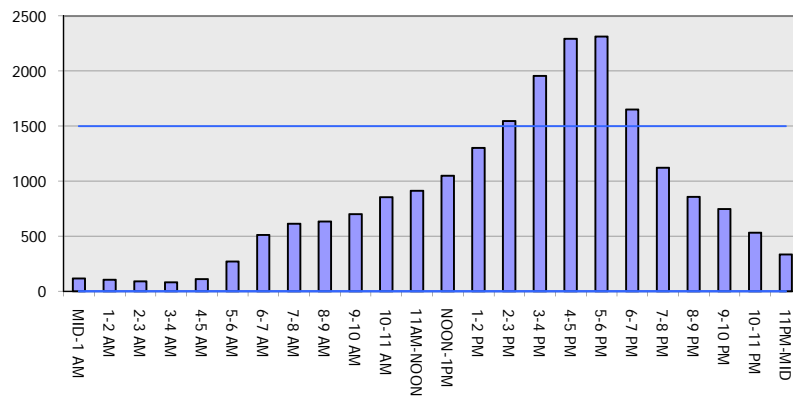
OCTOBER

Analyzed for 2009
Construction Season

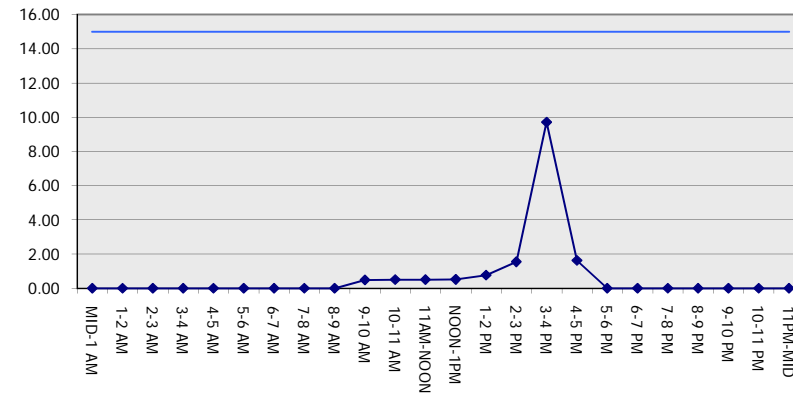
GRAPHICAL REPRESENTATION OF TRAFFIC MODEL INPUT AND OUTPUT

FRIDAY NORTHBOUND DIRECTION

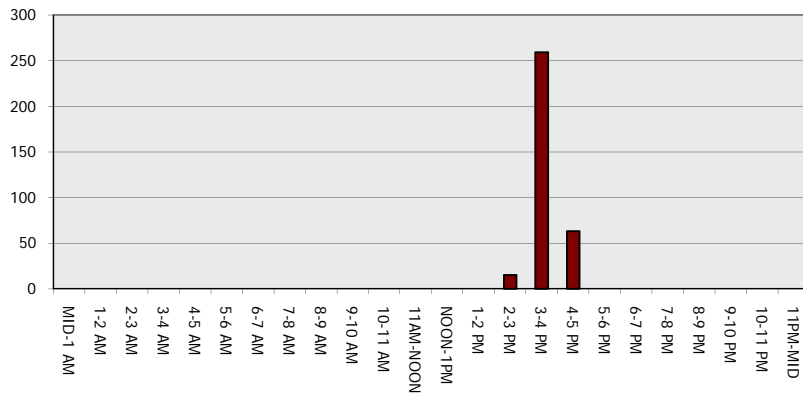
Main Route - Traffic Demand (Vehicles Per Hour)



Main Route Average Delay Per Vehicle (Minutes)



Main Route - Average Queue Length (Vehicles)



Main Route - Average Speed (MPH)

