

<b>USH 41: CTH B TO CTH M (BROWN COUNTY)</b> <b>OFF-PEAK DAY CLOSURE</b> <b>NO DIVERSION ROUTE (MAX QUEUE METHOD)</b>	<b>OCTOBER</b>
	Analyzed for 2009 Construction Season

**SUMMARY OF TRAFFIC MODEL OUTPUT**

FRIDAY      SOUTHBOUND DIRECTION

TIME OF DAY	FLOWS AND CAPACITY IN VEH/HR						AVERAGE SPEEDS IN MPH				
	MAIN ROUTE		SITE CAPA CITY	FLOW		AV.DEL PER VEH (MINS)	AVERAGE QUEUE (VEH)	MAIN ROUTE		SITE	
	DEMAND FLOW	PCT HEAVY		MAIN ROUTE	'DIVER TED'			WITHOUT WORK ZONE	WITH WORK ZONE		
MID-1 AM	75	0.0	OFF	75	0	0.00	0	66.3	66.3	66.3	
1-2 AM	54	0.0	OFF	54	0	0.00	0	66.3	66.3	66.3	
2-3 AM	106	0.0	OFF	106	0	0.00	0	66.2	66.2	66.2	
3-4 AM	118	0.0	OFF	118	0	0.00	0	66.1	66.1	66.1	
4-5 AM	416	0.0	OFF	416	0	0.00	0	65.6	65.6	65.6	
5-6 AM	1160	0.0	OFF	1160	0	0.00	0	64.2	64.2	64.2	
6-7 AM	2106	0.0	OFF	2106	0	0.00	0	62.5	62.5	62.5	
7-8 AM	2458	0.0	OFF	2458	0	0.00	0	61.3	61.3	61.3	
8-9 AM	1543	0.0	OFF	1543	0	0.00	0	63.5	63.5	63.5	
9-10 AM	1335	0.0	OFF	1335	0	0.00	0	63.9	63.9	63.9	
10-11 AM	1351	0.0	1500	1351	0	0.83	0	63.8	49.7	34.2	
11AM-NOON	1177	0.0	1500	1177	0	0.61	0	64.2	53.1	39.2	
NOON-1PM	1212	0.0	1500	1212	0	0.65	0	64.1	52.4	38.1	
1-2 PM	1297	0.0	1500	1297	0	0.76	0	64.0	50.7	35.6	
2-3 PM	1328	0.0	1500	1328	0	0.80	0	63.9	50.1	34.8	
3-4 PM	1372	0.0	OFF	1372	0	0.00	0	63.8	63.8	63.8	
4-5 PM	1626	0.0	OFF	1626	0	0.00	0	63.3	63.3	63.3	
5-6 PM	1560	0.0	OFF	1560	0	0.00	0	63.5	63.5	63.5	
6-7 PM	1097	0.0	OFF	1097	0	0.00	0	64.3	64.3	64.3	
7-8 PM	948	0.0	OFF	948	0	0.00	0	64.6	64.6	64.6	
8-9 PM	631	0.0	OFF	631	0	0.00	0	65.2	65.2	65.2	
9-10 PM	503	0.0	OFF	503	0	0.00	0	65.5	65.5	65.5	
10-11 PM	319	0.0	OFF	319	0	0.00	0	65.8	65.8	65.8	
11PM-MID	177	0.0	OFF	177	0	0.00	0	66.1	66.1	66.1	

"OFF" INDICATES NO ROAD WORK (ALL LANES OPEN TO TRAFFIC)

*----- SITE BREAKDOWN DELAYS -----*	
BREAKDOWN DURATION (MINS)	0
RANGE OF QUEUE DELAY - MIN (VEH-H) MAX	0.0
AV BREAKDOWNS PER DAY	0.00
AV QUEUE DELAY/DAY (VEH-H)	0.0
AV TOTAL DELAY/DAY (VEH-H)	0.0

*----- SITE ACCIDENT DELAYS -----*	
BREAKDOWN DURATION (MINS)	0
RANGE OF QUEUE DELAY - MIN (VEH-H) MAX	0
AV BREAKDOWNS PER DAY	0
AV QUEUE DELAY/DAY (VEH-H)	0
AV TOTAL DELAY/DAY (VEH-H)	0

AVERAGE ACCIDENT NUMBERS (PIA/DAY)	
MAIN ROUTE WITHOUT WORKS	0.0118
MAIN ROUTE WITH WORKS	0.0114
'DIVERSION'	0.0000
<small>PIA: Personal Injury Accidents</small>	
IMPACTS ON ROAD USERS	
ROAD USER COSTS PER DAY	\$971
CONGESTED HOURS PER DAY*	0

\*Delays Exceeding User-Specified Maximum

**USH 41: CTH B TO CTH M (BROWN COUNTY)  
OFF-PEAK DAY CLOSURE  
NO DIVERSION ROUTE (MAX QUEUE METHOD)**

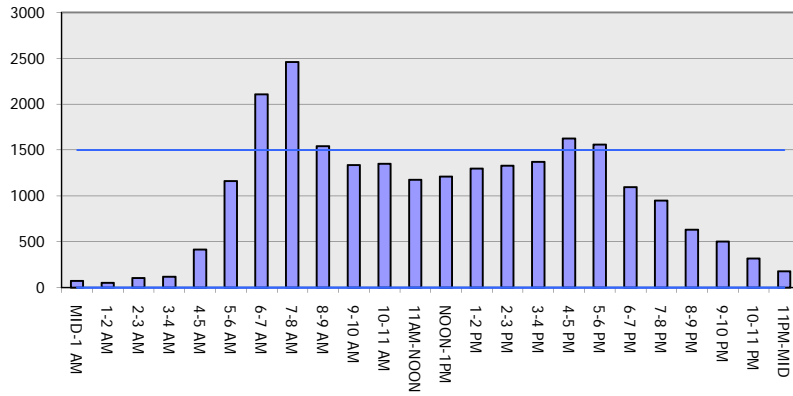
**OCTOBER**

Analyzed for 2009  
Construction Season

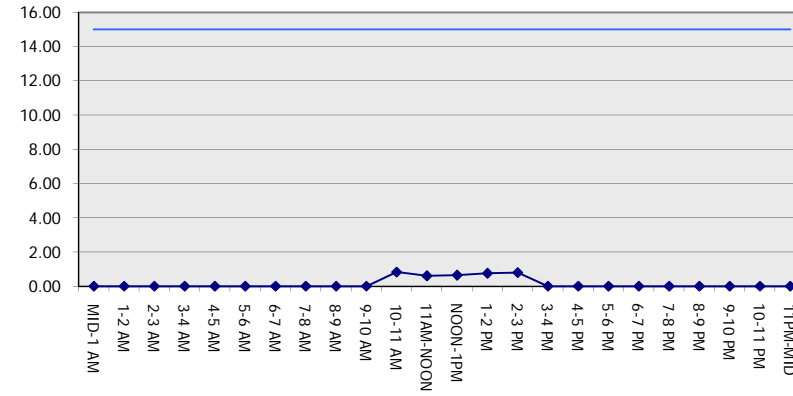
**GRAPHICAL REPRESENTATION OF TRAFFIC MODEL INPUT AND OUTPUT**

**FRIDAY SOUTHBOUND DIRECTION**

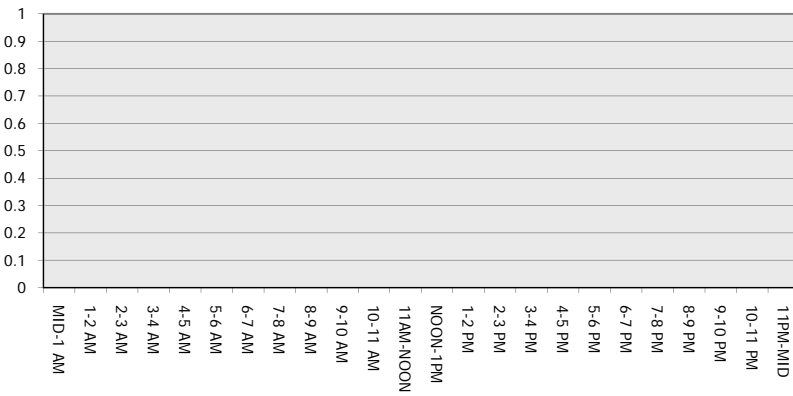
**Main Route - Traffic Demand (Vehicles Per Hour)**



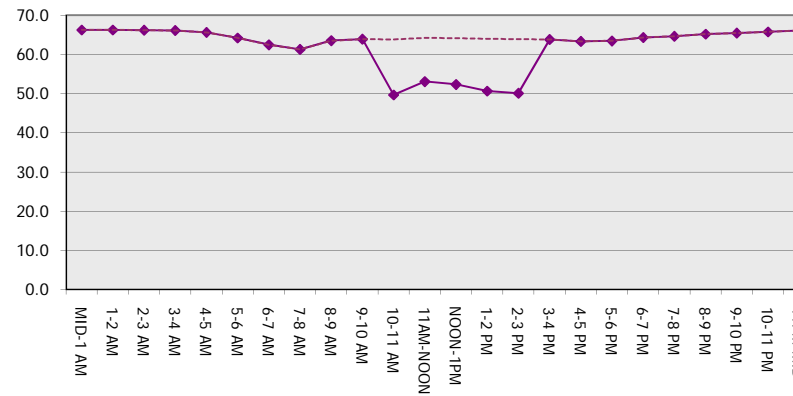
**Main Route Average Delay Per Vehicle (Minutes)**



**Main Route - Average Queue Length (Vehicles)**



**Main Route - Average Speed (MPH)**



<b>USH 41: CTH B TO CTH M (BROWN COUNTY)</b> <b>OFF-PEAK DAY CLOSURE</b> <b>NO DIVERSION ROUTE (MAX QUEUE METHOD)</b>	<b>OCTOBER</b>
	Analyzed for 2009 Construction Season

**SUMMARY OF TRAFFIC MODEL OUTPUT**

FRIDAY NORTHBOUND DIRECTION

TIME OF DAY	FLOWS AND CAPACITY IN VEH/HR						AVERAGE SPEEDS IN MPH			
	MAIN ROUTE		SITE CAPA CITY	FLOW		AV.DEL PER VEH (MINS)	AVERAGE QUEUE (VEH)	MAIN ROUTE		SITE
	DEMAND FLOW	PCT HEAVY		MAIN ROUTE	'DIVER TED'			WITHOUT WORK ZONE	WITH WORK ZONE	
MID-1 AM	163	0.0	OFF	163	0	0.00	0	66.1	66.1	66.1
1-2 AM	146	0.0	OFF	146	0	0.00	0	66.1	66.1	66.1
2-3 AM	128	0.0	OFF	128	0	0.00	0	66.1	66.1	66.1
3-4 AM	115	0.0	OFF	115	0	0.00	0	66.2	66.2	66.2
4-5 AM	156	0.0	OFF	156	0	0.00	0	66.1	66.1	66.1
5-6 AM	378	0.0	OFF	378	0	0.00	0	65.7	65.7	65.7
6-7 AM	719	0.0	OFF	719	0	0.00	0	65.0	65.0	65.0
7-8 AM	862	0.0	OFF	862	0	0.00	0	64.8	64.8	64.8
8-9 AM	890	0.0	OFF	890	0	0.00	0	64.7	64.7	64.7
9-10 AM	986	0.0	OFF	986	0	0.00	0	64.5	64.5	64.5
10-11 AM	1201	0.0	1500	1201	0	0.64	0	64.1	52.6	38.4
11AM-NOON	1286	0.0	1499	1286	0	0.75	0	64.0	50.9	35.9
NOON-1PM	1475	0.0	1499	1475	0	1.15	5	63.7	45.7	31.8
1-2 PM	1831	0.0	1500	1831	0	6.11	165	63.0	20.5	30.8
2-3 PM	2175	0.0	1499	1504	671	16.09+	408	62.3	10.4	30.8
3-4 PM	2753	0.0	OFF	2753	0	0.98	50	58.3	44.6	44.6
4-5 PM	3228	0.0	OFF	3228	0	0.00	0	53.4	53.4	53.4
5-6 PM	3253	0.0	OFF	3253	0	0.00	0	53.2	53.2	53.2
6-7 PM	2324	0.0	OFF	2324	0	0.00	0	62.0	62.0	62.0
7-8 PM	1580	0.0	OFF	1580	0	0.00	0	63.5	63.5	63.5
8-9 PM	1207	0.0	OFF	1207	0	0.00	0	64.1	64.1	64.1
9-10 PM	1049	0.0	OFF	1049	0	0.00	0	64.5	64.5	64.5
10-11 PM	747	0.0	OFF	747	0	0.00	0	65.0	65.0	65.0
11PM-MID	469	0.0	OFF	469	0	0.00	0	65.5	65.5	65.5

"OFF" INDICATES NO ROAD WORK (ALL LANES OPEN TO TRAFFIC)

+ INDICATES QUEUEING EXCEEDS USER-SPECIFIED MAXIMUM LIMIT

*----- SITE BREAKDOWN DELAYS -----*	
BREAKDOWN DURATION (MINS)	0
RANGE OF QUEUE DELAY - MIN (VEH-H) MAX	0.0
AV BREAKDOWNS PER DAY	0.00
AV QUEUE DELAY/DAY (VEH-H)	0.0
AV TOTAL DELAY/DAY (VEH-H)	0.0

*----- SITE ACCIDENT DELAYS -----*	
BREAKDOWN DURATION (MINS)	0
RANGE OF QUEUE DELAY - MIN (VEH-H) MAX	0
AV BREAKDOWNS PER DAY	0
AV QUEUE DELAY/DAY (VEH-H)	0
AV TOTAL DELAY/DAY (VEH-H)	0

AVERAGE ACCIDENT NUMBERS (PIA/DAY)	
MAIN ROUTE WITHOUT WORKS	0.0144
MAIN ROUTE WITH WORKS	0.0136
'DIVERSION'	0.0008

PIA: Personal Injury Accidents

ECONOMIC IMPACT ON ROAD USERS	
ROAD USER COSTS PER DAY	\$10,865
CONGESTED HOURS PER DAY*	1

\*Delays Exceeding User-Specified Maximum

**USH 41: CTH B TO CTH M (BROWN COUNTY)  
OFF-PEAK DAY CLOSURE  
NO DIVERSION ROUTE (MAX QUEUE METHOD)**

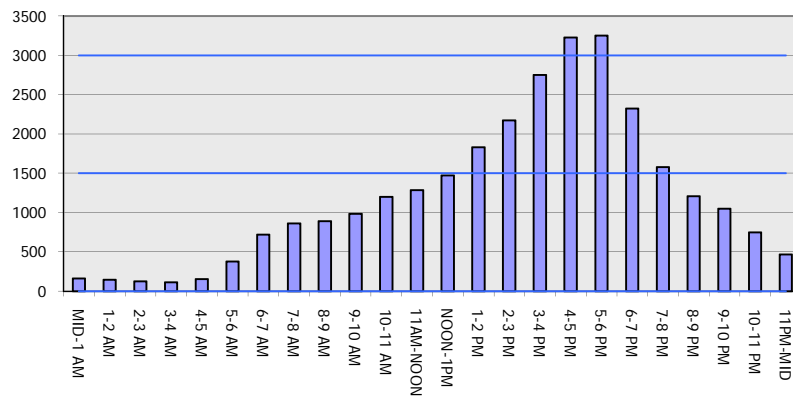
**OCTOBER**

Analyzed for 2009  
Construction Season

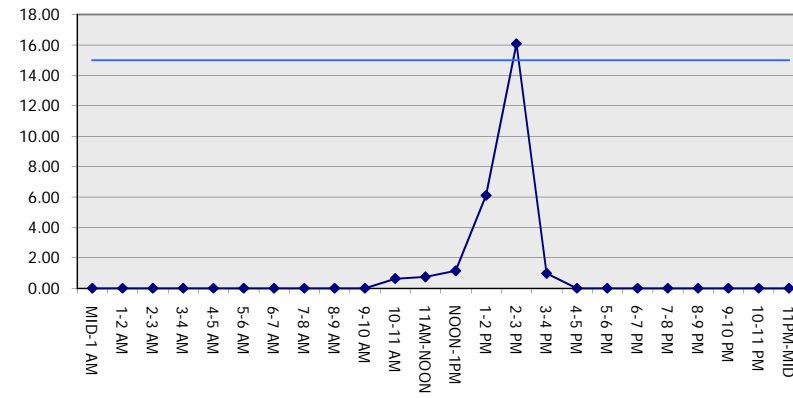
**GRAPHICAL REPRESENTATION OF TRAFFIC MODEL INPUT AND OUTPUT**

**FRIDAY NORTHBOUND DIRECTION**

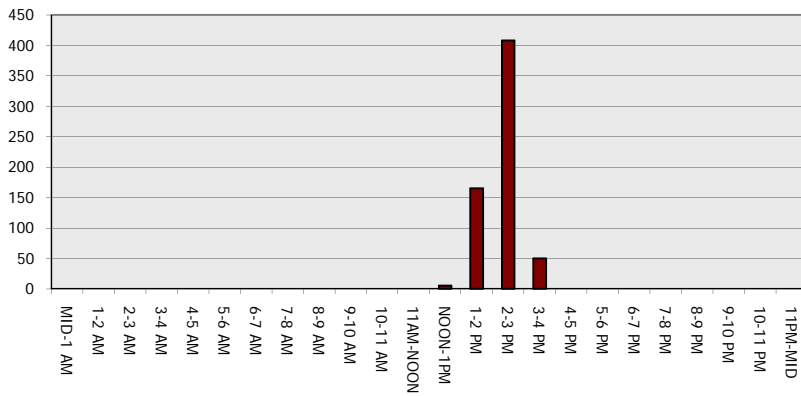
**Main Route - Traffic Demand (Vehicles Per Hour)**



**Main Route Average Delay Per Vehicle (Minutes)**



**Main Route - Average Queue Length (Vehicles)**



**Main Route - Average Speed (MPH)**

