

STH 172: STH 57 TO IH 43 (BROWN COUNTY) OFF-PEAK DAY CLOSURE NO DIVERSION ROUTE (MAX QUEUE METHOD)	AUGUST
	Analyzed for 2009 Construction Season

SUMMARY OF TRAFFIC MODEL OUTPUT

MON-THUR WESTBOUND DIRECTION

TIME OF DAY	FLOWS AND CAPACITY IN VEH/HR						AVERAGE SPEEDS IN MPH				
	MAIN ROUTE		SITE CAPA CITY	FLOW		AV.DEL PER VEH (MINS)	AVERAGE QUEUE (VEH)	MAIN ROUTE		SITE	
	DEMAND FLOW	PCT HEAVY		MAIN ROUTE	'DIVER TED'			WITHOUT WORK ZONE	WITH WORK ZONE		
MID-1 AM	157	0.0	OFF	157	0	0.00	0	66.1	66.1	66.1	
1-2 AM	99	0.0	OFF	99	0	0.00	0	66.2	66.2	66.2	
2-3 AM	93	0.0	OFF	93	0	0.00	0	66.2	66.2	66.2	
3-4 AM	122	0.0	OFF	122	0	0.00	0	66.1	66.1	66.1	
4-5 AM	352	0.0	OFF	352	0	0.00	0	65.7	65.7	65.7	
5-6 AM	1146	0.0	OFF	1146	0	0.00	0	64.3	64.3	64.3	
6-7 AM	2299	0.0	OFF	2299	0	0.00	0	62.1	62.1	62.1	
7-8 AM	3128	0.0	OFF	3128	0	0.00	0	54.5	54.5	54.5	
8-9 AM	1967	0.0	OFF	1967	0	0.00	0	62.7	62.7	62.7	
9-10 AM	1653	0.0	OFF	1653	0	0.00	0	63.3	63.3	63.3	
10-11 AM	1708	0.0	1499	1708	0	4.17	98	63.2	28.0	30.8	
11AM-NOON	1832	0.0	1500	1655	177	13.36+	342	63.0	12.6	30.8	
NOON-1PM	1887	0.0	1500	1500	387	15.82+	400	62.8	10.9	30.8	
1-2 PM	1876	0.0	1500	1500	376	15.82+	400	62.9	10.9	30.8	
2-3 PM	1958	0.0	1500	1500	458	15.81+	400	62.7	10.9	30.8	
3-4 PM	2017	0.0	OFF	2017	0	0.53	33	62.7	54.0	54.0	
4-5 PM	2253	0.0	OFF	2253	0	0.00	0	62.2	62.2	62.2	
5-6 PM	2309	0.0	OFF	2309	0	0.00	0	62.1	62.1	62.1	
6-7 PM	1566	0.0	OFF	1566	0	0.00	0	63.5	63.5	63.5	
7-8 PM	1091	0.0	OFF	1091	0	0.00	0	64.3	64.3	64.3	
8-9 PM	877	0.0	OFF	877	0	0.00	0	64.8	64.8	64.8	
9-10 PM	660	0.0	OFF	660	0	0.00	0	65.1	65.1	65.1	
10-11 PM	465	0.0	OFF	465	0	0.00	0	65.5	65.5	65.5	
11PM-MID	279	0.0	OFF	279	0	0.00	0	65.9	65.9	65.9	

"OFF" INDICATES NO ROAD WORK (ALL LANES OPEN TO TRAFFIC)

+ INDICATES QUEUEING EXCEEDS USER-SPECIFIED MAXIMUM LIMIT

----- SITE BREAKDOWN DELAYS -----	
BREAKDOWN DURATION (MINS)	0
RANGE OF QUEUE DELAY - MIN (VEH-H) MAX	0.0
AV BREAKDOWNS PER DAY	0.00
AV QUEUE DELAY/DAY (VEH-H)	0.0
AV TOTAL DELAY/DAY (VEH-H)	0.0

----- SITE ACCIDENT DELAYS -----	
BREAKDOWN DURATION (MINS)	0
RANGE OF QUEUE DELAY - MIN (VEH-H) MAX	0
AV BREAKDOWNS PER DAY	0
AV QUEUE DELAY/DAY (VEH-H)	0
AV TOTAL DELAY/DAY (VEH-H)	0

AVERAGE ACCIDENT NUMBERS (PIA/DAY)	
MAIN ROUTE WITHOUT WORKS	0.0177
MAIN ROUTE WITH WORKS	0.0164
'DIVERSION'	0.0018
PIA: Personal Injury Accidents	
IMPACTS ON ROAD USERS	
ROAD USER COSTS PER DAY	\$26,191
CONGESTED HOURS PER DAY*	4

*Delays Exceeding User-Specified Maximum

**STH 172: STH 57 TO IH 43 (BROWN COUNTY)
OFF-PEAK DAY CLOSURE
NO DIVERSION ROUTE (MAX QUEUE METHOD)**

AUGUST

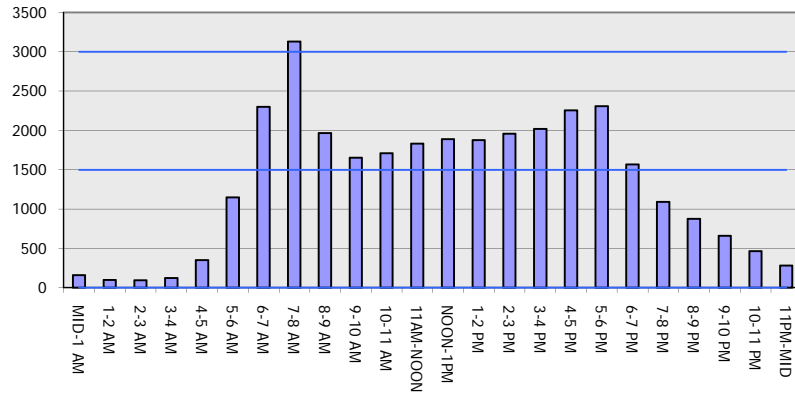
Analyzed for 2009
Construction Season

GRAPHICAL REPRESENTATION OF TRAFFIC MODEL INPUT AND OUTPUT

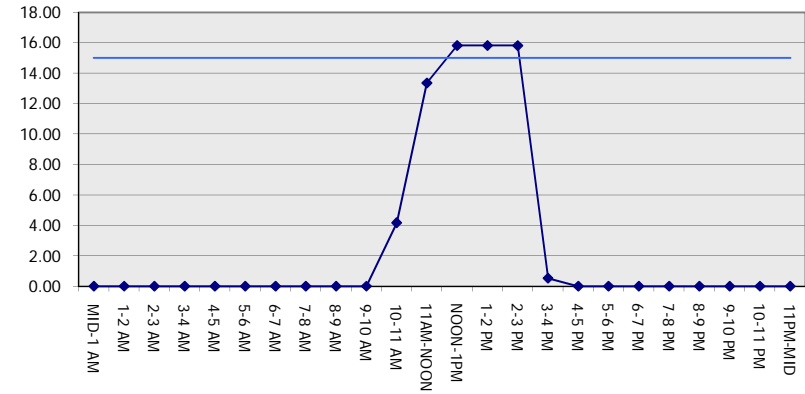
MON-THUR

WESTBOUND DIRECTION

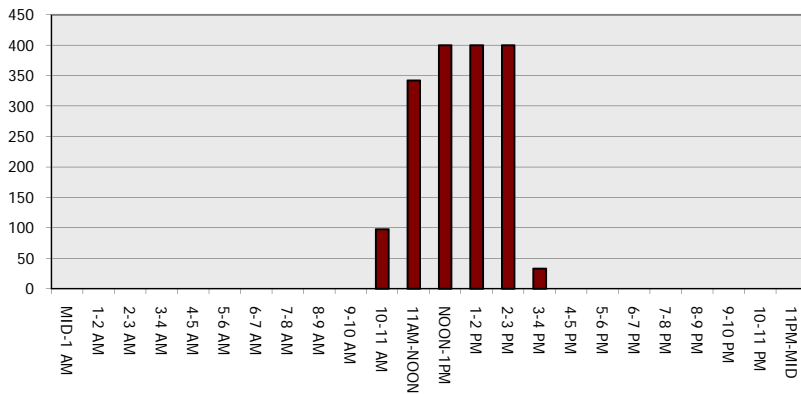
Main Route - Traffic Demand (Vehicles Per Hour)



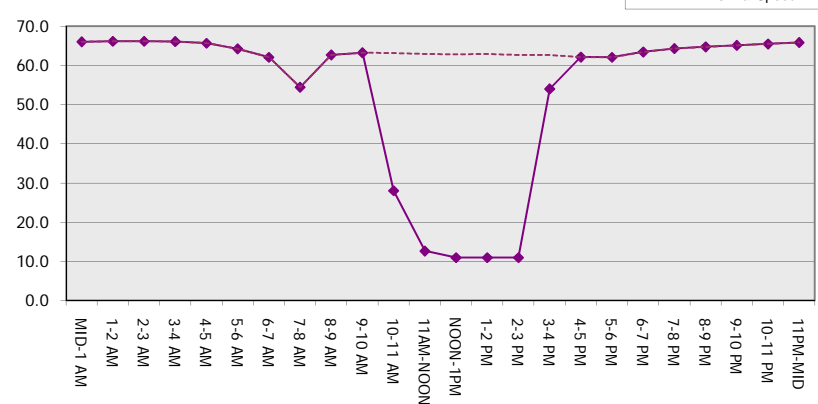
Main Route Average Delay Per Vehicle (Minutes)



Main Route - Average Queue Length (Vehicles)



Main Route - Average Speed (MPH)



STH 172: STH 57 TO IH 43 (BROWN COUNTY) OFF-PEAK DAY CLOSURE NO DIVERSION ROUTE (MAX QUEUE METHOD)	AUGUST
	Analyzed for 2009 Construction Season

SUMMARY OF TRAFFIC MODEL OUTPUT

MON-THUR EASTBOUND DIRECTION

TIME OF DAY	FLOWS AND CAPACITY IN VEH/HR						AVERAGE SPEEDS IN MPH			
	MAIN ROUTE		SITE CAPA CITY	FLOW		AV.DEL PER VEH (MINS)	AVERAGE QUEUE (VEH)	MAIN ROUTE		SITE
	DEMAND FLOW	PCT HEAVY		MAIN ROUTE	'DIVER TED'			WITHOUT WORK ZONE	WITH WORK ZONE	
MID-1 AM	212	0.0	OFF	212	0	0.00	0	66.0	66.0	66.0
1-2 AM	136	0.0	OFF	136	0	0.00	0	66.1	66.1	66.1
2-3 AM	128	0.0	OFF	128	0	0.00	0	66.1	66.1	66.1
3-4 AM	125	0.0	OFF	125	0	0.00	0	66.1	66.1	66.1
4-5 AM	209	0.0	OFF	209	0	0.00	0	66.0	66.0	66.0
5-6 AM	536	0.0	OFF	536	0	0.00	0	65.4	65.4	65.4
6-7 AM	1180	0.0	OFF	1180	0	0.00	0	64.2	64.2	64.2
7-8 AM	1622	0.0	OFF	1622	0	0.00	0	63.3	63.3	63.3
8-9 AM	1429	0.0	OFF	1429	0	0.00	0	63.7	63.7	63.7
9-10 AM	1396	0.0	OFF	1396	0	0.00	0	63.8	63.8	63.8
10-11 AM	1495	0.0	1499	1495	0	1.13	3	63.6	47.4	31.2
11AM-NOON	1671	0.0	1500	1671	0	4.00	89	63.3	28.7	30.8
NOON-1PM	1810	0.0	1500	1713	97	12.48+	321	63.0	13.3	30.8
1-2 PM	1843	0.0	1500	1500	343	15.82+	400	63.0	10.9	30.8
2-3 PM	2173	0.0	1500	1500	673	15.79+	400	62.3	10.9	30.8
3-4 PM	2723	0.0	OFF	2723	0	1.20	62	58.6	43.9	43.9
4-5 PM	3472	0.0	OFF	3472	0	0.00	0	50.9	50.9	50.9
5-6 PM	3106	0.0	OFF	3106	0	0.00	0	54.7	54.7	54.7
6-7 PM	1901	0.0	OFF	1901	0	0.00	0	62.8	62.8	62.8
7-8 PM	1343	0.0	OFF	1343	0	0.00	0	63.9	63.9	63.9
8-9 PM	1219	0.0	OFF	1219	0	0.00	0	64.1	64.1	64.1
9-10 PM	980	0.0	OFF	980	0	0.00	0	64.6	64.6	64.6
10-11 PM	689	0.0	OFF	689	0	0.00	0	65.1	65.1	65.1
11PM-MID	424	0.0	OFF	424	0	0.00	0	65.6	65.6	65.6

"OFF" INDICATES NO ROAD WORK (ALL LANES OPEN TO TRAFFIC)

+ INDICATES QUEUEING EXCEEDS USER-SPECIFIED MAXIMUM LIMIT

----- SITE BREAKDOWN DELAYS -----	
BREAKDOWN DURATION (MINS)	0
RANGE OF QUEUE DELAY - MIN (VEH-H) MAX	0.0
AV BREAKDOWNS PER DAY	0.00
AV QUEUE DELAY/DAY (VEH-H)	0.0
AV TOTAL DELAY/DAY (VEH-H)	0.0

----- SITE ACCIDENT DELAYS -----	
BREAKDOWN DURATION (MINS)	0
RANGE OF QUEUE DELAY - MIN (VEH-H) MAX	0
AV BREAKDOWNS PER DAY	0
AV QUEUE DELAY/DAY (VEH-H)	0
AV TOTAL DELAY/DAY (VEH-H)	0

AVERAGE ACCIDENT NUMBERS (PIA/DAY)	
MAIN ROUTE WITHOUT WORKS	0.0177
MAIN ROUTE WITH WORKS	0.0166
'DIVERSION'	0.0014

PIA: Personal Injury Accidents

ECONOMIC IMPACT ON ROAD USERS	
ROAD USER COSTS PER DAY	\$20,778
CONGESTED HOURS PER DAY*	3

*Delays Exceeding User-Specified Maximum

**STH 172: STH 57 TO IH 43 (BROWN COUNTY)
OFF-PEAK DAY CLOSURE
NO DIVERSION ROUTE (MAX QUEUE METHOD)**

AUGUST
Analyzed for 2009
Construction Season

GRAPHICAL REPRESENTATION OF TRAFFIC MODEL INPUT AND OUTPUT
MON-THUR EASTBOUND DIRECTION

