

IH 43: STH 54/57 TO STH 172 (BROWN COUNTY) OFF-PEAK DAY CLOSURE NO DIVERSION ROUTE (MAX QUEUE METHOD)	OCTOBER
	Analyzed for 2009 Construction Season

SUMMARY OF TRAFFIC MODEL OUTPUT

MON-THUR SOUTHBOUND DIRECTION

TIME OF DAY	FLOWS AND CAPACITY IN VEH/HR						AVERAGE SPEEDS IN MPH				
	MAIN ROUTE		SITE CAPA CITY	FLOW		AV.DEL PER VEH (MINS)	AVERAGE QUEUE (VEH)	MAIN ROUTE		SITE	
	DEMAND FLOW	PCT HEAVY		MAIN ROUTE	'DIVER TED'			WITHOUT WORK ZONE	WITH WORK ZONE		
MID-1 AM	91	0.0	OFF	91	0	0.00	0	66.2	66.2	66.2	
1-2 AM	62	0.0	OFF	62	0	0.00	0	66.3	66.3	66.3	
2-3 AM	71	0.0	OFF	71	0	0.00	0	66.3	66.3	66.3	
3-4 AM	107	0.0	OFF	107	0	0.00	0	66.2	66.2	66.2	
4-5 AM	269	0.0	OFF	269	0	0.00	0	65.9	65.9	65.9	
5-6 AM	789	0.0	OFF	789	0	0.00	0	64.9	64.9	64.9	
6-7 AM	1612	0.0	OFF	1612	0	0.00	0	63.4	63.4	63.4	
7-8 AM	2202	0.0	OFF	2202	0	0.00	0	62.3	62.3	62.3	
8-9 AM	1527	0.0	OFF	1527	0	0.00	0	63.5	63.5	63.5	
9-10 AM	1251	0.0	OFF	1251	0	0.00	0	64.0	64.0	64.0	
10-11 AM	1309	0.0	1500	1309	0	0.78	0	64.0	55.0	35.3	
11AM-NOON	1383	0.0	1500	1383	0	0.87	0	63.8	54.0	33.3	
NOON-1PM	1465	0.0	1500	1465	0	0.98	0	63.7	52.9	31.5	
1-2 PM	1440	0.0	1499	1440	0	0.95	0	63.7	53.2	32.0	
2-3 PM	1583	0.0	1499	1583	0	2.06	30	63.5	44.5	30.8	
3-4 PM	1797	0.0	OFF	1797	0	0.04	1	63.0	62.6	62.6	
4-5 PM	2068	0.0	OFF	2068	0	0.00	0	62.5	62.5	62.5	
5-6 PM	1898	0.0	OFF	1898	0	0.00	0	62.8	62.8	62.8	
6-7 PM	1308	0.0	OFF	1308	0	0.00	0	64.0	64.0	64.0	
7-8 PM	908	0.0	OFF	908	0	0.00	0	64.7	64.7	64.7	
8-9 PM	677	0.0	OFF	677	0	0.00	0	65.1	65.1	65.1	
9-10 PM	498	0.0	OFF	498	0	0.00	0	65.5	65.5	65.5	
10-11 PM	322	0.0	OFF	322	0	0.00	0	65.8	65.8	65.8	
11PM-MID	183	0.0	OFF	183	0	0.00	0	66.1	66.1	66.1	

"OFF" INDICATES NO ROAD WORK (ALL LANES OPEN TO TRAFFIC)

----- SITE BREAKDOWN DELAYS -----	
BREAKDOWN DURATION (MINS)	0
RANGE OF QUEUE DELAY - MIN (VEH-H) MAX	0.0
AV BREAKDOWNS PER DAY	0.00
AV QUEUE DELAY/DAY (VEH-H)	0.0
AV TOTAL DELAY/DAY (VEH-H)	0.0

----- SITE ACCIDENT DELAYS -----	
BREAKDOWN DURATION (MINS)	0
RANGE OF QUEUE DELAY - MIN (VEH-H) MAX	0
AV BREAKDOWNS PER DAY	0
AV QUEUE DELAY/DAY (VEH-H)	0
AV TOTAL DELAY/DAY (VEH-H)	0

AVERAGE ACCIDENT NUMBERS (PIA/DAY)	
MAIN ROUTE WITHOUT WORKS	0.0202
MAIN ROUTE WITH WORKS	0.0197
'DIVERSION'	0.0000
<small>PIA: Personal Injury Accidents</small>	
IMPACTS ON ROAD USERS	
ROAD USER COSTS PER DAY	\$1,714
CONGESTED HOURS PER DAY*	0

*Delays Exceeding User-Specified Maximum

**IH 43: STH 54/57 TO STH 172 (BROWN COUNTY)
OFF-PEAK DAY CLOSURE
NO DIVERSION ROUTE (MAX QUEUE METHOD)**

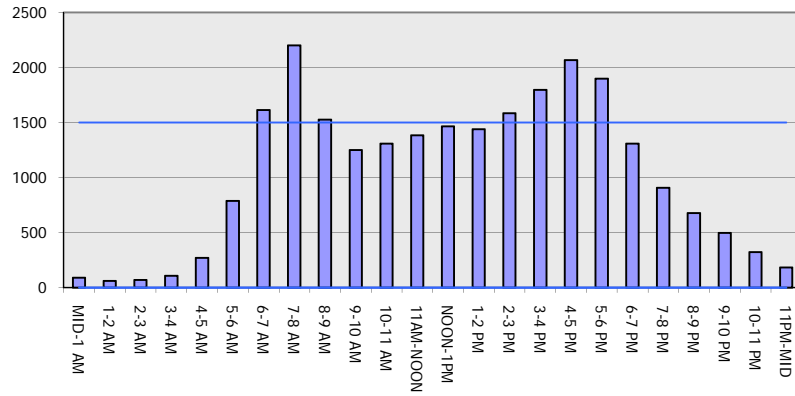
OCTOBER

Analyzed for 2009
Construction Season

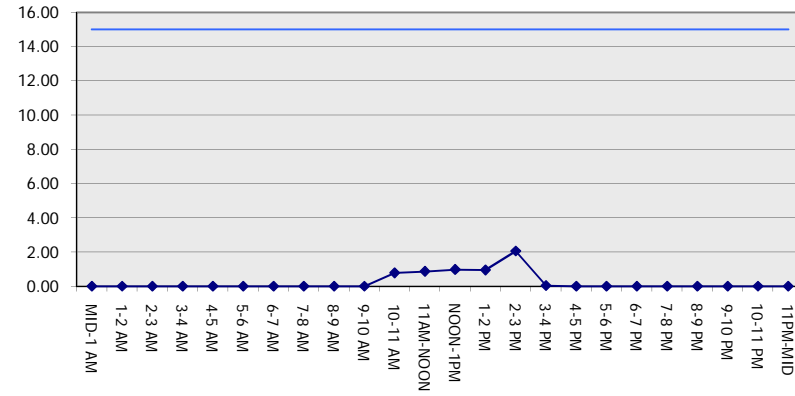
GRAPHICAL REPRESENTATION OF TRAFFIC MODEL INPUT AND OUTPUT

MON-THUR SOUTHBOUND DIRECTION

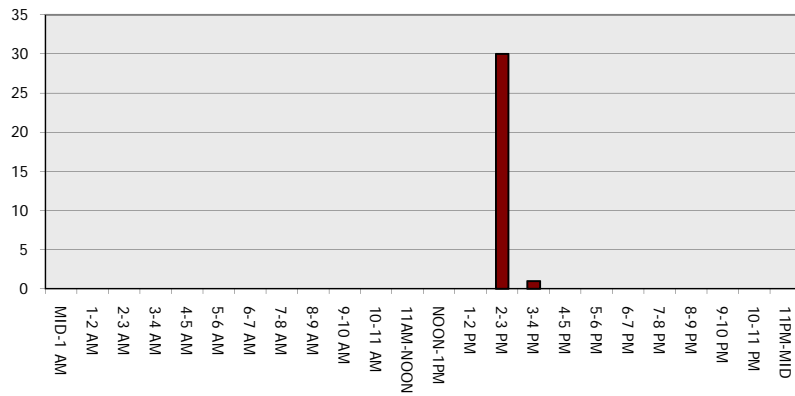
Main Route - Traffic Demand (Vehicles Per Hour)



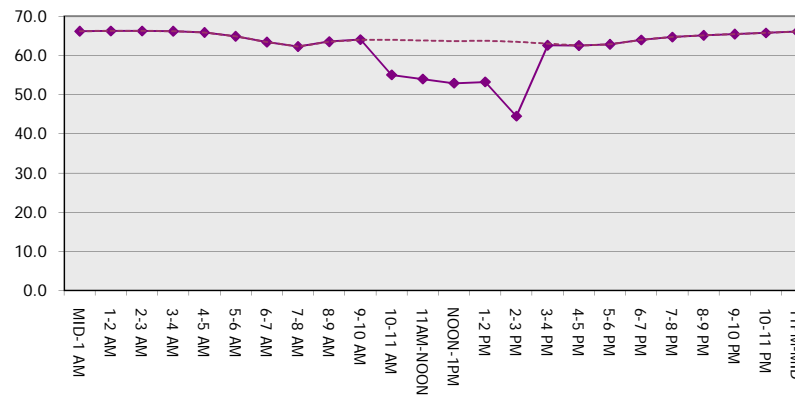
Main Route Average Delay Per Vehicle (Minutes)



Main Route - Average Queue Length (Vehicles)



Main Route - Average Speed (MPH)



IH 43: STH 54/57 TO STH 172 (BROWN COUNTY) OFF-PEAK DAY CLOSURE NO DIVERSION ROUTE (MAX QUEUE METHOD)	OCTOBER
	Analyzed for 2009 Construction Season

SUMMARY OF TRAFFIC MODEL OUTPUT

MON-THUR NORTHBOUND DIRECTION

TIME OF DAY	FLOWS AND CAPACITY IN VEH/HR							AVERAGE SPEEDS IN MPH		
	MAIN ROUTE		SITE CAPA CITY	FLOW		AV.DEL PER VEH (MINS)	AVERAGE QUEUE (VEH)	MAIN ROUTE		SITE
	DEMAND FLOW	PCT HEAVY		MAIN ROUTE	'DIVER TED'			WITHOUT WORK ZONE	WITH WORK ZONE	
MID-1 AM	143	0.0	OFF	143	0	0.00	0	66.1	66.1	66.1
1-2 AM	89	0.0	OFF	89	0	0.00	0	66.2	66.2	66.2
2-3 AM	70	0.0	OFF	70	0	0.00	0	66.3	66.3	66.3
3-4 AM	67	0.0	OFF	67	0	0.00	0	66.3	66.3	66.3
4-5 AM	138	0.0	OFF	138	0	0.00	0	66.1	66.1	66.1
5-6 AM	373	0.0	OFF	373	0	0.00	0	65.7	65.7	65.7
6-7 AM	880	0.0	OFF	880	0	0.00	0	64.8	64.8	64.8
7-8 AM	1477	0.0	OFF	1477	0	0.00	0	63.7	63.7	63.7
8-9 AM	1282	0.0	OFF	1282	0	0.00	0	64.0	64.0	64.0
9-10 AM	1084	0.0	OFF	1084	0	0.00	0	64.3	64.3	64.3
10-11 AM	1087	0.0	1500	1087	0	0.53	0	64.3	57.9	41.4
11AM-NOON	1110	0.0	1500	1110	0	0.53	0	64.3	57.9	41.3
NOON-1PM	1215	0.0	1500	1215	0	0.66	0	64.1	56.4	38.0
1-2 PM	1279	0.0	1499	1279	0	0.74	0	64.0	55.5	36.1
2-3 PM	1427	0.0	1499	1427	0	0.94	0	63.7	53.3	32.5
3-4 PM	1876	0.0	OFF	1876	0	0.00	0	62.9	62.9	62.9
4-5 PM	2322	0.0	OFF	2322	0	0.00	0	62.0	62.0	62.0
5-6 PM	2242	0.0	OFF	2242	0	0.00	0	62.2	62.2	62.2
6-7 PM	1452	0.0	OFF	1452	0	0.00	0	63.7	63.7	63.7
7-8 PM	935	0.0	OFF	935	0	0.00	0	64.6	64.6	64.6
8-9 PM	774	0.0	OFF	774	0	0.00	0	65.0	65.0	65.0
9-10 PM	670	0.0	OFF	670	0	0.00	0	65.1	65.1	65.1
10-11 PM	448	0.0	OFF	448	0	0.00	0	65.6	65.6	65.6
11PM-MID	293	0.0	OFF	293	0	0.00	0	65.8	65.8	65.8

"OFF" INDICATES NO ROAD WORK (ALL LANES OPEN TO TRAFFIC)

----- SITE BREAKDOWN DELAYS -----	
BREAKDOWN DURATION (MINS)	0
RANGE OF QUEUE DELAY - MIN (VEH-H) MAX	0.0
AV BREAKDOWNS PER DAY	0.00
AV QUEUE DELAY/DAY (VEH-H)	0.0
AV TOTAL DELAY/DAY (VEH-H)	0.0

----- SITE ACCIDENT DELAYS -----	
BREAKDOWN DURATION (MINS)	0
RANGE OF QUEUE DELAY - MIN (VEH-H) MAX	0
AV BREAKDOWNS PER DAY	0
AV QUEUE DELAY/DAY (VEH-H)	0
AV TOTAL DELAY/DAY (VEH-H)	0

AVERAGE ACCIDENT NUMBERS (PIA/DAY)	
MAIN ROUTE WITHOUT WORKS	0.0185
MAIN ROUTE WITH WORKS	0.0181
'DIVERSION'	0.0000

PIA: Personal Injury Accidents

ECONOMIC IMPACT ON ROAD USERS	
ROAD USER COSTS PER DAY	\$872
CONGESTED HOURS PER DAY*	0

*Delays Exceeding User-Specified Maximum

**IH 43: STH 54/57 TO STH 172 (BROWN COUNTY)
OFF-PEAK DAY CLOSURE
NO DIVERSION ROUTE (MAX QUEUE METHOD)**

OCTOBER

Analyzed for 2009
Construction Season

**GRAPHICAL REPRESENTATION OF TRAFFIC MODEL INPUT AND OUTPUT
MON-THUR NORTHBOUND DIRECTION**

