

IH 43: USH 41 TO STH 54/57 (BROWN COUNTY) OFF-PEAK DAY CLOSURE NO DIVERSION ROUTE (MAX QUEUE METHOD)	AUGUST
	Analyzed for 2009 Construction Season

SUMMARY OF TRAFFIC MODEL OUTPUT

FRIDAY SOUTHBOUND DIRECTION

TIME OF DAY	FLOWS AND CAPACITY IN VEH/HR						AVERAGE SPEEDS IN MPH				
	MAIN ROUTE		SITE CAPA CITY	FLOW		AV.DEL PER VEH (MINS)	AVERAGE QUEUE (VEH)	MAIN ROUTE		SITE	
	DEMAND FLOW	PCT HEAVY		MAIN ROUTE	'DIVER TED'			WITHOUT WORK ZONE	WITH WORK ZONE		
MID-1 AM	146	0.0	OFF	146	0	0.00	0	66.1	66.1	66.1	
1-2 AM	95	0.0	OFF	95	0	0.00	0	66.2	66.2	66.2	
2-3 AM	101	0.0	OFF	101	0	0.00	0	66.2	66.2	66.2	
3-4 AM	106	0.0	OFF	106	0	0.00	0	66.2	66.2	66.2	
4-5 AM	271	0.0	OFF	271	0	0.00	0	65.9	65.9	65.9	
5-6 AM	724	0.0	OFF	724	0	0.00	0	65.0	65.0	65.0	
6-7 AM	1174	0.0	OFF	1174	0	0.00	0	64.2	64.2	64.2	
7-8 AM	1466	0.0	OFF	1466	0	0.00	0	63.7	63.7	63.7	
8-9 AM	1151	0.0	OFF	1151	0	0.00	0	64.2	64.2	64.2	
9-10 AM	1072	0.0	OFF	1072	0	0.00	0	64.4	64.4	64.4	
10-11 AM	1229	0.0	1500	1229	0	0.67	0	64.1	57.1	37.6	
11AM-NOON	1332	0.0	1500	1332	0	0.81	0	63.9	55.8	34.7	
NOON-1PM	1359	0.0	1499	1359	0	0.84	0	63.8	55.5	34.0	
1-2 PM	1482	0.0	1499	1482	0	1.03	0	63.7	53.7	31.2	
2-3 PM	1563	0.0	1500	1563	0	2.03	28	63.5	46.5	30.8	
3-4 PM	1690	0.0	OFF	1690	0	0.03	0	63.2	63.0	63.0	
4-5 PM	1760	0.0	OFF	1760	0	0.00	0	63.1	63.1	63.1	
5-6 PM	1730	0.0	OFF	1730	0	0.00	0	63.2	63.2	63.2	
6-7 PM	1272	0.0	OFF	1272	0	0.00	0	64.0	64.0	64.0	
7-8 PM	809	0.0	OFF	809	0	0.00	0	64.9	64.9	64.9	
8-9 PM	698	0.0	OFF	698	0	0.00	0	65.1	65.1	65.1	
9-10 PM	548	0.0	OFF	548	0	0.00	0	65.4	65.4	65.4	
10-11 PM	440	0.0	OFF	440	0	0.00	0	65.6	65.6	65.6	
11PM-MID	282	0.0	OFF	282	0	0.00	0	65.9	65.9	65.9	

"OFF" INDICATES NO ROAD WORK (ALL LANES OPEN TO TRAFFIC)

----- SITE BREAKDOWN DELAYS -----	
BREAKDOWN DURATION (MINS)	0
RANGE OF QUEUE DELAY - MIN (VEH-H) MAX	0.0
AV BREAKDOWNS PER DAY	0.00
AV QUEUE DELAY/DAY (VEH-H)	0.0
AV TOTAL DELAY/DAY (VEH-H)	0.0

----- SITE ACCIDENT DELAYS -----	
BREAKDOWN DURATION (MINS)	0
RANGE OF QUEUE DELAY - MIN (VEH-H) MAX	0
AV BREAKDOWNS PER DAY	0
AV QUEUE DELAY/DAY (VEH-H)	0
AV TOTAL DELAY/DAY (VEH-H)	0

AVERAGE ACCIDENT NUMBERS (PIA/DAY)	
MAIN ROUTE WITHOUT WORKS	0.0211
MAIN ROUTE WITH WORKS	0.0207
'DIVERSION'	0.0000
<small>PIA: Personal Injury Accidents</small>	
IMPACTS ON ROAD USERS	
ROAD USER COSTS PER DAY	\$1,433
CONGESTED HOURS PER DAY*	0

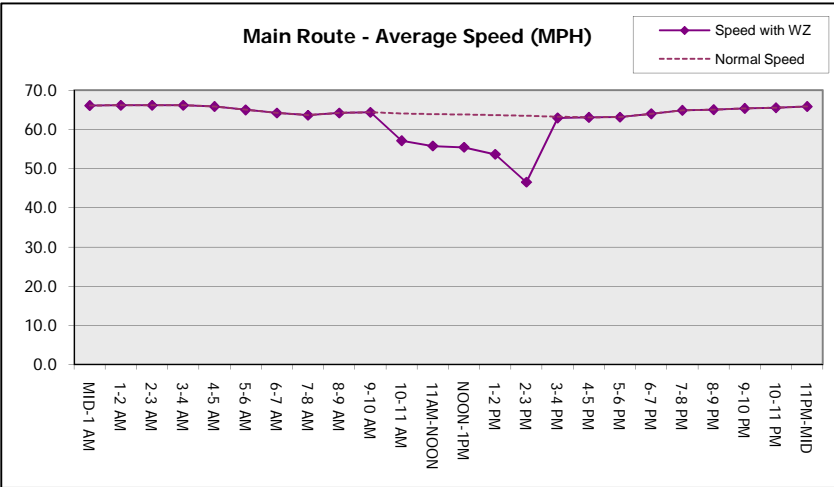
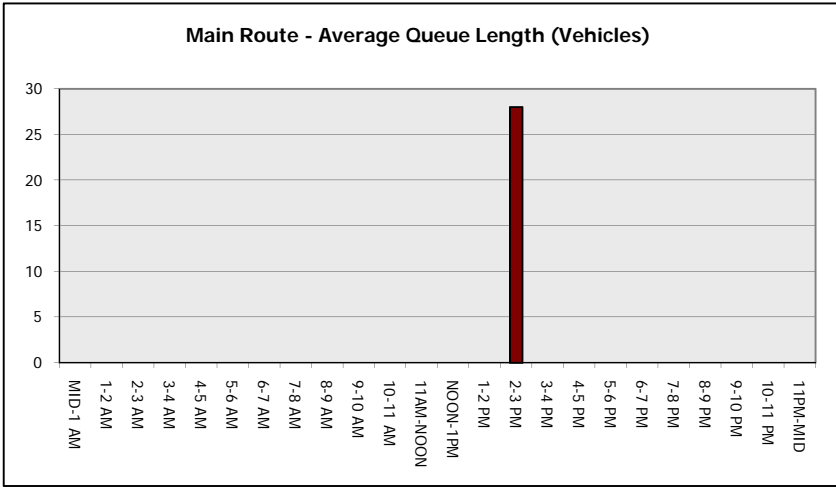
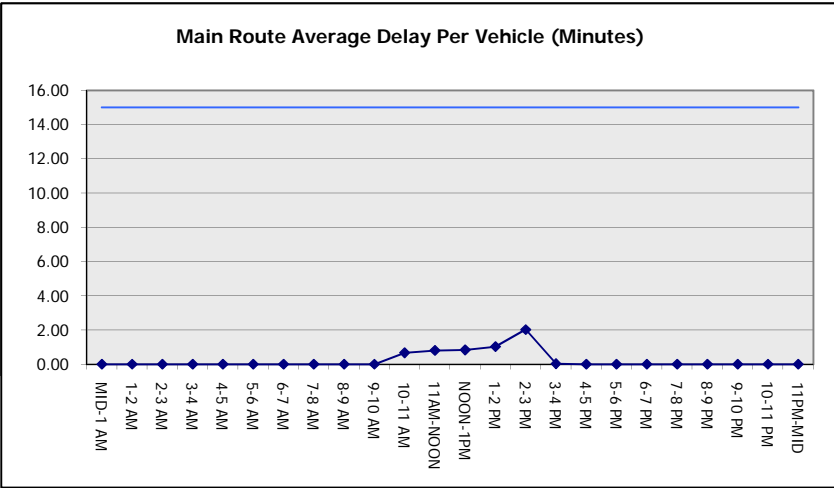
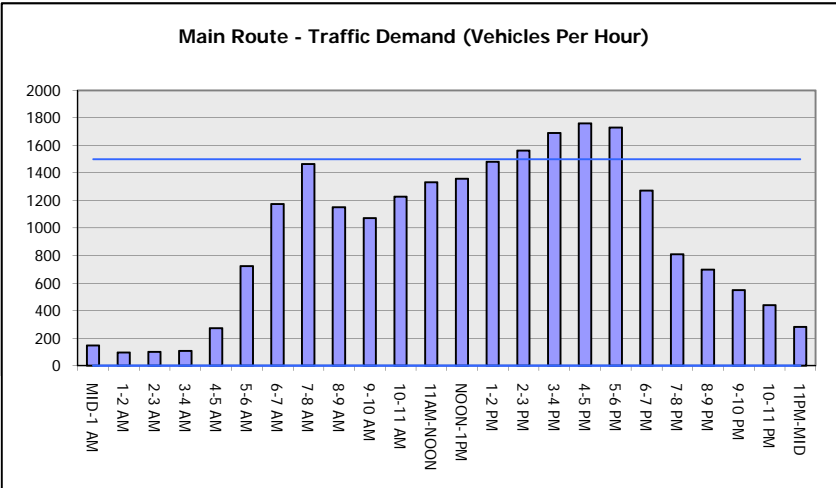
*Delays Exceeding User-Specified Maximum

**IH 43: USH 41 TO STH 54/57 (BROWN COUNTY)
OFF-PEAK DAY CLOSURE
NO DIVERSION ROUTE (MAX QUEUE METHOD)**

AUGUST
Analyzed for 2009
Construction Season

GRAPHICAL REPRESENTATION OF TRAFFIC MODEL INPUT AND OUTPUT

FRIDAY SOUTHBOUND DIRECTION



IH 43: USH 41 TO STH 54/57 (BROWN COUNTY) OFF-PEAK DAY CLOSURE NO DIVERSION ROUTE (MAX QUEUE METHOD)	AUGUST
	Analyzed for 2009 Construction Season

SUMMARY OF TRAFFIC MODEL OUTPUT

FRIDAY NORTHBOUND DIRECTION

TIME OF DAY	FLOWS AND CAPACITY IN VEH/HR							AVERAGE SPEEDS IN MPH			
	MAIN ROUTE		SITE CAPA CITY	FLOW		AV.DEL PER VEH (MINS)	AVERAGE QUEUE (VEH)	MAIN ROUTE		SITE	
	DEMAND FLOW	PCT HEAVY		MAIN ROUTE	'DIVER TED'			WITHOUT WORK ZONE	WITH WORK ZONE		
MID-1 AM	160	0.0	OFF	160	0	0.00	0	66.1	66.1	66.1	
1-2 AM	118	0.0	OFF	118	0	0.00	0	66.1	66.1	66.1	
2-3 AM	101	0.0	OFF	101	0	0.00	0	66.2	66.2	66.2	
3-4 AM	117	0.0	OFF	117	0	0.00	0	66.1	66.1	66.1	
4-5 AM	229	0.0	OFF	229	0	0.00	0	66.0	66.0	66.0	
5-6 AM	546	0.0	OFF	546	0	0.00	0	65.4	65.4	65.4	
6-7 AM	1126	0.0	OFF	1126	0	0.00	0	64.3	64.3	64.3	
7-8 AM	1369	0.0	OFF	1369	0	0.00	0	63.8	63.8	63.8	
8-9 AM	1124	0.0	OFF	1124	0	0.00	0	64.3	64.3	64.3	
9-10 AM	1119	0.0	OFF	1119	0	0.00	0	64.3	64.3	64.3	
10-11 AM	1288	0.0	1500	1288	0	0.75	0	64.0	56.3	35.8	
11AM-NOON	1398	0.0	1499	1398	0	0.89	0	63.8	55.0	33.0	
NOON-1PM	1546	0.0	1499	1546	0	1.50	13	63.5	50.1	30.8	
1-2 PM	1702	0.0	1500	1702	0	5.65	134	63.2	31.5	30.8	
2-3 PM	1951	0.0	1500	1698	253	14.66+	373	62.7	17.5	30.8	
3-4 PM	2145	0.0	OFF	2145	0	1.03	53	62.4	52.8	52.8	
4-5 PM	2302	0.0	OFF	2302	0	0.00	0	62.1	62.1	62.1	
5-6 PM	2174	0.0	OFF	2174	0	0.00	0	62.3	62.3	62.3	
6-7 PM	1575	0.0	OFF	1575	0	0.00	0	63.5	63.5	63.5	
7-8 PM	1121	0.0	OFF	1121	0	0.00	0	64.3	64.3	64.3	
8-9 PM	874	0.0	OFF	874	0	0.00	0	64.8	64.8	64.8	
9-10 PM	729	0.0	OFF	729	0	0.00	0	65.0	65.0	65.0	
10-11 PM	615	0.0	OFF	615	0	0.00	0	65.3	65.3	65.3	
11PM-MID	428	0.0	OFF	428	0	0.00	0	65.6	65.6	65.6	

"OFF" INDICATES NO ROAD WORK (ALL LANES OPEN TO TRAFFIC)

+ INDICATES QUEUEING EXCEEDS USER-SPECIFIED MAXIMUM LIMIT

----- SITE BREAKDOWN DELAYS -----	
BREAKDOWN DURATION (MINS)	0
RANGE OF QUEUE DELAY - MIN	0.0
(VEH-H) MAX	0.0
AV BREAKDOWNS PER DAY	0.00
AV QUEUE DELAY/DAY (VEH-H)	0.0
AV TOTAL DELAY/DAY (VEH-H)	0.0

----- SITE ACCIDENT DELAYS -----	
BREAKDOWN DURATION (MINS)	0
RANGE OF QUEUE DELAY - MIN	0
(VEH-H) MAX	0
AV BREAKDOWNS PER DAY	0
AV QUEUE DELAY/DAY (VEH-H)	0
AV TOTAL DELAY/DAY (VEH-H)	0

AVERAGE ACCIDENT NUMBERS (PIA/DAY)	
MAIN ROUTE WITHOUT WORKS	0.0243
MAIN ROUTE WITH WORKS	0.0235
'DIVERSION'	0.0006

PIA: Personal Injury Accidents

ECONOMIC IMPACT ON ROAD USERS	
ROAD USER COSTS PER DAY	\$8,264
CONGESTED HOURS PER DAY*	1

*Delays Exceeding User-Specified Maximum

**IH 43: USH 41 TO STH 54/57 (BROWN COUNTY)
OFF-PEAK DAY CLOSURE
NO DIVERSION ROUTE (MAX QUEUE METHOD)**

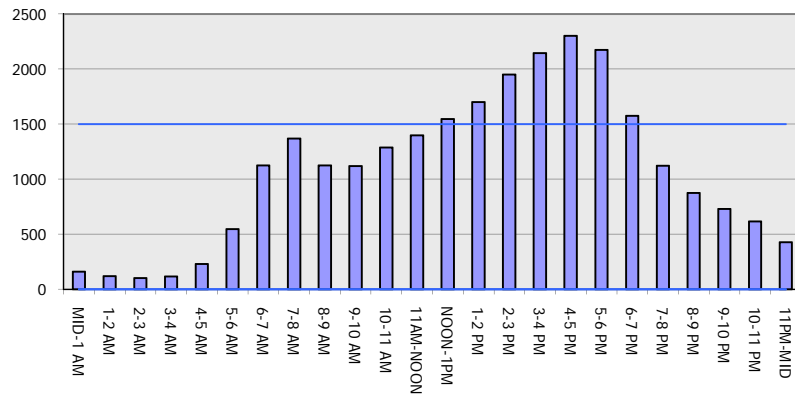
AUGUST

Analyzed for 2009
Construction Season

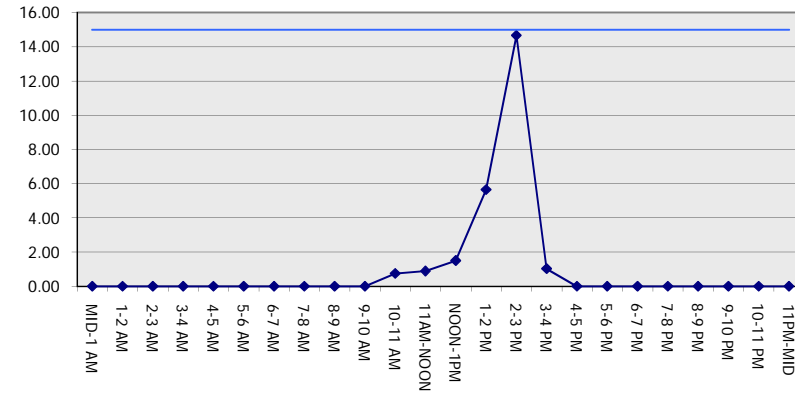
GRAPHICAL REPRESENTATION OF TRAFFIC MODEL INPUT AND OUTPUT

FRIDAY NORTHBOUND DIRECTION

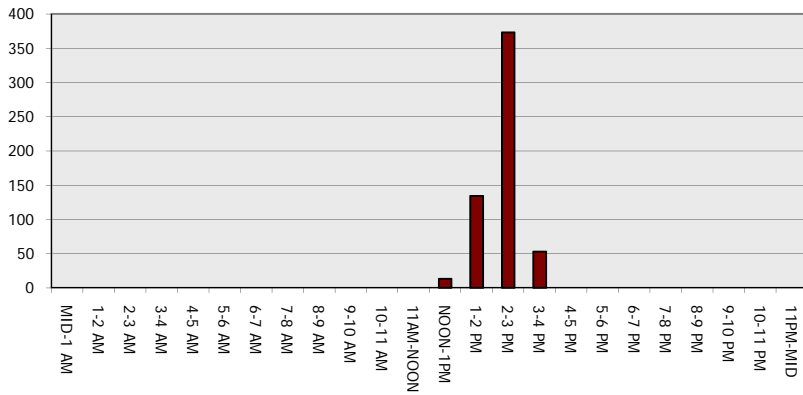
Main Route - Traffic Demand (Vehicles Per Hour)



Main Route Average Delay Per Vehicle (Minutes)



Main Route - Average Queue Length (Vehicles)



Main Route - Average Speed (MPH)

