

<b>USH 41: IH 43 TO STH 29 (BROWN COUNTY)                  OFF-PEAK DAY CLOSURE                  NO DIVERSION ROUTE (MAX QUEUE METHOD)</b>	<b>OCTOBER</b>
	Analyzed for 2009 Construction Season

**SUMMARY OF TRAFFIC MODEL OUTPUT**

SUNDAY SOUTHBOUND DIRECTION

TIME OF DAY	FLOWS AND CAPACITY IN VEH/HR						AVERAGE SPEEDS IN MPH			
	MAIN ROUTE		SITE CAPA CITY	FLOW		AV.DEL PER VEH (MINS)	AVERAGE QUEUE (VEH)	MAIN ROUTE		SITE
	DEMAND FLOW	PCT HEAVY		MAIN ROUTE	'DIVER TED'			WITHOUT WORK ZONE	WITH WORK ZONE	
MID-1 AM	238	0.0	OFF	238	0	0.00	0	66.0	66.0	66.0
1-2 AM	157	0.0	OFF	157	0	0.00	0	66.1	66.1	66.1
2-3 AM	141	0.0	OFF	141	0	0.00	0	66.1	66.1	66.1
3-4 AM	91	0.0	OFF	91	0	0.00	0	66.2	66.2	66.2
4-5 AM	132	0.0	OFF	132	0	0.00	0	66.1	66.1	66.1
5-6 AM	294	0.0	OFF	294	0	0.00	0	65.8	65.8	65.8
6-7 AM	359	0.0	OFF	359	0	0.00	0	65.7	65.7	65.7
7-8 AM	625	0.0	OFF	625	0	0.00	0	65.2	65.2	65.2
8-9 AM	1038	0.0	OFF	1038	0	0.00	0	64.5	64.5	64.5
9-10 AM	1824	0.0	1499	1824	0	4.55	127	63.0	19.2	30.8
10-11 AM	2154	0.0	1499	1583	571	16.57+	421	62.3	8.8	30.8
11AM-NOON	2184	0.0	1500	1504	680	16.90+	429	62.3	8.7	30.8
NOON-1PM	2111	0.0	1500	1503	608	16.90+	429	62.5	8.7	30.8
1-2 PM	2117	0.0	1500	1503	614	16.90+	429	62.4	8.7	30.8
2-3 PM	2216	0.0	1500	1502	714	16.90+	429	62.3	8.7	30.8
3-4 PM	2061	0.0	1500	1502	559	16.89+	429	62.5	8.7	30.8
4-5 PM	2041	0.0	1500	1501	539	16.89+	429	62.6	8.7	30.8
5-6 PM	1723	0.0	1500	1501	222	16.89+	428	63.2	8.7	30.8
6-7 PM	1328	0.0	1499	1328	0	14.37+	363	63.9	9.4	30.8
7-8 PM	881	0.0	OFF	881	0	0.16	10	64.8	59.4	59.4
8-9 PM	632	0.0	OFF	632	0	0.00	0	65.2	65.2	65.2
9-10 PM	455	0.0	OFF	455	0	0.00	0	65.5	65.5	65.5
10-11 PM	308	0.0	OFF	308	0	0.00	0	65.8	65.8	65.8
11PM-MID	217	0.0	OFF	217	0	0.00	0	66.0	66.0	66.0

"OFF" INDICATES NO ROAD WORK (ALL LANES OPEN TO TRAFFIC)

+ INDICATES QUEUEING EXCEEDS USER-SPECIFIED MAXIMUM LIMIT

*----- SITE BREAKDOWN DELAYS -----*	
BREAKDOWN DURATION (MINS)	0
RANGE OF QUEUE DELAY - MIN (VEH-H) MAX	0.0
AV BREAKDOWNS PER DAY	0.00
AV QUEUE DELAY/DAY (VEH-H)	0.0
AV TOTAL DELAY/DAY (VEH-H)	0.0

*----- SITE ACCIDENT DELAYS -----*	
BREAKDOWN DURATION (MINS)	0
RANGE OF QUEUE DELAY - MIN (VEH-H) MAX	0
AV BREAKDOWNS PER DAY	0
AV QUEUE DELAY/DAY (VEH-H)	0
AV TOTAL DELAY/DAY (VEH-H)	0

AVERAGE ACCIDENT NUMBERS (PIA/DAY)	
MAIN ROUTE WITHOUT WORKS	0.0081
MAIN ROUTE WITH WORKS	0.0056
'DIVERSION'	0.0033
PIA: Personal Injury Accidents	
IMPACTS ON ROAD USERS	
ROAD USER COSTS PER DAY	\$86,392
CONGESTED HOURS PER DAY*	9

\*Delays Exceeding User-Specified Maximum

**USH 41: IH 43 TO STH 29 (BROWN COUNTY)  
OFF-PEAK DAY CLOSURE  
NO DIVERSION ROUTE (MAX QUEUE METHOD)**

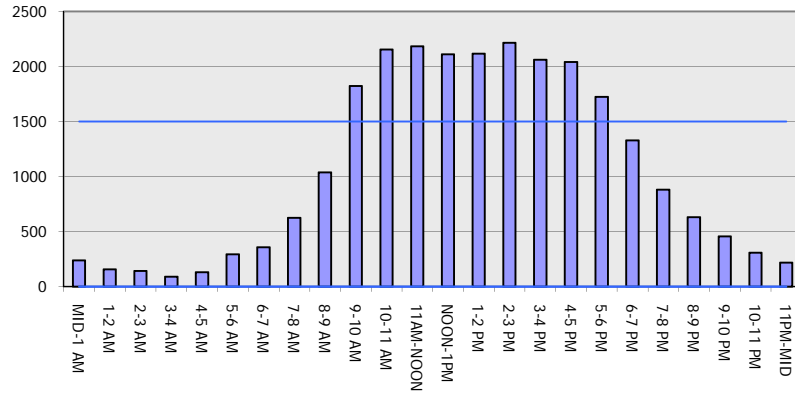
**OCTOBER**

Analyzed for 2009  
Construction Season

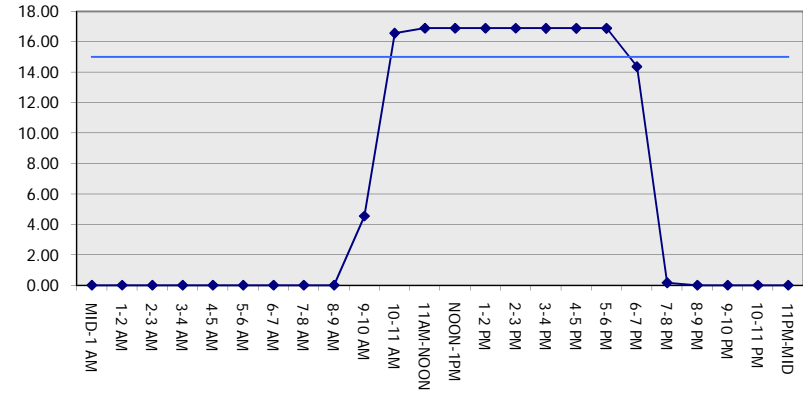
**GRAPHICAL REPRESENTATION OF TRAFFIC MODEL INPUT AND OUTPUT**

**SUNDAY SOUTHBOUND DIRECTION**

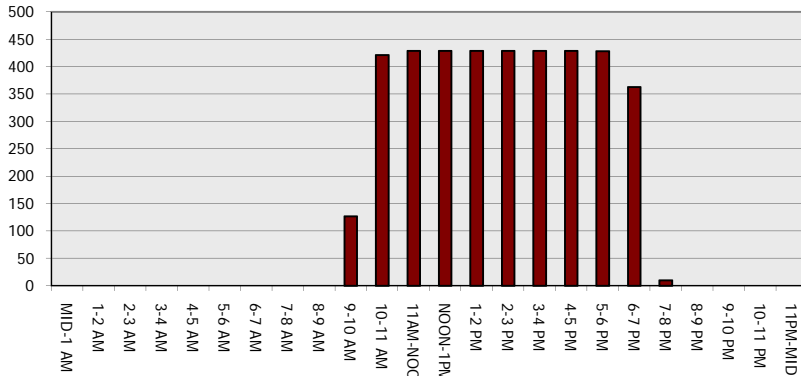
**Main Route - Traffic Demand (Vehicles Per Hour)**



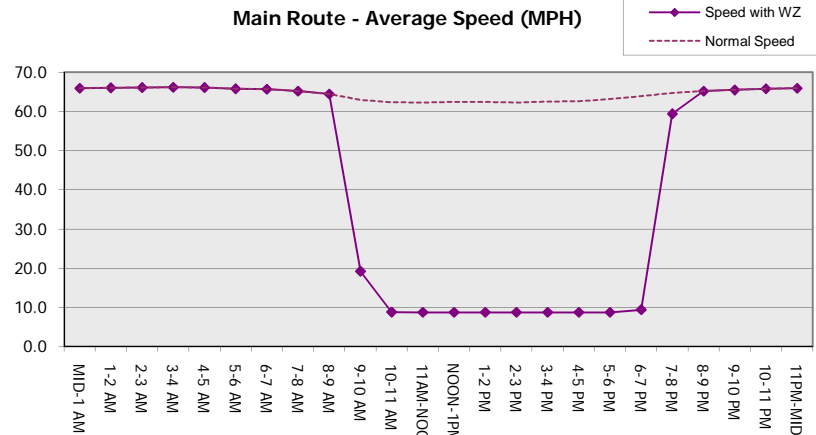
**Main Route Average Delay Per Vehicle (Minutes)**



**Main Route - Average Queue Length (Vehicles)**



**Main Route - Average Speed (MPH)**



<b>USH 41: IH 43 TO STH 29 (BROWN COUNTY)                  OFF-PEAK DAY CLOSURE                  NO DIVERSION ROUTE (MAX QUEUE METHOD)</b>	<b>OCTOBER</b>
	Analyzed for 2009 Construction Season

**SUMMARY OF TRAFFIC MODEL OUTPUT**

SUNDAY NORTHBOUND DIRECTION

TIME OF DAY	FLOWS AND CAPACITY IN VEH/HR						AVERAGE SPEEDS IN MPH			
	MAIN ROUTE		SITE CAPA CITY	FLOW		AV.DEL PER VEH (MINS)	AVERAGE QUEUE (VEH)	MAIN ROUTE		SITE
	DEMAND FLOW	PCT HEAVY		MAIN ROUTE	'DIVER TED'			WITHOUT WORK ZONE	WITH WORK ZONE	
MID-1 AM	364	0.0	OFF	364	0	0.00	0	65.7	65.7	65.7
1-2 AM	202	0.0	OFF	202	0	0.00	0	66.0	66.0	66.0
2-3 AM	170	0.0	OFF	170	0	0.00	0	66.1	66.1	66.1
3-4 AM	111	0.0	OFF	111	0	0.00	0	66.2	66.2	66.2
4-5 AM	145	0.0	OFF	145	0	0.00	0	66.1	66.1	66.1
5-6 AM	206	0.0	OFF	206	0	0.00	0	66.0	66.0	66.0
6-7 AM	300	0.0	OFF	300	0	0.00	0	65.8	65.8	65.8
7-8 AM	377	0.0	OFF	377	0	0.00	0	65.7	65.7	65.7
8-9 AM	565	0.0	OFF	565	0	0.00	0	65.3	65.3	65.3
9-10 AM	830	0.0	1500	830	0	0.50	0	64.8	51.0	42.3
10-11 AM	1183	0.0	1499	1183	0	0.62	0	64.2	48.2	38.9
11AM-NOON	1498	0.0	1499	1498	0	1.19	5	63.6	39.1	31.4
NOON-1PM	1580	0.0	1500	1580	0	3.30	64	63.5	23.1	30.8
1-2 PM	1467	0.0	1499	1467	0	4.21	86	63.7	19.7	30.8
2-3 PM	1589	0.0	1500	1589	0	4.79	104	63.4	17.9	30.8
3-4 PM	1785	0.0	1500	1785	0	11.63+	297	63.0	10.5	30.8
4-5 PM	1730	0.0	1499	1497	233	16.89+	428	63.2	8.7	30.8
5-6 PM	1584	0.0	1499	1480	104	16.81+	426	63.4	8.8	30.8
6-7 PM	1249	0.0	1499	1249	0	12.47+	317	64.1	10.1	31.2
7-8 PM	871	0.0	OFF	871	0	0.08	4	64.8	62.1	62.1
8-9 PM	588	0.0	OFF	588	0	0.00	0	65.3	65.3	65.3
9-10 PM	483	0.0	OFF	483	0	0.00	0	65.5	65.5	65.5
10-11 PM	416	0.0	OFF	416	0	0.00	0	65.6	65.6	65.6
11PM-MID	882	0.0	OFF	882	0	0.00	0	64.8	64.8	64.8

"OFF" INDICATES NO ROAD WORK (ALL LANES OPEN TO TRAFFIC)

+ INDICATES QUEUEING EXCEEDS USER-SPECIFIED MAXIMUM LIMIT

BREAKDOWN DURATION (MINS)	0
RANGE OF QUEUE DELAY - MIN (VEH-H) MAX	0.0
AV BREAKDOWNS PER DAY	0.00
AV QUEUE DELAY/DAY (VEH-H)	0.0
AV TOTAL DELAY/DAY (VEH-H)	0.0

BREAKDOWN DURATION (MINS)	0
RANGE OF QUEUE DELAY - MIN (VEH-H) MAX	0
AV BREAKDOWNS PER DAY	0
AV QUEUE DELAY/DAY (VEH-H)	0
AV TOTAL DELAY/DAY (VEH-H)	0

MAIN ROUTE WITHOUT WORKS	0.0064
MAIN ROUTE WITH WORKS	0.0054
'DIVERSION'	0.0002

PIA: Personal Injury Accidents

ROAD USER COSTS PER DAY	\$32,089
CONGESTED HOURS PER DAY*	4

\*Delays Exceeding User-Specified Maximum

**USH 41: IH 43 TO STH 29 (BROWN COUNTY)  
OFF-PEAK DAY CLOSURE  
NO DIVERSION ROUTE (MAX QUEUE METHOD)**

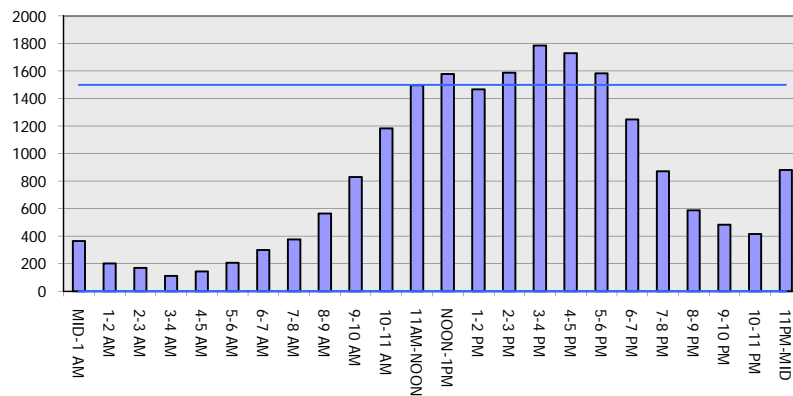
**OCTOBER**

Analyzed for 2009  
Construction Season

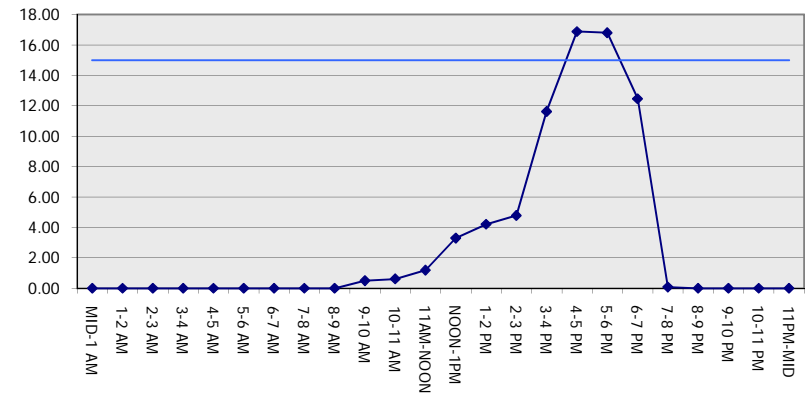
**GRAPHICAL REPRESENTATION OF TRAFFIC MODEL INPUT AND OUTPUT**

**SUNDAY NORTHBOUND DIRECTION**

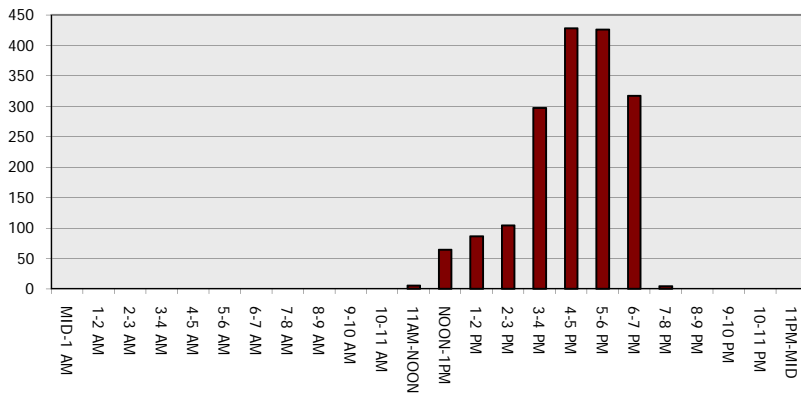
**Main Route - Traffic Demand (Vehicles Per Hour)**



**Main Route Average Delay Per Vehicle (Minutes)**



**Main Route - Average Queue Length (Vehicles)**



**Main Route - Average Speed (MPH)**

