

USH 41: IH 43 TO STH 29 (BROWN COUNTY) OFF-PEAK DAY CLOSURE NO DIVERSION ROUTE (MAX QUEUE METHOD)	OCTOBER
	Analyzed for 2009 Construction Season

SUMMARY OF TRAFFIC MODEL OUTPUT

SATURDAY SOUTHBOUND DIRECTION

TIME OF DAY	FLOWS AND CAPACITY IN VEH/HR						AVERAGE SPEEDS IN MPH				
	MAIN ROUTE		SITE CAPA CITY	FLOW		AV.DEL PER VEH (MINS)	AVERAGE QUEUE (VEH)	MAIN ROUTE		SITE	
	DEMAND FLOW	PCT HEAVY		MAIN ROUTE	'DIVER TED'			WITHOUT WORK ZONE	WITH WORK ZONE		
MID-1 AM	222	0.0	OFF	222	0	0.00	0	66.0	66.0	66.0	
1-2 AM	144	0.0	OFF	144	0	0.00	0	66.1	66.1	66.1	
2-3 AM	152	0.0	OFF	152	0	0.00	0	66.1	66.1	66.1	
3-4 AM	111	0.0	OFF	111	0	0.00	0	66.2	66.2	66.2	
4-5 AM	206	0.0	OFF	206	0	0.00	0	66.0	66.0	66.0	
5-6 AM	426	0.0	OFF	426	0	0.00	0	65.6	65.6	65.6	
6-7 AM	599	0.0	OFF	599	0	0.00	0	65.3	65.3	65.3	
7-8 AM	993	0.0	OFF	993	0	0.00	0	64.5	64.5	64.5	
8-9 AM	1505	0.0	1499	1505	0	1.35	12	63.6	37.0	31.8	
9-10 AM	1784	0.0	1500	1784	0	6.82	175	63.0	14.5	30.8	
10-11 AM	2078	0.0	1499	1570	508	16.62+	422	62.5	8.8	30.8	
11AM-NOON	2061	0.0	1500	1504	556	16.89+	429	62.5	8.7	30.8	
NOON-1PM	1996	0.0	1500	1503	492	16.89+	429	62.7	8.7	30.8	
1-2 PM	1902	0.0	1500	1503	399	16.89+	428	62.8	8.7	30.8	
2-3 PM	1864	0.0	1500	1502	362	16.89+	428	62.9	8.7	30.8	
3-4 PM	1802	0.0	1500	1502	300	16.89+	428	63.0	8.7	30.8	
4-5 PM	1928	0.0	1500	1502	426	16.89+	428	62.8	8.7	30.8	
5-6 PM	1909	0.0	1500	1501	408	16.89+	428	62.8	8.7	30.8	
6-7 PM	1600	0.0	OFF	1600	0	0.58	37	63.4	48.5	48.5	
7-8 PM	1376	0.0	OFF	1376	0	0.00	0	63.8	63.8	63.8	
8-9 PM	1076	0.0	OFF	1076	0	0.00	0	64.4	64.4	64.4	
9-10 PM	758	0.0	OFF	758	0	0.00	0	65.0	65.0	65.0	
10-11 PM	580	0.0	OFF	580	0	0.00	0	65.3	65.3	65.3	
11PM-MID	368	0.0	OFF	368	0	0.00	0	65.7	65.7	65.7	

"OFF" INDICATES NO ROAD WORK (ALL LANES OPEN TO TRAFFIC)

+ INDICATES QUEUEING EXCEEDS USER-SPECIFIED MAXIMUM LIMIT

----- SITE BREAKDOWN DELAYS -----	
BREAKDOWN DURATION (MINS)	0
RANGE OF QUEUE DELAY - MIN	0.0
(VEH-H) MAX	0.0
AV BREAKDOWNS PER DAY	0.00
AV QUEUE DELAY/DAY (VEH-H)	0.0
AV TOTAL DELAY/DAY (VEH-H)	0.0

----- SITE ACCIDENT DELAYS -----	
BREAKDOWN DURATION (MINS)	0
RANGE OF QUEUE DELAY - MIN	0
(VEH-H) MAX	0
AV BREAKDOWNS PER DAY	0
AV QUEUE DELAY/DAY (VEH-H)	0
AV TOTAL DELAY/DAY (VEH-H)	0

AVERAGE ACCIDENT NUMBERS (PIA/DAY)	
MAIN ROUTE WITHOUT WORKS	0.0087
MAIN ROUTE WITH WORKS	0.0066
'DIVERSION'	0.0025
<small>PIA: Personal Injury Accidents</small>	
IMPACTS ON ROAD USERS	
ROAD USER COSTS PER DAY	\$76,013
CONGESTED HOURS PER DAY*	8

*Delays Exceeding User-Specified Maximum

**USH 41: IH 43 TO STH 29 (BROWN COUNTY)
OFF-PEAK DAY CLOSURE
NO DIVERSION ROUTE (MAX QUEUE METHOD)**

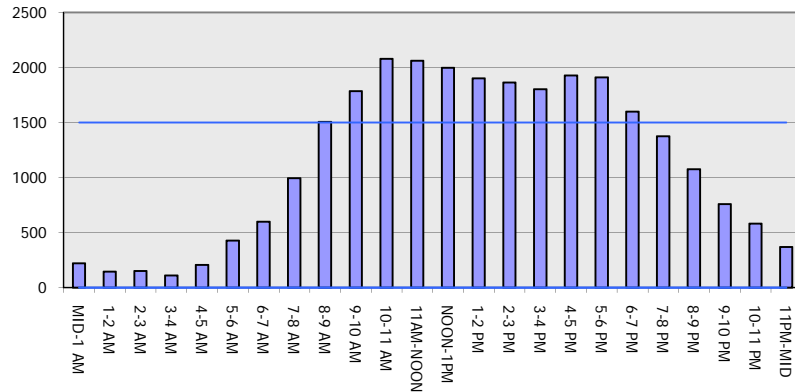
OCTOBER

Analyzed for 2009
Construction Season

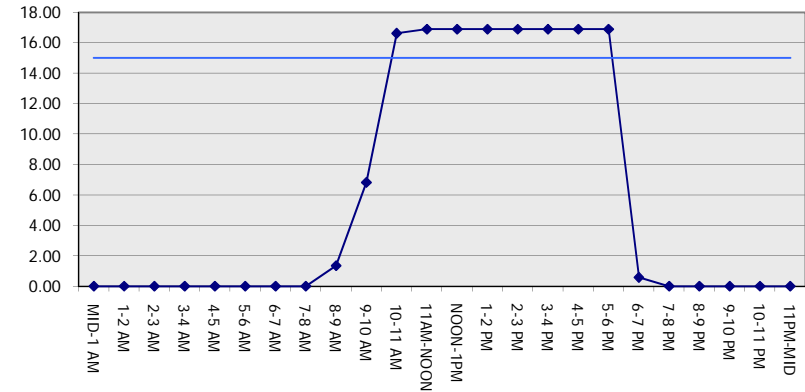
GRAPHICAL REPRESENTATION OF TRAFFIC MODEL INPUT AND OUTPUT

SATURDAY SOUTHBOUND DIRECTION

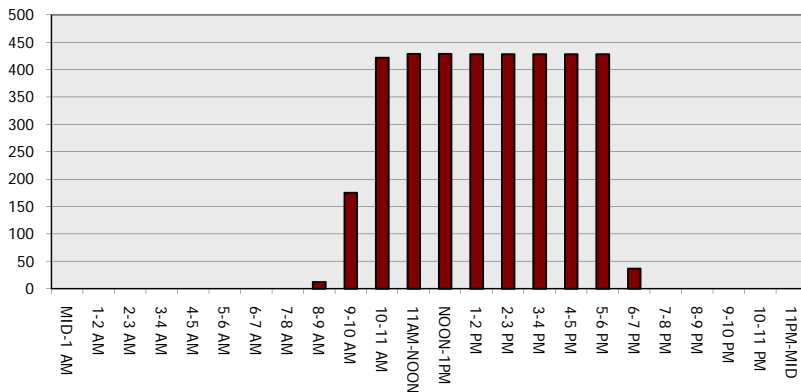
Main Route - Traffic Demand (Vehicles Per Hour)



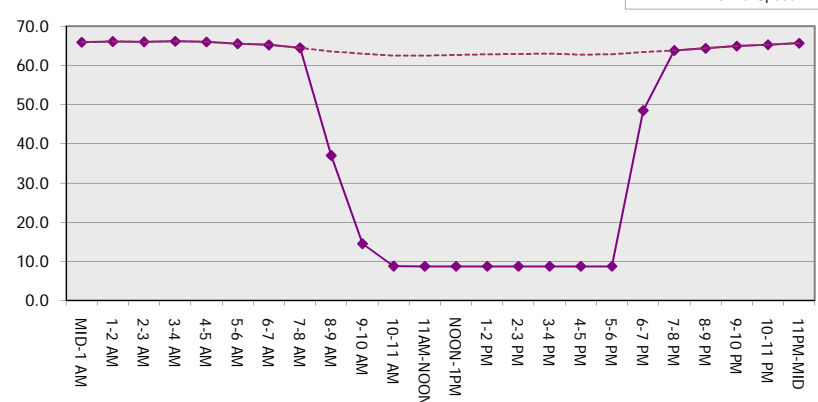
Main Route Average Delay Per Vehicle (Minutes)



Main Route - Average Queue Length (Vehicles)



Main Route - Average Speed (MPH)



USH 41: IH 43 TO STH 29 (BROWN COUNTY) OFF-PEAK DAY CLOSURE NO DIVERSION ROUTE (MAX QUEUE METHOD)	OCTOBER
	Analyzed for 2009 Construction Season

SUMMARY OF TRAFFIC MODEL OUTPUT

SATURDAY NORTHBOUND DIRECTION

TIME OF DAY	FLOWS AND CAPACITY IN VEH/HR						AVERAGE SPEEDS IN MPH			
	MAIN ROUTE		SITE CAPA CITY	FLOW		AV.DEL PER VEH (MINS)	AVERAGE QUEUE (VEH)	MAIN ROUTE		SITE
	DEMAND FLOW	PCT HEAVY		MAIN ROUTE	'DIVER TED'			WITHOUT WORK ZONE	WITH WORK ZONE	
MID-1 AM	351	0.0	OFF	351	0	0.00	0	65.7	65.7	65.7
1-2 AM	204	0.0	OFF	204	0	0.00	0	66.0	66.0	66.0
2-3 AM	182	0.0	OFF	182	0	0.00	0	66.1	66.1	66.1
3-4 AM	142	0.0	OFF	142	0	0.00	0	66.1	66.1	66.1
4-5 AM	214	0.0	OFF	214	0	0.00	0	66.0	66.0	66.0
5-6 AM	362	0.0	OFF	362	0	0.00	0	65.7	65.7	65.7
6-7 AM	556	0.0	OFF	556	0	0.00	0	65.3	65.3	65.3
7-8 AM	824	0.0	OFF	824	0	0.00	0	64.8	64.8	64.8
8-9 AM	1225	0.0	1499	1225	0	0.66	0	64.1	47.3	37.9
9-10 AM	1527	0.0	1499	1527	0	1.40	13	63.5	36.5	31.4
10-11 AM	1866	0.0	1500	1866	0	8.18	218	62.9	13.0	30.8
11AM-NOON	2107	0.0	1499	1502	605	16.90+	429	62.5	8.7	30.8
NOON-1PM	2122	0.0	1500	1501	621	16.90+	429	62.4	8.7	30.8
1-2 PM	2109	0.0	1500	1501	608	16.90+	429	62.5	8.7	30.8
2-3 PM	2100	0.0	1500	1501	599	16.89+	429	62.5	8.7	30.8
3-4 PM	2024	0.0	1500	1501	524	16.89+	429	62.6	8.7	30.8
4-5 PM	1962	0.0	1500	1501	461	16.89+	429	62.7	8.7	30.8
5-6 PM	1803	0.0	1500	1500	303	16.89+	428	63.0	8.7	30.8
6-7 PM	1570	0.0	OFF	1570	0	0.59	37	63.5	48.4	48.4
7-8 PM	1329	0.0	OFF	1329	0	0.00	0	63.9	63.9	63.9
8-9 PM	1170	0.0	OFF	1170	0	0.00	0	64.2	64.2	64.2
9-10 PM	967	0.0	OFF	967	0	0.00	0	64.6	64.6	64.6
10-11 PM	693	0.0	OFF	693	0	0.00	0	65.1	65.1	65.1
11PM-MID	547	0.0	OFF	547	0	0.00	0	65.4	65.4	65.4

"OFF" INDICATES NO ROAD WORK (ALL LANES OPEN TO TRAFFIC)

+ INDICATES QUEUEING EXCEEDS USER-SPECIFIED MAXIMUM LIMIT

----- SITE BREAKDOWN DELAYS -----	
BREAKDOWN DURATION (MINS)	0
RANGE OF QUEUE DELAY - MIN (VEH-H) MAX	0.0
AV BREAKDOWNS PER DAY	0.00
AV QUEUE DELAY/DAY (VEH-H)	0.0
AV TOTAL DELAY/DAY (VEH-H)	0.0

----- SITE ACCIDENT DELAYS -----	
BREAKDOWN DURATION (MINS)	0
RANGE OF QUEUE DELAY - MIN (VEH-H) MAX	0
AV BREAKDOWNS PER DAY	0
AV QUEUE DELAY/DAY (VEH-H)	0
AV TOTAL DELAY/DAY (VEH-H)	0

AVERAGE ACCIDENT NUMBERS (PIA/DAY)	
MAIN ROUTE WITHOUT WORKS	0.0089
MAIN ROUTE WITH WORKS	0.0067
'DIVERSION'	0.0027

PIA: Personal Injury Accidents

ECONOMIC IMPACT ON ROAD USERS	
ROAD USER COSTS PER DAY	\$71,200
CONGESTED HOURS PER DAY*	7

*Delays Exceeding User-Specified Maximum

**USH 41: IH 43 TO STH 29 (BROWN COUNTY)
OFF-PEAK DAY CLOSURE
NO DIVERSION ROUTE (MAX QUEUE METHOD)**

OCTOBER

Analyzed for 2009
Construction Season

GRAPHICAL REPRESENTATION OF TRAFFIC MODEL INPUT AND OUTPUT
SATURDAY NORTHBOUND DIRECTION

